

GUARDINO GALLERY



Pictured: Jamee Linton "River Bend" painting

Next show:

Jamee Linton & Sara Plaia
February 22-March 27

- Changing Monthly Exhibitions
- Contemporary Art & Craft in Gift Shop

OPEN six days a week

Convenient Northeast location:

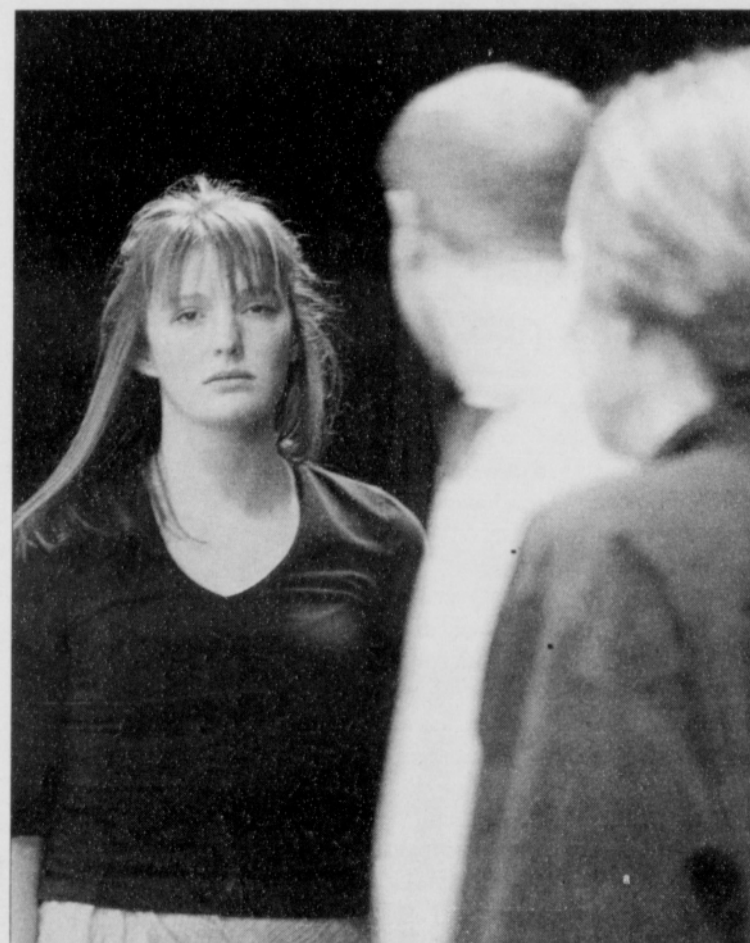
2939 NE Alberta • Portland, OR 97211
503 281-9048 • www.guardinogallery.com

Theater Brings Audience Up Close

A Portland Community College theater production will use puppetry, masks and a stage that brings the audience up close and personal to the actors.

On a theater-in-the round stage, the audience will get a unique and creative look at the story of "The Love of the Nightingale," by Timberlake Wertenbaker. To view the production, the audience will get to sit on stage around the actors.

A contemporary retelling of the ancient Greek myth of Philomele and her sister Procne, the play will be held at the Performing Arts Center at the PCC Sylvania Campus, 12000 S.W. 49th Ave. Premiere night is Thursday, March 8 at 7:30 p.m. and continues March 9-10, and March 16-17, also at 7:30 p.m. There will be one matinee at 2 p.m. on Sunday, March 18. The Friday, March 16 performance will be sign language interpreted. Prices are \$10 for adults and \$8 for students and seniors.



Veronica Everett stars in the Portland Community College theater production of "The Love of the Nightingale."

Spice Restaurant & Lounge

The ingredient for every occasion

Spice Hour Menu (Daily, 3:30 pm - 6:30 pm)

BBQ Wings tossed in BBQ sauce Served with celery.....	\$2.95
Calamari with tartar sauce and cocktail sauce.....	\$2.95
Chips & Salsa large plate of chips, served with a medium salsa.....	\$1.99
Coconut Prawns freshly coated coconut, with sweet & sour sauce....	\$3.95
Nachos with guac., salsa, tomato, lives, scallions, cheese & jalapenos....	\$2.95
Onion Rings with ranch dressing.....	\$1.95
Potatoes Skins with tomato, bacon, scallion, cheese & sour cream....	\$2.95
Quesadilla served with lettuce, tomato & onions.....	\$2.95
Shrimp Cocktail tiger prawns served with cocktail sauce.....	\$3.95
Spice Wings tossed in a spice sauce and served with celery.....	\$2.95
Clam Chowder homemade clam chowder served with crackers.....	\$2.50
Minestrone homemade minestrone served with crackers.....	\$2.50
House Salad with mix greens, tomato, onion, cucumber and carrots....	\$2.50
Caesar Salad with romaine, croutons & parmesan cheese.....	\$2.50
Cheese fries golden brown fries topped with mix cheese and baked.....	\$1.99
Chicken Strips with fries.....	\$2.95
Pepper Jack Cheeseburger ¼ patty w. paper jack cheese & fries....	\$4.50
Burger ¼ Lettuce tomato onion and fries.....	\$4.00
Spice Cheese Mac penny pasta tossed w. cajon spice & mix cheese....	\$2.50

Well drinks \$3.00 • Domestic beer pints \$3.00 • Micros beers pints \$3.00

Spice Restaurant & Lounge 2808 NE. Martin Luther King Jr., Portland, Oregon 97212
(503) 493-8127 • Fax (503) 528-8298



Daily Special

Start at 7:00 pm until 12am

Monday \$2.00 Marquette

Tuesday \$2.00 Tequila

Wed. \$4.00 wine

Thursday \$2.00 well drinks

Friday \$5.00 well Martini

DJ and dancing with no cover charge

Saturday \$2.00 domestic bottle beer

DJ and dancing with no cover charge

Sunday \$4.00 pitcher of papas and \$5.00 pitcher of Beer town micro & \$3.00 wine. ALL DAY Free pool and karaoke

Live Music Every Night

• Hannah Bea's, 3969 N.E. MLK, presents jazz during its 'Sunday Brunch Serenade' from 11 a.m.-1 p.m.

• Live jazz performances Sunday evenings from 8:30 p.m.-11:30 p.m., at Clyde's Prime Rib, 5474 NE Sandy, and at the Blue Monk, 3341 S.E. Belmont.

• Participate in a mixed-media open mic night each Monday at the Back-to-Back Café, 614 E. Burnside, and at the Clackamas Community College's Open Mic Jazz Jams, from 7 p.m. to 10 p.m.

• Live blues performances Tuesday at Produce Row Café, 204 SE Oak, from 9 p.m. to Midnight, the Steinhaus, 2366 SE 82nd Ave., Mississippi Studios, 3939 N. Mississippi Ave., from 8 p.m. to 11 p.m. and at Jimmy Mak's, 221 NW 10th, at 8 p.m. Live blues and jazz performances are available.

• Wednesdays, the Candlelight Room, 2032 SW 5th, and Duff's Garage, 635 SE 7th, and the Blue Diamond, 2016 NE Sandy Blvd., offer up blues performances. Catch live jazz performances at the Blue Monk, the Portland Art Museum, Jimmy Mak's, and Jax, 826 SW 2nd, from 7:30 p.m. to 11 p.m.

• On Thursdays the Women in Blues Review, at Tillicum's, 8585 SW Beaverton in Hillsdale.

• Fridays and Saturdays offer many venue choices around the metro area: Halibuts (2525 NE Alberta St.), Mississippi Studios, LV's, 3530 N. Vancouver Ave., XV, 15 SW 2nd, Out of the Blues, 2050 NW Vaughn, Manila Express, 12370 SE Main St. in Tigard, One Stop Records, 615 NE Killingsworth St., and the U-licious Smokehouse, 4057 N. Interstate Ave.