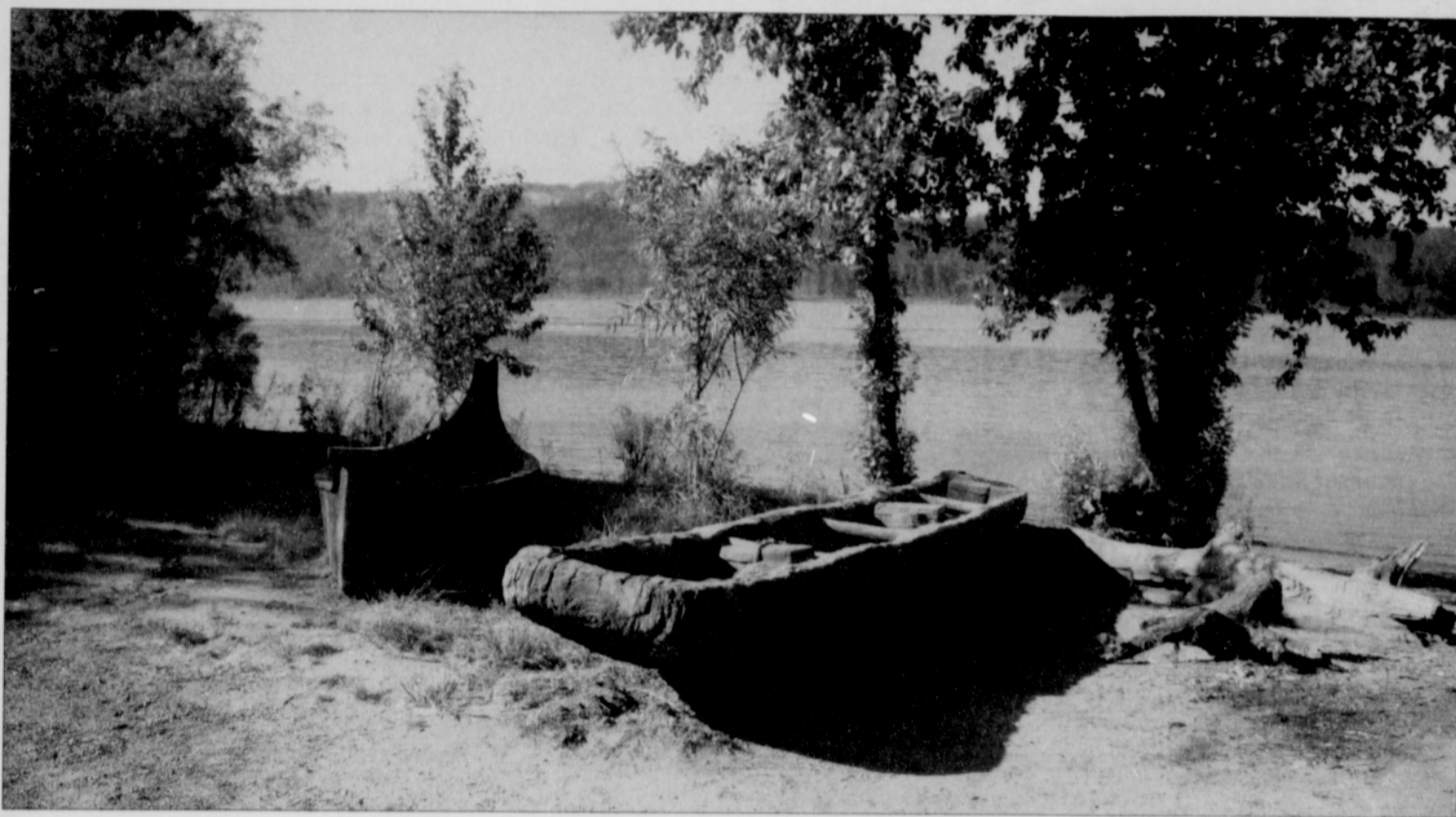


FOCUS



A permanent replica of a pine log canoe that Lewis and Clark used on their expedition 200 years ago (left) and a cedar canoe used by the native Chinookan people rest along the Columbia River northwest of Portland at Cottonwood Beach in Washougal.

Native Canoe Earns Artist Award

Concrete canoes that replicate the pine log canoes Lewis and Clark used on their expedition 200 years ago, and the cedar canoes of the native Chinook people that the ex-

plorers encountered near Portland, have won a special award for artistic merit.

The canoes are permanent structures anchored along the Columbia River at Captian Wil-

liam Clark Park at Cottonwood Beach in Washougal.

The Washington Aggregates and Concrete Association credits Chinookan artist Tony Jonson and the Turn-

stone Construction craftsmen with creating the replicas with a high level of artistic detail, bringing out the seams, cracks and depressions of the rough dugout canoes.

On NE ALBERTA ST Street

Stylized to Realistic

Figurative art ranging by Marcio Melo, ranging from the stylized to realistic, will exhibit for the second time at the Onda Arte Latina/Cross Currents Gallery, 2215 N.E. Alberta St.

An opening and artist's reception will be held on Last Thursday, Aug. 31 from 6 p.m. to 9 p.m. A special conversation with the artist will take place on Saturday, Sept. 2 at 3 p.m. The exhibit runs through the month of September.

Melo is a Brazilian painter who lives in Canada. Those who saw his paintings last year were captivated by his bold and colorful paintings. He typically works from imagination and his themes run from Brazilian Candomblé Saints to Canadian wildlife. The paintings often include people or animals, many with fantastic or spiritual imagery as elements.



Bold and colorful figurative art is part of the Marcio Melo collection to be featured during September at Onda Arte Latina/ Cross Currents Gallery, 2215 N.E. Alberta St.

CD Blends Ray Charles, Count Basie



Ray Charles



Count Basie

Late legends united

(AP) -- Ray Charles never performed with the late Count Basie when the two music legends were alive, but now they are being united in death.

Concord Records and Starbucks Hear Music will release a disc this fall that combines vocals recorded by Charles during a concert in the mid-1970s with new music made by today's Count Basie Orchestra.

Among the dozen cuts on "Ray Sings, Basie Swings" are "Busted," "I Can't Stop Loving You," "The

Long and Winding Road" and "Georgia on My Mind."

The last project Charles recorded before his death on June 10, 2004 was the duets album "Genius Loves Company," which earned eight Grammy Awards. It sold more than six million copies worldwide, making it the biggest-seller of his career.

While looking through a record company vault in late 2005, one of the "Genius Loves Company" producers came up with tapes marked "Ray/Basie." The producer, John Burk, thought he'd found some-

thing to rewrite history. While the acts had shared concert bills, it was believed they had never performed together.

The tapes turned out to contain a copy of Charles singing accompanied by his own orchestra, although the music was recorded so poorly it could barely be heard. Burk had the idea of pairing the vocal recordings with new instrumental backing.

Gregg Field, a drummer who toured and recorded with both Charles' and Basie's bands before Basie died in 1984, was brought in to build the new disc with computer editing. Field had to match Charles' singing to the new band's performance, often stretching or compacting the space between words in order to fit the tempo.

Since the musical marriage of Natalie Cole with her late father Nat King Cole on "Unforgettable," technology has advanced to the point of making almost anything possible. Mashups, which marry artists and songs in odd combinations, have become an underground art form.

Monsters Wanted 'Scream at the Beach' recruits

Looking for something different that's both fun and educational? Volunteers are needed to help prepare for 'Scream at the Beach,' October's largest, scariest and top-rated haunted house at the Jantzen Beach SuperCenter in north Portland.

Likened to a Disney experience, this family friendly but very scary entertainment complex features five full-featured haunted attractions, live shows and hordes of roaming monster characters. A few good monsters are needed to complete the elaborate set up in time for the 2006 season.

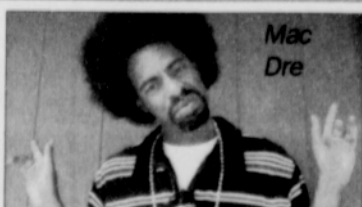
Tasks include creature creation, assembling sets, making props, sewing costumes, installing special effects and more. Technical Theater experience is a plus, but anyone with a love for Halloween and an ounce of talent will find this project worthwhile.

For more information, visit screamatthebeach.com or email volunteers@screamatthebeach.com.

Mac Dre Tribute at Roseland

A Mac Dre tribute celebration takes place Friday Aug. 25 at the Roseland Theater featuring Keak Da Sneak, Rydah J Klyde, Harm and Meezilini.

Andre Hicks (July 5, 1970 - Nov. 1, 2004), better known by his stage name,



"Mac Dre," was a pillar of San Francisco Bay Area hip-hop for over a decade. He has worked with artists like E-40, Yukmouth, Snoop Dogg, and Keak da Sneak.

Visit 2realrecords.net for information.

Kids 10 to 12 Years!!!!!!! AEROSPACE

After School Learning Practical Math, Science and Computer Technology

Locations: PCC Skill Center (Cascade Campus) Hillsboro Airport • Pearson Air Museum Accepting Applications

CENTERS FOR AIRWAY SCIENCE 503.292.4542

Download an application @ www.airwayscience.org

APPL. MATHS, COMPUTER FLIGHT SIMULATION, MODEL BUILDING AND FLYING (PISTON CONTROLLED)

ENHANCING THE OWNERSHIP EXPERIENCE.

AFFORDABLE NEW HOMES in PARKROSE 10 year TAX abatement.

Garage, yard, porch & patio, NO common walls

Beautiful new homes loaded with great features! Convenient NE location to MAX, Bus, I-205, & I-84! Value at \$218,750-\$227,750

Selling in your neighborhood

John L. Scott REAL ESTATE

Karmen Baricevic CSP 503-380-3315 karmen@johnlscott.com www.johnlscott.com/karmen

RSL Luxury Skin Care

We currently offer: Microdermabrasion • Peels Facials • Bridal • Facial Waxing Beauty Consultations • Cosmetics Perfectly Shaped Eye Brows Personal Care Products

Take yourself to the next level in beauty Call today! 971-227-9044 833 SE Main Street, Suite 108, Portland, OR 97214

Bargain Wireless

"For All Your Wireless Needs"

#1 Wireless Store! No Credit Checks!

We buy & sell used phones. We do Bill Pay (Cell Phones, Utility Bills)

Service offered: Sprint, Nextel, T-mobile, Qwest, Dish Network, Comcast, prepaid.

3511 N.E. MLK Blvd. Portland, OR 97212 (503) 282-6061

Mobile Qwest Sprint Dish

www.bargainwireless.net

Oregon Shakespeare Festival

ASHLAND

ORGANIZED BUS TOURS Aug. 31 - Sept. 2

Intimate Apparel by Lynn Nottage

The Two Gentlemen of Verona by William Shakespeare

The Importance of Being Earnest by Oscar Wilde (\$345/person double occupancy)

Sept. 2 - 3

The Merry Wives of Windsor by William Shakespeare

The Winter's Tale by William Shakespeare (\$275/person double occupancy)

Sept. 29 - Oct. 1

Cyrano de Bergerac by Edmond Rostand

The Importance of Being Earnest by Oscar Wilde

Intimate Apparel by Lynn Nottage (\$345/person double occupancy)

Relax and Enjoy! Round-trip coach trip; dinner with OSF actors; indoor and outdoor performances; lodging in downtown hotels; shopping and much more!

BOOK NOW! (541) 482-2111, ext. 240 amyr@osfashland.org

The Tragic History of Doctor Faustus (2005). Ensemble Intimate Apparel (2006). Gwendolyn Mulamba, Tiffany Adams. Photos: David Cooper and T. Charles Erickson.