

The March On Washington

In August 1963, Dr. Rev. Martin Luther King Jr. led a quarter of a million people, including Rose Parks, in the March on Washington. It was there that King gave his famous "I Have A Dream" speech.



King Blood Drives Held Locally

continued ▲ from B13

cans donating blood and signing up in the National Marrow Donor Program.

Also, the Red Cross will hold a mobile blood and bone marrow drive Monday, Jan. 16 at the Jefferson High School cafeteria from 11 a.m. to 4 p.m. to kick off the celebration week.

One Jefferson High School student is in need of a bone-marrow transplant. Jarraye Hicks, a 15-year-old freshman, was diagnosed last June with acute myelogenous leukemia, a cancer of blood-forming tissues of the bone marrow. Hicks also requires periodic blood transfusions—blood provided by the Red Cross—to help him live.

African Americans make up

7 percent of Portland's population, yet less than 2 percent donate to the community blood supply.

Low blood donation rates by African Americans have resulted in shortages of blood

While blood compatibility is not based on race, rare blood types often are.

supply for illnesses where multiple transfusions result in difficult cross-matching, such as sickle-cell disease, a blood disorder carried by 1 in 12 African Americans.

While blood compatibility is not based on race, rare blood types often are. Some rare blood types, such as U-negative and Duffy-negative, are unique to the African American community.

To be eligible to give blood you must be at least 16 years old, weigh at least 110 pounds and be in good general health. Marrow donors should be between the ages of 18 and 60.

To schedule a blood donation during the event, call 503-284-4040. For more information about marrow donation, call Delores Rue-Jones at 503-528-5475.

Donors during the week will have the opportunity to enter a raffle for a \$100 Safeway gift card and two haircuts from Geneva's.



Be known as one of 'America's Finest.' Become an FBI Special Agent.

FBI at work in the community

Today's FBI demands that we become more diverse and we are working harder than ever to be inclusive—for all people, regardless of color, race, religion, national origin, political affiliation, marital status, disability, age, sex, or sexual orientation. To this end, we are redoubling our diversity efforts within the FBI and externally with such organizations as Boys and Girls Clubs of America, Race Against Drugs, the League of United Latin American Citizens, and the NAACP. Additionally, we're very proud to hold our bi-annual, 7-week FBI Citizen's Academy. During weekly 3-hour sessions, we bring together leaders from a multitude of ethnic and religious groups to gain an insider's view of the FBI.

Special Agents

We have opportunities for Special Agents from a broad range of educational disciplines and professions, however, the FBI has special needs for candidates with critical skills among the following areas: Computer Science or IT, Engineering, Foreign Counterintelligence, Information Systems, Security, Military Intelligence, Physical Sciences, and Accounting/Financial Management.

Foreign Language skills are an especially critical need for the FBI, particularly if you hold a Bachelor's degree in any subject area and have a native fluency in any of the following: Arabic, Chinese - all dialects, Farsi/Persian, Hebrew, Hindi, Japanese, Korean, Pashto, Punjabi, Russian, Spanish, Urdu, and Vietnamese.

To qualify for the FBI Special Agent position, you must possess a four-year college degree plus three years of professional work experience, be available for assignment anywhere in the FBI's jurisdiction, be between the ages of 23 and 36, and be in excellent physical condition with the ability to pass a rigorous physical fitness test.

To learn more about these and other opportunities, please visit our Web site for complete details. Positions added daily.

www.fbijobs.com

You must be a U.S. citizen and consent to a complete background investigation, drug test, and polygraph as a prerequisite for employment. Only those candidates determined to be best qualified will be contacted to proceed in the selection process. TDD: (202) 324-2967.

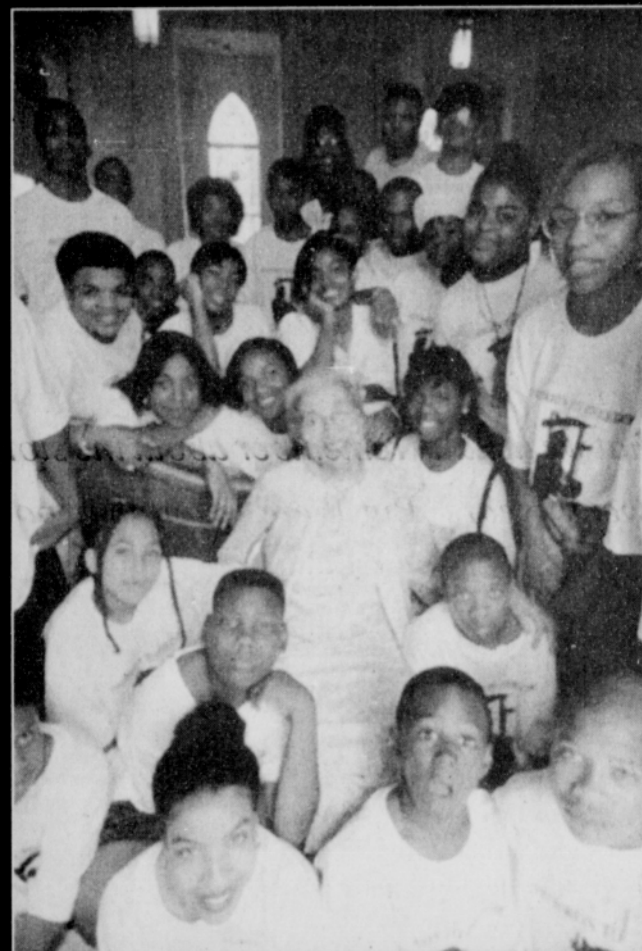
The FBI is an equal opportunity employer.



FBI...Special People. Special Agents.

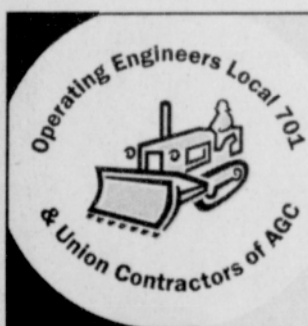
The Parks Institute:

"We work with young people, from the ages of 11 to 17. Our main program is the Pathways to Freedom. We always encourage them to have a spiritual awareness, because I feel that with the spirit within and our belief in ourselves and our faith in God that we will overcome many obstacles that we could not with negative attitudes. I want to always be concerned with being positive, and them being positive and believing in themselves, and believing that they should be good citizens and an asset to our country and for the world. And I believe in peace too, and not violence." — Rosa Parks



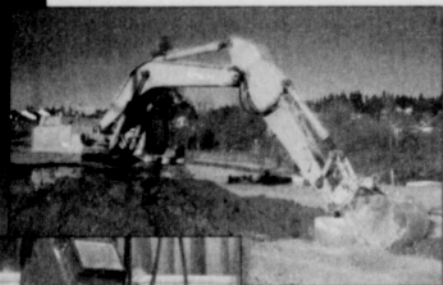
The Rosa and Raymond Parks Institute for Self Development was co-founded in February 1987 by Mrs. Rosa Parks and Ms. Elaine Eason Steele, in honor of Raymond Parks (1903 - 1977). It is the living legacy of two individuals who committed their lives to civil and human rights.

General Information: (313) 965-0606
General E-Mail: general@rosaparks.org



HEAVY EQUIPMENT OPERATORS WANTED

Develop skills and build a career in construction



Heavy Equipment Operator
and
Heavy Duty Repairer



EARN while you LEARN!

To be successful, you will need

- Math skills
- Communication skills
- A strong work ethic
- A willingness to learn
- Problem-solving skills
- Writing skills
- A good attitude

A career as a Heavy Equipment Operator offers a competitive salary, excellent benefits and continued training. Visit our website at www.oetraining.org. Click on *Apprenticeship, How to Apply and Opening Letter.*

Operating Engineers Training Center
503-723-6903 or 541-741-7292
www.oetraining.org
5001 Franklin Blvd, Eugene, OR 97403



Help build the communities you live in!

Same great service, even greater opportunity.



For nearly 75 years, Portland Teachers Credit Union has been a staple in the local financial and educational community. Our proud standing as one of the state's largest locally owned financial institutions is further testament to the care we take of those who call the area home. And today, that very commitment to employees and members alike has only grown. We're excited to announce our new name as OnPoint Community Credit Union - and we're even more excited to share our brand of member and financial service across a ten-county region in Oregon. Best of all, these exciting changes also mean greater opportunities for you. Join us today.

For current career opportunities and to apply, please visit www.onpointcareers.com. Equal Opportunity Employer.



www.onpointcareers.com

OnPoint
COMMUNITY CREDIT UNION

Real. Smart. Value.