

# In the Neighborhood

Do you agree with Oregon lawmakers who want to make over-the-counter drugs like Sudafed into a prescription drug to prevent meth abuse?



It's silly and absurd. People that actually have proven allergies shouldn't have to constantly go to the doctor for drugs like Sudafed.  
--Sarah Hecker



People that are known to abuse meth should be entered into a book so pharmacists won't sell to them.  
--Joseph Lonjose

We have seen the affects (meth) has on people, so I think this would be a good idea.  
--Abdula Addias



For a person who suffers from allergies, it's already a big hassle to get my medicine. I don't have a doctor, so once they switch this medication to prescription only, I'm going to be in trouble.  
--Frederica Thurmond



I think it's going too far. If they are keeping the stuff behind the counter already, it's not that easy to get it. When Sudafed becomes prescription only, people will still find a way to make meth.  
--Brian Osborn



## Outdoor Events to Promote Jefferson Area

BY NICOLE HOOPER  
THE PORTLAND OBSERVER

Lori Goodwin knows north and northeast Portland. She is not only a long time resident, but has worked three years as a Portland Police Northeast Precinct gang enforcement detective.

Rev. Renee Ward, a local African-American minister, believes the presence of a public servant like Goodwin lets residents know that not all cops are out to hurt citizens.

Together they plan on kicking off "Portland Convergence," a two-week community celebration on the grounds of Jefferson High School that aims to influence people in a positive way and help support the school. The events are scheduled to open on Friday, Aug. 5.

"I have a heart for this area and we can turn this city around if we unite and network," said Goodwin. "This area gets such negative attention. The crime rates are always headlines. I just want to see some positive impact. There are a lot of beautiful things and people in this area."

Even though there will be a religious connotation to the convergence, Goodwin wants the events to remain non-denominational.

Local child evangelist, Steve Nine who recently returned from religious work in Ecuador is also helping with the convergence.

"I am here to help and serve anyway I can

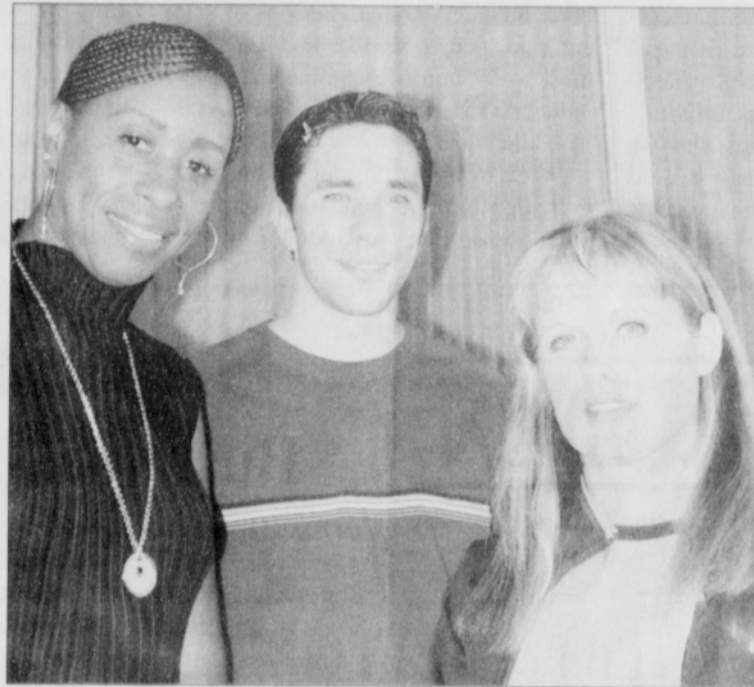


PHOTO BY NICOLE HOOPER/THE PORTLAND OBSERVER

Rev. Renee Ward (from left), Steve Nine and Lori Goodwin, an anti-gang enforcement officer, plan the "community convergence" celebration over two weekends in August on the grounds of Jefferson High School.

to reach kids and also the local Hispanic churches," Nine said.

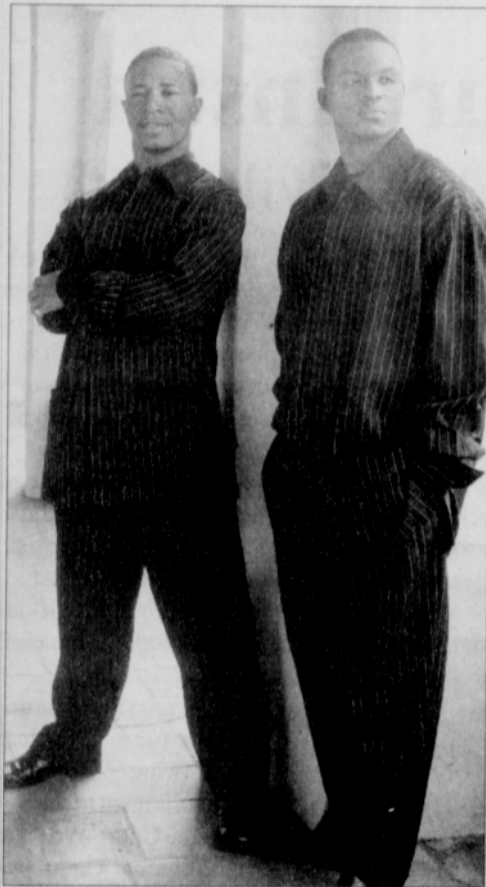
Destiny speaker from Dallas, Texas, Dr. Undrai Fizer, will speak on both Aug. 5 and 6 at 7 p.m. to bring positive and motivational words to the community.

The following weekend, on Aug. 12 and 13 at 7 p.m., Catch 2, a Los Angeles Christian Rap Group will perform. Catch 2 members are Eric Crowder and Jahmy Graham, born-again Christians and former gang members. Like Dr. Fizer, they are on a mission to

save people from destructive lifestyles.

Other entertainment is booked solid with local performers like choirs, gospel rappers, dance and mime. Each of the four days the convergence will start at 4 p.m. with various children's activities followed by performances throughout the evening.

Volunteers, financial assistance, food and non-profit and ministry vendors are still needed. For more information, visit [www.portlandconvergence.com](http://www.portlandconvergence.com).



Catch 2, a Los Angeles Christian rap group will perform Aug. 12 and 13 at 7 p.m. at Jefferson High School during a community celebration to build positive support for the school and its surrounding neighborhoods.

## Drug Card Could Save Money

Low-income Oregonians should apply this summer if they want to qualify for extra financial assistance to reduce or eliminate costs associated with the new federal prescription drug program that starts next year, according to the Oregon Department of Health and Human Services.

Oregonians enrolled in or covered by Medicare and Medicaid, SSI, or a Medicare Savings Program automatically qualify, while those with incomes under \$14,355 a year and resources under \$10,000 are most likely to qualify, officials said.

Those who are married and living with spouses may qualify as well if they have incomes under \$19,245 a year and savings under \$20,000. The limits are \$1,500 higher if those assets are dedicated to burial expenses.

The Social Security Administration is sending applications to more than 260,000 Oregonians who may qualify for the prescription help.

Those who do qualify may also be eligible for other forms of financial help, such as a Medicare Savings Program, said James Toews, DHS assistant director for Seniors and People with Disabilities.

The new Medicare drug coverage, part of the Medicare Modernization Act signed by President Bush in 2003, begins on Jan. 1. To learn more about the program, to receive an application for extra help, or to get assistance filling out the application, contact Social Security. The toll-free number is (1-800) 772-1213 or TTY (1-800) 325-0778 between 7 a.m. and 7 p.m. Monday through Friday.

## New Seasons Expands Again

Locally owned grocery chain New Seasons Market announced Monday that it will open a store in the Mountain Park Shopping Center in Lake Oswego in 2006.

Founded by three Portland families, New Seasons Market strives to combine the service and atmosphere of an old-fashioned neighborhood market with a selection of food and other products for today's lifestyle.

New Seasons Market stores are located in the neighborhoods of Raleigh Hills, Sellwood,

Concordia, Orenco Station and the Seven Corners neighborhood of Southeast Portland.

The company currently is in the process of building a sixth store in the Arbor Lodge neighborhood of north Portland at North Interstate Avenue and North Portland Boulevard, and another store at Cedar Hills Crossing in Beaverton.

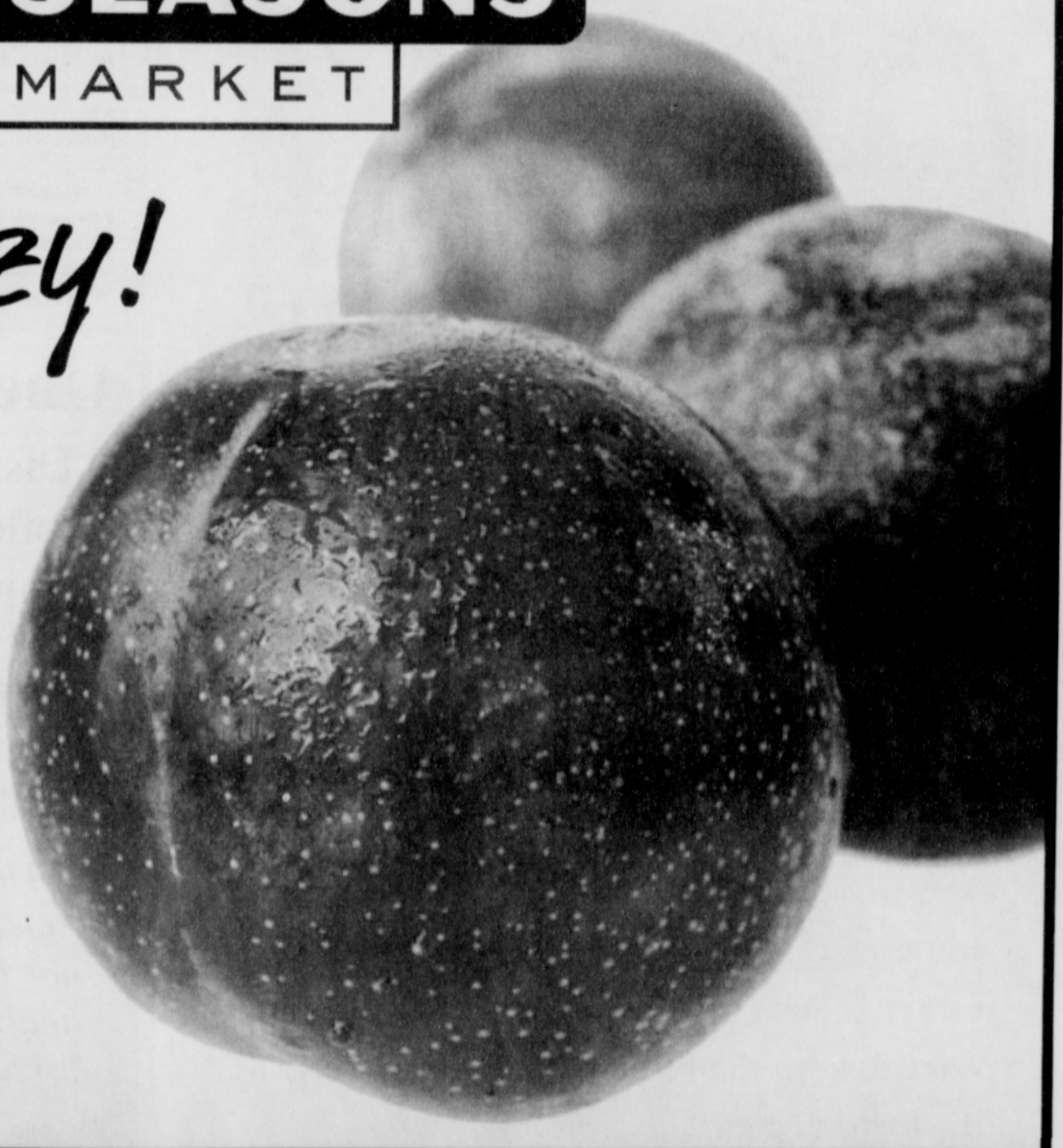
# NEW SEASONS MARKET

## Go plum crazy!

Plum Tasting  
Saturday & Sunday  
11:00am-5:00pm

Remember when plums were simple? They were either red, or black, or yellow. Well, those days are over. This weekend we're going to do our best to drive you plum crazy! There's a whole other world of plums out there. Taste delicious varieties like Black Friar, Fortune, Wickson, Catalina Laroda, Mariposa, Grand Rosa, Shiro, and more.

And if you're not a plum lover, we're going to try and convince you to try a Plucot. We can't tell you how many times we've heard "I don't like plums" but after a taste, have turned those same folks into Plucot lovers. This fruit, which is a cross between a plum and an apricot, takes the best of both and makes something even better. We have the most complete Plucot selection north of San Francisco. Compare the Dapple Dandy to a Flavor Queen, Flavor King, or to some of the other special varieties we're bringing in. We'll have them all out for you to taste.



The friendliest store in town.

EASY & FUN TO SHOP • LOCALLY OWNED & OPERATED

**CONCORDIA**  
NE 33rd & Killingsworth  
Portland OR 97211  
503.288.3838

**ORENCO STATION**  
Cornell & NE 61st Ave.  
Hillsboro OR 97124  
503.648.6968

**RALEIGH HILLS**  
7300 SW Beaverton-Hillsdale  
Portland OR 97225  
503.292.6838

**SELLWOOD**  
1214 SE Tacoma  
Portland OR 97202  
503.230.4949

**SEVEN CORNERS**  
1954 SE Division Street  
Portland OR 97202  
503.445.2888