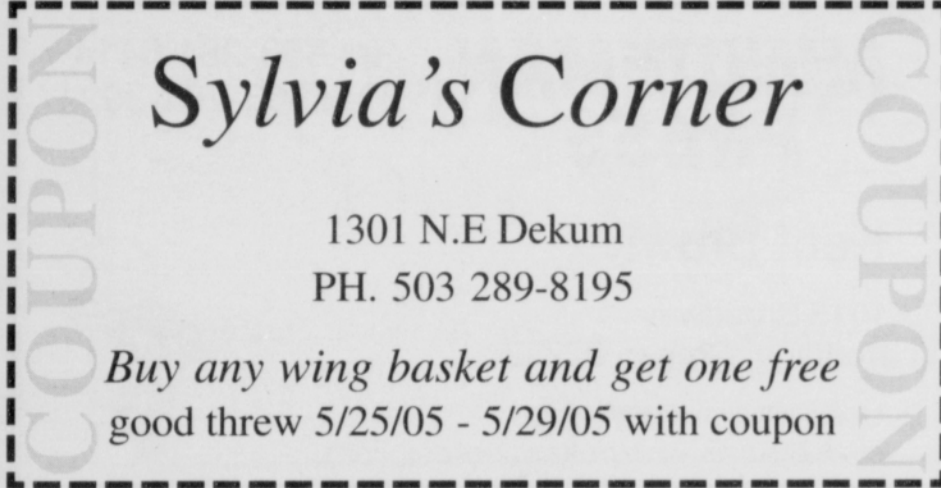


Sylvia's Corner

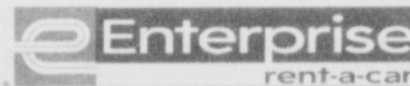
1301 N.E Dekum
PH. 503 289-8195

Buy any wing basket and get one free
good throu 5/25/05 - 5/29/05 with coupon



Matthew Aalto
Branch Rental Manager

503-230-1212
503-230-1318 Fax



611 E. Burnside
Portland, OR 97214
www.enterprise.com

Steve Harris
Assistant Manager



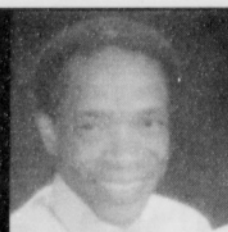
Since 1924

2500 NE MLK Jr.
Portland, OR 97212

(503) 282-7787
fax (503) 282-3182

email: www.bardy@teleport.com

www.JohnLScott.com



Harold Strong
Broker
(503) 780-4094

Fax: (503) 671-0121
Office: (503) 671-0221
E-Mail: harolds@johnlscott.com
Address: Washington Square Office
9020 SW Washington Sq. Dr. #100
Portland, OR 97223



John L. Scott
REAL ESTATE

John L. Scott PTL • Washington Square Office
This office is independently owned and operated



1615 N.E. Killingsworth
Portland, Oregon 97211

503 284-2435
Fax 503 331-1442

onescopmusic.citysearch.com

"We give you the service you Deserve"



204N Killingsworth (Vancouver St.) Portland,
OR 97211

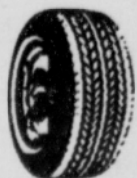
bandbtshirts@earthlink.net

photo gifts while you wait!

**CUSTOM PRINTED
GARMENTS
MOUSE PADS
PUZZLES
EMBROIDERY
SILK SCREEN
NUMBERS
QUICK GIFTS**

503-284-1810 phone

503-284-1910 fax



DOUBLE J TIRE CENTER

NEW • USED • NEW CAPS
Taxes, Mounting & Balancing Included
FULLY GUARANTEED

"NOW WITH 2 LOCATIONS"

6841 N.E. M.L.K. JR. BLVD.
PORTLAND, OREGON 97211
(503) 283-9437

4510 S.E. 52ND & HOLGATE
PORTLAND, OR 97206
(503) 771-1834

HOURS - MON. THRU FRI. 9 TO 6 • SAT. 9 TO 4

WESTERN MEATS

"YOUR QUALITY FULL SERVICE
MEAT MARKET"

4707 N. LOMBARD
PORTLAND, OREGON 97203
(503) 283-5174

RON

BILL

