

**Dear Deanna!**

I'm in a situation where I'm living with a man that drinks booze and he's verbally abusive. I live with him in his home and everything is in his name including my car. I'm afraid to leave because I'll have to run away with my small kids but if I stay, he might start beating on me. -- Jasmine; Dayton, Ohio



**Real People, Real Advice**  
An advice column known for its fearless approach to reality-based subjects!

**Dear Jasmine:**

You have issues because not once have you mentioned being worried about the safety of your kids. Regardless of whose car, bus, or train you take, get your butt out of that situation while you can. Don't wait for him to sling one of your babies into a wall while he's drunk. Go to a shelter or stay with your family and friends while you build yourself up and get on your way to being independent.

**Dear Deanna!**

When a kid disrespects their mother, I think a backhand slap is enough to put that child in check. I've done this to my son and he has a cut lip to show for it. My best friend has threatened to turn me in to authorities for child abuse and claims she's going to bust my mouth if I hit

my son again. Am I wrong for this? --Madge; Dover Air Force Base, Del.

**Dear Madge:**

My bet goes to your friend who needs to give you a fat lip. If you have to hit your son in the mouth on a regular basis for being disrespectful, something's wrong with your parenting skills. Take a look at what's causing the breakdown, be an adult and come up with a solution. You may need to seek counseling for both of you. As for that backhand swing, go chop some wood or swat a few

flies and keep your hands to yourself.

**Dear Deanna!**

A close friend of mine dates a girl who's using him. He works hard, gives her his paycheck and worships the ground she walks on because she's cute. She talks down to him, and has other men in the house while he's working. Now it's at the point where none of the guys visit because they don't want to deal with his girlfriend. --Stan; Morganton, N.C.

**Dear Stan:**

Take your spoon out of your friend's Kool-Aid and mind your business. Has he raised his hand for help or come to you for advice? If he wants to work like a dog, look like a fool and feed other men off his paycheck, let him. They must be happy because she hasn't left and he hasn't kicked her out. You and your friends have the right to be concerned but he's a grown man and knows exactly what time it is.

Ask Deanna is written by Deanna M. Write Ask Deanna! Email: askdeanna1@yahoo.com or 264 S. LaCienega Blvd. Suite 1283 Beverly Hills, CA 90211. Website: www.askdeanna.com

## Gang Shooting Wounds Girl

A 17-year-old girl was wounded in a northeast Portland shooting on Monday night that police labeled as "gang-related." Officers responded to a report

of gunshots at the 5100 block of Northeast 14th Place at about 9:35 p.m. and found the teen victim suffering from a bullet wound to head.

Police termed her injuries non-life threatening.

No information on suspects or a motive for the attack has been released.

## Job Fair on Tuesday Helps Seekers

Making professional career connections isn't as easy as it sounds, but the Urban League of Portland just made it a little easier.

The empowerment organization will host its 13th annual job fair on Tuesday, March 22 from 10 a.m. to 4 p.m. at the DoubleTree Hotel next to Lloyd Center. The event is free and open to the public.

As one of the premiere career fairs in the Portland metropolitan area, there will be more than 50 exhibitors representing industries such as banking, education, government, health care, media, insurance, sportswear and utilities.

Sponsors of the event include American Family Insurance, KBOO Radio, Portland General Electric,

Providence Health System and U.S. Bank.

For more information, call 503-280-2611. The Urban League of Portland helps empower African Americans and others to achieve equality in education, employment and economic security through a combination of direct services, outreach and advocacy.

### URBAN LEAGUE OF PORTLAND

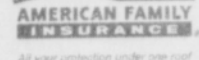
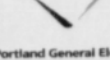
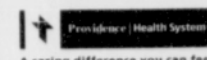
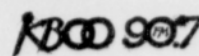
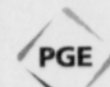
## 13th Annual Career Connections Job Fair

TUESDAY MARCH 22 10 a.m. - 4 p.m.

Doubletree Hotel, Lloyd Center Exhibit Hall, 1000 NE Multnomah

More than 50 exhibitors are participating from such industries as: **Banking, Education, Government, Health Care, Media, Insurance, Sportswear, Utility**

Sponsored by:



**FREE ADMISSION!**

For more information, please call the League at 503.280.2600

The 47th Annual **EBONY FASHION FAIR PRESENTS**  
*Living It Up*  
2004/2005

Sponsored by The Portland Chapter of The Links, Incorporated

Benefits Links Educational/Scholarship Fund

Friday, April 15, 8 p.m.

Oregon Convention Center, Portland, Oregon

TICKET PRICE: \$45.00 General Admission  
\$75.00 Patron

TICKETS AVAILABLE AT:

Geneva's Shear Perfection  
5601 NE M.L.K. Jr. Blvd  
503-285-1159

One Stop Record Shop  
1615 NE Killingsworth  
503-284-2435

Tondalayera Designers Salon  
5401 NE Cully Blvd.  
503-284-0712

Reflections Coffeehouse  
446 NE Killingsworth  
503-288-4070

Equilibrium Salon, 4410 N.E. Gilsan  
503-234-2414

Me Rae's on 42nd, 5852 N.E. 42nd  
503-287-5258

Dominique's Hair Salon  
222 N. Killingsworth, 503-285-3758

or from any Links Member

FOR MORE INFORMATION CONTACT: 503-638-7139 503-245-5156 503-281-3446  
Ticket prices include 1 year subscription to EBONY or 6-month subscription to JET www.ebonyfashionfair.com

Advertise in The Portland Observer 503-288-0033



So Good, You Can't Stop Thinking About Them!

Visit Safeway's Web site at [www.safeway.com](http://www.safeway.com)

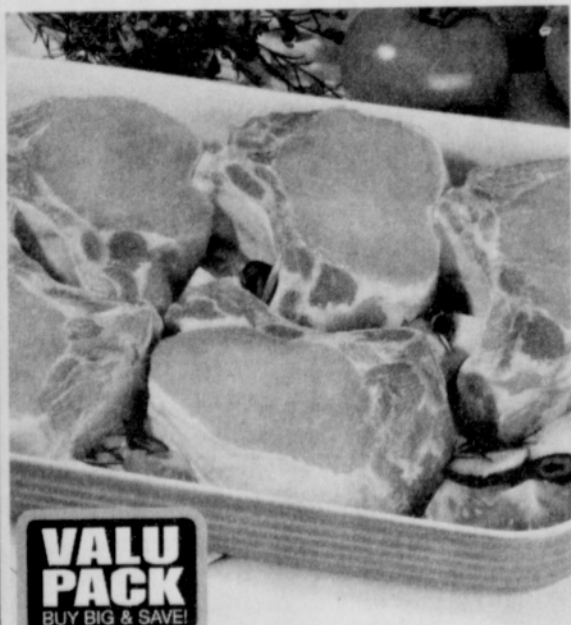
Available at Safeway:

WESTERN UNION MONEY TRANSFER

PRICES EFFECTIVE MARCH 2005						
Sun	Mon	Tue	Wed	Thu	Fri	Sat
			16	17	18	19
20	21	22				

Prices Effective Wednesday, 6 am March 16 thru Tuesday, March 22, 2005.

Items & prices in this ad are available at your local Safeway stores. No sales to dealers, restaurants or institutions. Sales in retail quantities only. Quantities of some items may be limited and subject to availability. Not responsible for typographical or pictorial errors. We reserve the right to correct all printed errors. On Buy One, Get One Free ("BOGO") offers, customer must purchase the first item to receive the second item free. BOGO offers are not 1/2 price sales. If only a single item purchased, the regular price applies. Manufacturers' coupons may be used on purchased items only — not on free items. ©2005 Safeway Stores, Inc.

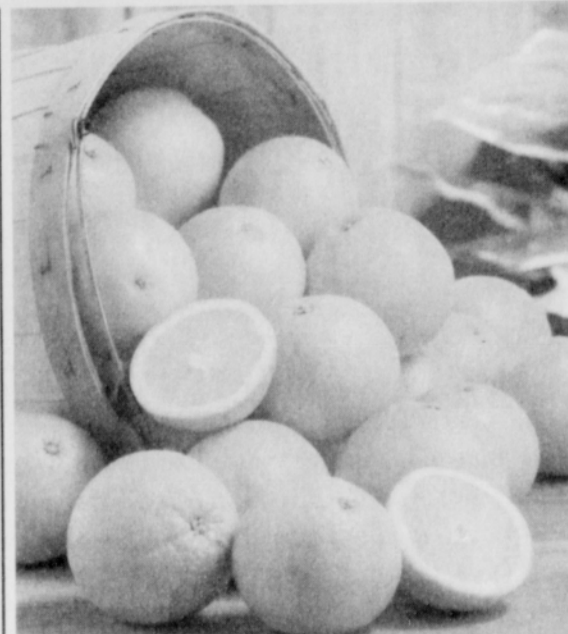


### Pork Loin Rib Chops

All natural. Valu Pack. SAVE up to \$3.00 lb.

Pork Loin Chops 2.19  
Safeway Club Price

**1.99** lb.  
Safeway Club Price



### Large California Navel Oranges

High in fiber and a great source of Vitamin C. Card Price: 33c lb. SAVE up to \$2.88 on 3 lbs.

**3 lbs for 99¢**  
Safeway Club Price



### Kellogg's Cereal

9.58 to 25-oz. Selected varieties. Card Price: \$3.00 ea. SAVE up to \$4.58 on 2

**2 for \$6**  
Safeway Club Price



### Lucerne Large Eggs

5-dozen. Grade AA. Limit 2. SAVE up to \$3.00

**3.99**  
Safeway Club Price

Now the savings are in the Card!

ALL LIMITS ARE PER HOUSEHOLD PER DAY!