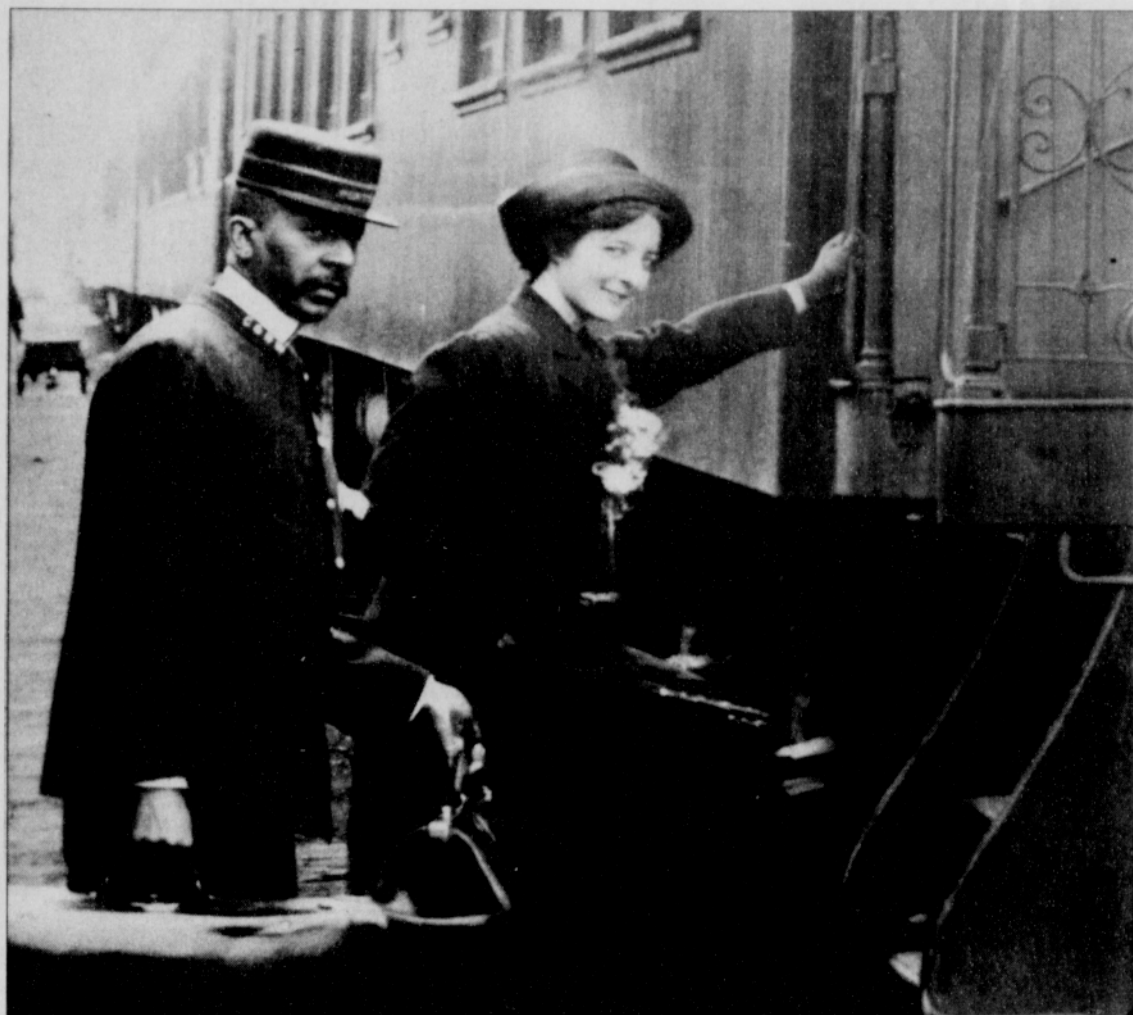


Black History Month

Era of Trains Divided by Race Pullman porters were black, conductors white



A Pullman porter assists a woman boarding a train in Portland.

PHOTOS FROM SP&S COLLECTION/PROVIDED BY OREGON HISTORICAL SOCIETY

From the late 19th century to the mid-20th, Pullman trains were used as the primary long-distance transportation in the United States. Every train with Pullman cars had a white Pullman conductor, while the Pullman porters were all black men.

The occupation of a Pullman porter appeared to be cosmopolitan and glamorous, as the men were able to travel frequently to become "the eyes and ears of civil rights leaders," said Larry Tye, in his book, "Rising from the Rails."

In reality, the repetitive work gave them 20-hour workdays at \$70 a month.

Much of a porter's income

came from tips, so being at the beck and call of every passenger was a necessity. After a 12-year battle, a group led by labor activist A. Philip Randolph established what's become known as America's first successful black trade union in 1935, The Brotherhood of Sleeping Car Porters.

A railroad dining car servicing Spokane, Portland and Seattle holds three African American workers.

Famous Black Americans

Find the name of each famous black American in the word search puzzle below.

- Sojourner Truth
- Henry Tanner
- Charles Drew
- WEB DuBois
- Jackie Robinson
- Martin Luther King
- Harriet Tubman
- Ernest Just
- Duke Ellington
- Jesse Owens
- Clyde McPhatter
- Benjamin Banneker
- Bill Pickett
- MA Rainey
- Allison Davis
- Nat King Cole
- Erroll Garner
- Joe Louis
- Thelonious Monk
- Scott Joplin

V	U	K	N	O	M	S	U	O	I	N	O	L	E	H	T	S	G	T	D
J	C	O	R	E	N	R	A	G	L	L	O	R	R	E	I	N	S	S	V
D	O	N	A	T	K	I	N	G	C	O	L	E	M	O	I	U	R	O	O
U	B	E	V	P	I	A	U	B	L	I	G	B	K	J	B	F	J	C	
K	L	E	L	V	I	F	P	J	R	D	Z	U	R	T	S	I	Q	O	Y
E	H	U	N	O	S	B	R	F	Y	J	D	E	S	L	C	L	N	U	S
E	R	V	J	J	U	L	M	F	W	B	H	E	V	V	O	L	A	R	R
L	E	A	B	F	A	I	Y	T	E	T	N	Q	C	Y	T	P	M	N	E
L	N	K	U	J	W	M	S	W	U	R	O	Z	X	E	T	I	B	E	T
I	N	W	H	C	F	O	I	L	E	G	Z	Z	E	X	J	C	U	R	T
N	A	B	X	K	H	M	N	N	S	X	L	W	J	K	O	K	T	T	A
G	T	O	O	S	D	I	M	W	B	N	W	J	Z	A	P	E	T	R	H
T	Y	P	R	L	T	A	N	Z	R	A	E	D	R	G	L	T	E	U	P
O	R	M	S	R	R	Y	O	B	K	H	N	W	S	V	I	T	I	T	C
N	N	M	A	A	G	J	N	P	M	A	Y	N	O	C	N	Q	R	H	M
Q	E	M	I	J	S	X	A	K	F	N	N	A	E	E	M	U	R	M	E
B	H	N	J	K	S	U	X	N	P	W	N	I	Y	K	S	V	A	K	D
H	E	G	T	W	E	R	D	S	E	L	R	A	H	C	E	S	H	H	Y
Y	A	L	L	I	S	O	N	D	A	V	I	S	O	B	J	R	E	L	L
D	U	N	D	N	O	S	N	I	B	O	R	E	I	K	C	A	J	J	C

ASSISTED LIVING in the neighborhood you call *Home*

ENJOY YOUR INDEPENDENCE. TAKE COMFORT IN OUR CARE

It's easy to call Irvington Village home. We're an assisted living residence right in your neighborhood, less than 20 minutes from everything you love about Northeast Portland—sporting events, concerts, Museums and more.

Lively Alberta Street is just four blocks from our building. Shop, visit with friends and family, eat at your favorite restaurant. When you live at Irvington Village. You are still part of the extraordinary community we call home.

At Irvington Village you live your life your way, without the responsibilities and chores of home ownership. Our staff is caring and supportive. We make sure you have the assistance you need so your family can enjoy being with you instead of taking care of you.

- ❖ Enjoy our new residence. Read in our cozy library. Throw a party in the community room. Visit family in the courtyard while the grand-children play in the neighboring playground.
- ❖ Enjoy our friendship. Share delicious home-cooked meals. Participate in musical programming. Cheer on your favorite team with fellow fans. Take up a new hobby.
- ❖ Take comfort in knowing you made sure you have the care you need.

IRVINGTON VILLAGE
A Covenant Assisted Living Community

420 N.E. Mason St.
Portland, Oregon 97211
(503) 546-9292

Developed and managed by Covenant Retirement Communities

Why are we successful?
Because of You.

2004 OREGON BUSINESS 100 BEST COMPANIES TO WORK FOR

Portland Teachers Credit Union is all about commitment...to our members, and each other. It's no wonder *Oregon Business* has ranked us as one of "100 Best companies to Work For in Oregon" five years running. See for yourself why we were so successful. An Equal Opportunity Employer.

PORTLAND TEACHERS CREDIT UNION
Real People. Real Value.

www.ptcucareers.com

Subscribe! 503-288-0033

Fill Out, Clip Out & Send To:

The Portland Observer
Attn: Subscriptions
PO Box 3137
Portland OR 97208

subscriptions are just \$60 per year
(please include check with this subscription form)

NAME: _____
ADDRESS: _____
TELEPHONE: _____

or email subscriptions@portlandobserver.com