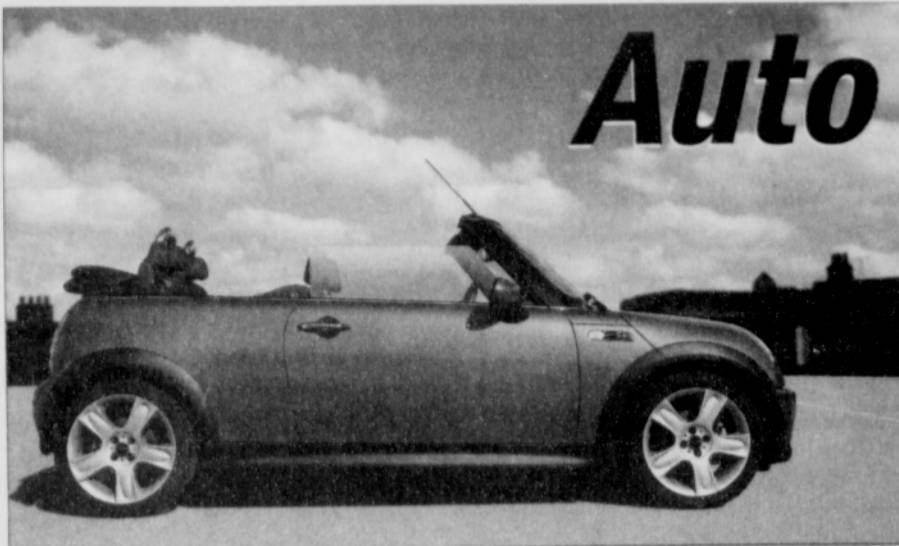
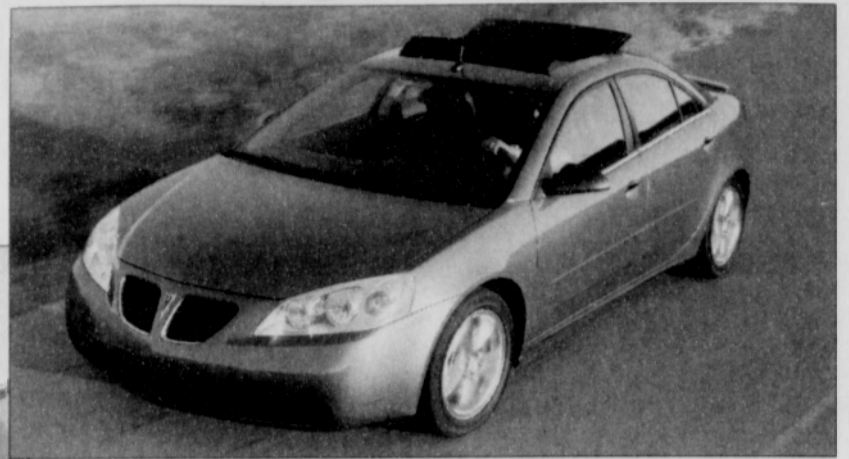


Auto Show Revs Up International event debuts



The MINI convertible is new for 2005.

The Pontiac G6, a new model for 2005 and one will be given away at the show.



The Portland International Auto Show, sponsored by the Metro Portland New Car Dealers Association, features the newest vehicle models and revolutionary car, SUV, trucks and motorcycle technology 44 manufacturers have to offer, Thursday, Jan. 27 through Sunday, Jan. 30, 2004 at the Oregon Convention Center.

The 2005 edition of the ever-popular, Portland International Auto Show will feature 36 car lines exhibiting hundreds of import and domestic vehicles, including everything from luxury cars, concept cars, economy cars, family cars and

Lexus RX 400H, the first luxury hybrid-SUV coming out in 2005.



sports cars to convertibles, station wagons, minivans, light trucks, 4-wheel drive vehicles, sport utility vehicles, exotics and motorcycles.

Entertaining displays and activities include the Extreme Trials Motorcycle Stunt Show featuring eight-time U.S. National Champion Geoff Aaron. Especially fun for children is Rock-It Robot, the 9 foot tall goodwill ambassador and an Auto Show for Kids, in which 2 to 6 year olds get to test drive

mini versions of grown-up vehicles.

Tickets are available at www.portlandautoshow.com, and may also be purchased at the door. Discount coupons available from participating new car dealers and at metro-area McDonald's restaurants. Tickets are \$10 for adults, \$8 for seniors and \$5 for kids ages 6-12.

For more event information, visit www.portlandautoshow.com or call 1-800-251-1563.

Portland Observer Auto Review

Chrysler Taking the Auto Industry Back

News and reviews on new motor vehicles

The Daimler-Chrysler Company has taken the auto industry back. The West Coast is looking at American Auto industry once again. Chrysler's 300 series, Crossfire and PT Cruiser has many consumers talking.

Chrysler excels at the design of the Chrysler 300 series and Crossfire Roadster. The 300 has a big bold distinctive styling. The Mercedes influence can be seen through out the exterior and interior of these vehicle. The Crossfire has a hot rod style with a romantic shape.

The Chrysler 300 appeals to both young and old. Its bold dramatic style with luxury class is undeniably outstanding for a sedan in its class. The long hood move smoothly down until it drops off to a massive front grille. The sedan roofline is low and carved, which beautifully complements the appearance of the bodylines. The interior of the vehicle has a very clean cockpit with satin silver center stack

markedly quiet to ride in. The spacious cabin is comfortable with enough legroom for a taller individual to ride with out being cramped.

Although this is a family sedan, it feels like a sports sedan in a big package. The rack and pinion steering in this vehicle is commands performance. It is performance is responsive and confident.

The 300c feels as solid as it looks. The Chrysler 300 has 3 choices of engines the 2.7 liter V6, 3.5 liter V6, and 5.7 liter Hemi V8. I test drove the 3.5 liter V6 that provide enough power for cruising the highways. The 3.5-liter V6 has the option of a four or five speed transmission. The V8 introduces new technology; a multi-displacement system that allows the engine to operate on four cylinders until all eight

efficiency. Base price ranges from 23,000 through 33,000 depending on the engine of choice.

The Crossfire Roadster is a two-seater sports car full of fun. From the first turn the key you will hear the growling of the engine.



Chrysler Crossfire Roadster

Tested Vehicle information: Priced at \$41,195; Engine: 3.2L; Transmission: Five-speed automatic

may find yourself step on the accelerator just to hear it. It's based heavily on the Mercedes-Benz SLK. It combines American design with German engineering. The Roadster had a more traditional profile than the fastback rear of the coupe. The body style gives it a distinction from other ordinary sport cars like Toyota, BMW and Mazda.

The Crossfire has solid, but comfortable ride with precise steering. Although it has limited cornering ability, because Chrysler tuned it for a more relaxed cruising than all-out sports driving. The performance of the vehicle will satisfy most drivers. The Crossfire Roadster attract all kinds of attention.

Chrysler it is your turn to stand up and take a bow. The Crossfire Roadster and Chrysler 300 has the consumer looking your way for their next vehicle. The attention I received while driving 300 and Crossfire was over whelming, several positive comments. In my opinion Cadillac and BMW are going to



2005 Chrysler 300C
Tested Vehicle information: Price: \$34,080; Engine: 5.7L; Transmission: Five-speed automatic

console that was easy to navigate through the controls. Chrysler engineers have been reducing interior and wind noise in its new vehicle, with its own aero-acoustic wind tunnel for testing. It is not surprising to find the 300C is re-

needed. The transfer from 8-4-8 cylinders happens in 0.4 seconds and undetectable by the driver. The MDS system allows the engine to operate on four cylinders when power demands are minimal for an up to 20-percent increase in fuel

LIVE MUSIC Again! @

BILLY REED'S RESTAURANT & BAR

2808 NE MLK
503-493-8127 www.billyreeds.com

Watch for more coming dates
Lets Do it again!

Fairly Honest Jon
Wed 1/26/05 \$3 cover

DJ Chata Man
Thu 1/27/05 \$3 cover

Chata Addy & Susuma
Fri 1/28/05 \$3 cover



Randy Star & The Flirt Band
Sat 1/29/05 \$3 cover

Kenney Polson Jazz
Sun 1/30/05 No Cover

2005 Peninsula Little League

(Serving the Youth of Inner North & Northeast Portland ages 5-15)


Softball & Baseball Sign-ups
(\$85.00 per player)

503-993-0846

Peninsula Park Community Center
700 N Portland Blvd
February 5th & 12, March 5th 2005
10:00 am - 2 pm
&
Portland Observer
4747 NE MLK Blvd
Hours: 10 am - 5 pm (Mon-Friday)

Cash Connection Supports

Martin Luther King Jr. celebration, and Black History Month



We give payday advances checks cashed

Post-dated checks cashed and held until payday

Checks cashed (any kind -- no ID required)

fast service @ no lines @ low rates

CASH CONNECTION

503.287.MONY

5600 MLK Jr. Blvd • Portland

loans • fax service • 2-day tax refund loans • electronic tax filing
free money orders

open mon-thur, 9am-7pm
fri, 9am-8pm sat, 9am-7pm
sun, 10am-4pm

WESTERN UNION

"The fastest way to send money"