


50¢



**Turn Your Clocks Back**  
Daylight Savings Time ends at 2 a.m. Sunday

**Make Your Vote Count**   
Ballots due Tuesday at 8 p.m.

# The Portland Observer

'City of Roses'

Volume XXXIV • Number 42

Established in 1970  
Committed to Cultural Diversity

www.portlandobserver.com

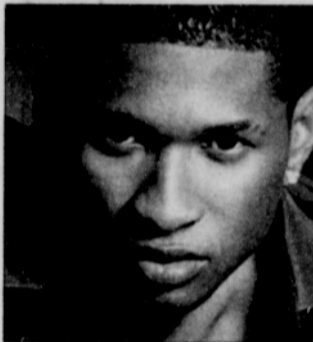
Wednesday • October 27, 2004

## Week in The Review

### U S Blamed for Ambush

Iraq's interim prime minister blamed the U.S.-led coalition Tuesday for "great negligence" in the ambush that killed about 50 Iraqi soldiers heading home after graduation from a U.S.-run training course, and warned of an escalation of terrorist attacks.

### Usher Hip Hop Artist of Year



Usher won Hip-Hop Artist of the Year and Hip-Hop Song of the Year at the Radio Music Awards. Linkin Park grabbed the Alternative Rock Song of the Year and Rock Artist of the Year.

### Bush Signs Corporate Tax-Cut

With no fanfare, President Bush signed the most sweeping rewrite of corporate tax law in nearly two decades, showering \$136 billion in new tax breaks on businesses, farmers and other groups.



### Rehnquist May Return to Work

Chief Justice William H. Rehnquist may be back

on the job next week, although some physicians questioned whether his treatment for thyroid cancer would sideline him longer.

### Police Kill Boston Fan

Boston police said they would quit using the pepper-spray gun that killed a college student during a rowdy Red Sox celebration, switching to a weapon that fires the pellets at a lower velocity.

### Violent Crime Down

Violent crime fell last year, with only a slight uptick in murders marring the overall trend of fewer crimes across the country, the FBI said in its annual crime report.

### Stolen Lyrics Returned to Bono

A long-lost briefcase full of notes and lyrics that were intended for the 1981 U2 album "October" has been returned, 23 years after it was stolen at a Portland concert.

## Vote Comes In Turnout looks huge

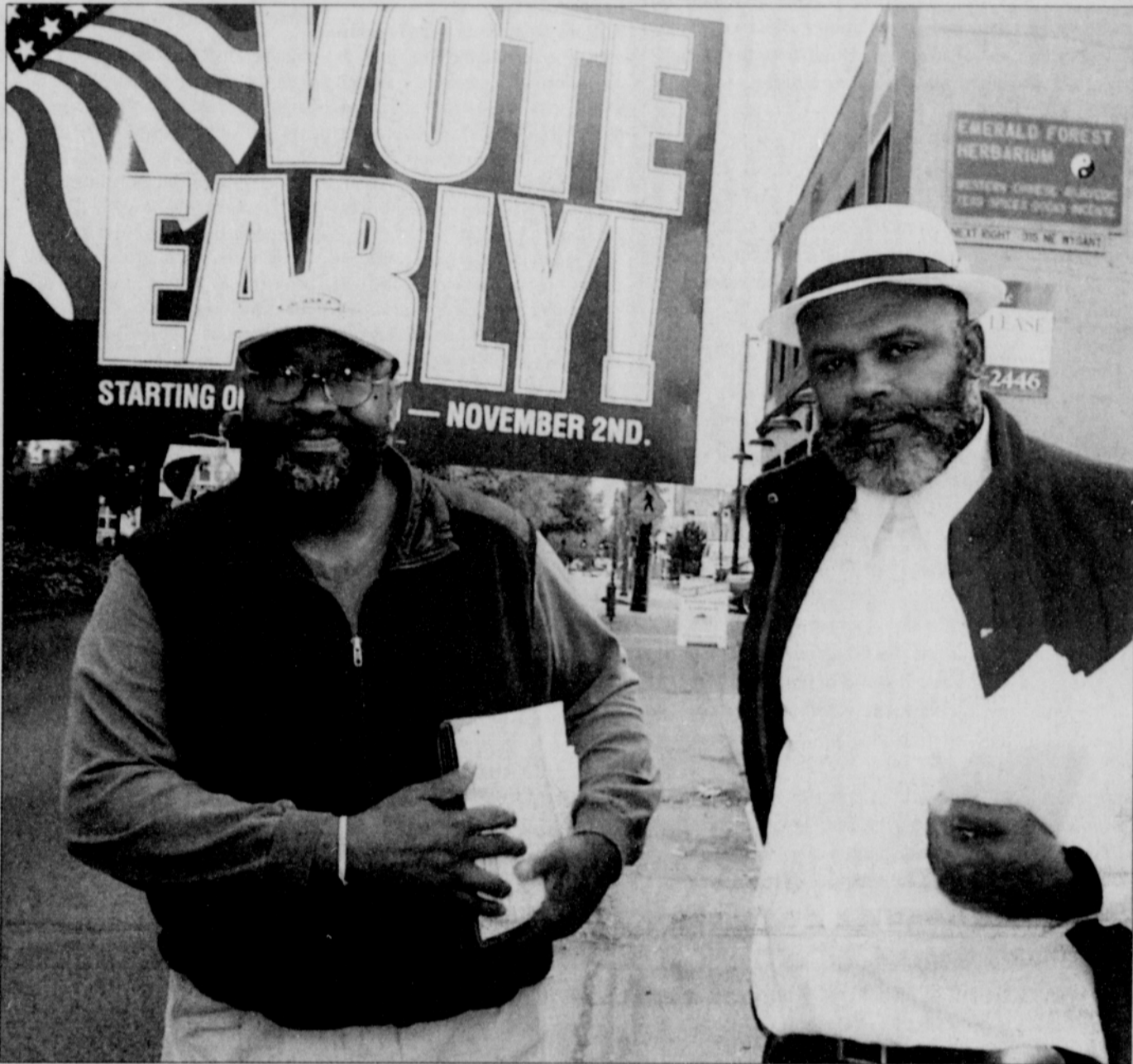


PHOTO BY MARK WASHINGTON/THE PORTLAND OBSERVER

Sam Smith (left) and Isham Harris hit Northeast Martin Luther King Jr. Boulevard with nonpartisan information about voting rules and rights.

BY JAYMEE R. CUTI

THE PORTLAND OBSERVER

More people are voting in the Nov. 2 presidential election and ballots are coming in sooner than in the 2000 election, report both local and national elections officials.

The key to victory for either Democrat Sen. John F. Kerry or Republican George W. Bush is expected to be the turnout of supporters from each campaign. Polls show the race is too close to call.

The Multnomah County Democratic Party office in northeast Portland is being swamped with volunteers, assigning canvassing and phone bank jobs to a record number of people that have offered their time and services for the cause.

"A lot of us feel like this is the last stand. People are fighting for our core beliefs of what America should be like," said Jeff Merrick, chairman of the Multnomah County Democrats.

According to figures from his office, 20,000 people are currently volunteering for the Oregon Democrats, which is more than in any other state.

"This is unprecedented. We've set a new bar that might be hard to meet in the future but this is definitely an unprecedented year," Merrick said.

The Multnomah County Elections office says voter turnout has increased overall in this election and voters are turning ballots in sooner.

"The numbers have gone up overall," said Eric Sample, a spokesman for the elections office.

As an example, four days into the November 2000 presidential election in Oregon, 13 percent of ballots were received, compared to four days into this general election with 16

continued ▼ on page A7



PHOTO BY MARK WASHINGTON/THE PORTLAND OBSERVER

Allison Hanson of southeast Portland is one of hundreds of local residents who struggles to find affordable housing.

## Public Housing in Crisis

### Section 8 cuts may reduce vouchers

BY JAYMEE R. CUTI  
THE PORTLAND OBSERVER

Already struggling to keep up with the need for housing vouchers for low-income residents, the Housing Authority of Portland now faces cuts to the program.

The agency faces a range of possible options

to reduce Section 8 subsidy costs to the tune of \$700,000, the amount of an annual shortfall from the federal government. Section 8 housing assistance enables low-income people and families to live where they choose with rental assistance payments.

Proposed cuts to the program include providing the same level of support to fewer people or less support to the same number of people.

Options include reducing the size of the subsidy

continued ▼ on page A8

## Ballot Drop Off Sites

Vote-by-mail ballots must be received at county elections offices by 8 p.m. on Tuesday, Nov. 2. Postmarks do not count.

### Multnomah County Elections, 1040 S.E. Morrison, 8 a.m. to 5 p.m.

#### Special Hours:

- Saturday, Oct. 30, 9 a.m. - 4 p.m.
- Monday, Nov. 1, 8 a.m. - 6 p.m.
- Tuesday, Nov. 2, 7 a.m. - 8 p.m.

### Pioneer Courthouse Square, Motor Voter Express Drop Site

- Friday, Oct. 29, Noon - 5 p.m.
- Saturday, Oct. 30, 10 a.m. - 5:30 p.m.
- Sunday, Oct. 31, 1 p.m. - 4:30 p.m.
- Monday, Nov. 1, 8 a.m. - 6 p.m.
- Tuesday, Nov. 2, 8 a.m. - 8 p.m.

### 24-Hour Ballot Drop Boxes

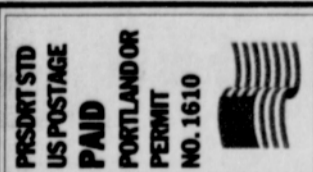
- A-Boy Supply, 7365 S.W. Barbur Blvd.
- Goodwill Store, 3134 N. Lombard St.
- Gresham Branch Library, 385 N.W. Miller Ave.
- Midland Branch Library, 805 S.E. 122nd Ave.
- U.S. Bank, NE 39th Avenue and Tillamook

Due to a change in store policy, Gresham Fred Meyer, Interstate Fred Meyer and Peninsula Fred Meyer are no longer available as drop site locations.

### Multnomah County Libraries

Ballots may be delivered to any Multnomah County library during normal operating hours through 8 p.m. on Tuesday, Nov. 2.

- Central Library - 801 S.W. 10th Ave.
- Gresham - 385 N.W. Miller St.
- Hollywood - 4040 N.E. Tillamook St.
- Midland - 805 SE 122nd Ave.
- Hillsdale Library - 1525 S.W. Sunset Blvd.
- Albina - 3605 N.E. 15th Ave.
- Belmont - 1038 S.E. 39th Ave.
- Capitol Hill - 10723 S.W. Capitol Hwy.
- Fairview-Columbia - 1520 N.E. Village St.
- Gregory Heights - 7921 N.E. Sandy Blvd.
- Holgate - 7905 S.E. Holgate Blvd.
- North Portland - 512 N. Killingsworth St.
- Northwest - 2300 N.W. Thurman St.
- Rockwood - 17917 S.E. Stark St.
- St. Johns - 7510 N. Charleston Ave.
- Sellwood-Moreland - 7860 S.E. 13th Ave.
- Woodstock - 6008 S.E. 49th Ave.



UNIVERSITY OF OREGON  
KNIGHT LIBRARY  
1299 UNIVERSITY OF OREGON  
EUGENE, OR 97403-1205