



The company for the Portland Center Stage production of *King Lear*, now playing through Sunday, Oct. 31 at the Newmark Theatre.

Stephanie Berry defies gender and racial barriers by playing 'The Fool' in Shakespeare's *King Lear*.

Nobody's Fool King Lear breaks gender and racial barriers

On the eve of the most momentous presidential election in modern American history, Portland Center Stage presents a production of William Shakespeare's *King Lear* that speaks to urgent issues of our time.

For director Chris Coleman, Lear's blinding super-ego parallels the excesses of a short-sighted super-

power. And with an update for modern times, Coleman has cast an African-American woman as 'The Fool,' Lear's closest confidante.

Actress Stephanie Berry transforms this role, traditionally acted by a man, into that of a sassy, truth-singing executive member of the king's inner circle.

King Lear is Berry's debut ap-

pearance at Portland Center Stage. She may be seen in the new HBO movie "Everyday People," where she plays the angry waitress. She recently appeared in Manhattan Theatre Club's Broadway production, "Drowning Crow." Berry was seen in the Seattle Repertoire and La Jolla Playhouse co-production of "When Grace Comes In." She

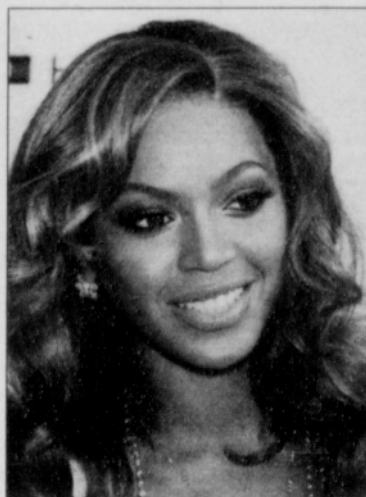
won the Obie Award in 2001, for "best performance" in her one-women show, *The Shannequa Chronicles*, *The Making of a Black Woman*.

Berry is founder and co-director of a Harlem-based theater company, Blackberry Productions and an advisor for the Blackberry Youth Ensemble. Television and film credits

include "Finding Forester," "Law and Order" and "Third Watch."

William Shakespeare's *King Lear* by Portland Center Stage is on stage through Sunday, Oct. 31 at the Newmark Theatre, 1111 S.W. Broadway. Tickets range from \$15 to \$55.

For more information, call 503-274-6588 or visit www.pcs.org.



Beyoncé Knowles

Beyoncé Injured in Dance Routine

(AP) — Beyoncé tore a leg muscle rehearsing dance moves with Destiny's Child and her injury could delay some of the group's promotional plans for a new album.

The singer tore her right hamstring, one of the muscles at the back of the knee, while practicing in Los Angeles Sept. 27 for an upcoming TV special.

"She overdid it," said Columbia Records spokeswoman

Yvette Noel-Schure.

"We're all keeping our fingers crossed that, because she's young and healthy, it heals fast. There are a lot of things in place that we may have to shift. Not the album, which is finished, but side (appearances)," Noel-Schure said.

The new album from the trio, which also includes Kelly Rowland and Michelle Williams, is titled "Destiny Fulfilled" and set for release Nov. 16.

Artists Open Studios to Public

Normally hidden from public view, Portland Open Studios offers a behind-the-scenes view of artists' work spaces. This self-directed tour of 94 artists' studios gives insight into the creative process for printmakers, sculptor, photographers, ceramic artists, fiber artists, metalsmiths, glass blowers and painters.

An added benefit is that participants will also get a peek into the richness of

neighborhoods that surround many studios and spark the creativity that defines much of the work.

Portland Open Studios is from 10 a.m. to 5 p.m. Saturday and Sunday, Oct. 9 and 10 in studios west of the Willamette River and Saturday and Sunday Oct. 16 and 17 for studios east of the Willamette.

For information and a tour guide map, visit www.portlandopenstudios.com.