

ART THERAPY Cultural paintings shared with nursing center



Artist Christine Easley (left) and Danuta Zbiegien, Porthaven Care Center admission coordinator, admire a display of artwork for the northeast Portland center's 50th anniversary celebration.

Local artist Christine Easley made Northeast Portland's Porthaven Care Center a richer place with cultural paintings during an art show and open house for the center's 50th anniversary.

Easley works at the nursing facility as a resident care manager.

Wine, cheese and cello music played by Miss Seymour also enhanced the celebration.

Easley's paintings in acrylics, watercolors and oils, are gaining acclaim. She recently won the Good in the Neighborhood t-shirt art contest and participated in the Gresham

Historical Art Society event last month. She has an art gallery and studio at 16426 N.E. Portland Blvd. She also does "Gallery to Go" home shows by request.

For more information about Easley and her work, call 503-257-8882.



Christine Easley's acrylic painting, 'From the Fields to the City,' depicts a woman and her son leaving a life of hard labor for new opportunities.

Silence and Desire

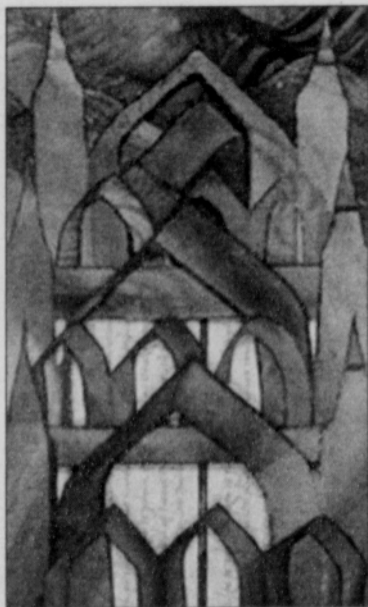
Talisman Gallery, 1476 N.E. Alberta St., features artists Pattie Palmer-Baker and Julie Ann Smith opening Last Thursday, Aug. 26, with an artists' reception that evening from 5:30 to 9 p.m.

Smith's series, featuring "Silent Spring" captures images of environmental landscapes, noting degradation of the Portland area over a lifetime here.

Palmer-Baker's series, "the Other Side of Desire" illustrates her poetry.

For more information, call 503-284-8800.

Pattie Palmer-Baker's "SJ Bridge Detail," appears at the Alberta Street Talisman Gallery beginning on Last Thursday, Aug. 26.



Asian Veggies Lecture

Sue Berge is on a mission to educate Western gardeners about Asian vegetables. A native of China, she demystifies Asian vegetables in a Tuesday, Aug. 31 lecture called Growing Winter Asian Vegetables at the Portland Chinese Garden, 127 N.W. Third Ave. Cost is \$12 for members and \$15 for the public. Call 503-228-8131, extension 2001 to register.

Martin Cleaning Service



Carpet & Upholstery Cleaning
Commercial & Residential Services



NEW PRICES EFFECTIVE JANUARY 2004

CARPET COUPON

1 CLEANING AREA
Pre-Spray Traffic Area \$40.00
Small Hall Included

CARPET COUPON

1 CLEANING AREA
Pre-Spray Traffic Area \$40.00
Small Hall Included

STAIRS (WITH SERVICE) \$7.50 EACH

UPHOLSTERY CLEANING

| | |
|-------------------|----------------|
| Sofa (under 6ft.) | \$69.00 |
| Loveseat | \$40.00 |
| Sectional | \$99.00 and up |
| Chair or Recliner | \$25.00 and up |
| Throw Pillows | \$5.00 each |

CALL FOR APPOINTMENTS
(503) 281-3949