

Healthy heart advice for African Americans
See page A8 for details

African Americans in the U.S. military
See pages A3, A5 and A6



The Portland Observer

'City of Roses'

Established in 1970

www.portlandobserver.com

Volume XXXIII • Number 6

Committed to Cultural Diversity

Wednesday • February 18, 2004

Week in The Review

Researchers Reach Human Cloning Breakthrough

Researchers in South Korea have become the first to successfully clone a human embryo, and then cull from it master stem cells that many doctors consider key to one day creating customized cures for diabetes, Parkinson's and other diseases.

Infant Mortality Rises

U.S. infant mortality has climbed for the first time in more than four decades, in part because more women are putting off motherhood and then having multiple babies via fertility drugs, the government said.

Republican Students Offer Whites-Only Scholarship

A Republican student group at Roger Williams University is offering a new scholarship for which only white students are eligible; a move they say is designed to protest affirmative action.

James Yee, Army Muslim Confronts Discrimination

James Yee, a Muslim chaplain in the Army, spent 76 days in a prison cell while authorities tried to build a capital espionage case against him. Now he is free, the most serious allegations replaced by lesser ones like adultery and possession of pornography, and the military justice system itself is on trial.

Sept. 11 Panel Will Ask for Public Bush Testimony

The federal commission investigating the Sept. 11 attacks will soon ask President Bush, former President Clinton and their vice presidents to testify in public about possible warnings they might have received from U.S. intelligence sources before the attacks.

Nuclear Rivals, India, Pakistan Begin Peace Talks

Nuclear-armed rivals India and Pakistan began historic meetings aimed at preparing for a sustained peace dialogue on Kashmir and other disputes that have divided the neighbors for decades.

A CHAMPION'S Formula

Coach shapes on- and off-court wins

BY JAYMEE R. CUTI
THE PORTLAND OBSERVER

Unraveling the story of Jefferson High School's athletic director can only be told through his players' successes.

Marshall Haskins, head coach for the Jefferson boys basketball program since 2000, began his own basketball career in the same Jefferson gymnasium where he is now in charge.

Haskins says his own basketball diaries are now sealed. He prefers to focus on landing his players with careers after Jefferson.

"My goal is not to win a state championship, not to win a game. It's for my kids to go to college," said Haskins.

He makes good on that promise and has placed more than 60 athletes into collegiate programs. All graduating seniors on Haskins team continue to attend college.

"That you have that many African-American males going to college is a pretty big statement. Whether they go to the NBA is irrelevant if they better their lives and become adults and parents and become a better scope of people," he said.

But his off-court commitments have amounted to bragging rights for Jefferson's team. One of the smallest athletic programs in the city, Jefferson has only 700 students, but often competes against schools of 2,000.

Since Haskins has been at Jeff, the boys basketball team has won

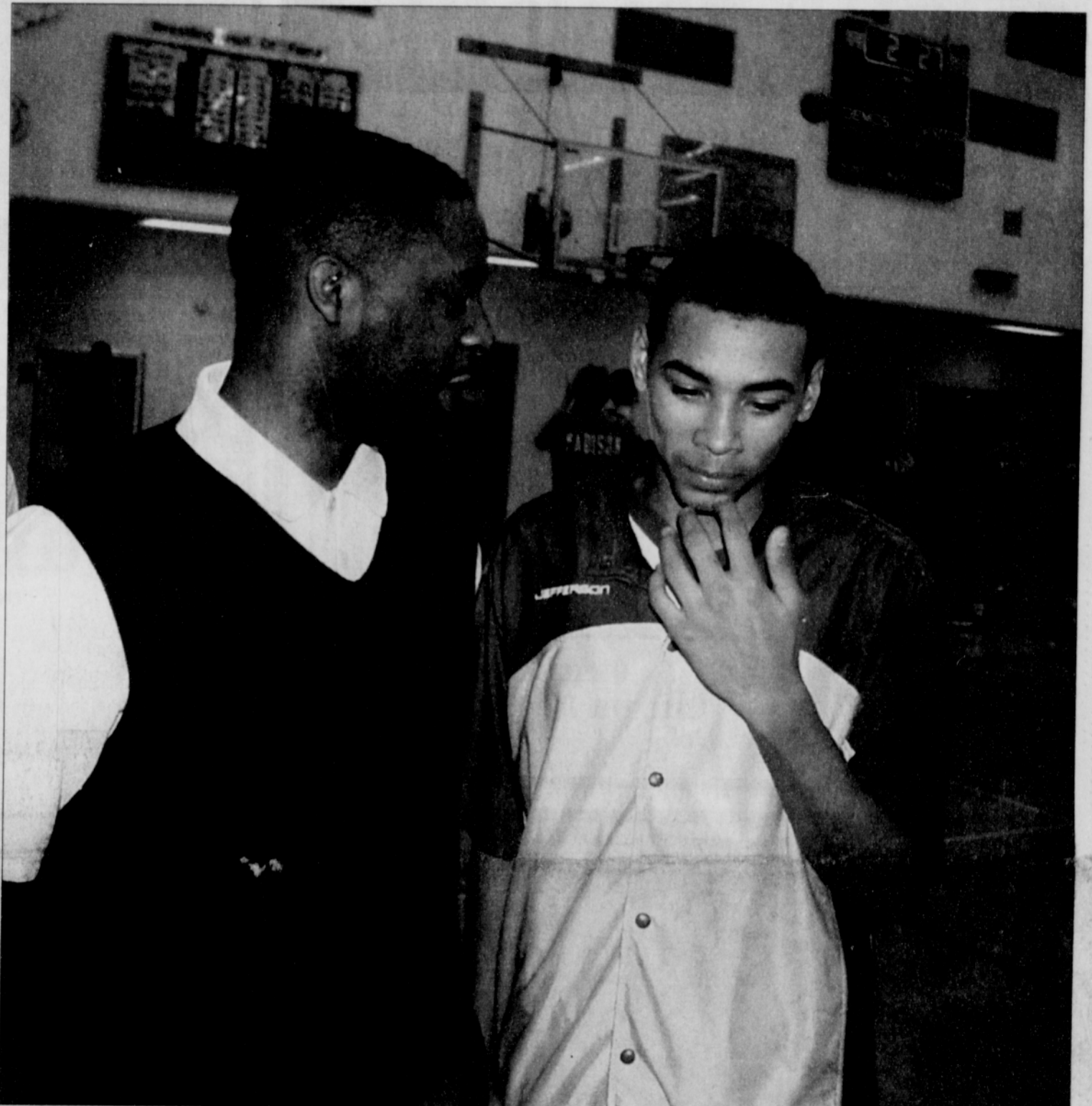


PHOTO BY MARK WASHINGTON/THE PORTLAND OBSERVER
Jefferson Coach Marshall Haskins gives some pointers to Marquis Hall. The winning coach makes good on a commitment to help his players succeed both on and off the court.

continued ▼ on page B7

Art Imitates Life at SEI

Student production addresses social ills

In honor of Black History Month, the Center for Self Enhancement Theatre Company will perform "If These Walls Could Talk," on Thursday, Feb. 19 at 6:30 p.m.

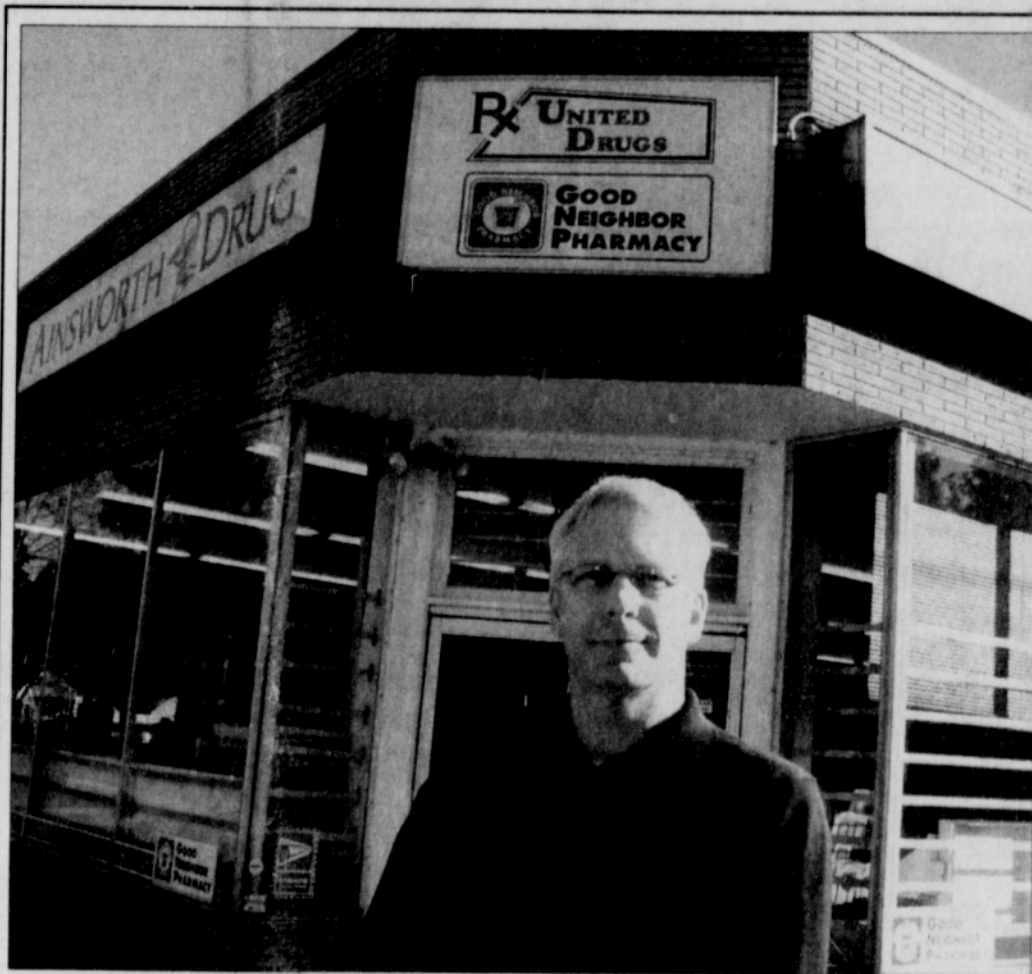
This original play, inspired by poetry and monologues of SEI students, is the center's first public dramatic production. The show features original songs by SEI's music production class.

"If These Walls Could Talk" follows a group of students surviving in the midst of a chaotic community and deteriorating school district. When faced with a community service project assignment, these students rally together to do something about the wall in front of their school.

Drug dealers and prostitutes frequent the wall and the students are determined to paint over the graffiti and challenge the dealers and prostitutes to leave. As they begin to work together, the students realize the community wall is not the only barricade they have to tear down - they discover that the greatest challenge is tearing down the walls they've built towards each other in their hearts.

"This stage play represents the next level of excellence in our after school program" said Marcy Bradley, director of youth programs at SEI. "This performance is what we've always envisioned when we set out to build an after school program that allows kids to dream big."

Seating is limited for this performance at 3920 N. Kerby Ave. Tickets are free, but must be reserved by calling 503-249-1721, extension 298 or by emailing ClaireB@selfenhancement.org.



Ken Hatch says high rents have driven him to a decision to close Ainsworth Pharmacy, an anchor and landmark drug store in the Concordia Neighborhood of northeast Portland for more than 50 years. Hatch plans to open another pharmacy on North Interstate Avenue in the Overlook Neighborhood.

PHOTO BY MARK WASHINGTON/THE PORTLAND OBSERVER

Ainsworth Drug to Close

Concordia Neighborhood to see end to era

BY LEE PERLMAN
THE PORTLAND OBSERVER

Concordia Neighborhood residents are bracing for the closure of a drug store that has served as a neighborhood institution for decades.

Ainsworth Drug is pulling up stakes and moving after serving the public for 50 years at 3002 N.E. Ainsworth St.

Owner Ken Hatch said the pharmacy will move this spring to a renovated building at 4027 N. Interstate Ave., between Mason and Shaver streets across from the Alibi Restaurant in the Overlook Neighborhood.

Why the change? Because the building owner "tripled our rent," Hatch said.

He said some pluses for the new loca-

tion is that it's on the new Max light rail line and contains a building that's large enough and has its own parking lot.

"It's an appropriate fit. It was very hard to find," Hatch said.

Hatch has operated Ainsworth Pharmacy for 11 years, but the store has served the neighborhood since the 1940s and at its current location since the 1950s. In addition to providing a full-service pharmacy, the location is anchor outlet

continued ▼ on page A2

PRISORT STD
US POSTAGE
PAID
PORTLAND OR
PERMIT
NO. 1610

University of Oregon
Knight Library
1299 University of Oregon
Eugene, OR 97403-1205