

**The Portland Observer**

USPS 959-680

Established 1970

4747 NE Martin Luther King, Jr. Blvd.,  
Portland, OR 97211

EDITOR-IN-CHIEF, PUBLISHER  
Charles H. Washington

EDITOR  
Michael Leighton

DISTRIBUTION MANAGER  
Mark Washington

CREATIVE DIRECTOR  
Paul Neufeldt

OFFICE MANAGER  
Kathy Linder

REPORTER  
Jaymee R. Cuti

The Portland Observer welcomes freelance submissions. Manuscripts and photographs should be clearly labeled and will be returned if accompanied by a self addressed envelope. All created design display ads become the sole property of the newspaper and cannot be used in other publications or personal usage without the written consent of the general manager, unless the client has purchased the composition of such ad. © 1996 THE PORTLAND OBSERVER. ALL RIGHTS RESERVED, REPRODUCTION IN WHOLE OR IN PART WITHOUT PERMISSION IS PROHIBITED.

The Portland Observer--Oregon's Oldest Multicultural Publication--is a member of the National Newspaper Association--Founded in 1885, and The National Advertising Representative Amalgamated Publishers, Inc, New York, NY, and The West Coast Black Publishers Association • Serving Portland and Vancouver.

POSTMASTER: Send address changes to Portland Observer PO Box 3137, Portland, OR 97208  
Periodical Postage paid in Portland, OR  
Subscriptions are \$60.00 per year  
503-288-0033 • FAX 503-288-0015  
news@portlandobserver.com • subscription@portlandobserver.com  
ads@portlandobserver.com • classifieds@portlandobserver.com

The Portland Observer would like to thank the following for their support of Minority Business Enterprise Development Week:

- Tri-Met
- Interstate Bar & Grill
- African American Health Coalition
- Fannie Mae
- Oregon Lottery
- Safeway
- City of Portland Bureau of Purchases
- City of Portland Environmental Services
- City of Portland Human Resources
- Multnomah County Contracts
- Washington Mutual
- Kimber Kimber & Associates
- Pacific Power
- Gundersons
- IBEW
- Neil Kelly
- Brooks Staffing
- US Army
- Portland Community College
- Portland Public Schools
- Tualatin Valley Centers
- Portland General Electric
- Small Business Administration
- Providence Health Systems
- New Seasons
- Housing Authority of Portland
- City of Vancouver
- OHSU School of Nursing
- Chase & Weil
- PCRI
- Roy J Enterprises
- Oregon Association of Minority Entrepreneurs
- Big City Produce
- Metro
- Port of Portland
- City Center Parking
- State of Oregon
- American Express
- Irvington Village

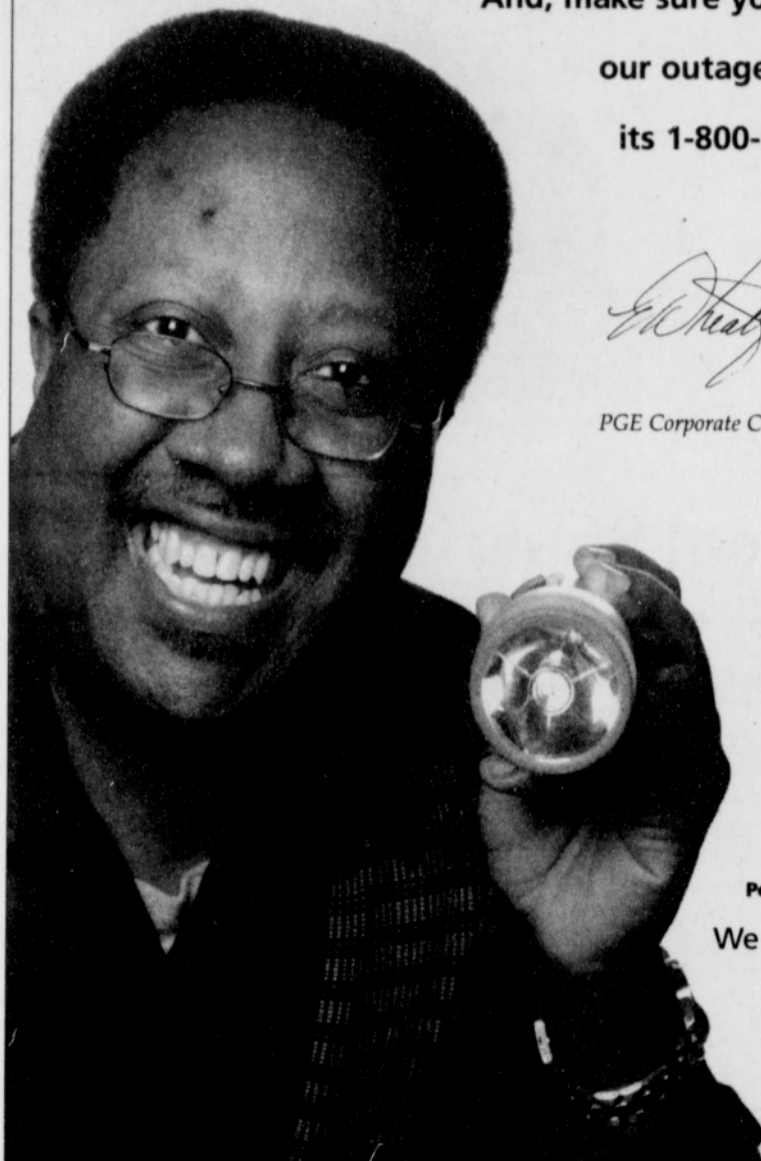
See our Special Section B, inside.

**"Think of it as a hand-held power company."**

Although rare, power outages can occur year-round.

If this happens, a flashlight can be a lifesaver when you need it. Besides the flashlight, toss in a portable radio, fresh batteries, a manual can opener, even a wind-up clock and you've got yourself a handy outage kit ready ahead of time.

And, make sure you've got our outage number... its 1-800-544-1795.



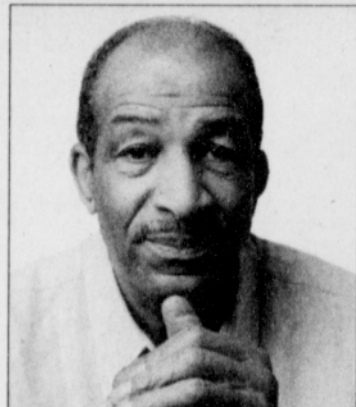
*Emmett Wheatfall*

Emmett Wheatfall  
PGE Corporate Compliance Specialist



Portland General Electric  
We Do This Every Day.

*Alcohol and drug addiction is color blind...*



*gender neutral...*



*...and targets all ages.*

*But help is available. Call our free and confidential HelpLine: 800-923-HELP*



www.orpartnership.org