

Good in the Neighborhood Community Leader Leaves for Seattle



PHOTO BY MARK WASHINGTON/THE PORTLAND OBSERVER
The group Friends of the Children with headquarters serving the north and northeast community, enjoy Saturday's "Good in the Neighborhood" parade on Martin Luther King Jr. Boulevard. The Rose Festival celebration of north and northeast neighborhoods was moved this year to King School Park.

PCC Cascade dean resigns for college post

Portland Community College's Cascade Campus in north Portland found itself down a leader when Executive Dean Mildred Ollee accepted the position of president of Seattle Central Community College.

Ollee's experience leading an urban institution and her commitment to diversity were cited as attributes that landed her the position.

Ollee is actually returning to Seattle Central, where she worked as a counselor and eventually vice president of student services from 1987 to 1995.

She became dean at the Cascade campus in 1995 and oversaw the planning and execution of a campus expansion project boosting campus enrollment to 18,000 annually.



PCC Cascade Campus Executive Dean Mildred Ollee

The expansion was not without its controversy. The Albina Christian Life Center, an African American congregation adjacent to the campus, was forced to relocate.

Ollee will begin her duties as Seattle Central president in September, replacing the college's Chancellor-Elect and President Charles Mitchell, who will return to his position as chancellor.

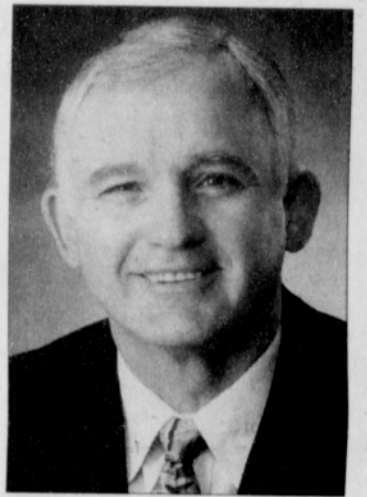
Retired Salem Educator to Lead PCC

College board names interim president

The Portland Community College Board of Directors named Dr. Gerard "Jerry" Berger interim president of Portland Community College.

Berger served as president of Chemeketa Community College in Salem from 1993 until his retirement in 2001. He also served the school in a variety of positions including dean of students, dean of college services, director of counseling and vice president.

"Dr. Berger has many years of experience managing a large community college and is a highly respected educational leader. The Board is very pleased that someone of his stature and experience is willing to help guide PCC through the next



Jerry Berger

year as we search for a permanent president," said PCC Board Chair Doreen Margolin.

Berger is active in state and local community and civic organizations. Gov. Kulongoski recently nominated him to serve on the State Board of Education.

His wife Vicki Berger is State Representative from District 20 in Salem.

Minority Entrepreneurs Expand

New operation opens at 188th and Burnside

The Oregon Association of Minority Entrepreneurs has begun operations of the OAME Rockwood Business Center, located in the Rockwood community at 188th Av-

enue and Burnside Street. The new facility will host five small businesses, a Housing Authority of Portland office, a multi-use conference room available for rent and the OAME branch office.

A grand opening will begin at 10 a.m. on Thursday, July 10, with brief statements by Sam Brooks, OAME president and chairman of the board, and Gresham Mayor

Charles Becker. Financial support for the center was made possible by Fred Meyer Stores, Albina Bank, and the City of Gresham. It offers support for start-up and active businesses that include business management assistance, technical assistance, marketing, access to capital, administrative support, and networking activities.

The OAME staff is multi-lingual, multi-cultural, and multi-ethnic. For more information, call 503-249-7744 or visit the web site at www.oame.org. OAME is a non-profit organization with the mission to promote and develop entrepreneurship and economic development for ethnic minorities in the state of Oregon.



Giving our best.

Celebrate July 4th!

Attention SENIORS

Safeway Senior Shuttle Service!
Introducing a great new service for our neighborhood senior citizens. FREE grocery shopping "shuttle service" to your nearby Ainsworth & MLK Blvd Safeway Food & Drug... TWICE a Month!
On or around the 4th and 15th of each month. This Service is FREE to seniors age 60 and over.
Senior citizens, grandchildren and others WILL NOT BE PERMITTED on the shuttle at any time.
LOOK FOR OUR SPECIAL "HAZ TRANSPORTATION" TROLLEY SERVICE SCHEDULE FLYER AT YOUR MLK BLVD SAFEWAY FOR COMPLETE DETAILS!

Sponsored by:
SAFeway FOOD & DRUG
AFRICAN AMERICAN CHAMBER OF COMMERCE OF OREGON

For More Information Call 503-572-0812

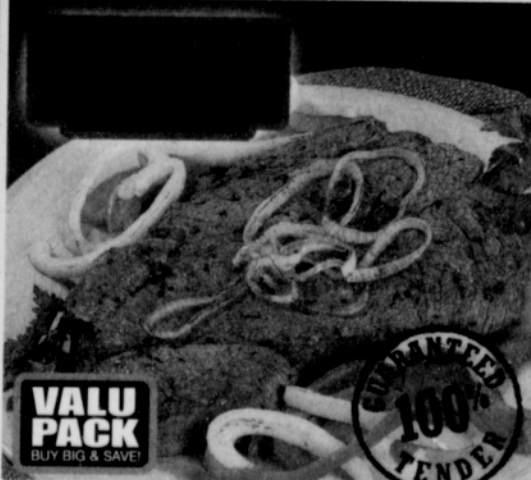
Visit Safeway's Web site at www.safeway.com

Available at Safeway!

WELFARE MONEY TRANSFER

PRICES EFFECTIVE JULY 2003

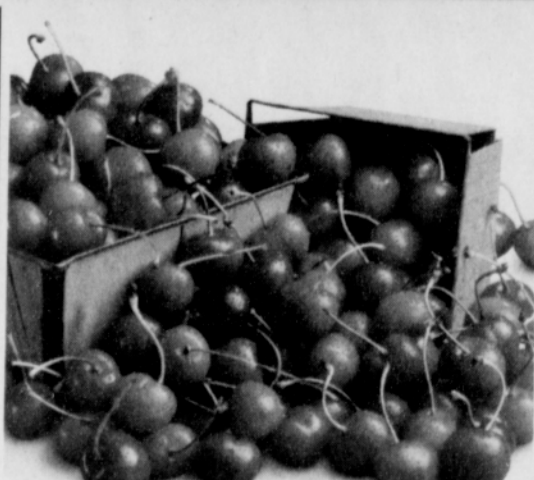
Sun	Mon	Tue	Wed	Thur	Fri	Sat
6	7	8	2	3	4	5



Rancher's Reserve Boneless Beef Chuck Steak

Valu Pack. Marinate and grill. Or Chuck Roast. SAVE up to \$1.31 lb.

1.88 lb.
Safeway Club Price



Dark Sweet Cherries

Picked at their peak of flavor! SAVE up to \$2.52 lb

1.47 lb.
Safeway Club Price



24-Pack Arrowhead Water

.5-liter bottles. SAVE up to \$3.50

4.99
Safeway Club Price



Wavy Lay's or Lay's Potato Chips

11.5 to 12-oz. Selected varieties. SAVE up to \$2.99 on 2

BUY ONE GET ONE **FREE**
Safeway Club Price

Now the savings are in the Card!

ALL LIMITS ARE PER HOUSEHOLD PER DAY!