

METRO *Life*

The Portland Observer

SECTION B

Community Calendar

Kennedy School Prom

Put on your fancy attire and bring you date to the McMenamins Kennedy School, 5736 N.E. 33rd, on Thursday, May 29 from 7 p.m. to 10 p.m. for a retro-styled prom for grown-ups. The vintage prom will feature a DJ spinning 80s hits, a photographer snapping photographs and awards for the best prom attire. 21-over-guests are encouraged to sneak off for a cocktail and cigar in the Detention Bar or steal a kiss under the stars in the outdoor courtyard. Tickets cost \$10 per person. For more information, call 503-249-3983.

Sign-up Fair for Kids

Applegate Elementary School will host a 'Fun in the Sun for Children' summer activities sign-up fair on Saturday, May 31 from 10 a.m. to 11:30 a.m. Attendees can sign up their children for free and low-cost summer activities for the months of June, July and August. All Programs are supervised by a trained staff member and many feature breakfast, lunch or a snack. Saturday's fair will feature ice cream and popcorn. For more information, call 503-916-6240.

Kidney Car Show

On Saturday, May 31 from 9 a.m. to 3 p.m. the First Annual Ron Tonkin Kidney Car Show will take place next to the Lloyd Center. The collection of cars will feature hotrods, classic cars and a selection of special interest vehicles. All proceeds from the free show will benefit the National Kidney Foundation of Oregon and Washington to support kidney dialysis and transplant patients and their families.

Canoe Northwest Rivers

Portland Parks and Recreation will offer trips half-day and full-day trips of the Tualatin, Columbia and Willamette Rivers all summer long. The quiet and graceful river trips will offer participants to take a close-up look at nature and wildlife. They are designed for paddlers of all experience levels. For more information and a complete list of dates, call 503-823-5132.

Ebony Ski Club Party

Interested in skiing or snowboarding? Interested in skiing or snowboarding scholarships for children? You might be interested in attending the Ebony Rose Ski Club New Member House Party and Mixer on Saturday, June 7 from 9 p.m. until the people go home at 422 N.E. Going St. For more information, call 503-287-5105.

Sabin Sidewalk Show, Sale

On Saturday, June 7 at the Starbucks Coffee House on Northeast 15th and Fremont, there will be a sidewalk show and sale kickoff to benefit the Sabin Elementary School art program. Students will show off their talents by painting on easels, there will be student art for sale and a silent auction on selected pieces. Following the kickoff the sidewalk sale will continue throughout the summer.

Summer Nature Day Camp

Portland Parks and Recreation will host two week-long summer day camps in June for children aged 5 to 12 years. Kids will get firsthand experience with nature through hiking, scientific observations, games, forest crafts and story-telling. Cost is \$180 per week. For more information and to register, call 503-823-5132.

Festival to Bloom



Waterfront Village in Waterfront Parks is still the Portland Rose Festival's most popular attraction, boasting almost a mile of thrill rides, musical acts, international food and family-pleasing games and exhibits. The festival begins at 5 p.m. Thursday and continues through June 30.

'Good in the Hood' joins Rose Festival events

With summer blooms comes the Portland Rose Festival, beginning Thursday and continuing through June 30.

"Fun, Fantasy and Fanfare" is the theme of this classic spectacle with returning attractions such as the downtown Waterfront Village carnival, Saturday's electrical Starlight Parade and the Saturday, June 7 Grand Floral Parade, the second largest all-floral parade in the country.

"Good in the Neighborhood," a multicultural music & food festival, premieres this year as a Rose Festival event at King Park, on Saturday, June 28 and Sunday, June 29. The event will feature more than 30 performances by dancers, bands and vocalists, a kid's area with live animals and storytelling, and an ethnic marketplace.

The festival officially opens Thursday when the 2003 Rose Court addresses the crowd at the Queen's

Coronation at the Arlene Schnitzer Concert Hall. Fireworks will then set the night's sky ablaze.

A concert series premieres this year at the Waterfront Village with performances from Emerson Drive, Sister Hazel, Edwin McCain and The Dave Matthews Cover Band.

In addition, a Wild Science Pavilion on the waterfront will provide hands-on exhibits where kids and their parents can be amazed and entertained by the mysterious world

around them.

The work of artists and artisans from throughout the United States and music, theater and hands-on art for kids will be on display in the downtown South Park Blocks during the Portland Arts Festival the week-end of June 13 through June 15.

Tickets and scheduling information are available at the Tri-Met office at Pioneer Courthouse Square and a Rose Festival brochure is available on buses or MAX.

SEI Talent Show, Basketball Shootout Targets Youth Violence



Bill Bellamy

A youth violence prevention talent show and celebrity basketball shootout will be held this weekend to bring a strong message on summer violence prevention to local kids.

Self Enhancement, Inc. and Strong Ties, Inc. are sponsoring the "Increase the Peace" events with Hollywood celebrities and professional athletes bringing strong messages against violence by inner-city youth.

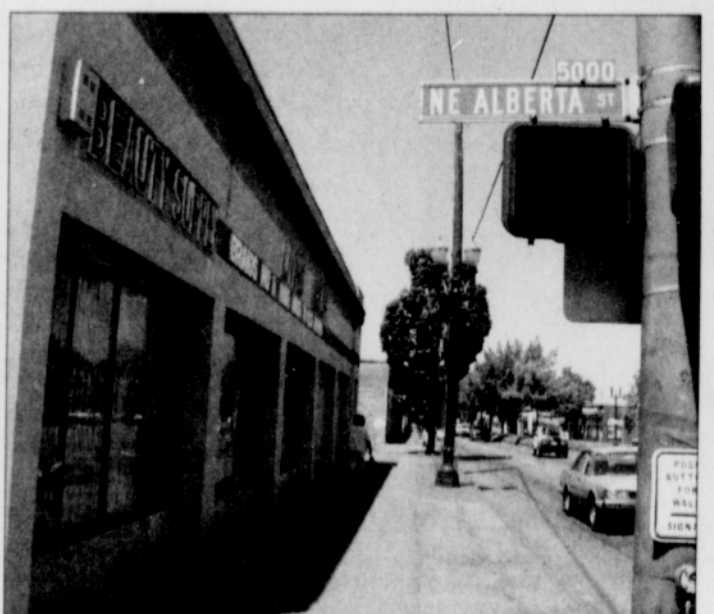
Celebrities scheduled to appear are Bill Bellamy, the comedian and actor from UPN's "Fastlane," Antwan Tanner, the actor in CBS's "The District," Tony Delk of the Boston Celtics, and Khalil Kane, the actor in UPN's "Girlfriends."

Events begin at 6:30 p.m. Friday, May 30 with a youth talent show at The Center for Self Enhancement, 3920

continued ▼ on page B6



The owner of the former Raven Creamery, at 3303 N.E. Martin Luther King Jr. Boulevard, is looking for a buyer to redevelop the nearly half-block site, after McDonald's Corp. gave up on plans to turn the parcel into a drive-thru restaurant.



Negotiations continue on attempts to lure a major grocery store, housing and a public plaza to a long stretch of properties between Alberta and Killingsworth on the west side of Martin Luther King Jr. Boulevard.

PHOTOS BY MARK WASHINGTON/THE PORTLAND OBSERVER

Progress on King Developments Inch Ahead

Most plans envision new storefronts and housing

BY LEE PERLMAN
THE PORTLAND OBSERVER

You can't see it, but plans for new development are advancing up and down Northeast Martin Luther King Jr. Boulevard.

Some of the major projects are proposed at the former King Food Mart site at Fremont, a

large vacant lot at Beech, the former Weimers Hardware site at Shaver, and a blocks-long development on the west side of the boulevard between Alberta and Killingsworth.

To the south, McDonald's Corp. has abandoned its plans to build a restaurant on the former Raven Creamery property at 3303 N.E. Martin Luther King Jr. Blvd., but other developers are showing interest in the site.

Last month the Portland Development Commission signed on to the development of

the King Food Mart property with Abe Killings, Ed McNamara, Ron Sykes and LRS Architects. The partnership plans to build a two-story office and commercial structure with adjacent row houses. If all goes well, they could begin construction next year.

PDC, which also owns the Beech Street site, is negotiating with Grand Central Baking Co., for development of a new 12,000

continued ▼ on page B6