



PHOTO BY RON WASHINGTON/THE PORTLAND OBSERVER

# First Test Run for Interstate Max

A light-rail car was pulled along the new Interstate Max line Tuesday in the first test of the new tracks down Interstate Avenue. The train was pulled from the Rose Quarter on a one-mile alignment test to check clearance as far as North Graham Street. Construction on the Tri-Met light-rail extension from the Rose Quarter to the Expo Center is 75 percent complete.

## McDonald's Gives Up on Site

Decision ends drive-thru controversy on Martin Luther King

McDonald's will not be building a new drive-thru restaurant on Northeast Martin Luther King Jr. Boulevard and will instead divert money for restorations of existing Portland locations.

Although the Planning Bureau approved the proposed design plans for a McDonald's on the 3300 block of King last summer, the decision caused a year and a half long controversy for local neighbors.

Many Boise neighborhood residents feared the drive-thru would compromise public safety by diverting traffic through quiet residential streets. Other residents said the restaurant proposal did not meet the criteria stated in the Albina Community Plan, which called for more pedestrian traffic and less auto-oriented business in the area.

But some long-time neighbors eagerly supported McDonald's interest in the area, because the new site would result in new jobs.

McDonald's sales have been in a state of decline. The company reported its first quarterly loss, \$343.8 million, for the fourth quarter of 2002. This year the company will open 360 new stores, as opposed to the 1,000 opened last year.



Oregon State Sen. Margaret Carter, D-Portland, meets with Nobel Peace Laureate Archbishop Desmond Tutu during his visit to Oregon last week. Tutu thanked Carter and the people of Oregon for their political help against the former apartheid regimes in South African and Namibia.

## Tutu Thanks Oregon Allies During Visit

Nobel Peace Laureate Archbishop Desmond Tutu on Thursday thanked State Sen. Margaret Carter, D-Portland and the people of Oregon for their work on enactment of the Oregon Anti-Apartheid Act of 1987, directing divestiture from the apartheid regimes in South Africa and Namibia.

"Margaret, thank you for doing this. God bless you," Archbishop Tutu said, of the landmark human rights statute.

The legislation was enacted through diligent efforts throughout the state, the work of the Albina Ministerial Alliance, Ecumenical Ministries of Oregon, the Oregon Catholic Conference, United Methodist Church, Lutheran Legislative Advocacy, Portland Chapter of the New Jewish Agenda, American Friends, Japanese American Citizens League, and scores of student organizations, including ASUO of the University of Oregon and the Black and Asian Law Student Association.

Speaking at Willamette University, Archbishop Tutu repeatedly thanked the people of Oregon for helping to free millions of South Africans in a non-violent way.



Giving our best.

Happy Easter from Safeway!

### Attention SENIORS

#### Safeway Senior Shuttle Service!

Introducing a great new service for our neighborhood senior citizens. FREE grocery shopping "shuttle service" in your nearby Answorth & MLK Blvd Safeway Food & Drug... TWICE a Month! On or around the 4th and 15th of each month. This Service is FREE to seniors age 60 and over. *Senior Seniors - Complimentary and return WILL NOT BE PERMITTED on the 15th of any year.*

LOOK FOR OUR SPECIAL "RAZ TRANSPORTATION" TROLLEY SERVICE SCHEDULE FLYER AT YOUR MLK BLVD SAFEWAY FOR COMPLETE DETAILS!

Sponsored by: SAFEWAY FOOD & DRUG OFFICIAL MEMBER CHAIRMAN OF COMMISSION OF OREGON

For More Information Call: 503-572-0812

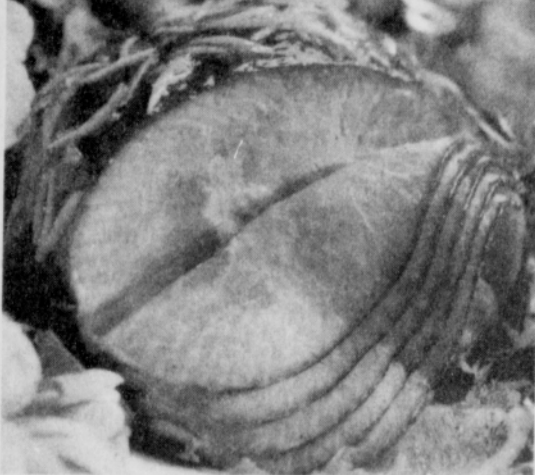
Visit Safeway's Web site at [www.safeway.com](http://www.safeway.com) Available at Safeway.

PRICES EFFECTIVE APRIL 2003

Sun	Mon	Tue	Wed	Thur	Fri	Sat
20	21	22	16	17	18	19

Even Florida Wednesday 1st and April 16th. Tuesday April 22, 2003.

Items & prices in this ad are available at your local Safeway store. No sales to health-care facilities or individuals. Sales to retail quantities only. Quantity of items shown may be limited and subject to availability. Not responsible for transportation or parking charges. We reserve the right to remove all printed errors. On Buy One, Get One deals, \$10.00/1 offer, customer must purchase the first item to receive the second item for \$10.00 when you buy \$10.00. If only a single item purchased, the regular price applies. Manufacturer's coupon not for cash or purchase item only. See ad for details. ©2003 Safeway Stores, Inc.



### Safeway SELECT Spiral Sliced Hams

Honey glazed. Half or Whole. Or Cook's Spiral Sliced Half Ham \$1.98 lb. SAVE up to \$1.98 lb.

**1.58** lb. Safeway Club Price



### Fresh Strawberries

1-lb. container. Great with Angel Food Cake. Card price: \$1.50 ea. SAVE up to \$4.98 on 2

**2 for \$3** Safeway Club Price



### Safeway SELECT Ice Cream, Yogurt or Sherbet

Half Gallon. Assorted Regular, Light, Fat Free, No Sugar Added or Yogurt varieties. Card price: \$2.50 ea. Limit 2. SAVE up to \$1.98 on 2

**2 for \$5** Safeway Club Price



### Beaugard Large Yams

Rich in flavor and nutrition. SAVE up to 52¢ lb.

**47¢** lb. Safeway Club Price

Now the savings are in the Card!

ALL LIMITS ARE PER HOUSEHOLD PER DAY!