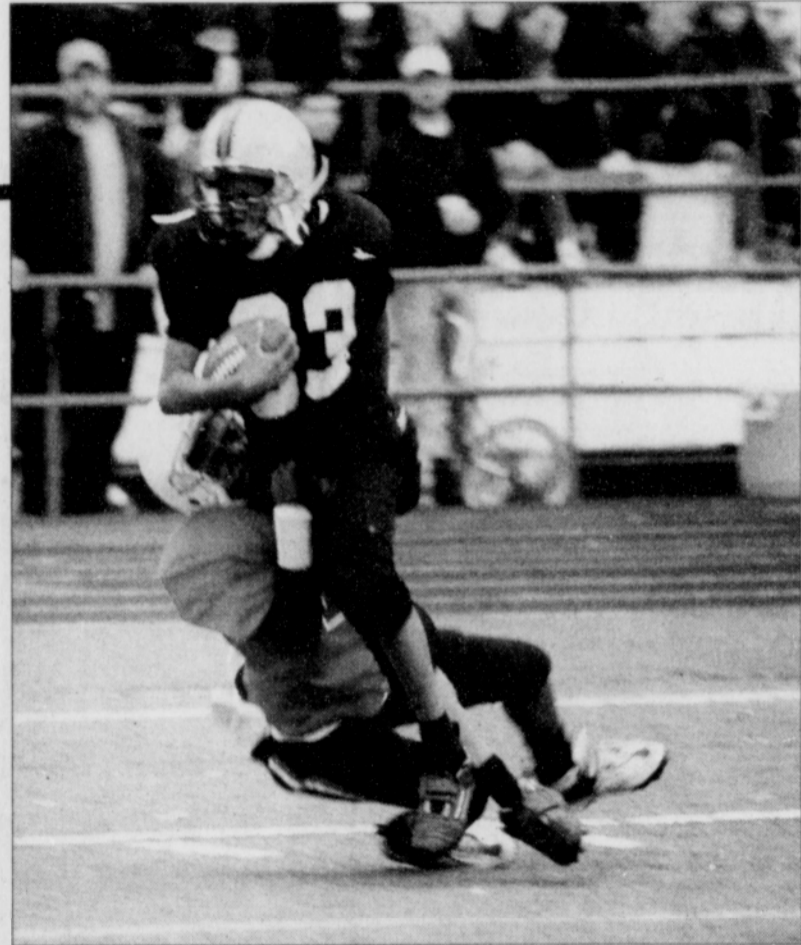


SPORTS / METRO

P.A.L. LEAGUE GAMES

A Roosevelt player makes a run for a gain during the 7th and 8th grade B Championship game between Whitaker and Roosevelt Middle Schools. Several teams competed last weekend in the Police Activities League Championships at Lincoln High School.

PHOTO BY DAVID PLECHL / THE PORTLAND OBSERVER



Serena Williams to Face Clijsters in WTA Finals



Serena Williams

(AP) — There's one more match to play before Serena Williams can call it a year, go count her millions and revel in ending

the season as the No. 1 player in women's tennis.

Williams will face No. 5 Kim Clijsters in the final of the WTA Championships on Monday night at Staples Center.

Although her ranking is secure regardless of the outcome, Williams will try to extend her 18-match winning streak, improve her 56-4 record, defend the title she won last year in Germany and take home the top prize of \$765,000.

If she does, the 21-year-old Floridian would become the first player in women's tennis to top \$4 million

in yearly earnings.

"Tomorrow is my last day and I'm hanging up the racket for a week and I don't want anyone to ask me any questions about tennis," she said.

Williams overcame 54 unforced errors to defeat No. 3 Jennifer Capriati 2-6, 6-4, 6-4. She hit 42 winners against Capriati, but won just four more total points.

"Our intensity levels were so high," Williams said. "She returned very well and hit some amazing shots."

Vikings Lose To Weber

Portland State will not advance to NCAA 1-AA Playoffs

For the second time in three years, a trip to Ogden, Utah will haunt the Viking football team.

On a day in which a soggy, soft turf bogged down Ryan Fuqua and the Portland State running game, the Vikings could not overcome Weber State, losing 20-14, and effectively eliminating any hope of reaching the NCAA 1-AA playoffs. In 2000, PSU lost to the Wildcats, 41-9, after coming into the game at Ogden with a 6-0 record and ranked second in the nation.

PSU had come into this game ranked 13th in the nation and had won four of five games. But the loss dropped the Vikings to 6-4 on the season, 3-3 in the Big Sky Conference. Meanwhile, Weber State ended a five-game losing streak and improved to 3-5, 1-5 on the season.

Portland State gained just 20 yards on the ground, and only a 318-yard passing performance by Justin Wood kept the Vikings close. Wood's passing total was a season high and threw for a pair of touchdowns.

Weber State ran 87 offensive plays, compared to just 57 for the Vikings.

Wood was 18 of 38 passing and had two balls intercepted as each team made three turnovers. Fuqua managed just 27 yards rushing on 11 carries. Wide receiver Jesse Levin caught seven passes for 131 yards - both season highs. Shinen made 12 tackles to go with his interception. Linebacker Marcus Green had 13 tackles in the game.

Portland State will conclude the season next week in a Big Sky Conference game at Montana State.

Top Athletes to Compete in Nike BorderClash

Runners from Oregon and Washington High School will face off

The top boys and girls cross country runners from Oregon and Washington will team up and race to prove which state truly rules the border on Sunday, Nov. 17 at Nike's World Headquarters for Nike BorderClash IV.

The high school that brings the most student spectators will win a visit from Olympic superstar Marion Jones. Last year Jones paid a visit to Beaverton High School.

All attendees will have the opportunity to meet a handful of Nike athletes including Alan Webb, National high school record holder for indoor mile, out-

door mile and 1,500m, 2001 Big Ten Conference Cross Country champion and 2002 Big Ten 1,500m champion, Bob Kennedy, two-time Olympian and four-time US Outdoor 5000m champion, Suzy Favor Hamilton, three-time Olympian, nine-time NCAA champion and

three-time U.S. Outdoor 1500m champion and Alberto Salazar, a two-time Olympian and marathon legend.

High School runners, who are fierce competitors during the race season, will team up under each state's respective flag to race along

a 4.2KM course through Nike's Campus. At 9:30 a.m., the day begins with a media race followed by a 10:30 a.m. girl's race, 11:15 boy's race and an awards ceremony at noon.

BorderClash IV takes place at North Campus Athletic Fields, Nike World Headquarters, in Beaverton. From downtown Portland, take Highway 26 west, exit at Murray Blvd., turn left onto Murray Blvd, dive one mile and pass Walker Road and turn right into Nike World Headquarters.

For race results, visit www.borderclash.com.

High School runners, who are fierce competitors during the race season, will team up under each state's respective flag to race along

a 4.2KM course through Nike's Campus. At 9:30 a.m., the day begins with a media race followed by a 10:30 a.m. girl's race, 11:15 boy's race and an awards ceremony at noon.

BorderClash IV takes place at North Campus Athletic Fields, Nike World Headquarters, in Beaverton. From downtown Portland, take Highway 26 west, exit at Murray Blvd., turn left onto Murray Blvd, dive one mile and pass Walker Road and turn right into Nike World Headquarters.

For race results, visit www.borderclash.com.

Police Activities League to Host Tournament

A middle school co-ed basketball tournament to support the Youth Center for Police Activities League of Greater Portland will take place on Nov. 29, 30 and Dec. 1 at Reynolds Middle School, 1200 NE 201st.

The tournament is double elimination, but a consolidation game will guarantee each team three games.

"We think it is important to provide youth teams with competitive athletic opportunities,"

PAL Youth Center Director Beth Faulhaber said. "At the same time this event is enabling us to better support and serve our PAL youth."

The money raised through collection of \$200 tournament fees

for each team will benefit the Youth Center. Registration is due by Wednesday, Nov. 20. For more information on the tournament or registration, contact Phil Kent at 503-823-2098 or Beth Faulhaber at 503-256-3479.

Advertise with diversity in *The Portland Observer* call 503.288.0033 or email: ads@portlandobserver.com

BUSINESS *directory*

CANNON'S

RIB EXPRESS

(FORMERLY CHUCK HINTON'S)

Catering & Take-Out
OUR SPECIALTY:
REAL HICKORY SMOKED BAR-B-Q

- Sandwiches • Salads
- Chicken • Pork Ribs
- Beef Ribs

Open 11am-10pm
Monday through Saturday
and 1pm to 8pm Sunday

Fish Sandwich — \$8⁰⁰ FRIDAY & SATURDAY
Fish Dinner — \$10⁰⁰

***** NEW LOCATION *****
5410 N.E. 33RD 503-288-3836

DOUBLE J TIRE CENTER

NEW • USED • NEW CAPS
Taxes, Mounting & Balancing Included
FULLY GUARANTEED

"NOW WITH 2 LOCATIONS"

6841 N.E. M.L.K. JR. BLVD. 4510 S.E. 52ND & HOLGATE
PORTLAND, OREGON 97211 PORTLAND, OR 97206
(503) 283-9437 (503) 771-1834

HOURS - MON. THRU FRI. 9 TO 6 - SAT. 9 TO 4

OFF: (503) 286-1103
FAX: (503) 286-1146

STATE FARM
INSURANCE COMPANIES

HOME OFFICES: BLOOMINGTON, ILLINOIS

ERNEST J. HILL, JR.
Agent

6527 NE MLK, Jr. Boulevard
Suite A
Portland, OR 97217

BOANERGES Group, L.L.C.

- Administrative Services
- Business Management Solutions
- Property Development

Sharon Maxwell-Hendricks
503-331-0597
503-309-8746 cell
503-284-1910 fax

4811 NE GRAND AVE.
PORTLAND, OR 97211

Building your business on a firm foundation

Mark Robb
Corps Secretary

Administration
(503) 493-3925 ext. 11
Fax:
(503) 493-3929
Email:
mark_robbs@usw.salvationarmy.org

5325 N. Williams Avenue • Portland, Oregon 97217

MARCELITTE FAILLA, D.C.

CHIROPRACTIC CARE

Chiropractic Clinic

425 N.W. 18th Avenue, Suite 3
Portland, OR 97209
Phone: (503) 228-6140

FACT: Prices are Lower at GARY OWENS APPLIANCES
148th & NE SANDY

- Washer/Dryer set \$135⁰⁰
- Ranges from \$77⁰⁰
- Refrigerators from \$77⁰⁰
- Stacked W&D from \$199⁰⁰

COMPLETELY REBUILT & SPOTLESS
WITH FULL GARY OWENS GUARANTEE

Same Day Delivery
Open 7 Days 9am-6pm
Major Credit Cards Accepted
Call 503-289-6067 and Save!

AFFORDABLE

JJ LOCK & KEY

FULL LOCKSMITH - SERVICE
RE-KEY AND INSTALL LOCKS
LOCKED OUT? WE MAKE KEYS FROM SCRATCH
HOUSE, OFFICE OR CAR

Two Locations:
Portland 503-284-9582
Oregon City 503-656-2116

Serving Portland/Metro area (N, NE, SE, SW & NW)