

Event Ushers in New Era for Mental Health

Tualatin Valley Centers promote culturally appropriate services

Area residents are invited to celebrate the recent merger of Center for Community Mental Health and Tualatin Valley Centers at an event Wednesday, Aug. 21, from 3 p.m. to 6 p.m. at the center's Concordia clinic at 5010 N.E. 33rd.

The merger provides for continuation of important programs and culturally appropriate services previously offered in the north and northeast Portland community.

Themed "It Takes a Village to Heal a Family," the community event will feature light refreshments and entertainment by the African American Drum Circle.

Representatives from the various programs will be on hand to answer questions and provide information. All community members are welcome.

"We are celebrating our shared vision and mission that preserves and, wherever possible, expands the services of both organizations to reach even further into our community. We are stronger together than either one of us could ever be standing alone," said Mary Monnat, president and chief executive officer, Tualatin Valley Centers.

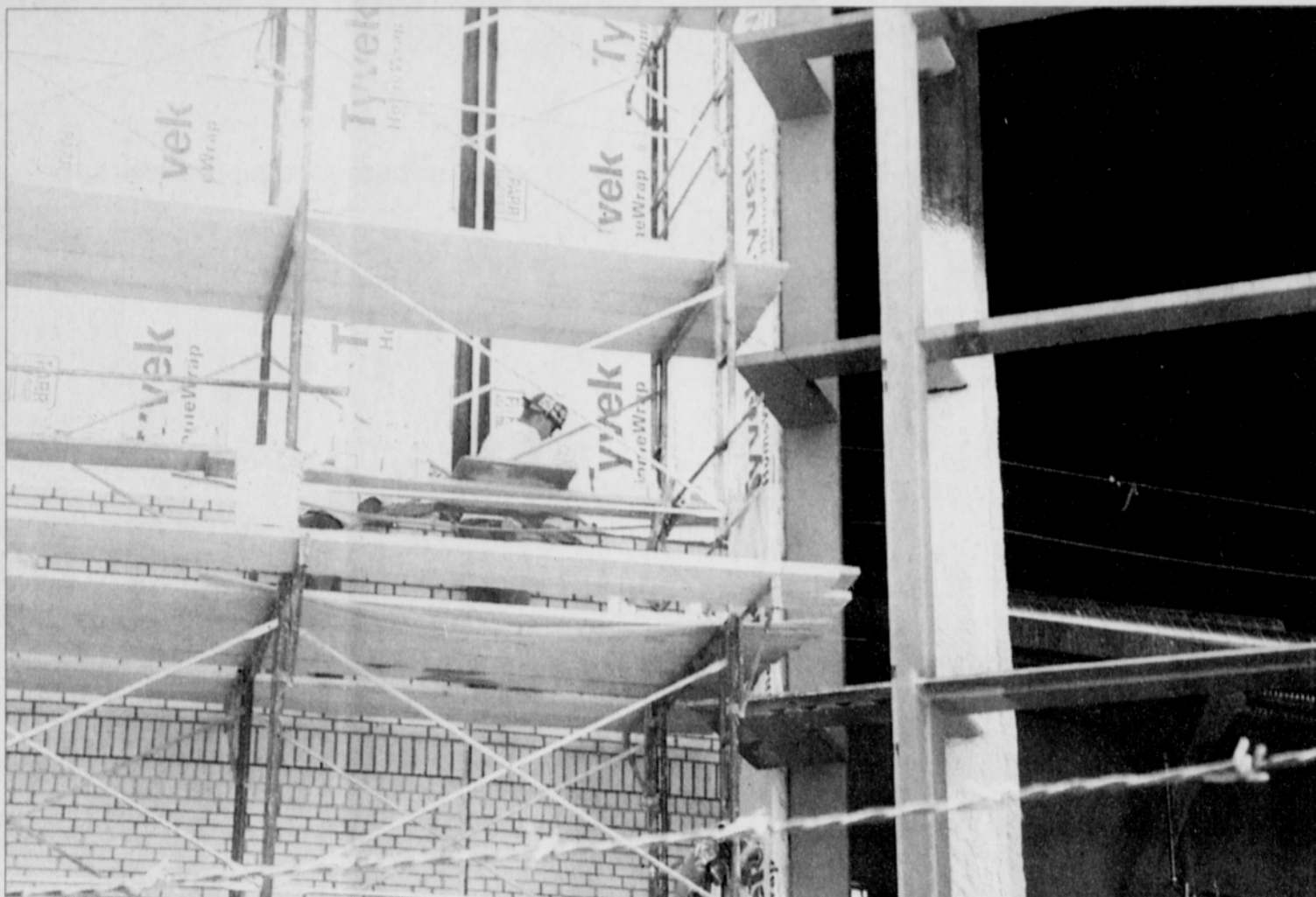
Center for Community Mental Health is a private non-profit

organization, which has provided quality mental health and substance abuse services in north and northeast Portland for 28 years with special commitment to the African-American community.

Founded in 1961 and based in Portland, with clinics and service centers throughout Multnomah, Washington and Clatsop counties, Tualatin Valley Centers is a private non-profit organization, which provides mental health, addiction and prevention services.

In north and northeast Portland, the agency has been providing services at McCoy Academy, Self-Enhancement, Inc., Columbia Villa, James John Elementary School, and the Center for Community Mental Health.

TVC has also been a founding member of CCMH's Leo Ni Leo and African American Gambling Treatment programs. CCMH programs that will continue include Conquest Center for adult mental health services, Project for Community Recovery for adult addiction services, Leo Ni Leo program for African American male youth with addiction and/or mental health issues, and the Nickerson Center for early childhood and adolescent day treatment.



Convention Center Expansion

Workers add exterior elements to the Oregon Convention Center expansion project on Martin Luther King Jr. Boulevard. Glass for a steel atrium skylight and brickwork are being done this month. The project is expected to be 75 percent complete in October and finished in April.

PHOTO BY MARK WASHINGTON/THE PORTLAND OBSERVER

Continuing a Tradition of Excellence

continued ▲ from Front

"None of the players really focus on the talk," Haskins says. "That's all the media hype."

Haskins doesn't take too much credit for the achievements of the Democrats on the court.

"There have always been some really great players (at Jefferson)," he says.

The coach notes past greats like Billy Nickleberry, Gary Ladd and Tony Hopson.

Aaron Miles, Michael Lee and Brandon Lincoln are the most recent Jefferson players to earn Division 1 status in their college careers.

"I'm kind of like the straw that stirred the drink," he says.

Haskins was a point guard through his own playing days.

"A point guard is like a coach, the leader of the team," Haskins explains. "Playing the game, you always have to keep your cool, and when you're not cool, it's on purpose."

Haskins' success from the sidelines has encouraged some of those around him to consider a career in coaching. His advice for young hopefuls is concise.

"It's several things to make a good coach," Haskins says. "Managing players, gaining respect and developing players into better men,

on and off the court. Become a student of the game. Watch it from a coach's perspective. When somebody shoots, don't look to see if he makes it, watch how he shot the ball."

Northeast Portland native Brandon Brooks was present at the recent tournament. He just signed with the University of Southern California in Los Angeles and came by the gym to watch the feverish summer play and chat with his former coach.

A great player all through high school, Brooks says he's ready for some top-level, college ball.

"It feels good to play for a major university," Brooks says.

The college freshman says he's looking forward to competing against Oregon and Oregon State in the Pac 10 conference, "whoever is suppose to be the best."

The road to a basketball career in school was never easy, but Brooks says he has always remained focused.

"You have to earn respect first," he says. "Respect means that everybody is looking out for you when you're on the court."

Brooks also had some advice for kids at the tournament that were hoping to improve their game.

"Hoop as much as you can, get good grades, and go to Jefferson."

Lombard Intersection Closes for Max

North Lombard will be closed this weekend at Interstate Avenue for construction of the Max light rail line.

The closure will allow crews to lay Interstate MAX tracks across the busy intersection. Lombard will be closed at 7 p.m. Friday, Aug. 16 and will reopen before the Monday morning commute.

During the closure, one north-

bound and one southbound lane of traffic will remain open on Interstate Avenue. Traffic on Lombard will be detoured around the intersection.

Bus lines 4-Fessenden, 8-NE 15th Ave and 75-39th Ave/Lombard will also be redirected during the closure.

Construction on the 5.8-mile Interstate MAX extension is now 65 percent complete.

The Korean American Grocers Association of Oregon

Boston Market
726 NE Killingsworth
503-282-6776

Killingsworth Food Mart
1616 NE Killingsworth
503-281-2154

Knott St. Grocery
2709 NE 7th
503-284-7490

Cullen's Corner
4938 N Albina
503-287-0542

Ainsworth Market
5949 NE 30th
503-281-0479

Prescott Corner Market
1460 NE Prescott
503-284-7418

K C Food Market
309 N Killingsworth
503-289-7430

Union Market
3837 NE MLK Jr. Blvd.
503-284-6511

Alberta Street Market
915 NE Alberta
503-281-6388

**We Appreciate Your Business
and Support Thank you**