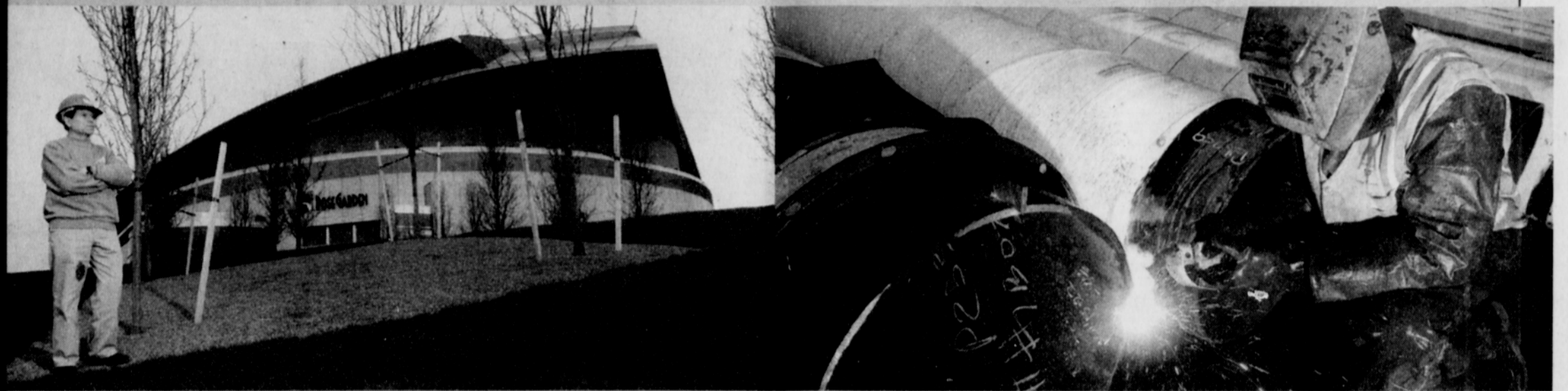


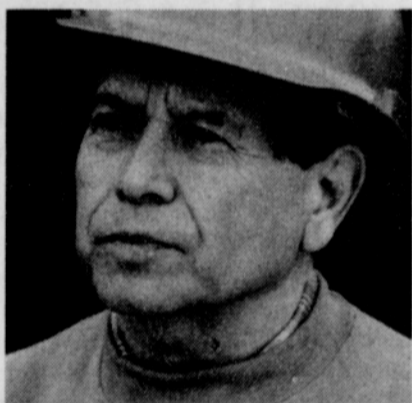
Profile of Community Partners



BUILDING WITH LOCAL RESOURCES

Bruce Watts, local activist, executive director of the Coalition of Black Men and Tri-Met manager, has one mission in his work—to make sure local businesses and workers help build Interstate MAX. Through his efforts, Tri-Met's Disadvantaged Business Enterprise (DBE) program has sought ways to do this from the very beginning of the project. And, it's working. More than \$6 million in contracted work on the project is going to Portland subcontractors, and \$3 million to businesses in North and Northeast Portland. For example: if you drive along Interstate Ave., chances are you'll see Rudy Trujillo from Island Landscape or Leo Burrell from A Quality Weldor two local businesses putting their mark on the light rail line.

ISLAND LANDSCAPE
2723 N. HAYDEN ISLAND DR.
503-289-6010
HOURS: 7:30 A.M.-4:30 P.M., MON.-FRI.



Rudy Trujillo

It may have been Rudy Trujillo's childhood that caused him to purchase Island Landscape, located in North Portland. At nine years old, Rudy remembers planting an orchid with his father on their small Idaho farm. Tenderly caring for the flower, Rudy learned from his father how to nurture mother earth.

Surrounded by forests, lush assorted flowerbeds and a packed vegetable garden, their farm also grew Rudy's future. Rudy would joyfully bring unique foliage to school for show-and-tell, sharing his plants with his classmates, and sowing the seeds for a young man's career.

FROM CHILDHOOD GARDENER TO LANDSCAPE PROFESSIONAL

"At some point I thought this would be a great career. I wanted to work with plants and at the same time help the environment. Plants improve air quality and help humans breathe," he said of his industry.

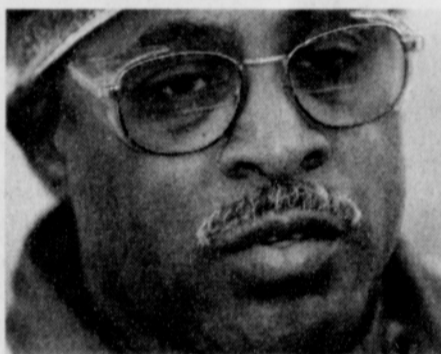
In gardening, as in life, it requires effort and passion. He moved to Oregon in 1974, gaining experience doing landscape, design and installation work. In 1985, he had the opportunity to buy Island Landscape.

Today, he owns the company providing landscape services for Interstate MAX construction. Rudy's company will add greenery and beauty along Interstate Ave. by restoring landscape between the Killingsworth and Portland Blvd. MAX station areas.

"Our motto is 'we're only as good as our last job.' We're busy because we deliver quality work," he said.

In other parts of the city, Island Landscape projects include the Riverplace Promenade, restoration for the Edgewater Clubhouse and an upcoming effort providing benches and planters for the Brewery Blocks downtown.

A QUALITY WELDOR
2026 SE 130TH AVE.
503-261-8166
HOURS: 7:30 A.M.-5:00 P.M., MON.-FRI.



Leo Burrell

Quality workmanship and deep moral principles have laid the path from an unsure future to great opportunities—and success—as a portable welder subcontracting on the Interstate MAX light rail project.

LEARNING FROM MOM

For Leo Burrell, owner of A Quality Weldor, tough times growing up in Maryland served as an incubator for Leo's future success, both as a businessman and as a father. With public assistance, Leo's mother somehow managed to put food on the table, teaching each of her six children how to prepare and stretch a meal. "It was important to me that I learn to cook, clean and provide for my family. I want to be a good father and husband," Leo says.

Leo recalls being chided by his siblings for almost everything. "I felt like I lived the Cinderella fairytale. At home and in school I could never do anything right." As a result, he became a perfectionist, working diligently to master anything he did and to seek self-satisfaction.

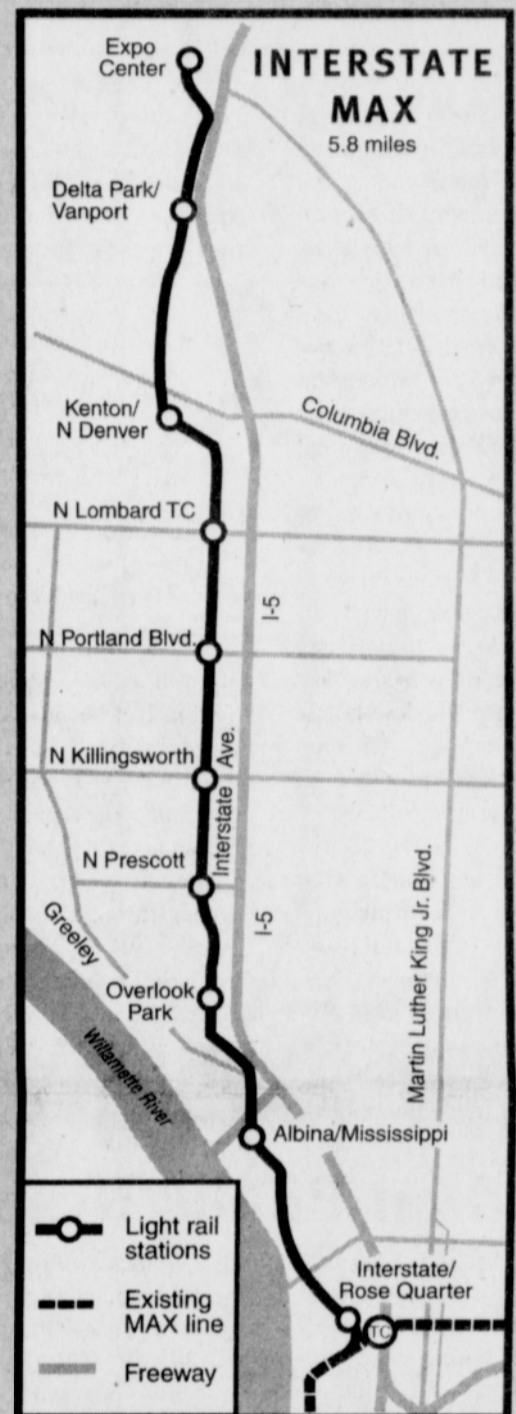
PERFECTING HIS CRAFT

When Leo began welding 34 years ago, he strove to master his craft. First he honed his welding experience while working for construction companies. He believes his work is an art form, like painting. "I work hard to make sure when I weld something together it is aesthetically pleasing. But I also strive to make sure the fusion is clean, without impurities weakening the weld."

He credits the formation of his business, two years ago, to his no-nonsense wife Linda, who pointed out a moral imperative. "My objective was to produce quality work. Yet, from my observations the industry placed a high priority on productivity, thereby inadvertently diminishing quality. And that's why I started A Quality Weldor," he said.

For Leo Burrell, success comes not only from producing quality work, but also from his faith. "Everything I do is based on my relationship with my Creator. I provide a service as though it is being done for my God."

A Quality Weldor welcomes both residential and commercial projects. Leo's work has included welding projects on the Scholls Ferry Mall, shopping center repairs in Lake Oswego, residential remodeling and now on the Interstate MAX project.



- 5.8 miles long
- 10 stations
- \$350 million budget
- MAX will bring faster, more reliable transit to North and Northeast Portland residents.

For project information call 503-962-2155

in english: www.tri-met.org

en español: www.tri-met.org/yellowline/espanol.htm



How we get there matters.