

METRO *Life*

The Portland Observer

SECTION B

"Bridging Portland's Communities"

Community Calendar

Job Opportunity Fair Thursday

The Oregon State Employment Department, 30 N. Webster St., will hold a Job Opportunity Fair, Thursday, Nov. 1, from 10 a.m. - 1 p.m. Job seekers are encouraged to attend this free event.

Feminist Response to War and Terrorism

Radical Women hosts a round-table discussion encompassing many of the questions generated by the events of Sept. 11 and the U.S. government's subsequent bombing of Afghanistan. The event will be held on Wednesday, Nov. 14, 7 p.m., at the Bread and Roses Center, located at 819 N. Killingsworth in Portland. A buffet is included. Call 503-240-4462.

Thanksgiving Dinner

Brothers on the Move will be having their 4th annual Thanksgiving Dinner on Saturday, Nov. 17, from 11 a.m. - 3:30 p.m. Free rides are available for the dinner. Everyone is invited to attend at the Cornerstone Community C.O.G.I.C., located at 2216 NE. Killingsworth St. Call 503-281-4587.

Connect Your Disconnected Life

Legacy Women's Services still has openings available for their annual women's retreat that is on Saturday, Nov. 3, from 9 a.m. - noon at the Legacy Emanuel Hospital & Health Center, located at 2801 N. Gantenbein Ave. Women will learn a new approach for keeping their life in balance with the Connection Solution. Call 503-413-4840.

Barnes & Noble at Lloyd Center

Barnes & Noble, Inc., the nation's largest bookseller, will relocate its northeast Portland store to a newly expanded superstore at 1317 Lloyd Center, in the Lloyd Center on Nov. 7. The public is invited to a preview night on Tuesday, Nov. 6, from 6-9 p.m.

Love and Logic

On Nov. 8, Dr. Charles Fay will be presenting a talk entitled "Success with Angry and Aggressive Youth" at the Portland Conference Center in Portland. He is the co-author of "Love and Logic Magic: When Kids Leave You Speechless." Call 1-800-LUV-LOGIC.

Volunteers Needed

Cares Northwest is a medical child abuse assessment center. The program sees over 1500 children each year for concerns of sexual abuse, physical abuse, emotional abuse, neglect and exposure to domestic violence. The center is in need of volunteers, primarily from Monday through Friday. Spanish-speaking volunteers are needed on Thursdays and Fridays. Call Debby Kernen at 503-331-2400 for more information.

St. Charles Spaghetti Dinner

The St. Charles Church, located at NE. 42nd and Emerson will be having their 51st Annual St. Charles Spaghetti and Meatball Dinner on Sunday, Nov. 4, from Noon - 6:30 p.m. Take-outs are available.

Weatherization Workshop

Don't let your heating bills take you hostage. Take action! Weatherize! Come to a workshop and learn how to save energy through material installation, behavioral changes and simple maintenance around your home. The next workshop will be held at the Woodstock Community Center, located at 5905 SE. 43rd Ave. on Thursday, Nov. 1, from 6-8 p.m. Call 503-284-6827.

Workers Share Day With Kids



Local construction workers deliver a load of toys to young children from Albina Head Start.

PHOTO BY MARK WASHINGTON/THE PORTLAND OBSERVER

Heavy equipment operators from Local 701 of the International Union of Operating Engineers took on a highly unusual job assignment Friday.

Instead of working with the tons of rock, earth and steel they usually see on construction sites, they hauled cargo like never before - a delivery of toys to children at the Albina Head Start Program.

The kids cheered as a massive front loader tractor carried brightly wrapped

toy construction sets to the Head Start playground at the Community Lutheran Center at Northeast Skidmore and Martin Luther King Jr. Boulevard.

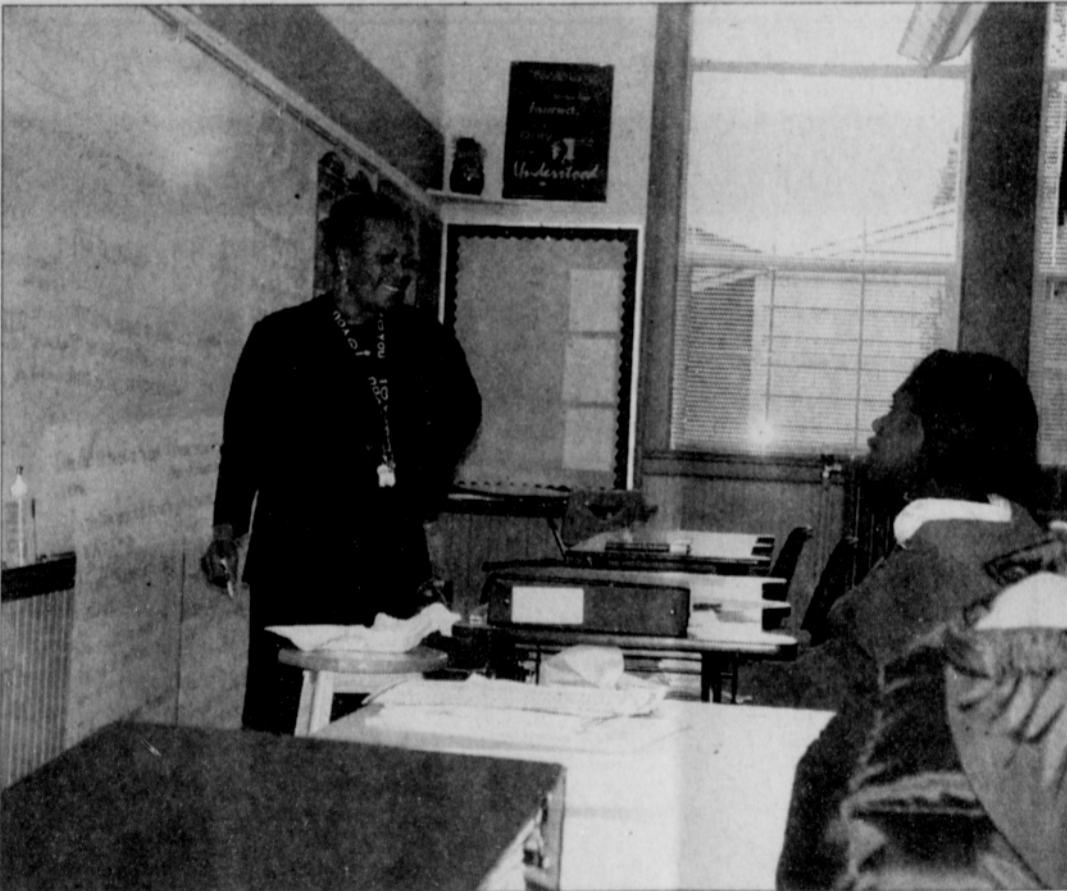
"The children have been learning about the important work of the operating engineers and their role helping to build our communities," said Hilda De La Garza, assistant educational coordinator for Head Start. "They see the big construction projects going around them and this is a chance to meet the people who perform

that work.

Operating engineers have been busy working on major high profile construction projects in inner north and northeast Portland, such as the expansion of the Oregon Convention Center and Interstate Max Light Rail.

"Local 701 is so proud to share our profession and of course these toy construction sets with the great kids at Albina Head Start," said Mark Holliday, business manager for the union.

Tuition-free School Opens to Applicants



Lela Triplett-Roberts teaches a class at St. Andrew Nativity School, a new middle school that opened this fall in northeast Portland, serving low-income students who work hard in a highly structured environment. Roberts is a former principal at nearby Jefferson High School.

PHOTO BY MARK WASHINGTON/THE PORTLAND OBSERVER

St. Andrew Nativity School, northeast Portland's new tuition-free Catholic middle school, will hold an open house for families of potential students on Saturday, Nov. 3 from 1 to 4 p.m.

The Jesuit school is one of 40 nativity schools currently operating in the United States, but the only one in the Pacific Northwest.

St. Andrew provides tuition-free private middle school education to students who qualify for the Federal Free

and Reduce Price Lunch Program and who are willing to work very hard in a highly structured school environment.

The mission is to prepare middle school students from low-income families for success in college prep high schools and beyond, school officials said.

The school runs from 8 a.m. to 6:30 p.m. Monday through Thursday and until 4:30 p.m. on Fridays. Weekend activities and participation in a summer program are also required.

Applicants should currently be in the fifth grade and from a family able to demonstrate economic need. Both boys and girls may apply. Students need not be Catholic or residents of northeast Portland. Students currently enrolled in Catholic schools cannot be considered for application. The school is located at 4925 N.E. 9th, near the corner of Ninth and Alberta. For more information, contact the school's principal, Father Kevin Connell at 503-335-9600, extension 11.

Public Transit Grows with New Services, Security



New light rail route to the airport has pushed Tri-Met ridership to record highs.

Ridership is exceeding expectations on northeast Portland's new light rail service to the airport, and all Max trains now have security cameras on board, Tri-Met officials announced in two recent developments.

Since the airport Red Line opened on Sept. 10, Airport Max has averaged 3,400 weekday boardings between Gateway Transit Center and the airport station. Another 7,300 riders pick up the airport train between downtown Portland and Gateway.

"The strong Airport Max ridership figures show that people are finding it a convenient alternative to get to the airport," said Tri-Met General Manager Fred Hansen. "Because of the Red Line, we're also seeing that more people are choosing transit."

In September, Tri-Met broke all previous ridership records in several areas.

Max reached 80,200 average weekday rides during the period, a 19 percent increase over last year. And by combining both Max and bus service, the weekday ridership figure was 293,300 rides, a 6 percent increase over a year ago.

Overall, average weekly ridership has reached 1.76 million, a 7.7 percent increase over last year.

LIFT, which provides door-to-door service for people with disabilities and others unable to use MAX and buses, posted a 6.3 percent daily ridership increase from September last year.

Weekend rides were up 14 percent from last year.

Security cameras are now rolling on all Max trains as part of Tri-Met's ongoing effort to deter crime on transit vehicles and properties.

"Security cameras enhance Tri-Met's overall enforcement efforts in two ways," said Captain Mike Garvey, who heads the Tri-Met Police Division of the Portland Police Bureau. "They are a deterrent to crime and the images can be used as evidence in criminal prosecutions."

Nearly half of all Tri-Met's buses also carry security cameras.

Three hundred buses have three cameras covering the interior of the bus and the newest buses have a fourth camera aimed out the windshield.

In evenings and at nighttime, about 80 percent of the buses in service have cameras running, Tri-Met officials said.

Security cameras are also located at some transit centers, Max stations and other Tri-Met properties, with more cameras to be installed during the next 12 months.