

# Football, Weekend Events Pay Tribute to Vanport

What do you get when you combine the pioneering spirit of the Northwest with the spice and soul of the South?

A flavorful weekend of food, fun and football.

This weekend will honor the fighting spirit of Vanport, a community comprised of many African Americans that was located north of Columbia Boulevard and was lost in a flood in 1948.

The first annual Vanport Football Classic culminates in an exciting gridiron battle between two nationally ranked teams.

The game will kickoff Saturday at 6 p.m. at PGE Park, featuring Tim Walsh and his Portland State Vikings vs. the Grambling State Tigers and their coach, Doug Williams, SuperBowl XXII MVP. I

The world famous Grambling State Marching Band will entertain the crowd throughout the game, including an exceptional half time performance.

Performing at Super Bowls and appearing on national commercials, spectators will see why the Grambling State Marching Band has captured the hearts and souls of people around the world.

Area residents can also spice up their noon hour Friday when the "baddest band in the land" holds a preview performance and pep rally at Pioneer Courthouse Square, downtown.

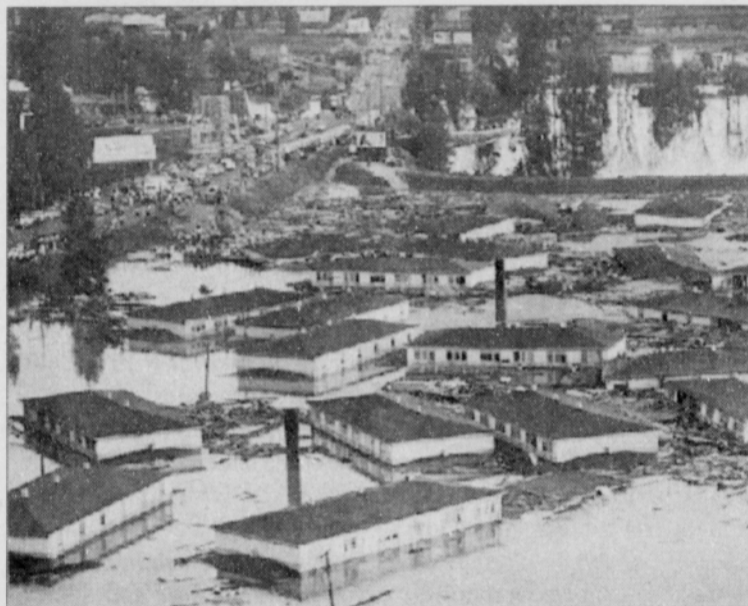
The band will also perform in northeast Portland on Saturday from 9 a.m. to 10 a.m., starting

a march from the Youth Opportunity Center, 3034 N.E. Martin Luther King Jr. Blvd. and continuing to Irving Park, a few blocks away.

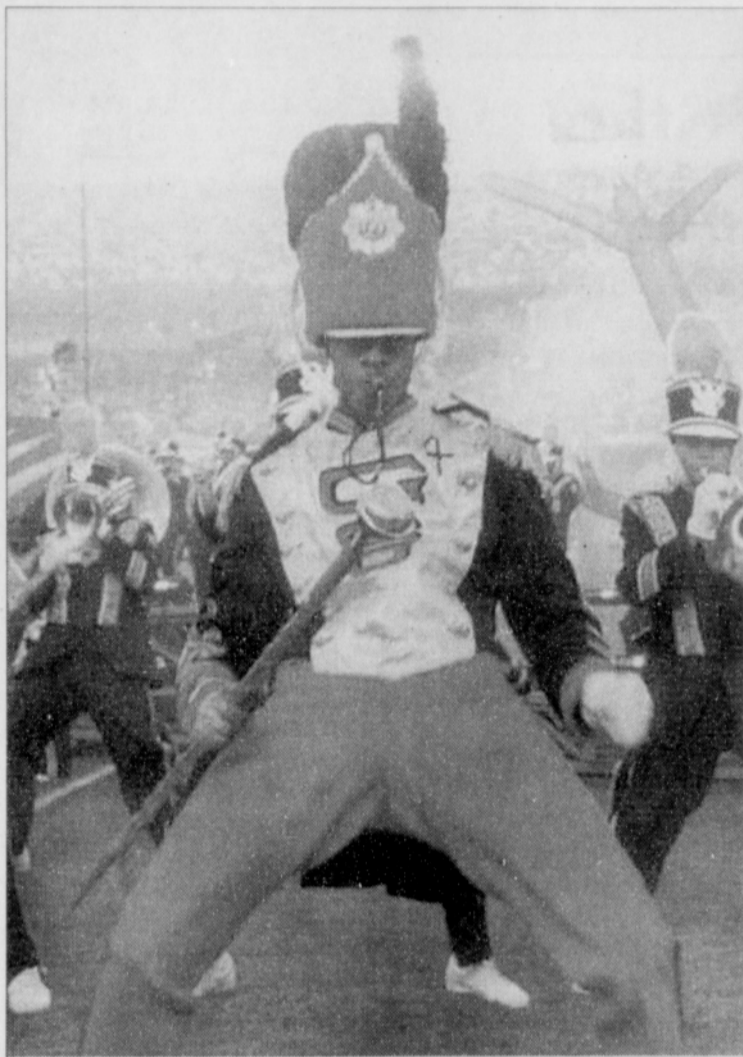
Portland State officials hope the classic and all its activities

will begin a new tradition of spicy, soulful Septembers celebrating history, diversity and football.

Another pre-game celebration takes place Friday at 7 p.m. at the Portland Expo Center in



In 1948, the great city of Vanport and all it offered was washed away in the flood of 1948, the legacy of Vanport College lives on today in Portland State University. And although the mix of cultures challenged the regions prejudices in the 1940s, Vanport City helped to create the roots of diversity the city of Portland now celebrates.



north Portland. Musical guests and entertainment combined with step performances will create an energy packed evening celebrating the true spirit of community and diversity.

A Vanport Memorial Banquet will be held Thursday at 7 p.m. at the Oregon Convention Center Grand Ballroom.

The banquet will honor the contributions of the citizens of Vanport City as well as the origins of Portland State University.

Honored guests will include Vanport survivors and local civil leaders.

The world famous Grambling State Marching Band, left, will perform Friday at noon at Pioneer Courthouse Square and during the first annual Vanport Football Classic at 6 p.m. Saturday featuring the Grambling State Tigers and Portland State University Vikings.



*Vanport City, built on the flood plains of the Columbia River Slough, provided more than jobs to thousands of wartime laborers working in the local shipyards. Vanport offered many the opportunity to leave the poverty and inequities of the South to pursue a better life in the Northwest. In addition, Vanport was also a huge social experiment with its own fire department, libraries, police and schools, including Vanport College.*

1st Annual  
**VANPORT**  
FOOTBALL CLASSIC  
September 20 - 22, 2001

Portland State Vikings  
vs.  
Grambling State Tigers  
Sept. 22, 2001 • PGE Park • 6pm

*Half time Entertainment*  
Featuring the WORLD FAMOUS  
Grambling State Marching Band

For game tickets: 1-888-VIK-TIKS  
Adults: \$24.50 • Youth \$15.75

VFC proceeds to benefit the United Negro College Fund

## Right Address Needed for Kicker Check

The Oregon Dept. of Revenue wants to make sure that this year's kicker checks get to Oregon taxpayers in plenty of time for the holidays. In 1999, over 15,000 taxpayers had their checks delayed because of incorrect mailing addresses.

"Taxpayers who have moved since filing their 2000 returns need to give us updated addresses. We'd like to know about the name changes, too," said Dandy Bradley, the department's kicker project manager.

Taxpayers may send their changes of address to Address Change, Department of Revenue, PO Box 14600, Salem OR 97309-5049. They should include their Social security numbers and in the case of joint returns, indicate if the address change is for both parties.

They may also change addresses by calling 1-800-356-4222. Spanish speakers may call 503-945-8618.

The surplus checks, commonly known as the kicker, are tax refunds the state sends to individuals when tax collections exceed official estimates by 2 percent or more.

The refunds are scheduled for mailing by Dec. 1.

**SAFeway**  
FOOD & DRUG

**Attention SENIORS**

**NEW FOR SENIORS ONLY... Safeway Senior Shuttle Service!**

Introducing a great new service for our neighborhood senior citizens. FREE grocery shopping "shuttle service" to your nearby Ainsworth & MLK Blvd Safeway Food & Drug and Renaissance Market. TWICE a Month! On or around the 3rd and 15th of each month. This Service is FREE to seniors age 60 and over. *Please Seniors - Grandchildren and adults WILL NOT BE PERMITTED on the Shuttle or any time.*

LOOK FOR OUR SPECIAL "RAZ TRANSPORTATION" TROLLEY SERVICE SCHEDULE FLYER AT YOUR NEARBY SAFEWAY and RENAISSANCE MARKET FOR COMPLETE DETAILS!

Sponsored by:  
SAFeway FOOD & DRUG  
Renaissance Market  
AFRICAN AMERICAN CHAMBER OF COMMERCE OF OREGON

For More Information Call: 503-572-0812

Visit Safeway's Web site at [www.safeway.com](http://www.safeway.com)

Available at Safeway: WESTERN MONEY TRANSFER

PRICES EFFECTIVE SEPTEMBER 2001						
Sun	Mon	Tue	Wed	Thur	Fri	Sat
			19	20	21	22
23	24	25				

Items & prices in this ad are available at your local Safeway store. No sales to dealers, restaurants or institutions. Sales in small quantities only. Quantities of some items may be limited and subject to availability. Not responsible for typographical or graphical errors. We reserve the right to correct all printed errors. Buy One Get One Free pricing determined by equal or lesser value of the item. The lower priced item is then free. ©2001 Safeway Stores, Inc.

# GIVING OUR BEST.

**Beef T-Bone Steak**

Valu Pack of 4-lbs. or more. Broil or Barbecue. **SAVE up to \$3.00 lb.**

**3<sup>99</sup>** lb.

Safeway Club Price

**Assorted Pork Chops**

Mixed Steaks and Chops. **SAVE up to \$1.20 lb.**

**1<sup>59</sup>** lb.

Safeway Club Price

**Safeway Vegetables**

14 to 15.25-oz. Canned. Selected Corn, Green Beans, Sweet Peas or Spinach. **SAVE up to \$1.67 on 3**

**3 for \$1**

Safeway Club Price

**Sweet Ripe Cantaloupes**

Grown in California. **SAVE up to 41¢ lb.**

**28¢** lb.

Safeway Club Price

Now the savings are in the Card!

ALL LIMITS ARE PER HOUSEHOLD PER DAY!