



Health/Education

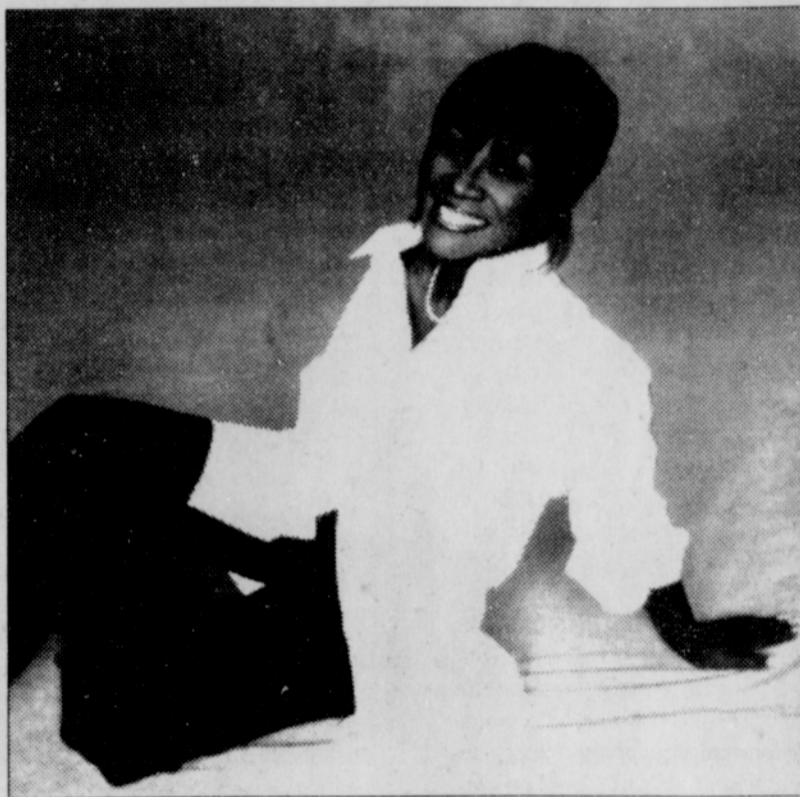
Labelle Visit to Put Spotlight on Women's Health

Singer and entertainer Patti Labelle will join national and local medical specialists in Portland next week to address the common myths and concerns about menopause.

Vitality: Health and Wellness for Midlife and Beyond, a national menopause education campaign, are free programs, sponsored by Legacy Women's Services, and open to women interested in getting the facts on menopause and other midlife health issues.

Labelle will share her experience with menopause and hormone replacement therapy, and encourage women to take an active role in their health. She and the physician panel will devote most of the time to answering the audience's questions.

Two sessions are scheduled



Singer and entertainer Patti Labelle will be in Portland next week to share her experience with menopause and hormone replacement therapy and encourage women to take an active role in their health.


on Tuesday, June 12.

The first meeting is from 10 a.m. to 11:30 a.m. at Legacy Meridian Park Hospital, Education Center Auditorium, 19300 S.W. 65 Ave. in Tualatin; and the second session is from 7 p.m. to 8:30 p.m. at Legacy Emanuel Hospital and Health Center, Medical Office Building Atrium, 501 N. Graham St.

Pre-registration is required as seating is limited. To register, call 503-413-4840.

Joining Labelle will be Dr. Donnica Moore, a nationally known women's health expert; Dr. Elizabeth Newhall, obstetrics, a specialist in gynecology and surgery at Every Women's Health in Portland; and Dr. Patricia Krabbendam, a specialist in obstetrics and gynecology at women's Healthcare Associates in Tualatin.

The weekend is what you make of it.



A weekend escape is closer than you think. In fact, you'll find it at the luxurious Radisson Hotel Seattle Airport. Centrally located between Seattle and Tacoma, you can unwind in the garden courtyard with a heated pool, melt away stress in the sauna, and even savor fresh seafood at North by Northwest. Go ahead, make it a weekend to remember. Join Gold Rewards. Free Nights. Global Rewards.

Radisson

SEATTLE
Radisson Hotel Seattle Airport
17001 International Blvd., Seattle, WA 98188
206-244-6000 • Fax 206-246-6835
www.radisson.com/seattlewa
1-800-333-3333 or contact your travel professional
*Based on availability. Must mention this ad at time of reservation. Good through 12/31/01.

Schools Upgrade for Earthquake Dangers

In response to a recent news release by the Oregon Department of Geology and Mineral Industries stating that the Portland Hills Fault is active and capable of generating a large earthquake, Portland Public Schools released a report on the status of district schools that may be on or near the fault line.

"The district has been tak-

ing action for the past several years to upgrade our schools to better withstand an earthquake," said Facilities and Asset Management Director Pam Brown. Since 1996, Portland Public Schools has spent more than \$60 million from bond funds for seismic upgrades. The upgrades, which are designed to provide safe exiting for all occupants in

schools, are scheduled to be completed in 2003.

"Our schools also have been holding earthquake drills for the last three years," said

Deputy Superintendent Pat Burk. "The safety of our students and staff is our top priority." For more information, call Brown at 503-916-3403.

GET A SUMMER YOUTH PASS FOR YOUR SUMMER SURVIVAL KIT



**HEAD START
PRESCHOOL
IS
ACCEPTING APPLICATIONS
FOR
FALL**

*Children must be 3 1/2 or 4 years old
BY SEPTEMBER 1ST*

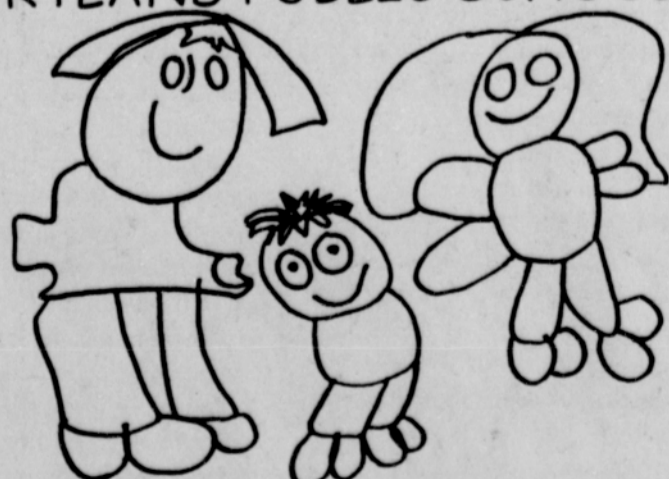
*Serving:
North
Northeast
Southeast*

Within the Portland Public School Boundaries

**CALL TODAY FOR AN APPLICATION
AND MORE INFORMATION**

503 916-5724

PORTLAND PUBLIC SCHOOLS



HEAD START COMMUNITY

**OUTWIT
SUMMER
BOREDOM!**

If you're 18 or younger, get unlimited rides on Tri-Met with a summer youth pass. Go now—summer won't last!

TWO WAYS TO SURVIVE

Choose the Ultimate Summer Youth Pass for just \$46

• one pass good June through August • great deal • no hassles

Or, Get A Monthly Summer Youth Pass For Just \$16

• price good for June, July and August passes only

Purchase your Summer Youth Pass at the usual Tri-Met outlets, including Fred Meyer, Safeway and most Albertson's stores.

SHOW THIS PASS FOR GREAT DEALS AT: How we get there matters.



503-238-RIDE

www.tri-met.org