

# A Film Festival in Portland For All Excitement Junkies

Paragliding in the shadow of Nepal's Annapurna Range, skiing bottomless powder in Whis-

unknown and sometimes hostile territory. The selections of this year's films include films from Canada, the United States,

Germany, England, Switzerland and Croatia.

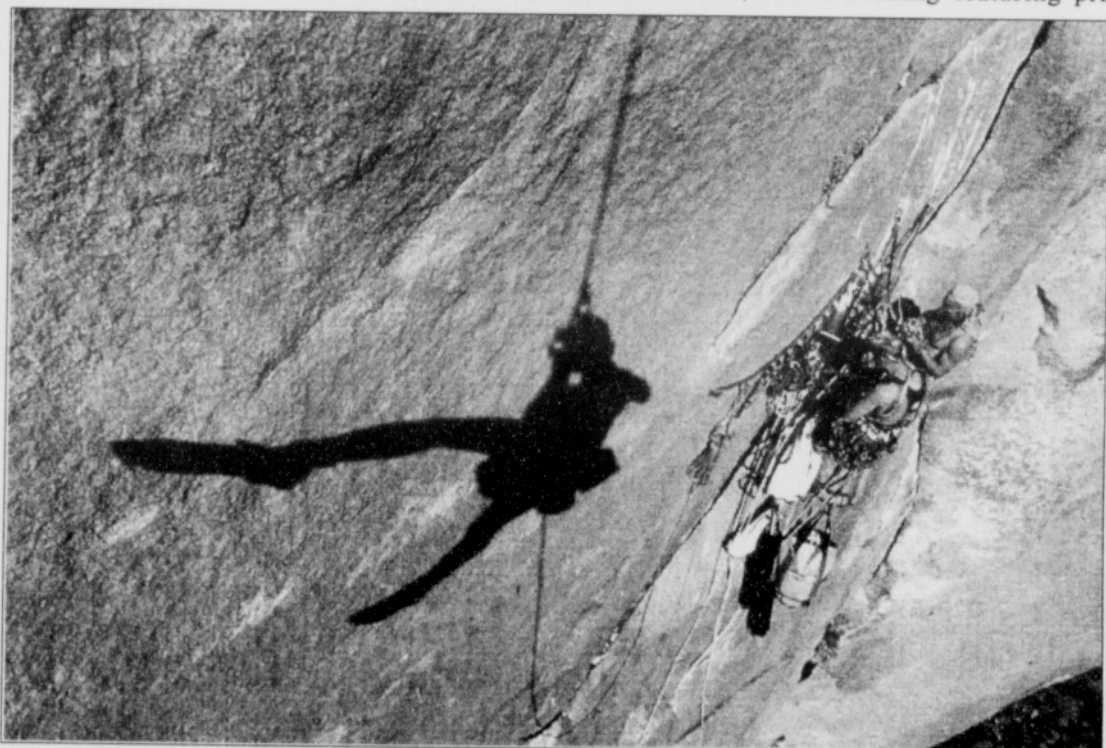
A drawing will also be held each evening featuring prizes

provided by sponsors of the film festival. Among those donating prizes will be Eagle Creek Travel Gear, REI, Sector Sport Watches, Sierra Designs, Salomon Footwear, National Geographic and Powerbar. Recipients must be present in the audience to win.

The Aladdin Theater is located at 3017 SE. Milwaukie in Portland. The theater sells food

and beverages, which are available for consumption during the movies. Doors will open at 6:30 p.m. with movies to begin at 7 p.m.

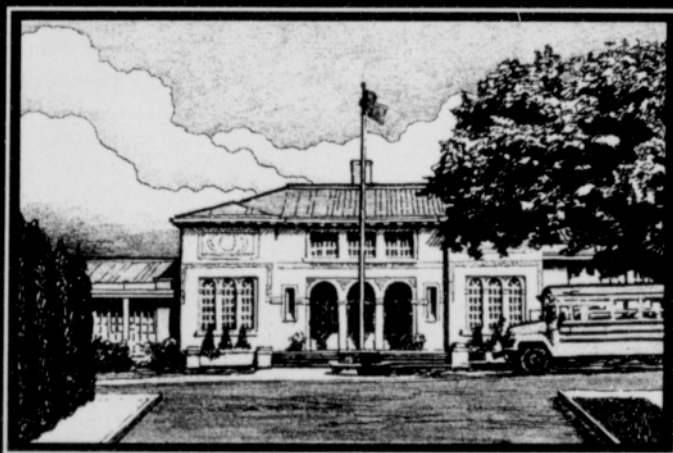
For more information on the film festival, call the Tualatin REI at 503/624-8600, Portland REI at 503/283-1300 or the Recreational Equipment Inc., at 360/693-0209.



ler, British Columbia, and scaling El Capitan in Yosemite - just a few of the sights guaranteed to thrill and inspire audiences when the 25<sup>th</sup> Annual Banff Mountain Film Festival World Tour hits Portland, April 24 - 26. The film festival is sponsored locally by Recreational Equipment Inc. (REI) as a fundraiser for Adventures Without Limits, a non-profit organization dedicated to providing outdoor recreation experiences for people of varied abilities. The event will be held at the Aladdin Theater, located at 3017 SE. Milwaukie, at 7 p.m. each night.

The 25<sup>th</sup> Annual 2000 - 2001 World Tour Program will include past winners from the festival including '89 winner "Solitary Journey" where Sherpa Dawa Tenzing and Lord John Hunt recall their experiences on the famed '53 Everest Expedition. Taking the Grand Prize at Banff this year was "Mysterious Mamberamo." This fascinating film chronicles a difficult and dangerous adventure into

**KENNEDY SCHOOL**  
McMenamins



**CLASS BEGINS WITH  
A HEARTY BREAKFAST**

Monday through Saturday: 7am to 10:30am

Sunday: 7am to 11:30am

5736 NE 33rd · Portland, Oregon  
(503) 249-3983 · [www.mcmenamins.com](http://www.mcmenamins.com)

**"Don't let summer sneak up on you. Join Weight Watchers now."**

Now's the time. And new Winning Points is the way. Eat the foods you love, stay within your daily POINTS<sup>®</sup> range, and **NEW** lose! You'll stay satisfied and be ready for your best summer ever.



**FREE FIRST MEETING\*!**

Join before May 5th and **SAVE \$12.00!**

Pay only the registration fee of \$20.00

Join any meeting anytime! For more information call weekdays 8:30 am to 5:00 pm

**(503) 297-1021**

(or toll free 1-877-297-1021)

[www.weightwatchers.com](http://www.weightwatchers.com)

\*Subsequent Weekly fees (\$12.00) apply.

Valid at participating locations for a limited time.

©2001 Weight Watchers International, Inc. owner of the WEIGHT WATCHERS trademarks. All rights reserved.

### North Portland

Northminster Pres. Church

2823 N. Portland Blvd.

Wed. Downstairs 4:45 P.M.

Legacy Emanuel Prof. Office Bldg.

2800 N. Vancouver Suite 105

Mon. 12:00 noon

### Northeast Portland

Tillamook Park Building

2108 N.E. 41 St. Ave.

Mon. 7:00 P.M.

Tue. 7:00 P.M.

Wed. 9:30 A.M. - 12:00\* 5:00 P.M. 7:00 P.M.\*

Thur. 9:30 A.M.\* 5:00 P.M.\* 7:00 P.M.\*

Fri. 9:30 A.M.

Sat. 9:30 A.M. \*

Temple Baptist Church

1319 N.E. 7th

Tue. Fireside Room 12:00 noon

Timberline Dodge

2510 N.E. Sandy Blvd.

Thur. Conference Room 12:00 noon