



Business



BLACK HISTORY MONTH

Tri-Met Adds Online Trip Planning to Website Newest feature makes riding transit even easier

Tri-Met just made planning a transit trip as easy as typing www.tri-met.org on a computer and clicking on its new online Trip Planner.

Any computer with Internet access can now create custom transit trips. It will soon be available in Spanish, too.

"The Trip Planner makes riding Tri-Met easier than ever," said Fred Hansen, Tri-Met General Manager. "The most requested Tri-Met information is now available anytime, anywhere you have a computer with web access." Filling out the online Trip Planner is simple - just enter this information: Your starting point - either by address, intersection or landmark; where you want to go - by address, intersection or landmark; when you either want to leave or arrive; and whether to list options by the quickest time, fewest transfers or shortest walk. Once entered, the program gives several trip options and instructions, including directions to the nearest bus stop or MAX station;

when you need to board; where to transfer or get off; and walking distances and directions, fares and times.

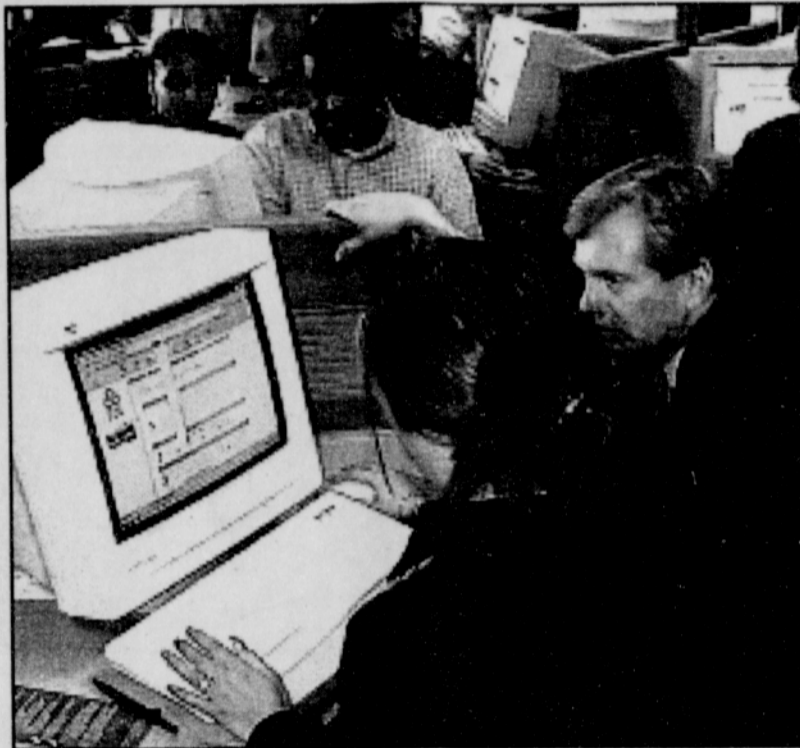
For example, someone at NE One Stop Career Center on NE Martin Luther King Jr Blvd heading to Swan Island for a job interview or work could get this information:

Walk west to Williams & Morris; board 4-Fessenden to St. Johns - get off at Albina &

Killingsworth; board 72-Killingsworth/82nd Ave to Swan Island; travel time: 35 mins., including 10mins. walking and 10mins. waiting.

If you use a palm computer, Tri-Met route and schedule information can be downloaded, storing every MAX and bus schedule right in the palm of your hand.

Tri-Met created the online Trip Planner because it is the most requested information at its website, which gets over 100,000 visits a month. People wanting help planning rides can still call 503-238-RIDE on weekdays between 7:30 a.m. and 5:30 p.m.



Tri-Met General Manager Fred Hansen helps Kim Filla with the agency's new online Trip Planner. Tri-Met unveiled its new service at the NE One Stop Career Center in Portland.

County Environmental Services Has New Mission

The Board of County Commissioners has voted unanimously to reorganize and change the mission of the County's Department of Environmental Services. The newly named Department of Sustainable Community Development will take a leadership role in developing and implementing sustainable practices. "This change highlights the County's critical role as a regional partner in protecting the environment, developing sustainable operations and enhancing the vitality and livability of

the community," said County Chair Beverly Stein. The County is establishing sustainable development practices to improve services and reduce waste and pollution in its operations. The change will include adding alternatively fueled vehicles to the County fleet, and constructing and maintaining County facilities in a sustainable manner. "This new department will help us to use our resources more efficiently and reduce the County's energy consumption," said Chair Stein.

Sewage to Columbia Slough Finally Stopped

(AP) - For the first time in 100 years, the city of Portland has managed to stop sewage from flooding into the Columbia Slough when it rains. Now the city says it's time to do the same for the Willamette River. The river project is the second half of a \$1 billion plan to restructure the city's sewer system to reduce the amount of sewer water that spills into local waterways during heavy rains. The city plans to build a series of large pipes and pumps along the west side of the Willamette River over the

next five years. The problem dates back to the 1950s when Portland built its first sewage treatment plant. At that time, the city installed a "combined system" of large pipes that carried wastewater from homes and businesses, and storm-water runoff from city streets, sidewalks and parking lots to the plant. During times of heavy rainfall, however, the pipes couldn't handle the increased flow and the "combined" water backed up and spilled sewage into nearby waterways.

★ PORTLAND GENERAL ELECTRIC Presents ★

IRENE
"THE INSULATOR"

★ VS ★

BIG "BRRR"

Quick and Easy Tips
Go online for more tips.

It's quick. It's easy. And, in the fight to save energy, nothing packs a punch like insulation. Want more ways to come out a winner this winter? Log on to PortlandGeneral.com or call our Energy Experts at 1-800-722-9287. With 25 years of experience helping our customers, we're in your corner.

PGE
Portland General Electric
WWW.PORTLANDGENERAL.COM

DEEP INSIDE

Thomason headquarters,

SPECIAL MACHINES

smash car payments

INTO AN EASILY

digestible paste.

THOMASON
autogroup