



See Metro
Historic
Palmer house
for sale

Celebrating
30
Years
Of Service to Our City



See Metro
Racers to jam
Portland
streets in Race
for the Cure

Bulk Rate
U.S. Postage
PAID
Portland, OR
Permit No. 1610

The Portland Observer

University of Oregon
Knight Library
Newspaper Section
Eugene OR 97403

Volume XXX.
Number 37

www.portlandobserver.com

Committed to Cultural Diversity
Established in 1970

Wednesday
September 13, 2000

50¢

THE WEEK IN REVIEW

Freed Hostages Say Women Were Raped

TRIPOLI, Libya — One of four hostages released by Muslim rebels in the Philippines said captors raped some of the female hostages. A Finnish man said "a few of the women were treated in an inappropriate manner" by the Abu Sayyef rebel group, which is fighting for independence in the southern part of the Philippines. Upon the hostages released, rebels claim Libyan officials paid them \$1 million. Libya is denying they paid a ransom, but hostages claimed to see sudden signs of wealth in the camp, with their captors wearing new clothes and gold jewelry.

Calif. Creates Largest Scholarship Program

SACRAMENTO — California is promising to spend at least \$1.2 billion each year to create the nation's biggest state scholarship program, covering college tuition for all needy students with at least a C average. Under legislation signed by Gov. Gray Davis, the state will expand its current Cal-Grant program starting next year to pay tuition for eligible students at all of California's public and private universities.

Astronaut, Cosmonaut Go for a Spacewalk

SPACECENTER, Houston — An American astronaut and a Russian cosmonaut drifted out of space shuttle Atlantis, making a climb up the international space station that was more spacehike than spacewalk. Edward Lu and Yuri Malenchenko made the grueling ascent to lay cable and install a boom for a navigation unit on the exterior of the station.

OPEC Output Increase Won't Lower Prices

VIENNA, Austria — OPEC has agreed to boost its official output by 3%, but analysts say the move by the oil producers' cartel will not add enough new crude to world markets to roll fuel prices back decisively from 10-year-highs. OPEC members agreed to add 800,000 barrels to their daily production in the face of mounting international pressure to pump more crude and cool sizzling prices. They say the impact on prices will be meager — particularly for Americans who depend on heating oil.

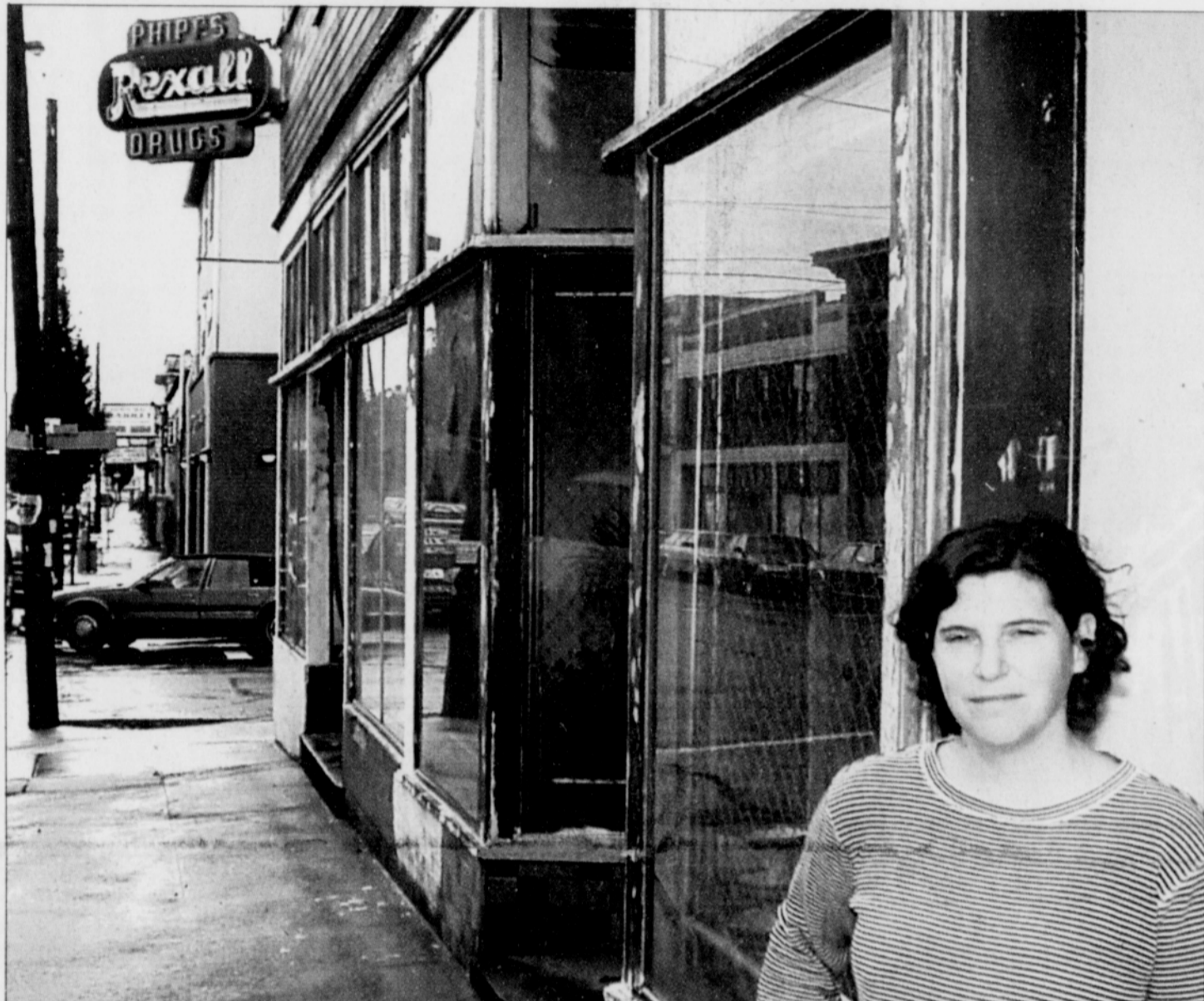
Iran Demands Apology; Clinton Meets Castro

UNITED NATIONS — The Millennium Summit had brought the globe together, but had also offered jarring reminders that political foes remain far apart. For instance, the White House — after initial denials — confirmed a hesitant President Clinton shook hands with Fidel Castro during a chance meeting, possibly the first such pleasantries between the Cuban leader and any U.S. president. And Iran's president made clear that wounds over U.S. involvement won't heal easily as he hinged improved relations to an apology.

Russia's Military to Make Deep Cuts

MOSCOW — Russia will slash its forces by nearly one-third over the next 2 years, the defense minister said, a sign that Russian officials have decided they can't afford their vast but dilapidated military. The cuts will slash about 350,000 people from the 1.2 million-strong Russian military. Sergeyev said the reduction would be complete by 2003.

Changing Face of North Mississippi



The historic buildings in her neighborhood inspire entrepreneur and artist Rachel Elizabeth. She's restoring a former Rexall drug store at North Shaver and Mississippi to its original 1900 condition.

PHOTOS BY MICHAEL LEIGHTON/THE PORTLAND OBSERVER

• Tucked Away
Neighborhood Sees
Rebirth

BY MICHAEL LEIGHTON
OF THE PORTLAND OBSERVER

New life is showing its face in one of Portland's most tucked-away neighborhoods.

The historic Mississippi District of inner-north Portland is surging with new development. And many folks think it's the tip of an iceberg of new development to come.

This is a community that doesn't get much of a look from most city residents. Many people don't even know it's there.

Years ago, Portland's freeway system, the construction of Interstate 5, and to a lesser extent the Fremont Bridge and I-405, put big road blocks around this part of town.

Looking around, you get the sense that time has stood still.

You can see the neighborhood's rich history by the old storefronts, apartment buildings, and historic homes that still exist today.

Many of these buildings have been beautifully restored, including the historic John Palmer house at Skidmore and Mississippi.

A couple of blocks south, a new rehabilitation project is at the corner of North Mississippi and Shaver. The former Phipps Rexall drug store is being restored.

Owner Rachel Elizabeth wants to bring the building back to its original 1900 condition. Elizabeth, who moved into the building

(Please see 'Mississippi' page 5)

Anthony Dancer (right) and Natalie Davis (far right) are part of a new work force in the historic North Mississippi neighborhood, serving as customer service assistants at the new ReBuilding Center.



PGE Park promoter Ron Henderson takes helm

• Portland Family Entertainment official sees new stadium as venue for 'Everyday Person'

BY MICHAEL LEIGHTON
PORTLAND OBSERVER

An Oregon native and long-time Portland resident is building grass-roots support for Portland's soon to be renovated PGE Park.



Ron Henderson is director of sponsorship sales and marketing for Portland Family Entertainment, the group renovating Portland's Civic Stadium into PGE Park.

Ron Henderson said the exciting thing about the renovated stadium will be the creation of a first-class sports venue for the "everyday person."

This will not be the Rose Garden, he said, where tickets can easily set you back \$65.

At PGE Park, many tickets will sell in the \$5-\$6 range. Portland Family Entertainment has partnered with Portland General Electric and the city of Portland to spend \$38.5 million to renovate the stadium at no cost to the local taxpayer.

The project is scheduled for completion in May 2001, just in time for the reintroduction of Triple A baseball.

The Albuquerque Dukes will be renamed, and relocated to Portland for the upcoming season.

PFE has also purchased an A-League soccer franchise through the expansion process.

The Portland Timbers will also begin play in PGE Park in 2001, returning professional outdoor soccer to the city after a 20-year absence.

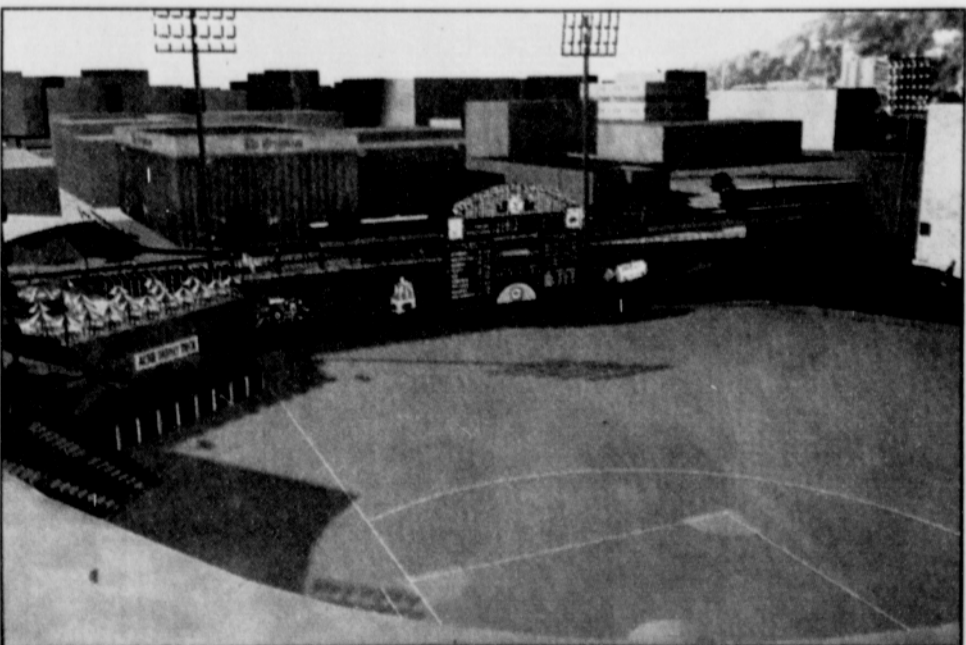
PGE Park pledges to continue its history as a valuable community asset, hosting Portland

State University football games, top-tier concerts, high school athletic events, and other community-oriented events.

Henderson began work for PFE in February. His responsibilities, as director of sponsorship sales and marketing, include

outreach programs and promotions.

Henderson was born in Klamath Falls. He is a graduate of Portland State University and spent five years as a media and public relations executive with the former Portland Beavers baseball club.



Portland's "place to happen" will feature the themed Fred Meyer Family Deck and a "vintage" manually operated baseball scoreboard that rises nearly seven stories above field level.