

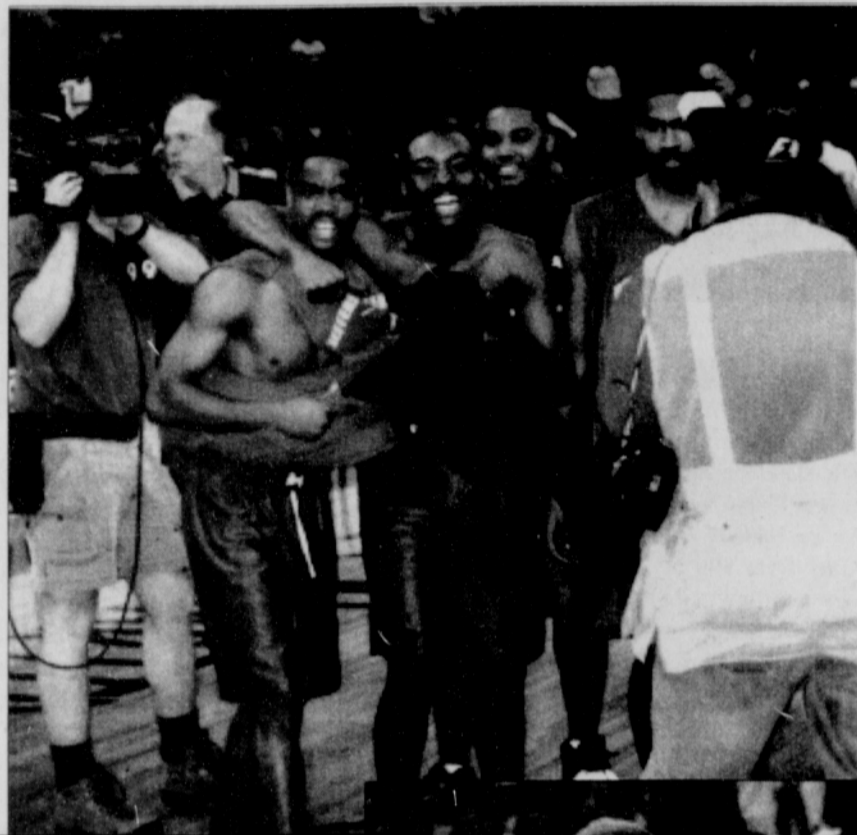
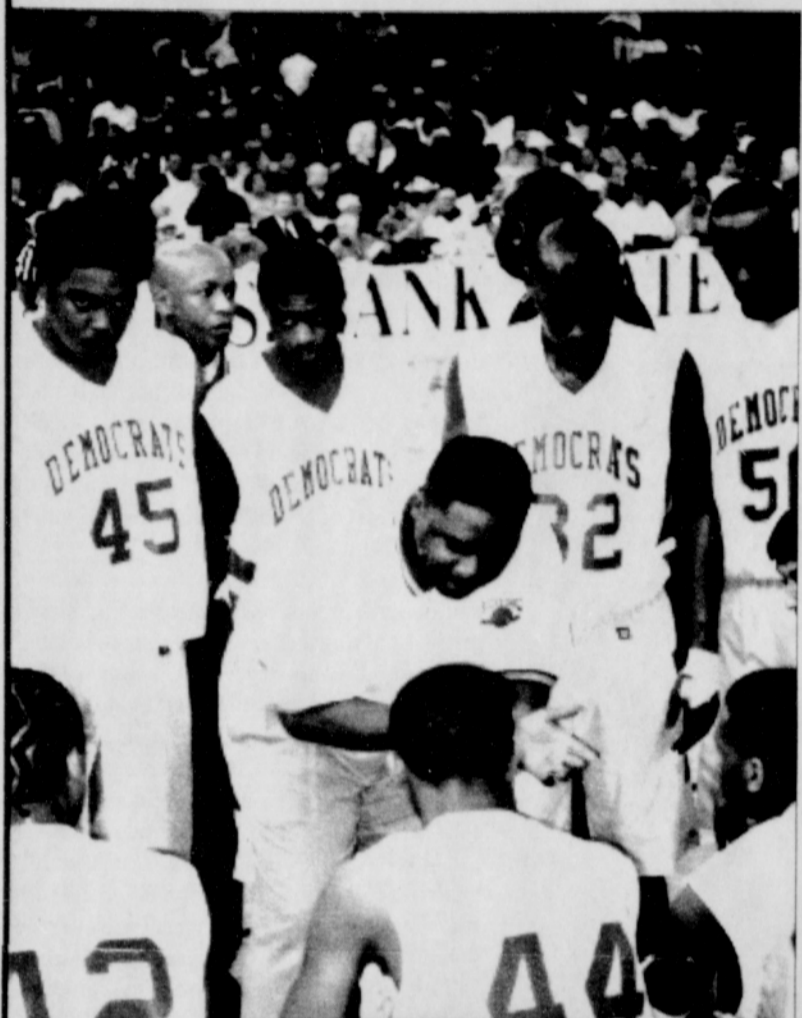


Metro/Sports



Have a safe and happy St. Patrick's Day

Portland's own Jefferson Democrats cruise to 28-0 season



PHOTOS BY: KELLY MOORE

LaNOSSI from page 1

clothing, without the formal training? I'm like Don King. For example, like I haven't gone to school for this industry, like Don King didn't go to school to be a promoter, but he's still ranked high among his peers for what he does, because he does it with finesse, style or what he needs to get the job done. If I've got a natural born talent, tune into that, into me and watch me with binoculars. Like Jermaine O'Neal and others professionally who do what they do

well. Like them, I came out of high school too perfect a talent; to do the best that I do...Naturally.
Q: How did you go from luggage and accessories to clothing?
 From my clothing stint in 1987. Then from that point and my development input with Marquis Ramone, it was just brought to light that I should start designing backpacks. I then came up with my own backpack creations and that spun into luggage. I was doing leather belts and keychains. And I thought, I've never heard of a

brother-designing luggage. Maybe someone will look at me and be like...that brotha's doin something.
Q: A friend & I are hoping that you come out with a line of lingerie...and maybe call it Naughty Nossi? Can we look forward to this anytime soon?
 Yes
Q: Have you been designing specific new fashions the grand opening of your new retail store on the corner of 33rd & Killingsworth?
 Yes, Spring & Summer fashions.

Q: So would you say that the new location is a resurgence of Lanossi? And if so, what can we expect?
 Yes. It's beautiful. I've got a billboard sign. I'm going to be able to look

down on everything. I can see what my consumers are buying & the trends. I've also got a big banner in the front of the business. It gives a message from me.
Q: What was your experience with your 1st location on 30th & Killingsworth?
 Well with the old location, I was told before I even opened that specific location, that I shouldn't have done it there. I didn't listen. I wanted to let any and everybody know that Lanossi exist and is true and that I'm trying to do something. I was hungry. There were a lot of dark days...But so what. My mother told me, if you never try, you'll never find out. So I tried.
Q: Who is a professional role model for you?
 Professionally, Russell Simmons. That's where I want to go with it. I'm trying to be on top of the world too.
Q: And who is your biggest role model or inspiration for continuing to do what you do?
 My grandmother, from what she instilled in me. My grandmother knew and knows how I was raised and what I've gone through. She showed me the best understanding of what it means to be a young man in life.

Q: If you could design the image or dress anyone...famous, not so famous or locally, who would it be and why?
 Samuel Jackson. He's classy & stylish. It would be an honor.
Q: And finally, what does Lanossi stand for?
 It's in reverse for: I shall Serve On Achievement and Leadership (LANOSSI) I developed it myself. Just one day in my creative breaks.

Volunteer With the YWCA

Want to make a difference in the life of a young girl?

SmartChoices, a YWCA empowerment program for 4th and 5th grade girls, is seeking volunteers and interns to assist with after-school programs designed to promote girls' intellectual, social, and personal development. Activities take place weekday afternoons from 3-5pm in Northeast Portland Schools.



Library Careers are as diverse as You!



The American Library Association is looking for people of color to help manage and maintain the information world in the 21st century. To learn more about Library/Information Science scholarships for graduate study, please contact us.

1-800-545-2433, x 4276 spectrum@ala.org www.ala.org/spectrum



Would you like to RENT A GYM?

Elementary & Middle School gyms in the Portland Public Schools are now for rent at special rates throughout the week.

Availability: March 27-June 2
 6:00-7:15 pm or
 7:15-8:30 pm

Rental rates: 10 weeks \$100-\$200
 Single dates \$25-\$35
 *\$15 application fee

For more information
 PPS Civic Use of Buildings Office
 at 916-3268 or 916-3256