



Business

Black **H**istory **M**onth

Katz proposes Gateway, Hollywood improvements

CONTRIBUTED STORY
FOR THE PORTLAND OBSERVER

Hollywood/Sandy and Gateway residents will have over a half-million dollars to their neighborhood visions into reality under a proposal by Mayor Vera Katz. Katz will send a resolution to City Council today to appropriate \$521,648 for the neighborhoods to implement parts of the vision plans they've worked on over the past

couple years. "For two years, the citizen of Gateway and Hollywood/Sandy have been working diligently on telling us what they want their neighborhood to look like, said Katz. "They're excited about their ideas, and I'm excited about their stepping up and getting involved. This money will mean they can now start taking their ideas off paper and turning them into real community projects they can be

proud of" During the 1999-2000 fiscal year, City Council appropriated money for projects that meet the city's Region 2040 growth goals and plans. Under the plans, Gateway has been designated a Regional Center, Hollywood has been designated a Town Center and Sandy Boulevard has been designated a Main Street. These places are transit-oriented, mixed-use areas of different scales.

Weapons from page 1

PSU actually reported less campus crime in several key categories than the University of Oregon or Oregon State University, according to The Chronicle of Higher Education, an independent monthly that compiles results of campus surveys required by federal law. The law is broad, however, and crime-reporting methods sometimes vary, making comparisons difficult. According to the survey from 1996-97, PSU had fewer incidents of burglary or car thefts than the other big university campuses. The school also reported fewer arrests for liquor violations, drugs and

weapons. John Fowler, the director of campus safety, who supervises the 15 security officers, said that PSU's low crime rate was a product of effective policing. He said the security force's visibility has meant that criminals stay away from campus. Bernstine said he wouldn't even consider requesting any changes without consulting the students and faculty. Idea turned down before The idea of arming campus security has been rebuffed in the past by the higher education board, which oversees the state's seven

universities. Slightly more than a year ago, PSU's security officers made an appeal that they be allowed to carry weapons. They argued that their safety was put in jeopardy regularly because they are prohibited from being armed. If the proposal were approved, the change would become effective on all the public university campuses. The board last week received a brief report on the issue explaining that PSU has unique circumstances: "As an open, urban campus, the campus community is at risk from potentially dangerous unaffiliated individuals with access to the campus."

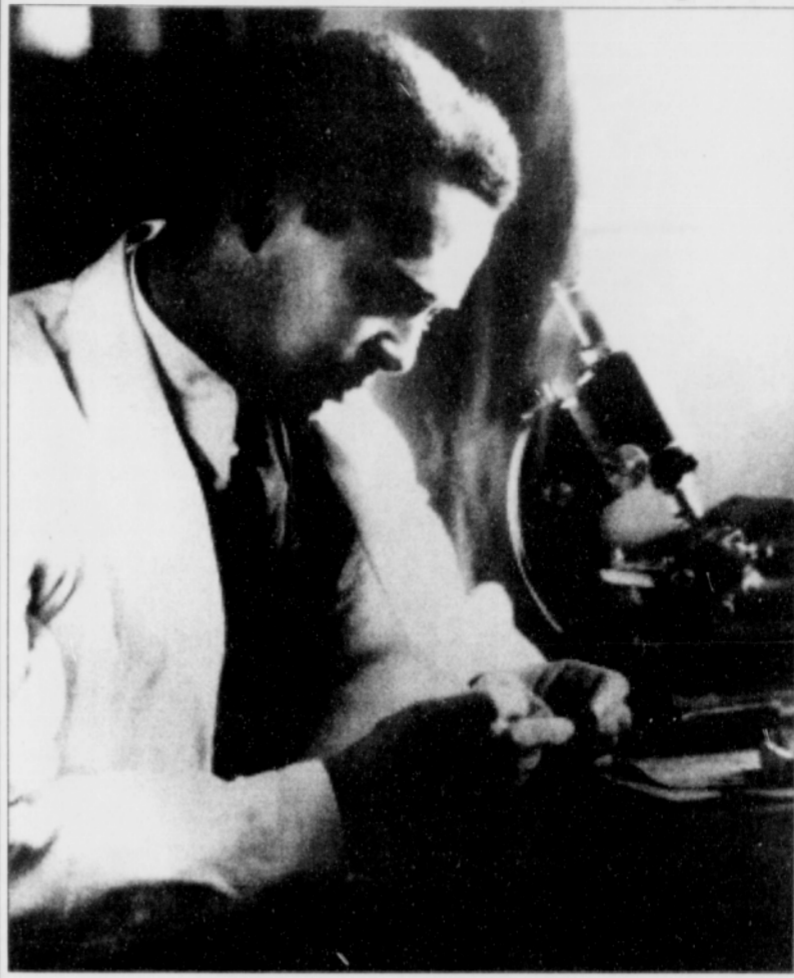
Safeway from page 1

recently given to stores on Northeast Broadway and Jantzen Beach. DiGregorio said he had requested a major makeover in the past and that the license issue "clouds the whole thing." Flanigan said Safeway had installed new coolers, check stands and deli. "We haven't been milking it," she said. The board later passed a motion by King's Sybil Kelley, and amended by

Sheila Holden, general business manager of Pacific Power, to form a broad-based committee to negotiate an agreement. "If the community supported you, how soon would you remodel?" Holden asked. "There's give and take here." Safeway officials indicated they would work with such a process. Board members said the letter reflected traditional coalition support

for the store, and that the board had not taken a position on the current situation. Paulson later commented, "In view of the effect on the neighborhoods involved, I think the letter should have been put before the board before it went out," however, "Willie has been a great president, and any damage from this will be minor and temporary."

Black History Month



Pioneer of Science—Ernest Rutherford graduated magna cum laude from Dartmouth College. He taught at Howard University's zoology and physiology department and conducted research at the Marine Biological Laboratory on Martha's Vineyard, where he advanced the study of parthenogenesis (growth of an organism from an unfertilized egg) pioneered by German physiologist Jacques Loeb. In his prolific career, just received many awards and grants — including the first-ever Springarn Medal, in 1915, for his groundbreaking research in biology and embryology. But despite his outstanding contributions to this field, he was never granted an appointment to a major institution or elected to the National Academy of Sciences. Frustrated by this lack of recognition in the scientific community, he eventually moved to Europe.

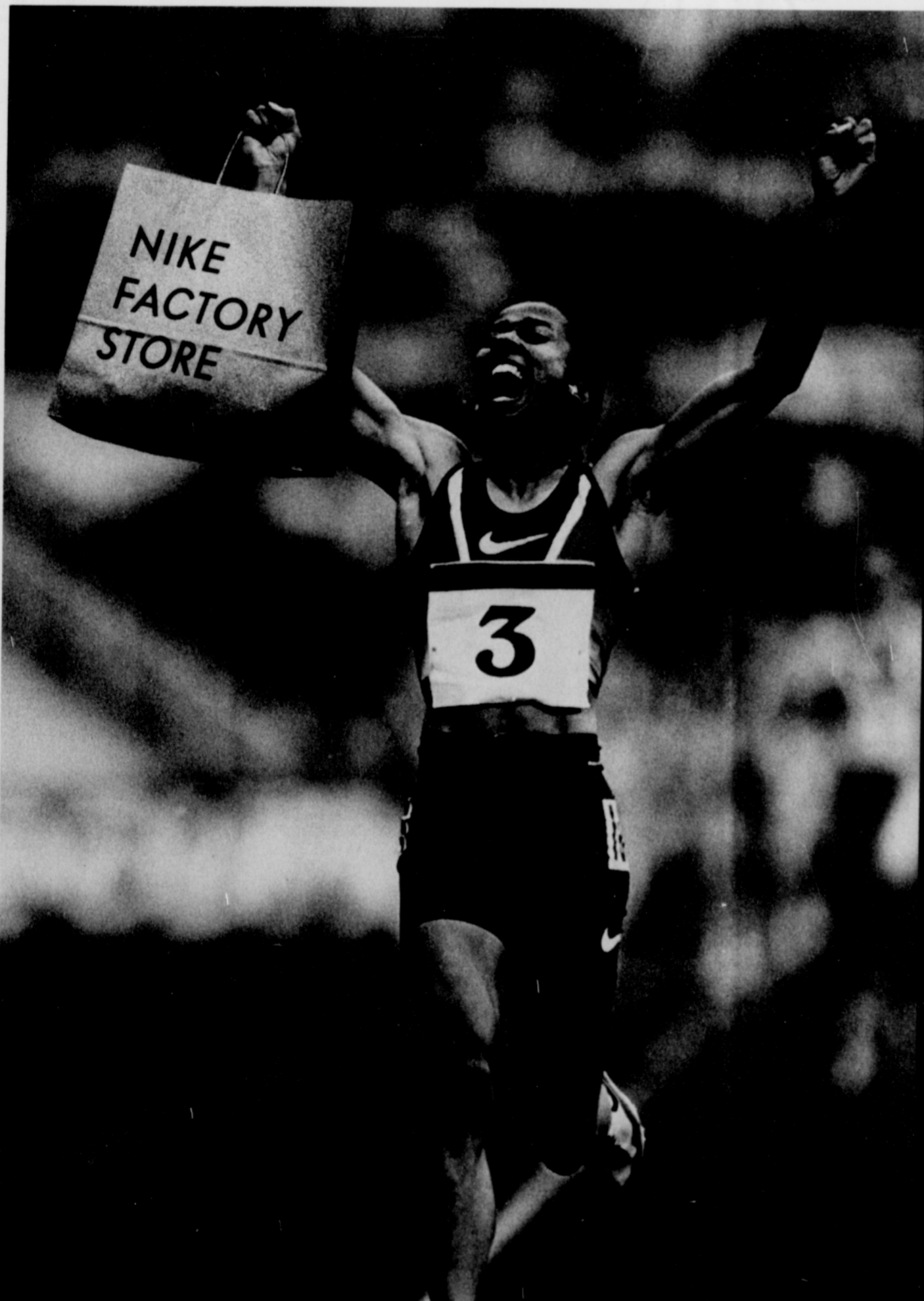
Blue Book now available online

CONTRIBUTED STORY
FOR THE PORTLAND OBSERVER

Secretary of State Bill Bradbury announced the release of the new online version of the Oregon Blue Book at the state capital today in 21st century fashion: the press conference was broadcast live on the internet. "We are excited about the new look of the online Blue Book, and wanted to publicize its accessibility in the

manner in which it will be used — online," Bradbury stated. "The new web site is much easier to navigate and gives the public more information in one place," he added. The latest edition of the Blue Book contains several new features, including a page designed just for kids. Online users can now access county and community profile information through a link to the Oregon Economic and Community

Development Department web page. The Secretary of State's office is also in the process of providing links to information about the working of individual state agencies. Soon the history, administrative rules, budget information, audit reports and public records of a particular agency will be available online. The online edition can be seen by visiting: <http://www.bluebook.state.or.us>.



NIKE FACTORY STORE

2650 NE MARTIN LUTHER KING JR. BOULEVARD
503-281-5901

