

RELIGION

Long-Term Care Seminar

Do you know how to safeguard and protect your assets? Do you know how to create a living will or a durable power of attorney? The answers to these questions and many others will be answered at the seminar "Planning for Long-Term Care" held at Bethel A.M.E. Church on Saturday, October 23 from 9 a.m. - 12:30 p.m. with registration starting at 8:15 a.m.

Tim Nay, an attorney who specializes in elder law, will take about the legal and financial planning all adults should consider. Rick Davison, the founder of Adult

Living Alternatives will discuss the various types of living arrangements available to individuals who can totally care for themselves or who may need some assistance. The registration fee is \$5.

To obtain registration information, please call Bethel A.M.E. Church at 288-5429 or the committee Co-chairperson, Joyce Rasin, PhD at 494-3855.

Sponsored by the Commission on Missions and Welfare, Bethel A.M.E. Church, Angle Davis Chairperson, Rev. Ronald Williams, Pastor.

Irvington Covenant Church

Irvington Covenant Church is pleased to announce the celebration and dedication of its new church/home on October 17, 1999 @ 10:00 a.m. and 4:00 p.m. Founded in 1988 by Pastor Henry Greenidge the church is located at 4046 NE Martin Luther King Jr. Blvd. Irvington Covenant Church is a growing, worshipping, celebrating community dedicated to embracing diversity, as well as caring for the poor and needy.

We invite you to a place where your dreams, your goals, your successes are important to us.
WE ARE WORLD CHANGERS!

OBITUARY

Mildred Jackson Love

A funeral was held at 1 p.m. Friday, Oct. 8, 1999, in Portland Memorial Funeral Home for Mildred Jackson Love, who died Oct. 4 of diabetes at age 83.

Mrs. Love was born Feb. 17, 1916, in Gonzales, Texas. Her maiden name was Jackson. In 1943, she moved to Portland, where she attended Vanport College (now Portland State University), Oregon Institute of Technology, Portland Secretarial School and Northwestern School of Commerce. For 15 years, she was a clerk for the Selective Service System and an accounting control clerk and assistant teller for the U.S. Internal Revenue Service before her retirement in 1967. A quilter, she contributed squares to an African American heritage quilt displayed in the Smithsonian Institution in Washington, D.C. She was a member of New Hope Missionary Baptist Church. In 1934, she married Finnis V. Love Sr.; he died in 1971.

Survivors, all of Portland, include her son, Finnis V. Jr.; daughters, Freda V. McEwen and Faith V. Love; sister, Rozelle J. Yee; and three grandchildren. Her son Dr. Franchot V. Love died in August.

Disposition is by cremation. The family suggests remembrances to the American Diabetes Association. Arrangements are by Portland Memorial Funeral Home.



RE/MAX

Signature Properties
Independently Owned and Operated

Greg Washington
Sales Associate
Multi-Million Dollar
Producer

2717 NE Broadway
Portland, Oregon 97232
Office: (503) 282-4000 x 106
Fax: (503) 282-8558
Voice Mail: (503) 497-4607



REALTOR

Pastor Robert L. Weaver

And
THE LIFELINE CHRISTIAN CHURCH
5949 N. Albina Ave.
Portland, Oregon

PRESENTS
A Greater Portland, Oregon - Vancouver, WA
30 Day
"CITY-WIDE REVIVAL"

(Featuring different Church Pastors each night)
Monday, October 11, 1999 through
Friday, November 19, 1999
(No meetings on Saturdays and Sundays)

Place: First AME Zion Church
4304 Vancouver Avenue
Portland, Oregon
Time: 7:00 PM

For More Information: Call 503-247-9503 - Church
503-705-1673 - Cellular

Gospel Music Talent Search

Nashville - Southern Communications of Nashville Tennessee is conducting a song and artist search. The Southern Gospel talent search will offer grand-prize winners a national release to Southern Gospel radio.

Entry forms are now available. All entries must be received no later than Wednesday, November 10th, 1999. For over 15 years Southern communications has charted radio hits for such artists as Ricky Skaggs, The Cathedrals, the Gaither Vocal Band, The Martins, and Bruce Carroll among others.

To receive entry information call 615.345.2500 or visit Southern Communications on the Web @ www.socompro.mid-tn.com.

IRVINGTON COVENANT CHURCH

Invites You to:

OUR GRAND OPENING OCTOBER 17TH @ 10 A.M.

Discover the Difference At Irvington to Covenant Church

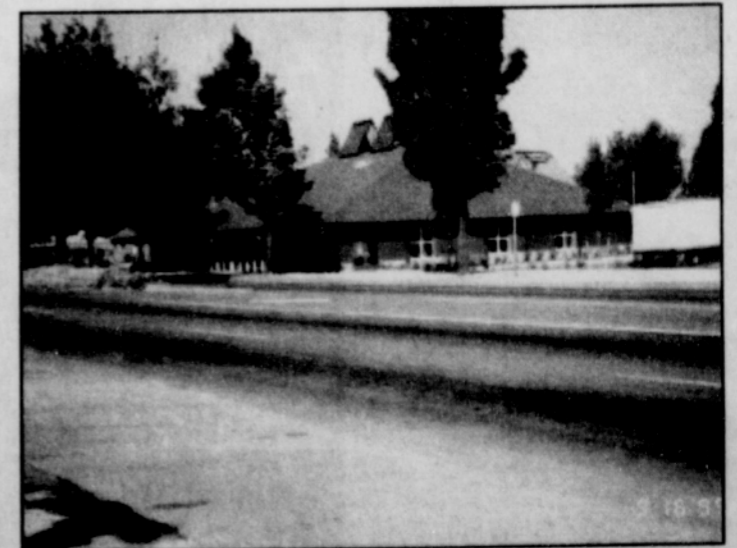
Become a part of our Irvington Covenant Family



At Irvington we want you to know that

WE CARE ABOUT YOU

We care about your life
We care about your kid
We care about the Bible
We care about the Community



Irvington Covenant Church

4046 N.E. Martin Luther King Jr. Boulevard (between Mason & Shaver)
(503) 287-5226 or visit our web at www.irvingtoncovenant.com

Real People - REAL LIFE - REAL Answers

Please join us on Sunday at our New Worship & Service Center