

NEIGHBORHOODS

Eco – Friendly by Design

Gateway Commons in Southeast Portland is an innovative project of Integrated Urban Habitats that are sure to capture the interests of those who value a more cohesive sense of neighborhood and ecological sustainability. It was designed and built by Erroyl Hawley, an ecologically progressive urban builder/developer.

Hawley along with Deborah Ham, a Realtor and personal growth consultant who has 25 years of experience in alternative community living situations have blended their unique skills with a fierce interest in and commitment to ecology, economy and community which has resulted in a promising future for intentional community in greater Portland.

Here's a brief synopsis of the sites currently being developed:

Gateway Commons: within the 102nd light rail system area in East Portland. Excellent public transportation, both bus and rail with easy highway connections. Affordably

priced, with current estimates at \$99,000-\$130,000, depending on the amount of common/community space envisioned by the eventual purchasers.

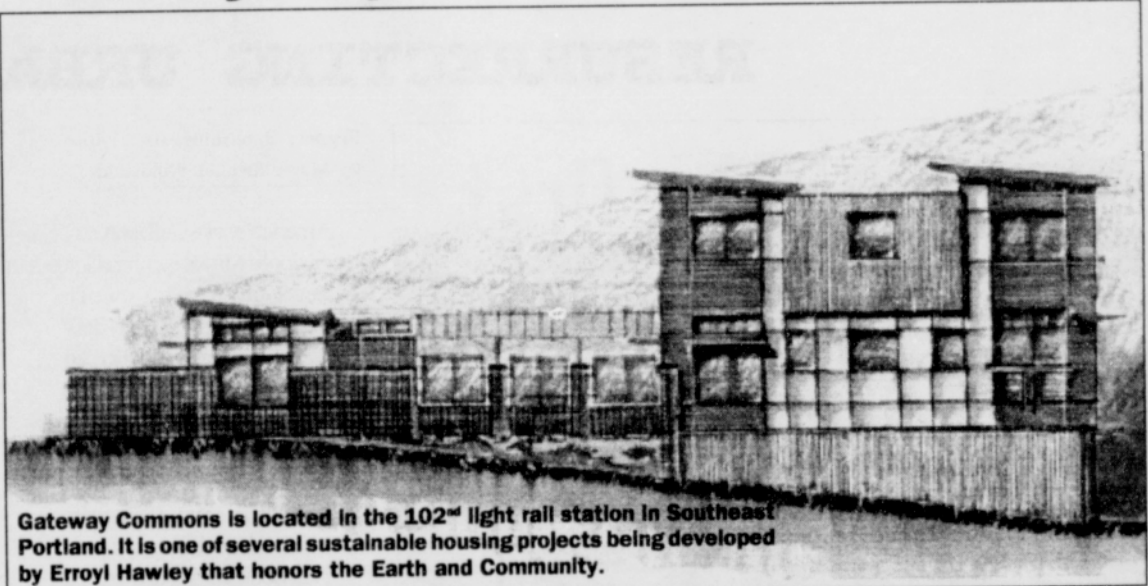
SpringWater Commons: near the Spring Water Corridor between 113th & 122nd in SE Portland. Convenient bus transportation and highway connections. Very affordably priced between \$85,000-\$110,000.

Walnut Park Commons: situated between Tigard and Beaverton amongst lovely trees, with a creek, pond and wetland habitat. Option for upscale housing in a community context – subject to desires of purchasers.

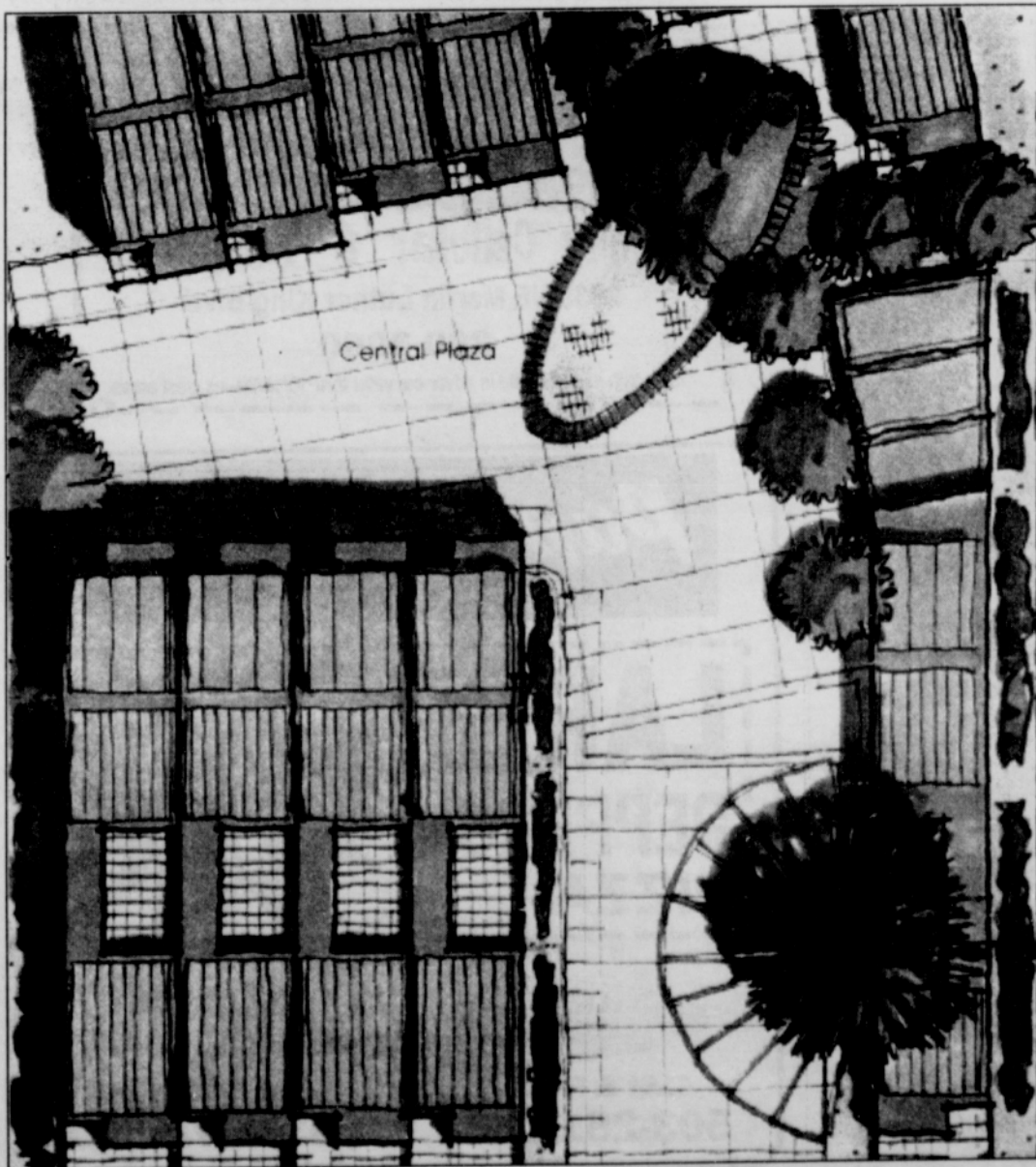
All of his neighborhood sites provide opportunity for progressive environmental design. Solar and energy wise technology, healthy and sustainable materials, natural landscaping and natural resource preservation will all be incorporated into these projects. A variety of housing opportunities is anticipated including townhouses, flats,

lofts and households, including couples, families with children, seniors and singles.

For more information, contact Erroyl Hawley of Integrated Urban Habitats at 503/245-7375.



Gateway Commons is located in the 102nd light rail station in Southeast Portland. It is one of several sustainable housing projects being developed by Erroyl Hawley that honors the Earth and Community.



LIVE MUSIC

NIGHTLY

McMenamins
WHITE EAGLE
CAFE & SALOON
 836 N Russell Street • Portland • (503) 282-6810

A PORTLAND LEGEND