

Oregon Arts Commission Announces Deadline for Arts Build Community Grants

The Oregon Arts Commission has announced the deadline for Arts Build Communities grants, designed to recognize and support the use of the arts in building and strengthening Oregon communities.

"The commission believes that the arts are integral to community development in Oregon, and this program recognizes the expanding role arts organizations are taking in the broader social, educational, and economic arenas of their communities," said Christine D'Arcy, Oregon Arts Commission director.

Arts Build Communities is designed to broaden the impact of the arts in the community and foster community partnerships, D'Arcy said. The program's goal is to better con-

nect local arts and cultural resources with specific problems and opportunities facing communities. The initiative also offers opportunities for arts organizations to enhance their role in the community to increase the impact of the arts on community life.

Funding support from the USDA Forest Services Rural Community Assistance Program will match the grant awards of the Arts Build communities grants which directly support communities which have been under-served by arts services. Under-served communities include those isolated by geography and both rural and urban communities with history of powerful social, cultural or economic barriers.

Arts Build Communities grants are available to both non-profit organizations and local government programs.

Applications will be accepted until a postmark deadline of Oct. 30, 1999. Grant requests must be for activities and projects occurring between Jan. 1 and Dec. 31, 2000. To request an application, write to the Oregon Arts Commission at 775 Summer Street NE, Salem, Oregon 97310, or call (503) 986-0088. Guidelines are also posted on the commission's web page at art.ec@state.or.us.

FRIENDS OF TREES ANNOUNCES

Neighborhood Planting Schedule for 1999 - 2000 Season

Now's the Time for Property Owners in Northeast Portland to Order Trees

Friends of Trees' Neighborhood Planting season will involve many communities in Southeast Portland during the 1999-2000 planting season. Summer is the time for property owners to express their interests in purchasing street trees at a great price (\$45 - \$65 including the tree, stakes and ties, hole digging and help on planting day).

A Friend of Trees is entering year 4 of its five-year, Seed the Future Campaign to restore our urban forest and strengthen communities. To date,

10,450 volunteers have helped plant more than 85,000 trees and seeding throughout the Portland region. With only two seasons remaining with Seed of Trees Executive Director. "This is the best deal in town to help beautify the neighborhoods, improve the environment and to meet neighbors," Harmon-Walker concluded.

Neighborhood projects scheduled for Northeast Portland in the winter/spring of 1999-2000 include:

- Beaumont-Wilshire •Concordia

- Cully •Grant Park •King
- Rose City Park •Roseway
- Sullivan's Gulch •Vernon

If you are interested in purchasing a tree, helping out with any other of these projects or to learn more about Friends of Trees and its Seed the Future campaign, call 284-TREE (8733).

For more information call 284-TREE (8733) or email us at FOT@teleport.com.

Light Rail Repair Work

In Lloyd District Will Reduce Eastside Max Service for 3 Weeks

Beginning July 15th, Tri-Met contract maintenance crews will replace a switch at NE 11th and Holladay Street. The work will mean Eastside Max riders will experience delays of up to 15 minutes during rush hour, and 5-7 minute delays the rest of the day. The project will be completed within 2-3 weeks, and no later than Tuesday, August 3rd.

Because Eastside Max trains will operate on a single track through the Lloyd District, Tri-Met must reduce the number of trains operating dur-

ing rush hour.

• Eastside Max will operate every 10 minutes, even during rush hour when trains run an average of every 7 minutes.

• Because fewer Eastside Max trains will be operating during rush hour, customers should leave earlier to get to and from work or plan an alternate travel mode.

• Eastside Max trains will be more crowded than usual during rush hour. To avoid the crowd, riders should consider taking a bus from Gateway or

Hollywood Transit Center.

• In addition to ensuring continued safe operation of the switch by the Vintage Trolleys, these repairs will allow Tri-Met to store an additional Max train on NE 11th Avenue that can be used to provide extra service for Rose Garden events.

For trip-planning assistance, call 238-RIDE weekdays between 7:30 AM and 5:30 PM.

18th Annual MT. HOOD JAZZ FESTIVAL

presented by Tesoro Petroleum Corporation

featuring

Fred Meyer Friday Night Blues, August 6th



Little Feat
Friday, Aug 6th



Neville Brothers
Friday, Aug 6th

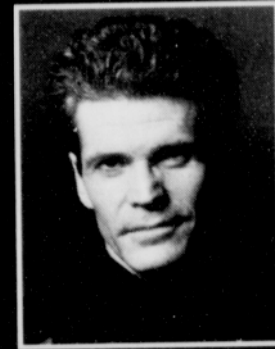


Ronnie Earl & The Broadcasters
Friday, Aug 6th

Saturday, August 7th



Clarence Gatemouth Brown Big Band
Saturday, Aug 7th



David Sanborn
Saturday, Aug 7th



Nneena Freelon
Saturday, Aug 7th

Sunday, August 8th



Royal Crown Review
Sunday, Aug 8th



Bruce Hornsby
Sunday, Aug 8th



Richard Elliot
Sunday, Aug 8th

- Mose Allison • Sphere, "Honoring Thelonious Monk"
- Flora Purim & Airo • Spirituals To Swing, "100 Years Of Jazz History"
- Danilo Perez • The Jazz Messengers, "The Legacy Of Art Blakey"
- Darrell Grant, "The Spirit of Ellington" • Mark Isham, "The Silent Way Project"
- Kirk Whalum, "Gospel According To Jazz" • Keiko Matsui
- Jeff Golub With Avenue Blue • Jeru Blue, "Tribute to Gerry Mulligan"

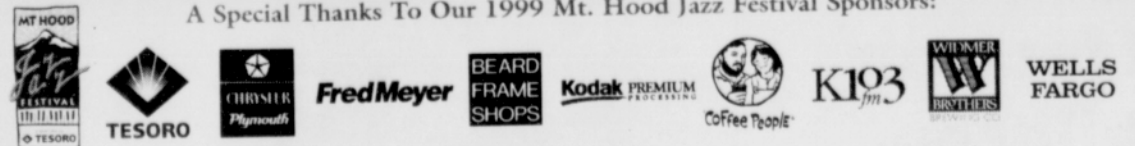
plus Ellen Whyte & Reflex Blue, Paul Mazzio, Dan Faehnle, Jerry Hahn, Dr Jazz & The Interns, Mary Kadderly, Jed Wilson, People Music Project, Black Swan Classic Jazz Band, and Beacock's All-Stars.

AUGUST 6 - 8, 1999

Mt. Hood Community College/Gresham Oregon

Tickets are on sale at all TicketMaster outlets, including GI Joe's and Meier & Frank locations, on the web at www.ticketmaster.com, or by calling (503) 224-4400. For 3-Day Reserved Seats, call (503) 231-0161. For more info on the Mt. Hood Jazz Festival visit our website at www.mthoodjazz.com.

A Special Thanks To Our 1999 Mt. Hood Jazz Festival Sponsors:



also sponsored by ACT-Advanced Communication Technologies, Inc., American Airlines, The Boeing Company, Equity Group, Inc. Realtors, Fujitsu, KMHD-FM, Mt. Hood Meadows Ski Resort, Oregon Lottery, Pacific Inns, Perion Bottled Water, VoiceStream, Tazo Tea Company, Willamette Valley Vineyards & Zuka Juice

AN EVENING WITH PORTLAND'S BEST AMATEUR TALENT!

P-TOWN TALENT NIGHT

SATURDAY, JULY 31st • 7:00 P.M.
THE ALADDIN THEATRE

COMEDY & DRAMA!
VOCAL/INSTRUMENTAL
MUSIC!
DANCE!

THE BEST LOCAL AMATEUR TALENT!

SPECIAL GUEST PERFORMERS!

\$8.50 IN ADVANCE, \$10.50 DAY OF SHOW

GET YOUR TICKETS NOW AT ALL TICKETMASTER LOCATIONS & THE ALADDIN THEATRE BOX OFFICE.

PORTLAND OBSERVER READERS!

Win a **FREE** ticket to the 1999 Mt. Hood Jazz Festival. Simply complete and return the coupon below. Quantities are limited so return the coupon today! Coupon must be received by July 26, 1999!

YES I want a free ticket to the 1999 Mt. Hood Jazz Festival!

Name _____
Address _____
Zip _____
Phone(Day) _____

Return this form to:
Portland Observer
4747 MLK Jr. BLVD
Portland OR 97211