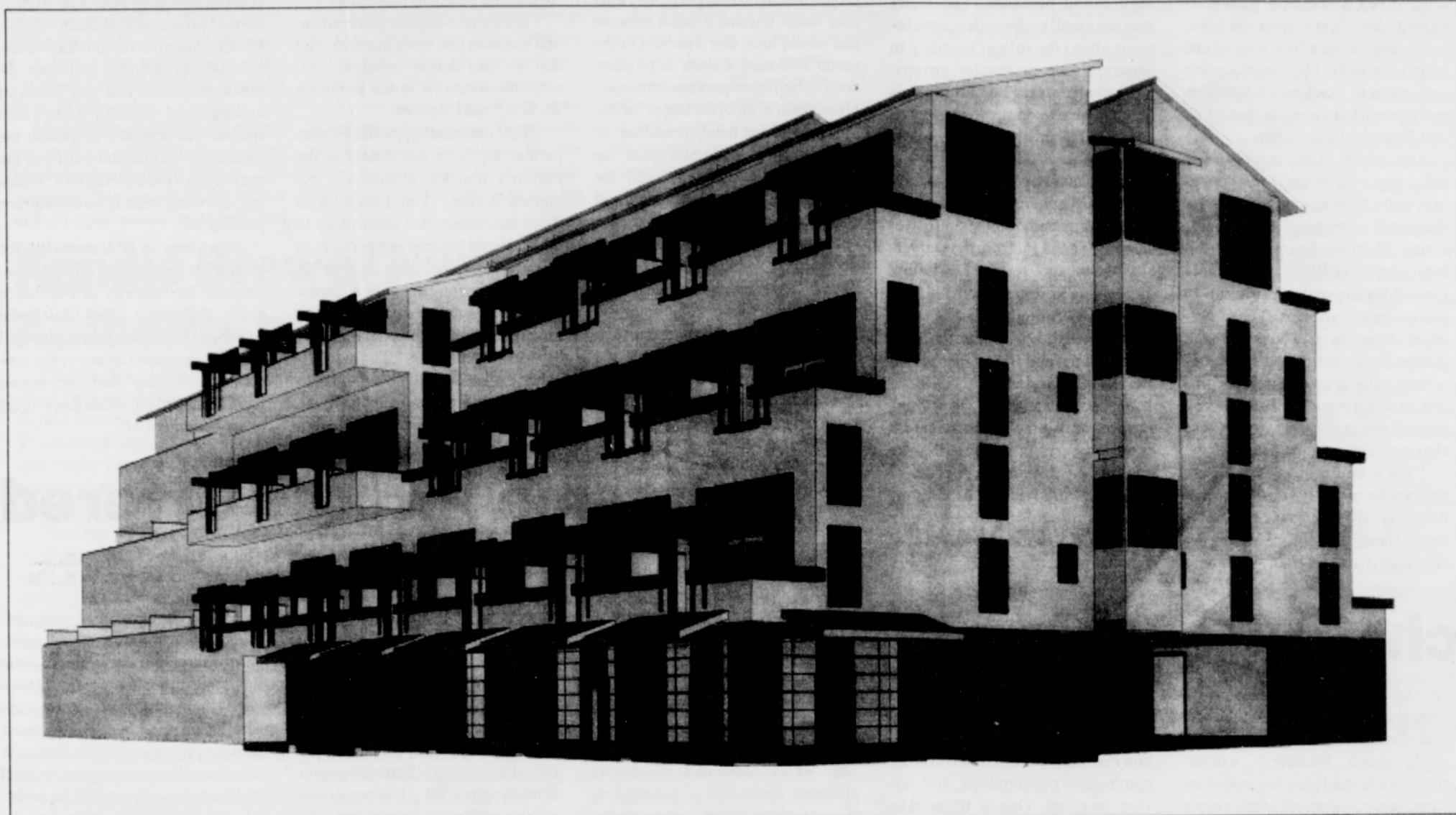


Family Living

New Multi Family Complex

National Poetry Month



Developer Bill Reed is planning to build a multi-family housing structure on the block bounded by North Williams and Vancouver Avenue and Fargo and Cook Street. The building will have 6,000 square feet of ground floor retail space along Williams and Cook, and a 100-car garage, beneath 70 units of rental housing in a structure 60 feet high. Reed says he plans to submit a land use proposal to city sometime in April.

Multnomah County Library's Central Library will host four free events in celebration of National poetry Month in April.

On Wednesday, from 7-9 Will Schneberg (Oregon Literary Arts Fellowship Recipient and author of "Box Poems") leads "The Poetry of Place," a workshop for adults focusing on the role of place in poetry. Participants will find out how inspirations from places such as childhood homes, vacation locales, towns only read about and the sites of imagination can become vibrant material for poems. The group will read poems by contemporary poets and view slides from familiar and exotic climes in which place is a central focus, then write poems and share them. Participants are asked to bring copies of a place poem they have already written. The workshop will be held in the U.S. Bank Room and space is limited and on a first-come, first-served basis.

All National Poetry Month events are free and open to the public. Central Library is located at 801 SW. 10th Ave., Portland. For more information, call 503/306-5578.

Texaco, American State Bank Partners with Portland Community College in Community Mural Contest

PORTLAND Is Your Vision Big Enough?

If your ability to see the big picture in the Northeast Portland community is only matched by your artistic ability, Portland Community College wants to hear from you.

American State Bank, Texaco and PCC are banding together to find the right artist to make their mark on the south wall of American

State Bank off Northeast Martin Luther King Jr. Blvd. With the theme "Transformed by Time - A History of Community Strength," artists will be asked to present judges with artwork that captures the history of the community. The mural will cover a 16-foot by 50-foot surface. An official unveiling

of the completed mural is tentatively scheduled for September.

Artwork must be submitted to the Associated Students of Portland Community College (ASPC) office at PCC's Cascade Campus, SC 103, by 5 PM, Wednesday, May 12.

For artwork design specifics

and submission and application details, call Kendi Esary at 978-5781. Information can also be obtained by attending a kickoff ceremony for the mural art contest on Tuesday, April 6 at the Cascade Campus, 705 N. Killingsworth, in Room 122 of Terrell Hall, from noon to 1 PM.

Older Women and Affordable Housing

Saturday, April 10, 1999

The Portland Chapter of the Older Women's League (OWL) invites mid-life and older women to an open meeting and discussion opportunity.

Time: 9:45 a.m. to Noon

Speaker: Ms Diane Luther, Exec. Director, NW Housing Alternatives

Title: "Are Midlife And Older Women Priced Out Of Affordable Housing?"

Place: Portland Impact Center, 4707 SE Hawthorne

Bus: #14 Free Site: Wheelchair accessible

For information about O.W.L. or about the meeting, call 771-2583

Mozart and Tchaikovsky's to Highlight Symphony Sundays Concert

Portland Native and pianist Susan Dewitt Smith will join Associate Conductor Norman Leyden and the Oregon Symphony to perform Franz Liszt's dazzling Piano Concerto No. 1 in E flat major, at the Symphony Sundays Center for the Performing Arts Media support for symphony Sundays is provided by 1190 KEX and Sforzando.

Leyden also will conduct Mozart's enchanting Overture to "The Magic Flute," Dvorak's "Two Slavonic Dances (Op. 46. No. 3 and Op. 72, No. 2)," Johann Strauss' Viennese Waltz: Where the Lemon Trees Bloom,

Rimsky-Korsakov's "The Young Prince and the Princess" from "Scheherazade" and Tchaikovsky's thrilling "1812" Overture.

General admission tickets are \$16 for adults. \$11 for students, seniors and children (12 and under) may be purchased at the Oregon Symphony Ticket Office (923 S.W. Washington) Monday-Saturday, 9 a.m. to 5 p.m. Tickets also may be purchased at all Ticket master outlets (790-ARTS) or through the Symphony's Web site at www.orsymphony.org. Service fees may apply.

Exclusively for Safeway Club Members

20% Off Meat Sale!

4 DAYS ONLY

April 7 thru 10

All Beef, Poultry, Pork, Seafood & Packaged Meats* all 20% Off.

*Excludes Service Deli Meat items, retail quantities only. No sales to dealers or wholesalers

Now the savings are in the Card!



Look For Your Safeway Weekly Shopping Guide

In Your Oregonian FOODday in the Portland Metro Area...and save more by shopping at Safeway



Visit Safeway's Web site at www.safeway.com

PRICES EFFECTIVE APRIL 1999

Sun	Mon	Tue	Wed	Thur	Fri	Sat
			7	8	9	10

Items & prices in this ad are available at your local Safeway store. No sales to dealers, restaurants or institutions. Sales in retail quantities only. Quantities of some items may be limited and subject to availability. Not responsible for typographical or pictorial errors. We reserve the right to correct all printed errors. © 1999 Safeway Stores, Inc.