

E d u c a t i o n

Portland OIC/ Rosemary Anderson High School



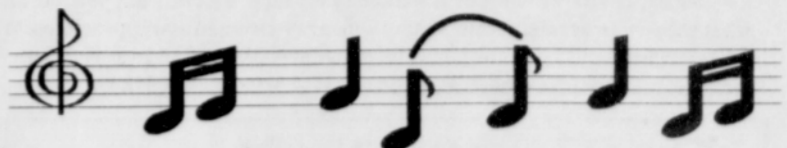
Will be accepting applications for Pre-Registration which began August 17 and will be open until August 28, 1998. POIC/Rosemary Anderson High School will be offering high school courses, GED preparation, school-to-work program, Metals Technology, and CAD. We have recently moved back into our newly remodeled & expanded building. It's going to be a very exciting year for students at POIC/RAHS!

So enroll now!

POIC/RAHS will also be offering an on-site day care for its teen parents with infants from 2 months up to 3 years of age during school hours. Teen parents wanting to enroll should do so immediately there will be limited enrollment for infants and toddlers.

Office hours are from 8:00 am-5:00 pm feel free to drop in or call and set up an appointment with POIC Counselor's. Please bring in a copy of your transcript when applying.

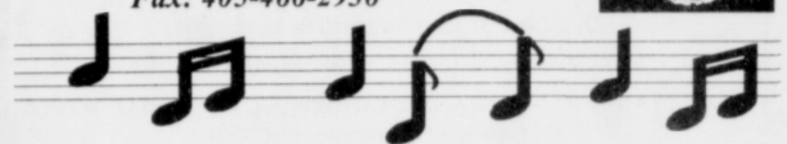
Accredited by the Northwest Association of Schools and Colleges



Music Scholarships Available at Langston University

There are choir and band music scholarships available for the 1998-99 academic year at Langston University. Outstanding instrumentalists, singers and pianists, are urged to apply for one these awards. Langston University is the only African American institution in the state of Oklahoma, and is celebrating its' centennial year of service. For more information, please contact:

Chairman
Department of Music
Langston University
P.O. Box 972
Langston, OK 73050
405-466-3417
Fax: 405-466-2936



Portland (and surrounding areas) Families NEEDED to Host Foreign Exchange Students

Foreign high school students will be arriving into the local area for homestay programs for the 1998/99 school year and Pacific Intercultural Exchange (PIE) NEEDS local volunteer host families.

PIE is a non-profit educational organization. The students are all between the ages of 15 and 18 years. They bring their own spending money, have full medical insurance and are anxious to share their cultural experiences with their new American families. PIE's academic homestays

range in length from one semester to a full academic year, while the students attend local high schools.

PIE representatives match students with host families by finding common interests and lifestyles through and informal in-home meetings. Prospective host families are able to review student applications and select the "perfect match." As there are no "typical" host families, PIE can fit single parent, a childless couple, a retired couple, or a large family.

For 1998/99, PIE has students

form Spain, Germany, Belgium, Ghana, Mexico, Yugoslavia, Armenia, Kazakhstan, Kyrgyzstan, Poland, China, Japan, as well as other countries. PIE has sponsored more than 13,000 students form 18 countries since its founding in 1975.

Families interested in learning more about hosting, should call Teresa Knapp at 1-800-894-7633, or the international headquarters at 1-888-PIE-USA1.

THANK YOU FOR OPENING YOUR HEART AND YOUR HOME!

Looking for enjoyable work?

REI is now hiring qualified outdoor sales people. Join one of the 100 Best Companies in America.

To learn more visit

REI's Job Fair

Saturday, September 12

9:00 a.m. to 2:00 p.m.

Meet REI management team staff, learn about REI and interview!

Portland REI—283-1300

Tualatin REI—624-8600

1798 Jantzen Beach Ctr.

7410 SW Bridgeport Rd.

We are proud to be an EEO/AAE employer.



HAVE YOU EVER WANTED TO FLY JETS?



The Oregon Air National Guard 142nd Fighter Wing is looking for men and women for future pilot training positions.

Minimum Qualifications:

- Excellent Health
- Bachelor's Degree
- Desire to Excel
- Must Enter Pilot Training Before Age 27

Benefits:

- USAF Flight Training
- Worldwide Travel Opportunities
- Pay
- Lifetime Friendships
- Retirement

Come Fly the F-15 Eagle with Oregon's Redhawks

Contact:

Your Air Guard Recruiter at
1-800-392-1801

PCC Part of National Computer Training Effort for Welfare Recipients

Portland Community College and nine other community colleges across the country, including Mt. Hood Community College in Gresham, are part of a \$4.9 million high-tech effort that pairs the colleges with Private Industry Councils, employers and welfare recipients.

The 18-month project, which began July 1, will place over 2,200 welfare recipients in five, high-demand occupations where employers say they are having a tough time recruiting and retaining workers. In addition, people on welfare will improve their long-term earning and learning potential.

"This is an exciting opportunity to partner with employers in new ways by offering post-employment education and training at the worksite," said Non Poppe, dean of Adult and Continuing Education at Portland Community College.

Targeted occupations include building maintenance, customer service, home care worker, office worker and security guard. The funds will be used in part to give community college instructors a way to monitor workers' progress from a remote location and to communicate electronically with the trainees.

The project is sponsored by the American Association of Community Colleges, the National Association of Private Industry Councils and Instructional System, Inc.



**SAFeway
FOOD & DRUG**

Look For Your Safeway Weekly Shopping Guide

In Your Oregonian FOODday
in the Portland Metro Area
...and save more shopping
at Safeway



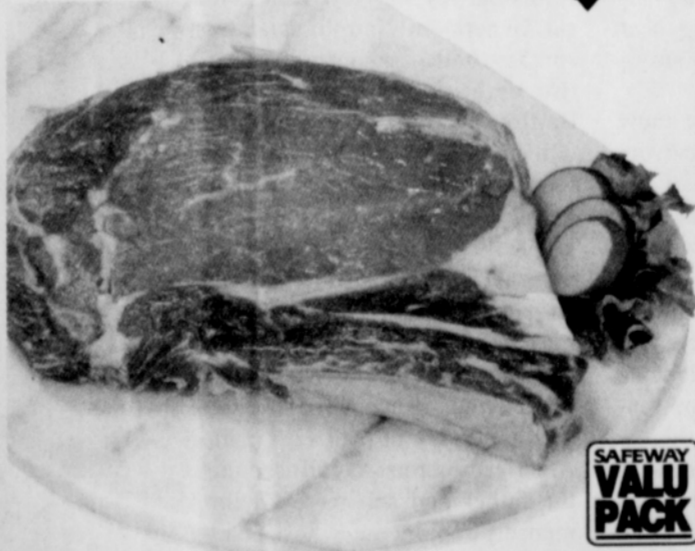
Visit Safeway's Web site at
www.safeway.com

PRICES EFFECTIVE AUGUST 1998

Sun	Mon	Tue	Wed	Thur	Fri	Sat
			19	20	21	22
23	24	25				

Items & prices in this ad are available at your local Safeway store. No sales to dealers, restaurants or institutions. Same in retail quantities only. Classifieds & some items may be limited and subject to availability. Not responsible for typographical or graphical errors. We reserve the right to correct all printed errors. ©1998 Safeway Stores, Inc.

BBQ Picks



Beef Ribeye Steak

Bone-In. Valu Pack,
4 steaks or more.
SAVE up to \$2.11 lb.

2.88
lb.



Stagg Chili with Beans

15-oz. cans.
Assorted varieties.
Limit 2.

2 \$1
for 1
Safeway Club Price



Golden Ripe Cantaloupes

Grown in California.
SAVE up to \$1.58 on 2

2 \$1
for 1
Safeway Club Price



Now the savings are in the Card!

ST. MICHAEL'S LUTHERAN
EARLY CHILDHOOD CENTER
6700 NE 29th and DEKUM

3-YEAR OLDS MEET TUESDAYS
AND WEDNESDAYS
4-YEAR OLDS MEET MONDAYS,
WEDNESDAYS AND FRIDAYS

FOR FURTHER INFORMATION
CALL 282-0000 OR 281-2026
QUALITY EDUCATION IN A
CHRISTIAN ENVIRONMENT