

CONCORDIA NEIGHBORHOOD



NEIGHBORHOOD NEWS & EVENTS

Kenton

Kenton was recognized as the Neighborhood of the Year by the Mayor's Office. They were the recipients of the "Spirit of Portland" award given out last Fall. Residents of Kenton were praised for their spirit of cooperation. They've taken on many issues in the neighborhood, including cleaning up intersections and illegal dump sites. The neighborhood also welcomed the siting of a new Multnomah County jail.

Pearl

Come and watch an outdoor movie showing on the side of a building. Bring a lawnchair, food and refreshments. On August 22nd, the Pearl Neighborhood is hosting this entertaining event, showing "Priscilla: Queen of the Desert" at dusk on the side of the Dehen Knitting Building. This is a fund-raiser for the Pearl District and a chance for some family fun. Other city neighborhoods in Seattle, Berkeley and Boulder have tried this with much success.

Hollywood

The Green Neighborhood Network (GNN) is a partnership created to enhance the communities environment. The Hollywood business district and surrounding NE. Portland neighborhoods are GNN's target area. It is a two - year effort to build on environmental programs of local governments, Pacific Power, and non-profit groups in the areas of energy efficiency, recycling, water efficiency, neighborhood tree planting, transit, pedestrian and bicycle activities, and more, to create a resource efficient community. GNN will be at the Hollywood Farmers market on September 19th. Call 823-7725.

Cathedral Park

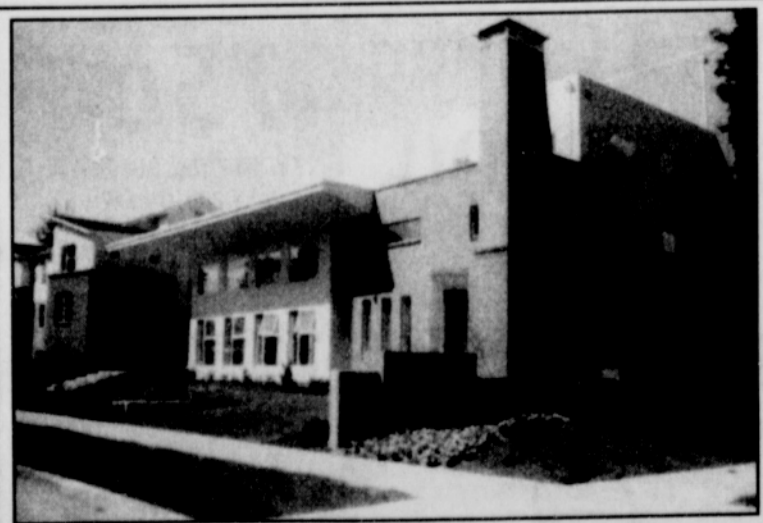
North Beach is the last underdeveloped corridor of land along the Willamette River inside the City of Portland. One hundred seventy-five acres of land, North Beach stretches two miles from the University of Portland to Cathedral Park under the St. Johns Bridge. Ripe for development, North Beach is an undiscovered river front asset for the entire metropolitan area. The best view is from the Willamette Boulevard bridge over the railroad cut. You can see the future Willamette Cove Park to the right (west).

Sabin

To better meet the needs of customers and the community, Nature's Fresh Northwest is moving from its current location on 24th and NE. Fremont, to 3535 NE. 15th. The relocated store will open in the spring of 1999. It will be significantly larger than the current store and will also offer greatly expanded off-street parking. Nature's has a social mission to help people enjoy healthful eating and for people to vote with their purchase for socially and environmentally responsible food production and distribution.

Alameda

The Alameda Community Association is committed to promoting understanding and acceptance of all people. They created a Statement of Unity three years ago to say that their neighborhood welcomes and values all people. Alameda's Board has decided to sponsor and attend an evening of Diversity Training. They have asked the Metropolitan Human Rights Center to provide a night of training to the Alameda Community on October 26th. The two and a half hour session will be fun and eye opening. Call 284-1314.



Concordia University has a new 245-bed residence hall. The \$4.9 million project has enabled Concordia to fulfill its long held objective of enriching the campus community by welcoming about 200 more students who wish to reside on campus. Neighbors were invited to tour the dorms and celebrate this landmark achievement. "In the past, we've had to find other housing for students who would have preferred to stay on campus. The addition of the new residence hall will not only create the student housing we sorely need, but also result in a more diverse student mix that is certain to make campus life richer for all of us," says Dr. Mark Wahlers, Vice President of Enrollment and Student Services.)

CONCORDIA CHAIRPERSON'S ADDRESS:

BY J.C. KIZAK

Concordia Neighborhood runs from NE. 42nd to NE. 22nd (east to west) and from Columbia Boulevard to Prescott (north to south).

Concordia features the Kennedy School (NE. 33rd just north of Killingsworth), a Memenamins Pubs & Breweries' neighborhood complex: gym; soaking pool. Concordia Neighborhood Association (CNA) and many individuals in the neighborhood expended a great effort to resurrect the Kennedy School; CNA gained the dedicated use of our own community room for the next 10 years.

The association currently uses this space for our monthly neighborhood association meetings, for board meetings, and for our various committee meetings. We acquired used furnishings through various sources including Nike and the City of Portland; we've allocated some of our funds for ongoing maintenance of

the room. The room can also be reserved and rented for other community gatherings; we have a sliding schedule of fees depending on the proposed use of user.

Much of the planning and work for our neighborhood activities is completed by various committees. We staged both a general clean-up and a hazardous waste clean-up this year. CNA participated very successfully with a tour and potluck for NUSA conference visitors earlier this year. Concordia has some old trees, e.g. shady Ainsworth Blvd., but is also actively replanting an urban forest through Friends of Trees; Maggie White, co-chair and chair for this project for the past two years, is also CNA's Treasurer. Friends of Trees honored her this year as Neighborhood Coordinator of the Year.

Our Social Committee neighbors organized our Saturday Farmer's Market and ran our annual Concordia picnic at Fernhill

Park. Later this month, August 23rd, we expect a huge crowd at Fernhill Park for the Oregon Symphony concert.

The Livability Committee neighbors drafted the community room agreements, got them approved, then took on the responsibility for maintaining and renting the room. At our September general membership meeting, Safety Committee neighbors will present their proposal for enhancing neighborhood safety. The Land Use Committee again has a chair and will be handling those activities. CNA's board lack several members, but we are functioning; certainly, we'd like a few more good neighbors to become involved. And thank you, thank you to everyone who has been pitching in!

Concordia has a large pool of neighbors and business people who may not participate regularly at meetings but who are fully involved in promoting our neighborhood, e.g. Sabin CDC is actively involved in

the Alberta Streetscaping project and spearheaded our Alberta Street Fair. We have art galleries, a vintage video shop, ethnic restaurants. We have murals - check out the most recent effort organized by AmeriCorps volunteers on 42nd & Killingsworth; also, the mural in progress at Guardino Studios (corner of 30th & Alberta).

We celebrate diversity in our shops, churches, schools (Concordia University is one of our good neighbors!), restaurants, houses and neighbors. While we aren't one big, happy family, more and more, we are cooperating as neighbors to improve this space we call home, Concordia Neighborhood. If you are one of our Concordia neighbors, do consider a more direct involvement in some of our activities; if you live elsewhere in Portland, come visit; we're shaping ourselves into another great corner of Portland.

CONCORDIA UNIVERSITY

Change
CHRISTIAN

Undergraduate Majors

Biology
Environmental
General
Molecular
Pre-Medical
Pre-Physical Therapy/Sports Medicine

Business Administration
Accounting & Financial Management
Economics
Environmental Management
Health Care Management
Human Resources Management
International Business
Marketing
Nonprofit Management
Small Business Entrepreneurship
Chemistry
Director of Christian Education (DCE)

Education
Early Childhood
Elementary
Middle School
High School
English
Health and Fitness Management
Humanities
Interdisciplinary Studies
Psychology
Social Science
History
Political Science
Psychology
Sociology
Social Work
Theatre

Theological Studies
Apostolic Ministry
Church Staff
Pastoral Ministry
Campus Activities
Chi Beta Chi (Business Club)
Concordia Choir
Concordia Handbell Choir
Concordia Jazz Ensemble
Epsilon Pi Delta (Professional Church Workers)
Missions Club
Poetry Club
Psychology club
Sigma Tau Delta (English Honor Society)
Intramural Sports
Christian Life Ministry
Residence Hall Association
Concordia Corps (Community Service)
The Promethean (Literary Arts Journal)

Intercollegiate Athletics (NAIA):
Men's Soccer, Men's Basketball, Men's Baseball, Women's Soccer, Women's Volleyball, Women's Basketball, Women's Fastpitch

At our small university, **begin.** **again** People **discover** a place to grow in a setting strengthened by values and ethics.

happen. **Minds** stretch. **start of begin**

take hold and make their way toward reality. **make it happen** at Concordia University.

2811 NE Holman Street • Portland • Oregon • 97211-6099
1-800-321-9371 • <http://www.cu-portland.edu>

PORTLAND • OREGON