

BIGGER

"The interior is as delightful as any luxury car's and the room is great for hauling a lot of folk."

That classic British SUV, the Range Rover, took second position on our poll. And despite the fact that we all couldn't rate the Land Cruiser on the road, the redesigned Toyota SUV pulled a respectable third place. Rounding out the list is the GMC/Chevrolet Suburban.

But the bottom line is that all the entries on this list are solid, credible and reliable. So, if bigger really is better for your driving needs, you've got a hefty, fast-growing list of models from which to choose.

Lincoln Navigator

It's been called the "Lincoln Town Truck," and in some ways, that isn't a bad comparison. The Lincoln Navigator is just about as big as you can get on four wheels. But it's more than just roomy. This full-size sport-ute delivers all the creature comforts you'd expect from a luxury sedan. The list is a long one, and takes in everything from heated leather seats to a studio-quality sound system. The Navigator is based on the enormously-popular Ford Expedition, and they do have many basic features in common, including their optional four-wheel-drive powertrain. Yet "Lincoln has done a great job giving Navigator a distinctive personality as compared to the Expedition," stresses *AAOW* Editor

Range Rover

You don't need a stiff upper lip to appreciate the Range Rover. With four-wheel drive a standard feature, it is to many the ultimate off-road machine. Restyled a few years back, today's Range Rover is a far more stylish vehicle than the model many Americans have come to know. It's far more stable, especially in aggressive highway driving. On-road or off, this vehicle gets you where you're going with style and elegance. *AAOW* Senior Editor Blair Walker finds the Range Rover "has an amazing ability to absorb bumps and jolts without transmitting them into the passenger compartment." Excellent towing capacity is another one of the Range Rover's many attributes.

Toyota Land Cruiser

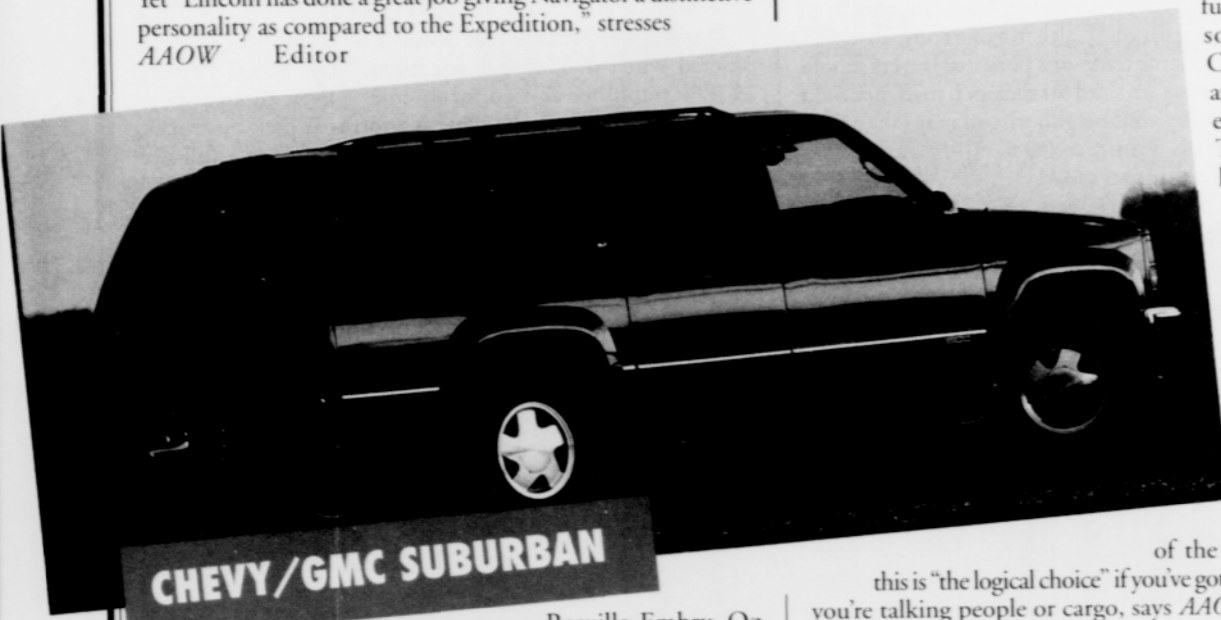
We admittedly have to wonder how the Toyota Land Cruiser might have fared in our poll of *AAOW* editors had more of us had an opportunity to spend some serious time behind the wheel of this redesigned SUV. Even so, the appeal is instantaneous for *AAOW* Editor Blair Walker, who sighs, "I love what I see." The new model suspension has been redesigned to give a more car-like ride, yet it "still has serious off-road credentials," adds *AAOW*'s Rosville Embry. Larger, heavier and more powerful than its predecessor, the '98 Land Cruiser is powered by an all-new 4.7 liter V8 engine, the first Toyota-badged vehicle with a V8.

Chevy/ GMC Suburban

Big, bigger, biggest; you'd have to buy a bus to get more room than the Suburban. It's not nearly the most sophisticated

of the full-size SUVs, but

this is "the logical choice" if you've got a lot to haul, whether you're talking people or cargo, says *AAOW*'s Winfred Cross. And at a base price of just \$22,239 (for the Chevy-badged model), this is the choice of bargain hunters looking for maximum space on a minimum budget. Suburban offers a wide range of powertrain options, too, letting you pick just the right package for your personal needs, whether you're coaching the kids or hauling a pair of thoroughbreds. "The Suburban isn't much to look at inside or out, but it does the job," says Jacqueline Mitchell, *AAOW*'s executive editor. "This plain-Jane of the bunch is comfortable and offers a lot of extras at an attractive price."



CHEVY/GMC SUBURBAN

Rosville Embry. On the outside, Navigator is differentiated by its bold, "waterfall" grille, with the Lincoln logo mounted dead center, and plenty of chrome. It also comes with plush - standard - leather seats and walnut trim.

The Navigator has proved to be Lincoln's biggest hit in years, attracting the type of affluent, younger buyers who normally buy import brands like BMW, Lexus and Mercedes-Benz. One thing's certain, you'll get plenty of room for passengers and cargo, notes *AAOW* Senior Editor Blair Walker. The Navigator is "nearly big enough to qualify for its own zip code."



Between her law courses and her responsibilities as Miss Black Houston, Sheila Jones is always moving. Luckily, her 140-horsepower Eclipse RS is designed to keep up with a fast-paced lifestyle.



Drivers have voted with their checkbooks, making the Eclipse more popular than the Acura Integra, Toyota Celica, Nissan 240SX and Honda Prelude.* Sorry, guys, we get the crown.



Press a button in the Eclipse Spyder GS-T, and the fully-lined power cloth top and glass rear window vanish. Switch on the 210-peak watt premium audio system. Adjust the leather-trimmed sport seat. And wave good-bye to the crowd.

Judged America's most popular import sport coupe.
(Would you want to drive a runner up?)

Is it any surprise that we blasted past the competition? The other import sport coupes can't match our 210-horsepower[†] turbo engine. Our available all-wheel drive. And our hard-core, haute-couture aerodynamics. Call us at 1-800-55MITSU to learn more. Or check out our web site at www.mitsucars.com Oh, by the way, we know the Eclipse flies, but we encourage you to keep your wheels on the ground. And please, wear your safety belt.



Eclipse coupe RS starts at \$15,740. Eclipse coupe GS-T shown MSRP \$21,960, plus \$1,100 destination, including Alaska. Excludes tax, title, license, registration fee, dealer options and charges. Price and vehicle availability may vary. Actual prices set by dealers. *Based upon Poll Company First Quarter 1998 Model Year new vehicle registrations. †GS-T and GSX models only. ‡With the automatic transmission.