

METRO *Life*

The Portland Observer

SECTION B

Community Calendar

Book Signing

Derrick Bell, author of *Afrolantica Legacies*. Bell will be offering a book signing and reading at Reflections bookstore on Sunday, May 17th at 2 PM. The book is a series of essays on some of the most controversial issues that have dominated American politics since the civil rights movement of the 1960's. Call 288-6942.

Free Women's Clinic

Women, have you wondered what natural health care can do for you? Now you can get a free check-up and learn about naturopathic health care on Saturday, May 16th from 9 AM to 1 PM at Natural Health Centers East. Call 255-7355 to reserve your appointment.

Run/Walk

Get a running start on the racing season at Milwaukie's Run/Walk for the Challenge on Saturday, May 16th. The event features a 10k Run, 5k run, 5k Walk and a 1/2 Mile Kids Run. Highlights of this year's run include a visit from Olympic Medalist, Grete Waitz. Call 652-9036.

Learn To Swim

Summer Swim lessons begin June 15th with a week long "Free Learn To Swim" Lesson offered at most Portland Parks pools. Registration for this free session is walk-in only on Saturday, June 13th from 8-11:30 AM at your Portland Parks neighborhood pool. Call 823-2525.

Reduce Juvenile Crime

The Multnomah County, Children and Family Commission and Law Enforcement Agencies will join forces to strategically plan to reduce juvenile crime. The workshop event will be on Wednesday, May 27th from 7-9 PM at the Westminster Presbyterian Church. This is a great opportunity for anyone who is concerned about the safety of our communities and the future of our kids. Call 248-3701.

Women's Health

In Other Words Women's Books and Resources will host two local practitioners of Chinese medicine for an informative, hands-on evening as part of our ongoing series on women's health. Concentration will be on health issues of particular interest to women such as fibromyalgia, stress, menopause, etc. The 20 minute presentation will be followed by basic demonstrations on willing audience members. Call 232-6003.

TechConnect

The Portland Chamber of Commerce will be offering a monthly program exploring solutions to business challenges through the use of technology. The topic is entitled, "Ecommerce: when will it happen to me?" The cost is \$5 to members and \$7 retail. Call 228-9411, ext.239.

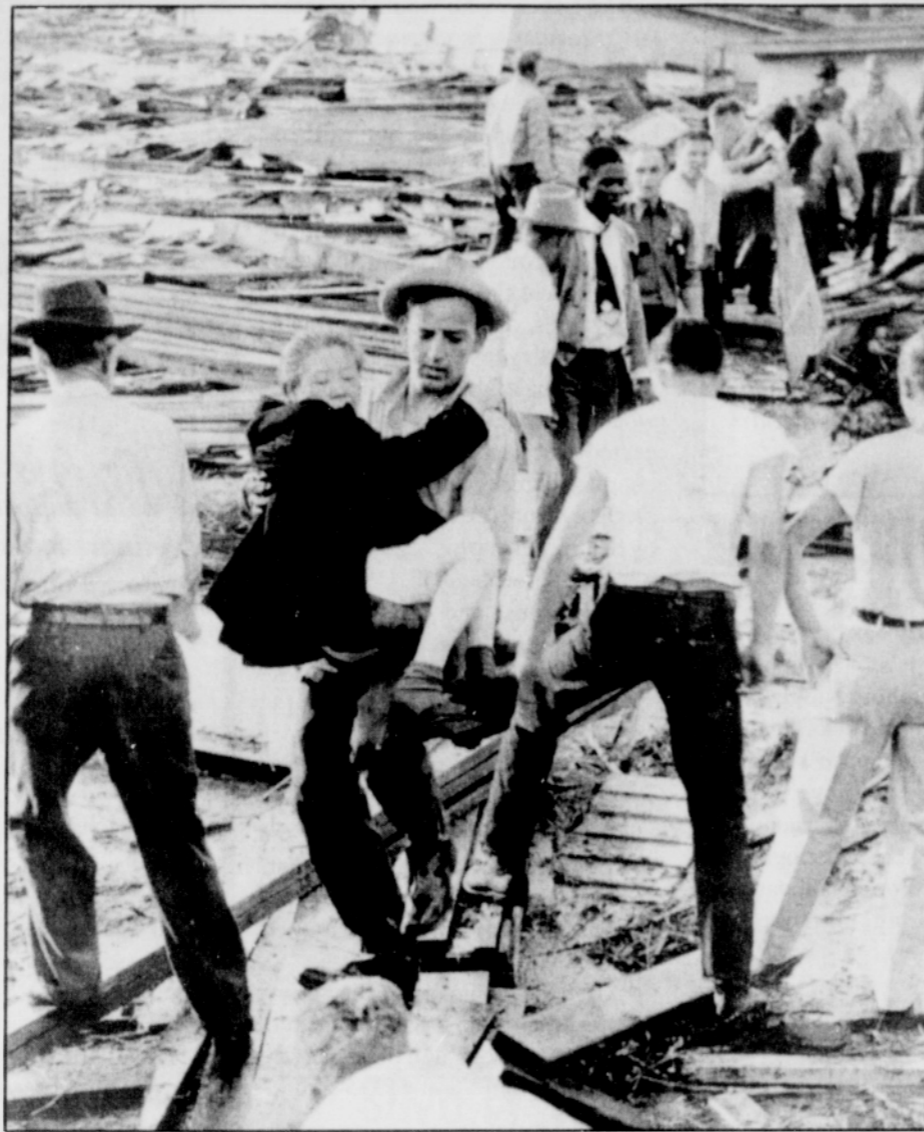
Memorial Service

A memorial service for Eldridge Cleaver will be held on Saturday, May 16th at 4 PM at Bethel AME Church (5828 NE. 8th). It will be sponsored by the Earth and Spirit Council. Eldridge Cleaver, a former Black Panther leader turned minister, passed away recently in California.

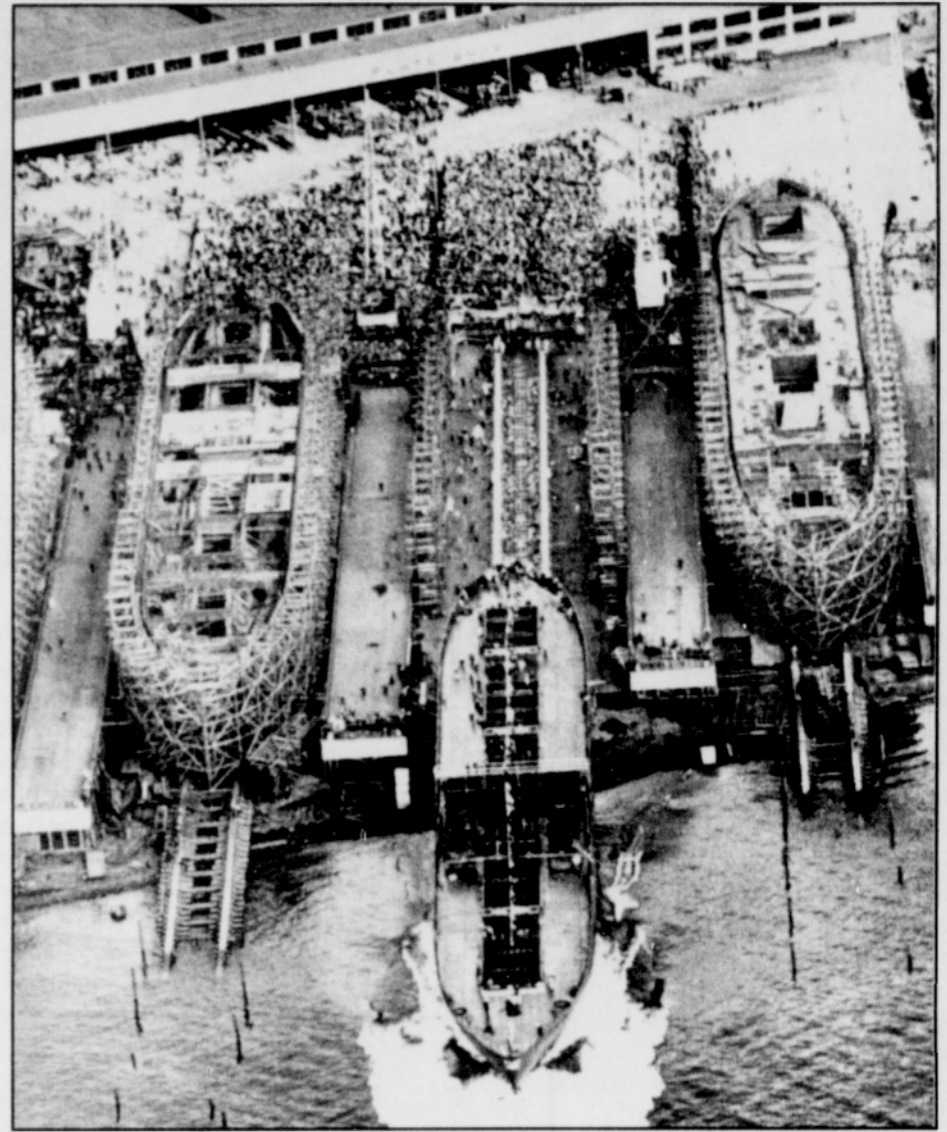
Economic Commission

The Clackamas County Economic Development Commission will hold its monthly meeting at Room H 108 in the Clackamas Community College Harmony Center on Thursday, May 14th, from 7:30 - 9:30 AM. The meeting will focus on legislative issues, the Business Development committee work plan, and community engagement efforts. Call 650-3238.

Photo Exhibit Commemorates History of Vanport



Unidentified woman carried by Carl Downey is rescued from Vanport flood. May 31, 1948



Ship launching & arrival.

The community of Vanport was once the second largest city in Oregon. Named for its location between Vancouver, WA and Portland, Or, the city was built to house the thousands of workers recruited for the World War II shipyards. On Memorial Day, 1948, the Columbia River flooded the city of Vanport and erased a thriving community. The Oregon Historical Society presents a photograph display on Vanport in the *PORTLAND!* exhibit, commemorating this successful wartime housing project and the tragedy that pulled neighboring communities together. **Vanport** opened May 2nd and continues through September 20, 1998.

"Beyond the loss of life, the tragedy of the Vanport Flood was in the loss of community," says Chet Orloff, executive director of OHS. "Through the OHS collections, including photographs, oral histories, film footage, and radio broadcasts, we remember and celebrate the Vanport community and continue to keep its spirit alive."

The Oregon History Center is located at 1200 SW Park Avenue in downtown Portland. Museum Hours: 10-5, Monday -Saturday, 12-5 Sunday (Open Mondays through August 17th).

Effective July 1st the Museum and Research Library will be open on Thursdays until 8pm. Admission: \$6.00/Adults, \$3/Students with ID, Children 6-12 free. Free to OHS Members and children five and under. For more information, please call 503-222-1741 or visit the OHS Web site at <http://www.ohs.org>.

"Piedmont/City, Debate Rosemont Future"

The Piedmont Neighborhood Association and city of Portland representatives' discussion of the future of the Rosemont School property has turned into an angry debate.

The Portland Development Commission purchased the 7.6 acre former Catholic school from the Sisters of the Good Shepherd on April 14. They had told Piedmont representatives that they planned to create a "master plan" for the property's eventual use, and to include the neighborhood group in the process.

Some Piedmont leaders, including president Tom Markgraf, hoped the land could be used as a satellite campus for the LaSalle Catholic high school of Milwaukie.

At an April 30 Piedmont meeting, in response to questions raised by an April 15 Portland Observer article, PDC's Baruti Arthuree said that while the historic old convent building might be put to another use, the land around it was purchased for housing development. Piedmont representatives accused the city of betrayal and dishonesty,

while Arthuree and others said Piedmont hasn't listened to what they have been saying all along.

The association called on the city to study a "full range of uses" for the site. "If it comes down to housing, that's fine, as long as everything is looked at," Markgraf said.

He added, "I stood before you at the PDC hearing, and at our meeting last month, and complemented the staff. I have to be concerned now. I have heard from PDC and people in City Hall that there's a city agenda."

Arthuree replied, "We have been clear in all our discussions with the City Council. If we were not interested in building housing there, we would not have purchased the property."

Steve Rudman, director of the Bureau of Housing and Community Development, said there was a "wide range" of choices as to the type and design of housing that could be developed on the property. This prompted one resident to comment, "In the future you

Is Major League Baseball A Step Closer To Portland?

By NEIL HEILPERN

Major league baseball may be a step closer to Portland this week when a list of improvement recommendations from the mayor's civic stadium advisory committee is reviewed by Metro Regional Government's Metropolitan Exposition and Recreation Commission (MERC).

MERC is expected to act Wednesday on the eight page report which includes concepts that would be part of a two stage plan to entice a major league team to Portland, according to Mayor Vera Katz's special projects manager Keith Witcosky.

MERC, which operates the city-owned stadium, will discuss the issue 3 p.m. on May 13, in room C120-121 at the Portland Convention Center.

Phase One would put approximately \$45 million worth of improvements into Civic Stadium to make it more attractive for professional soccer, a higher level of professional baseball, increased stadium capacity with retractable bleachers to handle larger crowds and develop more streams of revenue for expanded concourses, parking, sky boxes, restaurants, etc., he said.

"It also calls for a grass field instead of astro turf," added Witcosky. "A lot of major league sports teams won't play unless they



are on grass." He noted that before the Men's World Cup soccer games were played here last year "they spent \$100,000 to bring in grass just for that event."

"We would be modernizing what we have now," said Maria Rojo deSteffey, civic stadium manager. She said a group of citizens, called The Baseball Group, has been working independently to entice a major league team to come to town. The group includes architect John Vosmeck and sports consultant Lynn Lashbrook.

The improvements and public/private investments would create a stadium district, linking the stadium with the surrounding neighborhood, said deSteffey, and would be designed "to bring added value to both the neighborhood and the stadium."

"No timeline was mentioned in the recommendations, or specific dollar amounts associated with each item," said Witcosky. "Right now we are just talking about concept. I know they have done research to look at costs, but it is not in the report."

"The next step is to look at a timeline and find the money," said deSteffey.

"If MERC accepts the report, then the question is how to raise the funds," Witcosky

CONTINUED TO PAGE