

## Willamette University Names New President

Willamette University has named M. Lee Pelton, dean of the college at Dartmouth College, Hanover, N.H., as the University's next president. Pelton will begin his presidency at Willamette in July.

Pelton, who earned his Ph.D. from Harvard University in English and American literature, and his bachelor's degree, magna cum laude, from Wichita State University, has served at Dartmouth since 1991. Prior to his position at Dartmouth, he served as dean of students and then dean of the college at Colgate University.

In announcing the appointment, Portland attorney Henry Hewitt, chairman of both the Willamette University board of trustees and the search committee, said, "Lee was the overwhelming choice of the Willamette community and the presidential search committee. He is a special person who has demonstrated exceptional leadership skills and personal qualities. We believe that Lee is well suited to lead Willamette in the years to come, and that he will continue the improvement experienced at Willamette during Jerry Hudson's tenure as President. It is a pleasure to welcome Lee and his family to Oregon."



M. Lee Pelton, In coming Dean of Willamette University

## Tolbert Named Human Resources VP

Brenda Tolbert has been named vice president for human resources of Kaiser/Group Health, the regional nonprofit company that oversees and coordinates Kaiser Permanente and Group Health in the Northwest.

A veteran human resources leader who has worked in many industries, Tolbert has participated in numerous community projects and professional activities.

She was on a team advising Kenyatta National Hospital in Kenya on automated personnel systems, served on the American Arbitration Association's Roster Review Committee in the Northwest, and has also served on the boards of the Northwest AIDS Foundation, a county crisis clinic, and the Food Lifeline.

Tolbert, formerly executive director of human resources at Kaiser/Group Health, spent 15 years at Group Health Cooperative, including six years as vice president for human resources.

"We are pleased to welcome Brenda's sound judgment, professional competence, track record, and her sense of humor to the division's senior leadership team," said Kaiser/Group Health Chairman Phil



Brenda Tolbert VP/Human Resources Kaiser/Group Health

Nudelman and Chief Operating Officer Mike Katcher.

Tolbert succeeds Tom Williamson, who accepted a job as vice president for human resources in Kaiser Permanente's California Division. Before serving as Kaiser/Group Health vice president, Williamson was human resources manager for Kaiser Permanente Northwest. He joined Kaiser Permanente in 1977.

## Valentine For That Special Teacher

Nicki Hudson, Oregon's teacher of the year, encourages Oregonians to thank teachers who made a difference in their lives by sending them a Valentine's card.

Hudson, a math teacher at West Linn High School, received public attention when she was named 1998 Oregon Teacher of the year last fall.

"The personal messages I received from former students and parents made me feel extra special," Hudson said.

"I got to thinking of the teachers who were influential in my life.

I want them and others to feel good about what they do."

# Fabric Depot

THE LARGEST, MOST COMPLETE RETAIL FABRIC STORE IN THE WEST  
January 6 through January 20, 1998

**MAILER SALE!**  
**30% OFF**  
Everthing in the store\*

FABRIC DEPOT COUPON  
McCalls Patterns \$1.99  
\*Limit 6 per coupon • Valid January 14 - January 18, 1998

**SPECIAL SALE!**  
**2 DAYS ONLY - JANUARY 16 & 17**  
**40% OFF**  
All Fabrics  
extended hours Saturday Open 'til 9pm  
Limited to stock on hand!

**50% OFF**  
ON THESE PATTERNS  
• Butterick • Vogue  
• Simplicity • Burda

Winter Sewing Classes!  
Over a dozen topics to choose from at our Palmer Pierce Sewing School.  
sewing • quilting • home dec • wearable art • craft • teens • children • beginner • advanced  
COME IN FOR SCHEDULE OR CALL 492-9455

## Wholesale/Retail

700 SE 122nd Ave., Portland, OR 97216-6267

Our 73,000 sq. ft. facility has a 40,000 sq. ft. retail department and 33,000 sq. ft. wholesale department.

Our wholesale division carries brand name notions including:

- Dritz notions
- Coats & Clark thread & zippers
- Offroy Ribbons
- Wrights tapes & trims
- Pellon interfacing
- Gutermann thread
- Batting, DMC

We also stock a large assortment of fabrics.

We wholesale all these items by the full box or bolt at discounts from 40% to 50% off the suggested retail price. We honor VISA, MasterCard, and Discover cards.

To order call toll-free 1-800-392-3376  
Fax 1-503-252-9556

BE SURE TO CHECK OUR STORE FOR "MANAGER'S SPECIALS"

\*Discounts do not apply to special purchase or previously discounted or marked down items. 1/6 thru 1/20/98



RETAIL - WHOLESALE

700 S.E. 122nd Ave.  
Portland, OR

252-9530

Visit our website at  
www.fabricdepot.com  
1-800-392-3376

## First Callers's "Appointment's Limited"



First 2 manicures \$2.00 Next 10 \$4.00  
" Pedicures \$2.00 10 \$4.00  
" Artificial Nails \$4.00 Next 10 \$7.00

First 2 • European Facials \$5 Next 10 \$10.00  
• Waxing call for prices •

## Esthetic Institute

Mon. - Thur. 9-5

2245 SE POWELL BLVD. • 238-1793

## Communities Project Children

Continued From Front

These counties serve as laboratories for the community safety net model development. Most counties have in place safety net components, including youth service teams, family resource centers, multidisciplinary teams, service integration projects and Healthy Start programs.

U.S. politician and activist Suzanne LaFollette wrote in her book Concerning Women, "What its children become, that will the community become."

By casting this purposeful safety net initiative far and wide, Oregon communities will possess the best available tool to intervene earlier in the lives of at-risk families and provided an opportunity to prevent abuse or neglect.

Happy Anniversary  
Johnny and Thressa Huff



SAFeway FOOD & DRUG

Look For Your Safeway Weekly Shopping Guide

In Your Oregonian FOODday in the Portland Metro Area ...and save more shopping at Safeway

Enjoy Extra Savings With The SAFEWAY EXTRA In-Store Savings Guide

Available at your Safeway store.

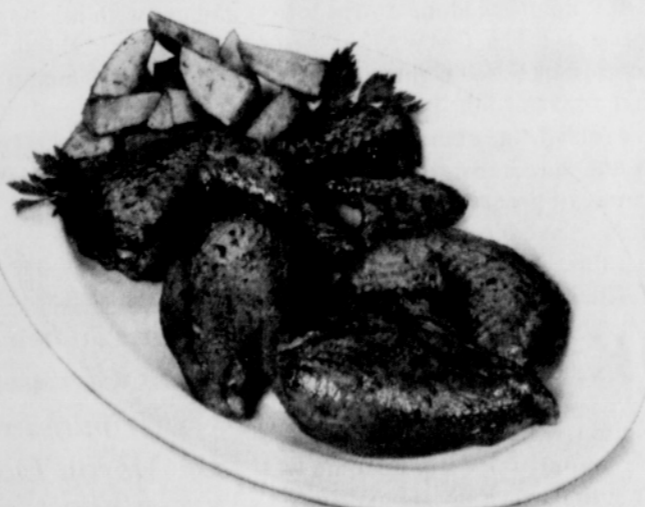
Visit Safeway's Web site at www.safeway.com

PRICES EFFECTIVE JANUARY/FEBRUARY 1998						
Sun	Mon	Tue	Wed	Thur	Fri	Sat
			28	29	30	31
1	2	3				

Prices Effective Wednesday January 20, 7am through Tuesday February 2, Midnight

Items & prices in this ad are available at your local Safeway stores. No sales to dealers, restaurants or institutions. Sales in retail quantities only. Quantities of some items may be limited and subject to availability. Not responsible for typographical or pictorial errors. We reserve the right to correct all printed errors. ©1997 Safeway Stores, Inc.

## FAMILY FAVORITES



Fresh Oregon Grown Fryers

Thrifty Pack, First 3. Washington Fryers sold in Washington. SAVE up to 61¢ lb.

58¢ lb.



Safeway Coffee

39-oz. Regular or Drip. SAVE up to \$4.01

4.98



Ovenjoy Bread

22.5-oz. White or Wheat. SAVE up to \$3.42 on three

3 for 99¢

NOBODY DOES IT BETTER FOR LESS.