

# HOME and Garden



## Site preferred for complex

Sabin Development wants to build on Killingsworth

By LEE PERLMAN

The Sabin Community Development Corporation is seeking funding to build seven new townhouses on a vacant lot on Northeast Killingsworth Street at 27th Avenue.

The non-profit corporation received an endorsement for the project last week from the Concordia Neighborhood Association, despite concerns from some residents.

It plans to seek grants from the Portland Development Commission, Multnomah County Strategic Investment Program and the state Community Services Department, according to director of property

development Jane Ediger.

Six of the units will have three bedrooms and 1,008 square feet, while the seventh will be one-bedroom and 860 square feet. They will share a common rear play area and front porch, Ediger said. They will be targeted to tenants earning less than 50 percent of median income, and will rent for not more than \$549 per month.

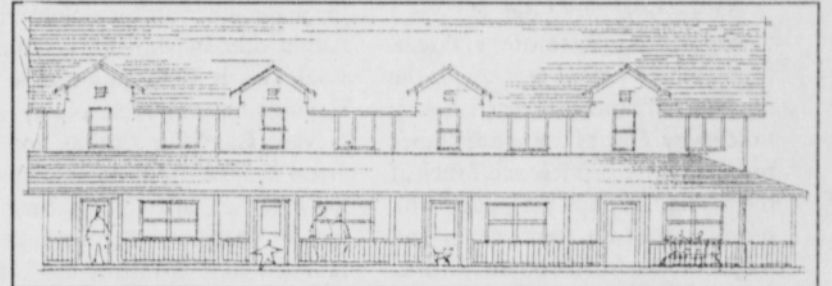
Some residents expressed concern about concentrating so many low-income tenants on a 10,000 square foot lot.

Ediger said that Sabin CDC does not rent to people with felony records.

"We're in the neighborhood, not

managing it from Lake Oswego," she said. Concordia president Pat Messinger said, "My experience, and the experience of the neighborhood association, is that Sabin CDC does a pretty good job of managing ten-

ants. They respond promptly to complaints." Concordia resident Steve McInkster added, "We've struggled for years to get anyone to do anything with that lot. I say it's great. Go for it!"



An artist's drawing of the proposed Killingsworth seven unit apartment.



(DM)—There's nothing fishy about this recipe. Whether your taste runs to swordfish, halibut or sea bass, **Grilled Summer Fish Steaks** is an easy, delicious entree. To give the steaks a sensational flavor, they briefly marinate in a savory mixture of Kikkoman Lite Soy Sauce, dry mustard, lemon juice, garlic and thyme. Lite soy sauce has less sodium than regular brewed soy sauce, yet retains all of its distinctive flavor enhancing qualities because the salt is removed after brewing. Baste the fish as it grills with additional sauce to heighten flavor and retain moistness. For easy accompaniments, grill slices of seasonal vegetables alongside the steaks and enjoy a great taste of summer.

### GRILLED SUMMER FISH STEAKS

- 2 teaspoons dry mustard
- 1 teaspoon lemon juice
- 3 tablespoons Kikkoman Lite Soy Sauce
- 1 clove garlic, pressed
- 1/2 teaspoon dried thyme leaves, crushed
- 1 1/2 pounds firm white fish steaks (swordfish, halibut or sea bass)

Combine mustard and lemon juice until smooth; gradually stir in lite soy sauce until blended. Add garlic and thyme; let stand 10 minutes. Pour mixture over fish in large plastic food storage bag. Press air out of bag; close top securely. Turn bag over several times to coat fish well. Refrigerate 30 minutes, turning bag over once. Reserving marinade, remove fish and place on grill 8 to 10 inches from hot coals. Cook 5 minutes. Turn fish over; brush with reserved marinade. Cook 4 to 5 minutes longer, or until fish flakes easily with fork, turning over occasionally.

Makes 4 servings.  
Each serving: 141 calories, 5g fat, 45mg chole., 404mg sodium, 1g carb., 23g protein.

## HINTS FOR HOMEMAKERS

Enlarge Your Home, Without Remodeling

(NAPS)—Need more space, but can't move into a new home? Storage solutions may be as close as the next room, if you stretch available space to the limit. Here are tips from decorating experts.

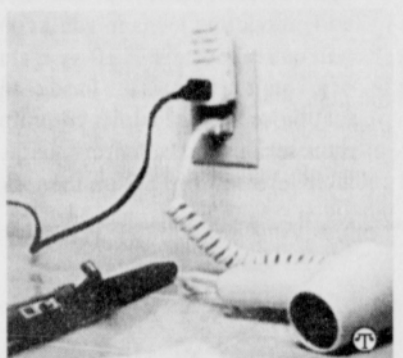
1. To tidy up a utility room, install lots of clothes hooks, including some at children's level for easy reach.

2. No matter what size closet you have, you can maximize every inch with careful planning. Think vertical and add a drawer/shelf unit (available ready-made at local stores).

3. Need an extra linen closet? An armoire in a hallway may be a solution.

4. Skirting is a popular and quick way to camouflage open shelving that's filled to the brim. Hang fabric from a rod, dowel, or sturdy wire.

5. Make your outlets do "double-duty." New Glade PlugIns



More space in the same amount of room; it's possible using clever ideas such as an extra outlet air freshener.

Extra Outlet is the only electric air freshener that comes with an extra electrical outlet built-in to give you access to all your outlet space. It helps solve outlet availability issues, and lets you to freshen the air in any room.

## Be a tree steward

Vancouver-Clark Parks and Recreation Department offers a free 10 week course teaching young people to become teen tree stewards.

The Saturday sessions start this week at the Bagley Community Center, 4100 Plomondon.

Course work will include hands-on projects, tours of nurseries and study of Vancouver's watershed areas.

In exchange for the training, students will be asked to volunteer 35 hours of service to benefit the community.

## FHA Reverse Mortgage

- ✓ Get cash out of your home
- ✓ No income qualifying
- ✓ Loan need not be repaid until home is sold or vacated
- ✓ Must be 62 years or older
- ✓ Low interest rate

This program also is known as a Home Equity Conversion Mortgage. It is a special government program for seniors.

NORWEST MORTGAGE

Sheldon Weber

(503) 697-9429

**OPENS THURSDAY!**

# FALL RV & VAN SHOW

PORTLAND EXPO CENTER • SEPT. 11-14

**OREGON'S LARGEST SHOW IS NOW EVEN LARGER!**

**Over 300 makes and models!**

Compare the state's largest selection of RVs and vans in one location and buy at special low show prices! There will not be a better time to buy Motor Homes up to \$750,000, Fifth Wheels, Travel Trailers, Campers, Full-Size Vans, Conversions, Tow Vehicles, Accessories and more.

- Fleetwood and Valley RV Center present the 60 ft. Mobile Laboratory from **THE LOST WORLD JURASSIC PARK**
- Seminars for beginners and seasoned RVers!

HOURS		ADMISSION	
Thur. - Fri.	Noon to 9pm	General Admission	\$6.00
Saturday	11am to 9pm	Children 12 & Under	FREE
Sunday	11am to 6pm	<b>Directions:</b> Take I-5 to Marine Drive; across from Delta Park. www.oloughlintradeshows.com	

**3 SHOWS FOR THE PRICE OF 1!**

Your \$6 paid admission to the Fall RV & Van Show also admits you to the Portland Fall Home & Garden Show and the Fall Boat Sale for free!

Shuttle service every half hour between Interstate & Lombard and the Expo Center. Connecting lines include #5, #75, #8 and #4.

**MORE EXHIBITS! FRESH IDEAS! GREAT INFORMATION!**

**OPENS THURSDAY!**

# Portland Fall Home & Garden Show

SEPTEMBER 11-14 PORTLAND EXPO CENTER

Save time and money by shopping and comparing hundreds of booths! Find the best selection and best deals on everything for the home and garden.

**Learn from the Experts**  
**HomeBase** presents daily seminars and demonstrations. For complete seminar listing, call 225-5555 ext. 6050.

**Huge Plant Sale**  
Now's the time to purchase bulbs, kale, perennials and much more! Over 20 nurseries participating. Sponsored by the Portland Rehabilitation Center.

**Powell's "Room to Browse"**  
Browse through the extensive collection of how-to books for the home and garden.

**Plus Much More!**

- **Two great trips**  
Win a trip of a lifetime! See Martha Stewart live in New York, or win a trip to Burbank to be a part of the studio audience of TV's Home Improvement.
- **Bonsai Society of Portland**  
Experience the ancient art of Bonsai at this inspiring exhibit and sale. Plus learn tips and techniques at daily seminars.

HOURS:		ADMISSION:		DIRECTIONS:	
Thurs. - Fri.	Noon - 9p.m.	General Admission	\$6	Take I-5 to Marine Drive exit, next to Delta Park.	
Saturday	11a.m. - 9p.m.	12 and Under	FREE	www.oloughlintradeshows.com	
Sunday	11a.m. - 6p.m.	No admittance one hour prior to closing			

**3 SHOWS FOR THE PRICE OF 1!**

Your \$6 paid admission to the Portland Fall Home & Garden Show also admits you to the Fall Boat Sale and the Fall RV & Van Show for free!

Shuttle service every half hour between Interstate & Lombard and the Expo Center. Connecting lines include #5, #75, #8 and #4.

Sponsored by Home Builders Association of Metropolitan Portland