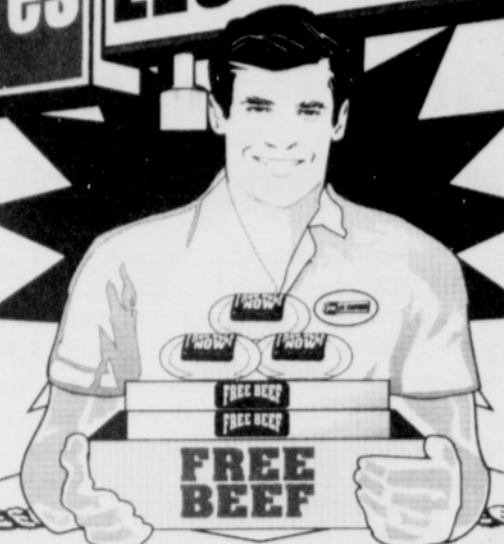


"FREE BEEF" "FREE BEEF" "FREE BEEF" "FREE BEEF" "FREE BEEF" "FREE BEEF" "FREE BEEF" "FREE BEEF" "FREE BEEF"

# Tires LES SCHWAB

# FREE BEEF

## WITH THE TIRES YOU BUY



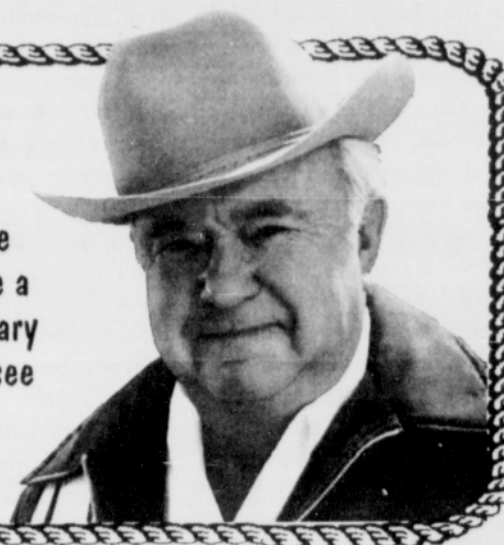
**FEBRUARY MEANS... FREE BEEF!**

**\$7.50**  
worth of beef with 2 new passenger or pickup tires or 4 retreads.

**\$15.00**  
worth of beef with 4 new passenger or pickup tires.

"What began over 30 years ago as a way to support the farmers and ranchers of the northwest has now become a 33 year tradition. All over Les Schwab Country, February means Free Beef with the tires you buy wherever you see the Les Schwab Sign."

*Les Schwab*



**FREE BEEF! \$15<sup>99</sup>**

High quality inspection procedures and workmanship with pride make this all season radial an excellent value for your money - plus, we warranty them like our new tires.

SIZE	SUPERMARKET PRICE	SIZE	SUPERMARKET PRICE
P155/80R-12	15.99	P165/70R-13	22.12
P155/80R-13	21.19	P175/70R-13	24.21
P165/80R-13	23.21	P185/70R-13	28.01
P175/80R-13	25.76	P175/70R-14	29.56
P185/80R-13	27.69	P185/70R-14	30.28
P185/75R-14	28.83	P195/70R-14	32.09
P195/75R-14	31.12	P205/70R-14	36.66
P205/75R-14	33.76	P215/70R-14	39.07
P205/75R-15	32.97	P205/70R-15	37.17
P215/75R-15	36.66	P215/70R-15	40.80
P225/75R-15	38.68	P225/70R-15	43.06
P235/75R-15	38.94	P235/70R-15	43.13

**FREE BEEF! \$26<sup>94</sup>**

Featuring an aggressive design for excellent traction, this steel belted economy radial provides year round performance with a smooth ride.

SIZE	SUPERMARKET PRICE
155R-12	26.94
145R-13	27.79
155R-13	28.65
165R-13	29.82
175R-14	33.68
185R-14	35.57
165R-15	33.41
175/70R-13	35.49
185/70R-13	36.66
185/70R-14	38.46
195/70R-14	40.47
205/70R-14	42.49

**SPECIAL PRICES ON MAJOR BRAND HIGH QUALITY PREMIUM ALL SEASON RADIALS**

**\$35<sup>99</sup>**

P155/80R-13

**FREE BEEF!**

**FREE BEEF! \$29<sup>54</sup>**

This low cost all season tire offers an M&S rating plus tough steel belts for year round driving comfort.

SIZE	SUPERMARKET PRICE
P155/80R-13	29.54
P165/80R-13	31.60
P175/80R-13	32.02
P185/80R-13	33.85
P185/75R-14	35.69
P195/75R-14	36.74
P205/75R-14	38.18
P215/75R-14	40.65
P205/75R-15	39.62
P215/75R-15	41.06
P225/75R-15	43.55
P235/75R-15	45.38

**FREE BEEF! \$55<sup>99</sup>**

This Low Cost All Season Radial features outlined white letters, a smooth ride and is economically priced.

SIZE	LOAD RANGE	SUPERMARKET PRICE	SIZE	LOAD RANGE	SUPERMARKET PRICE
P205/75R-15	B	59.09	LT215/85R-16	D	83.85
P215/75R-15	B	61.85	LT225/75R-16	D	89.69
P235/75R-15	B	68.03	LT235/85R-16	E	93.19
LT235/75R-15	C	80.96	LT245/75R-16	E	96.30
P265/75R-15	B	70.24	LT265/75R-16	C	95.18
27/8.50R-14	C	74.89	8.00R-16.5	D	90.51
30/9.50R-14	C	83.11	8.75R-16.5	D	91.80
31/10.50R-15	C	89.83	9.50R-16.5	D	101.34
32/11.50R-15	C	97.00	31/10.50R-16.5	D	117.31
33/12.50R-15	C	105.61			

SIZE	SPECIAL PURCHASE PRICE	SIZE	SPECIAL PURCHASE PRICE	SIZE	SPECIAL PURCHASE PRICE
P155/80R-13	35.99	P185/70R-13	43.00	P215/60R-15	61.00
P165/80R-13	37.55	P195/70R-13	49.99	P235/60R-15	66.86
P175/80R-13	39.84	P185/70R-14	43.81	P255/60R-15	75.99
P185/80R-13	40.91	P195/70R-14	50.28	P205/65R-15	55.95
P185/75R-14	41.44	P205/70R-14	51.45	P215/65R-15	57.99
P195/75R-14	43.63	P205/70R-15	54.92	<b>Light Truck Sizes</b>	
P205/75R-14	45.33	P215/70R-15	63.58	P205/75R-15	51.23
P205/75R-15	46.74	P225/70R-15	58.75	P215/75R-15	53.62
P215/75R-15	50.25	P235/70R-15	55.50	P235/75R-15	58.98
P225/75R-15	51.87	P185/60R-14	54.91	P235/70R-15	55.50
P235/75R-15	53.59	P195/60R-15	54.96	LT235/75R-15/C	80.96
P175/70R-13	40.66	P205/60R-15	55.95	P235/70R-16	76.95

**ALIGNMENT**  
FOR BETTER HANDLING AND TIRE MILEAGE

**34<sup>95</sup> 19<sup>95</sup> 59<sup>95</sup>**

Thrust Alignment    Standard Alignment    4-Wheel Alignment

Every car should at least have a thrust alignment. It relates all 4 wheels to a common center line to insure maximum tire life and a centered steering wheel.

Over 90% of all cars built today should have a 4-wheel alignment. Most front wheel drives and some rear wheel drives have rear wheel adjustments. We invite you to ask us about it.

**STRUTS & SHOCKS**  
TO FIT YOUR DRIVING NEEDS

DESCRIPTION	CARRY OUT	INSTALLED
<b>ULTRA GAS</b> (35,000 Mile Warranty)	<b>18<sup>50</sup> EA.</b>	<b>25<sup>75</sup> EA.</b>
<b>Sport LT</b> (Lifetime Warranty)	<b>26<sup>95</sup> EA.</b>	<b>34<sup>20</sup> EA.</b>
<b>Gas Trailbuster</b> (Lifetime Warranty)	<b>31<sup>50</sup> EA.</b>	<b>38<sup>75</sup> EA.</b>
<b>VST</b> (Lifetime Warranty)	<b>34<sup>95</sup> EA.</b>	<b>42<sup>20</sup> EA.</b>

DESCRIPTION	CARRY OUT	INSTALLED
<b>Standard Duty</b> (30,000 Mile Warranty)	<b>10<sup>95</sup> EA.</b>	<b>18<sup>20</sup> EA.</b>
<b>ULTRA GAS</b> (35,000 Mile Warranty)	<b>18<sup>50</sup> EA.</b>	<b>25<sup>75</sup> EA.</b>
<b>VST</b> (Lifetime Warranty)	<b>26<sup>95</sup> EA.</b>	<b>34<sup>20</sup> EA.</b>
<b>Gas Strut Cartridge</b> (Lifetime Warranty)	<b>42<sup>50</sup> EA.</b>	<b>64<sup>25</sup> EA.</b>

Gas Strut Assembly - Call for price and appt. (Lifetime Warranty) (Backed by the Les Schwab Written Warranty)

**BRAKES**  
WE DO IT RIGHT, WE DO IT COMPLETE!

**COMPLETE REAR DRUM BRAKE SERVICE**

- High quality brake shoes
- Resurface drums
- All new hold-down return springs
- All new wheel cylinders
- Adjust parking brake
- Bleed & adjust entire system
- Free replacement 25,000 mile warranty

**COMPLETE FRONT DISC BRAKE SERVICE**

- Replace with remanufactured or rebuilt front calipers
- High quality disc pads
- Resurface rotors
- Repack wheel bearings (Except FWD)
- New front seals (Except FWD)
- Bleed & adjust entire system
- Free replacement 25,000 mile warranty

**\$135<sup>95</sup>** REAR (most cars)    **\$154<sup>95</sup>** FRONT (most cars)

**COMPLETE FRONT DISC & REAR DRUM** **\$269<sup>95</sup>** (most cars)

We also do 3/4 Ton & 1 Ton 2 and 4 Wheel Drive Pick-ups & Vans

**CREDIT... The Les Schwab Way!**

- Les Schwab Revolving Accounts
- 90 Days Same As Cash
- See Stores For Details

ALPHA 19105 SW Shaw 591-1543	BATTLEGROUND 1805 N Main (360) 687-0960	BEAVERTON 10340 SW Canyon 643-9446	BEAVERTON 15871 N Walker 690-3231	CAMAS 425 NE Birch (360) 834-1673	CANBY 333 SW 1st 266-4321	CLACKAMAS 18022 SE Hwy 212 657-4211	ESTACADA 140 SW Frontage Rd 630-4227	FOREST GROVE 2730 Pacific Ave 357-3136	GRESHAM 397 N E Burnside 666-9496	HILLSBORO 330 SE 101st 648-0551	HOLLYWOOD 30th & Sandy 231-8290
LAKE GROVE 17171 SW Barnes Ferry Rd 636-6848	LLOYD CENTER 833 NE Broadway 282-3660	McMINNVILLE 1515 N Adams 472-4668	MILWAUKIE 16685 SE McCoughlin 652-1900	NEWBERG 110 N 5th 538-1329	NORTH 82nd AVE 2010 NE 82nd 257-8571	N.W. 19th 1210 NW 19th 227-3541	OREGON CITY 183 S Bowdoin Rd 657-1235	PORTLAND 167th & Division 760-0372	PORTLAND 2140 NE Columbia Blvd 289-4559	PORTLAND 7304 SE 15th Ave 777-1447	PORTLAND NE 27th & Sandy 252-3823
PORTLAND 4105 SE Powell 788-0576	SANDY 37895 Hwy 26 668-3233	ST. HELENS 3840 Columbia River Hwy 397-0550	ST. JOHNS 5510 N Lombard 289-1956	TIGARD 1581 SW Pacific Hwy 639-7420	VANCOUVER 17th and Mill Plain (360) 254-8242	VANCOUVER 2420 NE Anderson (360) 694-1525	VANCOUVER 817 NE Monmouth (360) 693-4170	WILSONVILLE 29175 SW Town Dr Loop 682-8489	SILVERTON 911 N First 873-2966	WOODBURN 1140 N Pac Hwy 981-1875	OVER 270 Locations!

**35 METRO STORES TO SERVE YOU!!! STORE HOURS: MON-FRI, 8:00 AM-6:00 PM SAT: 8:00 AM-5:00 PM**

**Dynamic Differences workshop**

The Metropolitan Human Rights Commission will offer a free diversity training workshop, "Dynamic Differences", on Tuesday, February 18 at Volunteers of America, 2318 NE MLK Jr. Blvd in Portland. "Dynamic Differences" explores the theory of oppression, emphasizes the "goodness" within all people, and presents action steps that foster positive interactions within our community. Participants will enter into small group discussions designed to increase awareness of prejudice and oppression--engaging in exercises focused on "Learning to Target, and Being Targeted."

All Dynamic Differences workshops are open to the public.

However, it is not a workshop for mandated training. To register, call Linda Hunter, 823-5284 (TTY). If you are a person with a disability who needs accommodation, please call at least 48 hours in advance.

**February is Black History Month**

Call now to reserve advertising space, and receive special display ad rates: (503) 288-0033.