

again promises to send the competition scrambling. Power comes from either the standard 120hp 2.5L four, a 175hp 3.9L six or a 230hp 5.2L V-8, and it's available in 2WD or 4WD configurations.

JEEP-EAGLE

The new JEEP WRANGLER shares the Grand Cherokee's suspension; road ride is improved and off road-ability is still best in class. Power comes from a standard 120hp 2.4L four or an optional (standard on Sahara and Sport models) 181hp 4.0L six.

THE EUROPEANS

MERCEDES-BENZ

The folks at Mercedes-Benz are certainly not standing still, and new products on the horizon are proof. The M-Class, better known as the AAV (All Activity Vehicle) built in Alabama, and set to arrive in showrooms in the fall of '97, promises to challenge every other SUV in existence. Then there's the supercharged SLK roadster, the company's answer to BMW's Z3, going into production in '97, a road rocket of the first order.

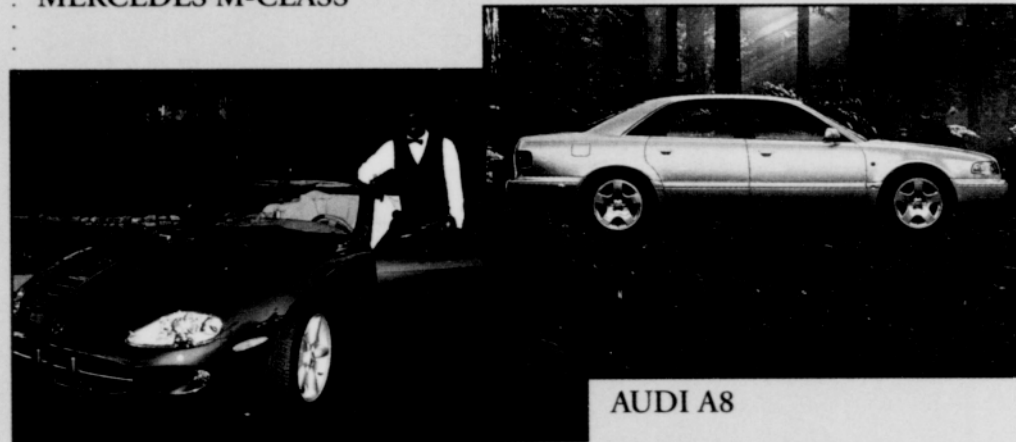
AUDI

For 1997, the Audi A4's 150hp 1.8L four is quick, and the optional 2.8L multivalve V-6, gets a jump in

horsepower --193 vs 176 -- over the two-valve-per-cylinder motor from which it is derived. Front-drive and all-wheel-drive models are offered; we strongly recommend the latter.....the A8 sedan features extensive use of aluminum alloy to save weight. It's offered in either a front-drive 230hp 3.7L V-8 or as the ultimate human transport: a 300hp 4.2L all-wheel-drive QUATTRO model....A6 is offered as a sedan or wagon with a 172hp 2.8L V-6 in a front-drive or all-wheel-drive configuration. We were impressed enough with the Quattro wagon version that it was a finalist for our Top Urban Pick in our last issue.

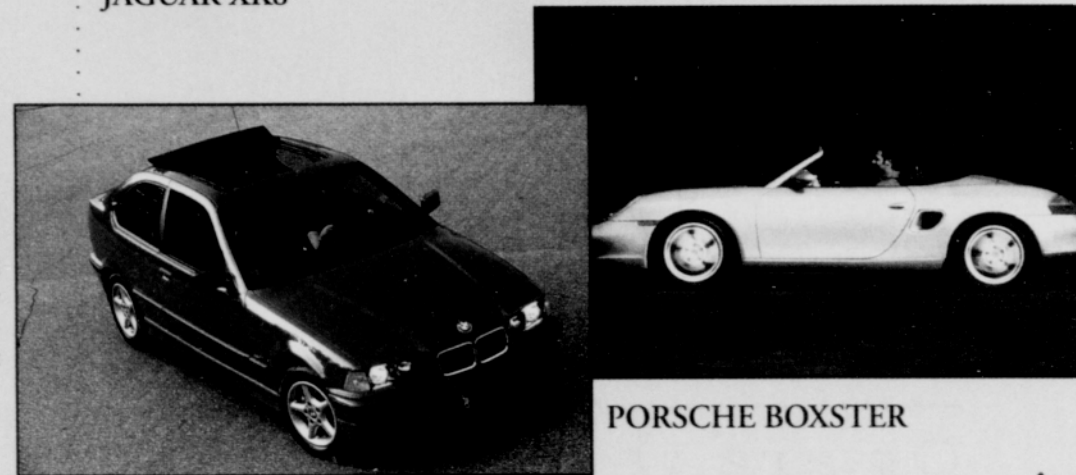


MERCEDES M-CLASS



AUDI A8

JAGUAR XK8



PORSCHE BOXSTER

BMW 318 TI

BMW

BMW for '97 can be best expressed in four characters: 540i. The 5-Series has been completely revamped from the inside out, and executives of this German company have every reason to expect very significant sales success. The 528i gets a 190hp, 2.8L six, while the awesome 540i is rocketed through air and space via a 282hp 4.4L V-8. 5-Series exterior changes are enhanced by a sleeker, rounder new look; the body is structurally stronger and the already taut suspension has been retuned. As for the Z3 roadster, the four cylinder will soon be supplemented by a stronger

six-cylinder generating 190hp, just in time to battle Porsche's Boxster and the Mercedes-Benz SLK.

JAGUAR

The most profound news coming out of Coventry is the U.S. arrival of the long-awaited successor to the XJS coupe; the XK8. The new car is making an initial impression similar to that made by the legendary E-Type roadster some 34 years ago. In fact, Jaguar's Vice-President of finance and administration, George Frame, was literally chased down a New York street by "people trying to get a closer look."

'97 VEHICLES

vision when in reverse. High Intensity Discharge (HID) head lamps are now standard.

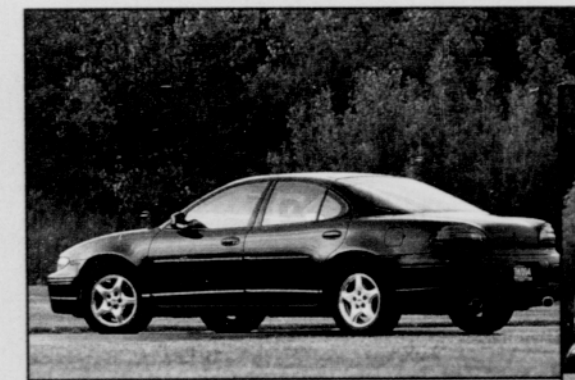
GENERAL MOTORS

CHEVROLET

Chevrolet's news for '97 can be summed up as 5th generation Corvette, the wide-appeal Malibu sedan, the new Venture mini-van and no Caprice. We haven't seen the Corvette yet, but we can tell you that its all-new aluminum LS1 5.7L V-8 generates 340hp; the latest Vette borrows exterior styling cues from the discontinued ZR-1 Corvette; and we're told that its electronically-adjustable suspension reacts quickly to changing road surfaces, lateral, braking and acceleration loads. The Chevy MALIBU is intended to take on dominant players like Nissan Altima and Toyota Camry. Base engine is a responsive 2.4L, 150hp 4-cylinder; a 155hp 3.1L V-6 is optional. Interior fit and finish is world class; the Americans seem to have finally "gotten it." Exciting? nah. Durable? reliable? You bet.....VENTURE is key to GM's quest to compete seriously in the minivan market that's currently owned by Chrysler. Venture's 3.1L V-6 serves up smooth power across a broad range; offers comparable luggage capacity to rivals Ford Windstar and Chrysler Town and Country, and features elevated "theater" seating for improved front views by rear seat passengers.

BUICK

Although the big Roadmaster leaves the Buick line-up, PARK AVENUE more than compensates; its flowing lines make it appear larger than it actually is, and we



PONTIAC GRAND PRIX GT



GMC SONOMA



CADILLAC CATERA



OLDSMOBILE SILHOUETTE



SATURN SCI

all know perception is everything. Its 3.8L, 205hp V-6 is a very refined engine. The seats offer exceptional lower back and neck support. Buick's suspension engineers have created a whole new dimension in ride quality. Top-of-the-line is the PARK AVENUE ULTRA with its standard 240hp supercharged 3.8L powerplant and luxuriously appointed leather interior. Notable features are "rain-sensing" wipers and a "heads-up" information display on the windshield.CENTURY, a Buick name dating back to 1936, finally gets a long-needed visual and performance overhaul. A 160hp 3.1L V-6 provides good power through a 4-speed automatic transmission. The 100,000 mile platinum tipped spark plugs and long-life coolant are part of its impressive mechanical repertoire.

PONTIAC

The Pontiac GRAND PRIX, from the base SE to GT coupe and sedan, provides excellent road-holding, balance and cocoon-like quiet thanks to significantly improved body structure. Base power derives from a 195hp 3.8L V-6. For real thrills, order the GTP package with 240 supercharged horses coupled with a driver programmable transmission. A well-structured interior that includes an optional "head-up" information display completes the high-performance imagery.....TRANS SPORT, Pontiac's European-inspired new minivan, may succeed in carving out a niche all to itself. It's part mini-van and part sport utility -- making it just perfect for people who can't make up their minds. Powered by a new 180hp 3.4L V-6 with total cool-