

RELIGION

Palau Team To Put Focus On Northwest

CHRISTIAN NEWS NORTHWEST

For decades international evangelist Luis Palau has taken the message of Christ to millions of people throughout the world.

In recent years, the Argentine-born Palau has felt more of a burden to do the same in his adopted country of America.

Now, Palau feels led by God to put an even stronger emphasis on reaching his home region-- the Pacific Northwest. And his team is eager and ready to receive invitations from both

large and small towns to hold evangelistic crusades.

The Luis Palau Evangelistic Association has announced "Operation Pacific Northwest," a campaign to reach a wide range of communities in the region over, at least for the next three years.

"It comes out of Luis' heart to do something in the Northwest, not only to reach people but to strengthen the Church," said Dan Owens, associate evangelist with the Palau team. He and Palau will take turns, or will in

some cases, team up, to conduct as many as 10 to 12 Friday-through-Saturday crusades throughout the Northwest per year.

Owens said each crusade could also include a youth rally, perhaps a business luncheon and a Sunday afternoon rally for Hispanic residents. Depending on the community, there might also be some related outreach on radio and TV.

Already in discussion for Oregon are crusades in Hillsboro, in tiny Parkdale near Mount Hood, and in

Seaside. In Washington, an Olympia crusade is in the works.

By the end of this month, said Owens, the Palau team plans to make available a packet of information that can be sent to people interested in organizing a crusade in their community. He said it will be based on the decades of experience the team has acquired organizing effective crusades worldwide-- including a few that have previously been held in such Northwest cities as Grants Pass and Brookings in Oregon and

Bellingham and Spokane in Washington.

But, he emphasized, "we only go where we're invited," and any such invitations should preferably represent and interdenominational cross-section of a town's christian population. When a community expresses interest in a crusade one of the first things the Palau team will consider is how broad-based it appears. If involvement by more of the community's churches is deemed

needed, that will be sought before gull-fledged crusade preparations occur.

Owens, who has been associate evangelist for Palau for more than 10 years, expects to hear from a wide range of interested Northwest communities during the coming weeks.

Representatives of towns that would like a Palau crusade should phone him at (503) 614-1500 or write him at Palau offices, P.O. Box 1173, Portland, OR 97207.

Less drug abuse among religious teens

"Just Say No" is a nice slogan for resisting negative peer pressure but there is an even better way for teens to deal with the intense pressures to use drugs: avoid having friends that you have to "say no" to.

This is just what some teens are doing according to recent research by the University of Louisville.

According to the study, teens avoid choosing friends who use drugs and spurn drugs themselves if their families are actively religious.

"This is one of many studies which indicate that church attendance is a significant deterrent to delinquent behavior in adolescents," stated Dr. David B. Larson of the non-profit

National Institute for Healthcare Research (NIHR).

Since 48% of high schools seniors have tried an illicit drug according to the U.S. Department of Health and Human Services, this University of Louisville study researched factors that might prevent drug abuse.

Focusing on students particularly at risk for illicit drugs--students who had dropped out or failed to stick to rules at a traditional high school--the study surveyed 475 teens attending a non-traditional school. Two thirds were white and one third African-American.

Students whose families were actively religious were significantly less

likely to choose friends who drank alcohol or used marijuana, cocaine, crack, or amphetamines. Since teens are usually convinced by their peers to try drugs, choosing friends who don't use drugs is a powerful way to prevent drug abuse, the study noted.

"Raising children with the practice of religion affords some measure of protection against illicit drug involvement during adolescence," noted researchers Patrick H. Hardesty and Kathleen M. Kirby.

Measures of family religious commitment included attending religious services, praying, talking about the meaning of religious holidays, and assessing the belief that "some things

are to be taken on faith."

The study also looked at family social climate, including family conflict, family cohesion, and emotional expressiveness.

Families actively practicing their religion were less conflicted with stronger family bonds.

However, even when controlling for this positive family climate, religious commitment was still strongly linked with teens choosing drug-free friends.

The study confirms finding of other research that showed lower commitment to religion was linked with higher marijuana and cocaine use, the authors noted.

Allen-Fremont Plaza Apartments naming ceremony

The GBC, Inc. Senior Housing Project will hold a ceremony to unveil its official name to Allen-Fremont Plaza Apartments and to recognize all of its development partners on November 7. The project is a \$4.5 million, three-story, 47,700 square foot affordable senior housing apartment building with 63 one-bedroom rental units, and one two-bedroom unit for the on-site manager.

This is a tax-credit project and the first done by an African-American, non-profit sponsor group in the state of Oregon. Project planning and feasibility began in July, 1994. Project financing was closed and construction began in August, 1996. The project will receive over \$2.5 million of equity for the sale of its tax credits to the nationally known tax-credit

syndicator, the Arcand Co., which is based in Portland, Oregon. Construction financing is being provided by Wells Fargo Bank, with permanent financing supplied by the Network for Oregon Affordable Housing, with a subsidized second mortgage from the Portland Development Commission.

The General Baptist Convention of the Northwest owns the site and has entered into a 50-year ground lease with GBC, Inc., to facilitate the financing and development of the project. The convention is a coalition of African-American Baptist Churches based in Oregon and Washington. The Convention is headquartered in Portland. Local members include: New Hope Missionary Baptist Church, St. Paul Baptist Church,

The Fellowship Baptist Church, The Greater Faith Baptist Church, The St. John Missionary Baptist Church, The Morning Star Baptist Church, The Mt. Gillard Baptist Church, the Paradise Baptist Church, The Vancouver Avenue First Baptist Church, and True Vine Baptist Church.

Construction is scheduled to be completed in March, 1997. Units will be available for rent to people 55 years and older with a household income not exceeding 60 percent of the Portland metropolitan median income. Rents will range from \$350 to \$410 per month.

Concerned Clergy, Inc.

On the night of August 27, 1996, approximately seventeen (17) off-duty Indianapolis Police Officers (IPD) attended a baseball game, at Victory Field, as guest of the City of Indianapolis. While at this game, these Officers, along with the then Chief of Police (Donald Christ), consumed seven (7) cases (168 cans) of beer. Upon leaving the ball game, these Officers proceeded to sexually, verbally and physically assault some of the citizens, of Indianapolis, Indiana. Their conduct including making lewd and sexual comments and gestures to females, hurling racial slurs at a Black male, and further physically assaulting a Black and a White male citizen.

This incident not only took place in the heart of downtown Indianapolis, but in full-view of approximately fifty (50) white citizens. Now, while the Grand Jury has indicted four (4) IPD Officers (only eight IPD Officers were targets of the Grand Jury), the remaining IPD Officers remain unpunished. IPD

historically is expedient in discipline its Black and Female Officers, but when it comes to their White Male Officers the discipline process is either delayed, or it is non-existent. It is very apparent to the citizens, of Indianapolis, that IPD has a double standard when it comes to not only discipline its Officers, but also how it deals with the Community. These Officers swore to uphold the law, but it appears that they are "above the law!"

We urge you to be mindful of these problems should you have the occasion to visit the Great Metropolitan City Of Indianapolis. If you have any questions or need additional information (as it relates to IPD) please feel free to contact our President, Rev. C.V. Jetter at the above listed address, or you can contact our Secretary, Margie Oakley at 317-542-9244.

"Justice Delayed is Justice Denied!!"

Respectfully, The Membership Of the concerned Clergy, Inc.

St Vincent De Paul begins annual Christmas food drive

Each year at Christmas time the society of St. Vincent De Paul provides food boxes for over 5,000 families and matches over 300 families with sponsors who "adopt" them. St. Vincent's needs hundreds of volunteers and the support of businesses to meet this need, call 238-6261 to help.

starting Monday, November 11, people in need can call 232-9797 to request a food box or request to be

adopted.

Sunday, November 17, 1:00 p.m., at St. Mary's Cathedral, Northwest 18th and Couch Streets: There will be a kick-off concert with soprano soloist Jeannie Rey Routtu and the choirs of Jesuit, Lasalle, Valley Catholic High Schools and St. Mary's Academy.

Admissions is two cans of food. For information call 238-6261.

Family Violence: Enough! Understanding Religious and Community Perspectives

On November 11-12, 1996, the second bi-annual Washington County Domestic Violence Conference, titled *Family Violence: Enough! Understanding Religious and Community Perspectives*, will be held at Valley Presbyterian Community Church located at 8060 SW Brentwood in Beaverton, OR.

The cost of attending the conference is \$40 per day, or \$70 for both days, which includes lunch and childcare.

In addition, 6 CEU's have been approved for each day. For further information, please contact Lucile Harden at (503) 281-3318, ext. 0.

The Salvation Army expands winter shelter services

Harbor Light seeks donations for new day shelter for homeless families, beginning November 1-- Homeless families, including men, women and children, can escape freezing cold and rain through a new day shelter program provided by the Salvation Army Harbor Light starting November 1. This is the first time Harbor Light is offering winter day shelter for homeless families, which was established in partnership with Multnomah County. Harbor Light expects most families seeking day shelter will be homeless women and their children, who face a critical shortage of shelter.

The program expands winter shelter services offered by Harbor Light, which also will provide winter night shelter for homeless men and women starting November 1.

Donations Needed--The Salvation Army is in need of donations, including items for its new family day shelter program:

- Books for a children's lending library, and toys
 - 10' by 10' area rug for children's play area
 - Changing table and diapers
- For its new shelter program:**
- Blankets, sleeping mats and pillows

The public can contact The Salvation Army Harbor Light, 239-1259, for donations/volunteer information.

Major Neal Hogan, director of Harbor Light, can provide insight on the critical need for day shelter for homeless families, and how the public can help women and children in need.

Winter shelter programs run November 1, 1996 - March 31, 1997, seven days a week. The day shelter begins at 9 a.m. - 5 p.m. and the night shelter at 8:30 p.m.

The Salvation Army harbor Light is at 30 SW 2nd Avenue in downtown Portland.

The Salvation Army expects to assist an additional 350 people through its winter day shelter program. Winter shelter services are on first come first served basis, and include sleeping space and restrooms under 24-hour security watch, referrals for alcohol and drug treatment, and referrals for housing services. Meals and case management also will be provided to those in the day shelter program. Families or persons interested in winter shelter availability at Harbor Light can call the Multnomah County winter shelter access number, 721-1500.

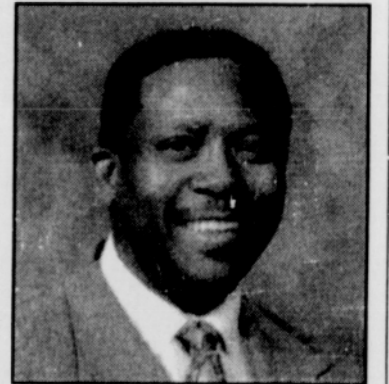
Advertise In
The Portland Observer
Call 503-288-0033

Cox Funeral Home

2736 N.E. Rodney, Portland, Oregon (503) 281-4891

"Before You Must Make a Decision"
Inspect the Beautiful Cox Funeral Chapel

Planning your funeral is our first consideration. Equipped to serve all religions, races, veterans and fraternal organizations.



Jerome Tanner
Funeral Director

VANN & VANN FUNERAL DIRECTORS

"Where Courtesy is a Tradition"
503/281-2836

Newly remodeled & landscaped

Privately owned & operated since 1954

Two licensed funeral directors and embalmers

Female Attendant

Cleodis D. Vann Jr.,
Mortician

5211 N. Williams Avenue
Portland, Oregon 97217

Free adoption seminar
Plan International Adoption Services
Friday, November 15, 1996 * 7-9 p.m.
Providence Hospital, Amphitheater Room
4805 NE Glisan, Portland

Information will be given on our various adoption programs:

- Many infants & children await adoption!
- China - infant and toddler girls
- India - infants, 6-7 months on arrival
- Vietnam - infants & children
- Latin America - infants & children
- Liberia - children
- Eastern Europe - infants and children
- U.S. Minority Infants - newborns
- U.S. Special Needs Children

For more information please call:
Plan international Adoption Services (503) 472-8452 McMinnville

Trinity Episcopal Cathedral Presents
October Vespers And healing Service
with special intentions for those affected
in any way by HIV/Aids Disease

Sunday November 10th, 1996
5pm Healing and Vespers Service
6pm Reception to follow...
(hors-d' oeuvres & beverages served)

Deacon Chris McMnus, Homilist

Chris Mcmanus will be ordained to the permanent deaconate on December 7th, 1996, for the Diocese of California at Grace Cathedral in San Francisco. She has been active in the San Francisco AIDS community for five years. She has served as a board member for Shanti project, a s a volunteer with Shanti and with the San Francisco AIDS Health project, and has appeared on CBS Sunday Morning speaking about care giving in the AIDS Pandemic. Currently she is volunteering with Kairos for Caregivers, facilitating a support group for employees of an AIDS service organization.

Trinity Episcopal Cathedral is located on the corner of NW 19th Avenue and Everett Streets (the church with the red doors) and is served by several bus lines. The church is accessible to the physically challenged. For further information please contact the Cathedral office at 222-9811.