

What is an American?

Three student essays from Albina Youth Opportunity School.



See Metro, page B1.

702 No Doubt

Meet 702, three brilliant new stars lighting up the R&B scene like a Vegas slot machine.



See Entertainment, page B3.

Mexican Pre-Columbian Art
Explore the artwork that existed before Columbus.



Observador inside.

The Portland Observer ^{25¢}

THE WEEK IN REVIEW

Congress authorizes King memorial

The U.S. Congress has passed legislation authorizing Alpha Phi Alpha, the nation's oldest African-American fraternity, to begin a national fund-raising campaign and design competition for a memorial to Rev. Martin Luther King, Jr. After 12 years and rejection by four previous Congresses, the bill passed unanimously in the House and then slipped through the Senate quietly October 3 as part of the Omnibus Parks and Public Lands Management Act.

World hunger map

Fifty years after Brazilian writer Josue de Castro wrote his hard-hitting Geography of Hunger, the leaders of nearly 200 countries are planning to draw up a world map of hunger in order to wage a more effective battle against the problem, reports IPS. The World Food Summit to be held from November 13-17 in Rome will outline the location of the half of the world, which in de Castro's words cannot sleep because of hunger, and which keep the other half from sleeping from fear that the hungry half will "awaken."

Persian Gulf chemical search

The Pentagon will notify some 20,000 U.S. Gulf War troops that they may have been exposed to chemical weapons in the destruction of an Iraqi ammunition dump, defense officials say. The new figure would greatly expand the search for possible victims from a blast cloud containing Sarin and Cyclosarin nerve agents from the Kamisiyah dump in southern Iraq in March 1991.

Clinton sets 1999 as NATO target

President Clinton set 1999 as a target date for admitting new members to NATO, saying the Iron Curtain must not be replaced "by a veil of indifference." The United States is sympathetic to the request by most former Soviet satellites since the collapse of communism in 1989 to join the alliance but is wary of alienating Russia. NATO ministers will meet in December to pave the way for an alliance summit in 1997 that would name the first candidates for membership and lead to the start of negotiations.

Dozens dead in Venezuelan prison fire

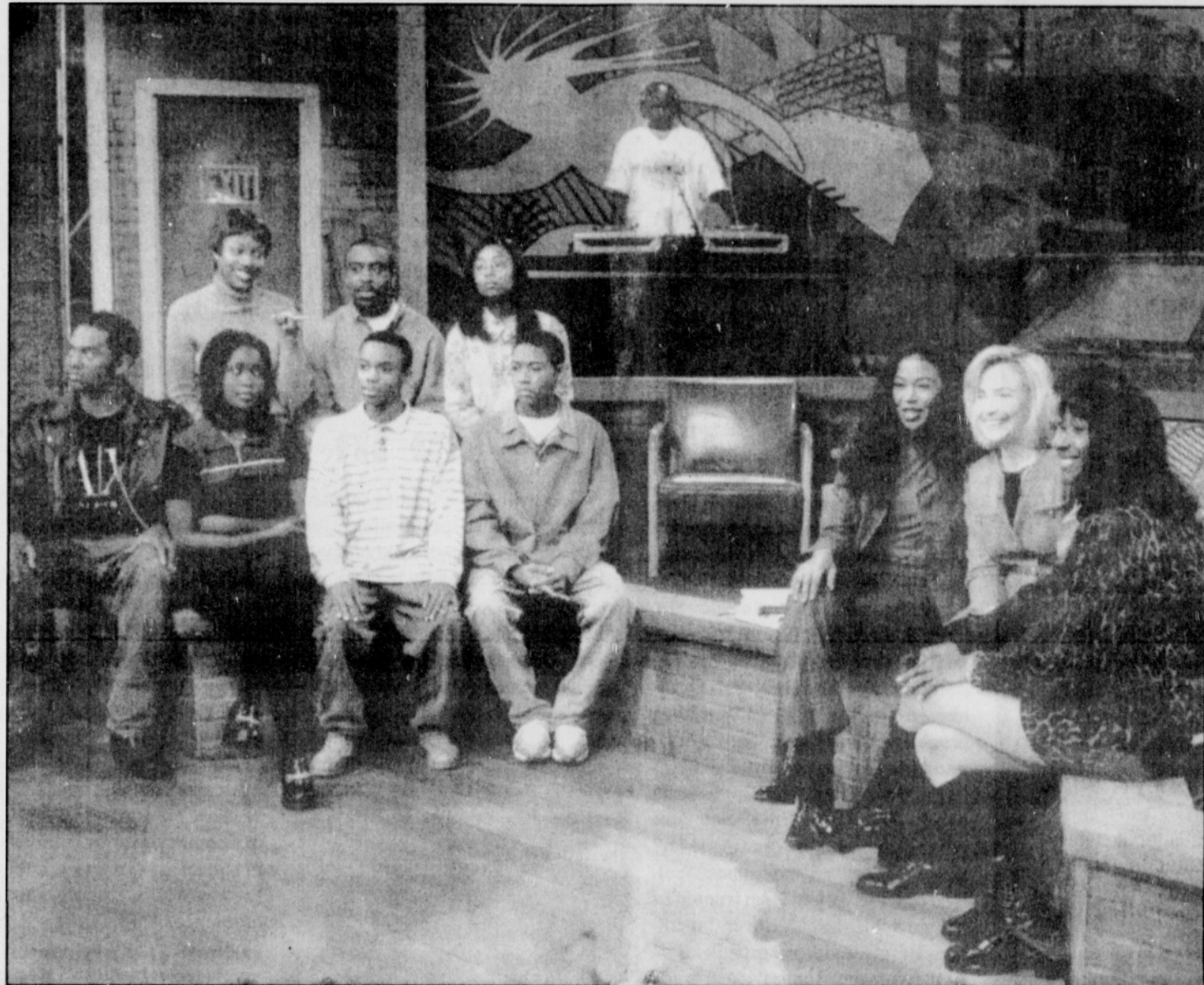
As many as 40 prisoners are dead after a fire apparently caused by guards in a Venezuelan jail, officials and human rights activists said. The fire started when a wing of the prison was closed off and tear gas canisters thrown. It was unclear why the guards had locked up the prisoners and an investigation will be conducted.

Clinton widens lead over Dole

President Clinton edged a little farther ahead of Republican Bob Dole in the Reuters daily tracking poll released today. His lead now stands at 11.3 percentage points. Exactly two weeks before Election Day, Clinton led with 46 percent over Dole's 34.7 percent. 11.5 percent said they had still not made up their minds.

Carter mediates Nicaragua

Former President Jimmy Carter is trying to defuse an election crisis in Nicaragua after Sandinista candidate Daniel Ortega refused to accept defeat, alleging fraud in the count. With more than half the vote counted, official results pointed to a big victory for right-wing lawyer Arnoldo Aleman.



First Lady speaks to youth

First Lady Hillary Rodham Clinton was featured guest on Black Entertainment Television's "Teen Summit" recently.

"Teen Summit" which features African-American teens and focuses on critical issues affecting all young people.

The First Lady had a question and answer sessions with the young audience on issues ranging from education to diversity to inner city concerns. She also discussed the importance of the upcoming November elections.

Mrs. Clinton is seated with "Teen Summit" Host Ananda Lewis (left), and Associate Producer Fran Toliver (right). To the left is the Posse, members of the teenage audience who asked questions about Mrs. Clinton's work on behalf of families and children.

First Lady Hillary Clinton answered questions on issues ranging from education to diversity to inner city concerns from members of the teenage audience on "Teen Summit." Mrs. Clinton stressed the importance of all citizens voting on November 5th.

Former E & M Sentry Market takes leap of faith

BY LEE PERLMAN

The prime backer of the new store at 909 N. Killingsworth St., known for the time being as the E & M Community Market, is the Emanuel Community General Services Corporation, an offshoot of Emanuel Temple Church.

Starting November 5, it will be open from 7 a.m. to 9 p.m. daily. After an official grand opening in January it may have a new name, possibly something suggested by the community, according to William Turner of the store's management team.

The venture is receiving financial support from the Portland Development Commission, Albina Community and Key banks, Union Gospel Mission and Portland Community College Cascade Campus. Also, there start-up staff of 15 - which will later expand to 28 or 30 - will be supplemented by Emanuel Temple volunteers. They will need all of it.

As E & M Sentry, the market closed earlier this year. At 24,000 square feet the building is small for a full-service market, and it must compete with such larger and well-established stores as Safeway and Fred Meyer.



Johnny Olive makes repairs at the new E&M Market.

Photo by Curtis Huff

Added to this, the new store begins by turning its back on one a prime source of revenue - cigarettes and alcoholic beverages. "We felt that in this neighborhood these were things that contributed to criminal activity," Turner says. Perhaps, but they also generated

\$260,000 in sales for the old market in its last year of operation. How will the new store generate enough business to close the gap?

A big element will be "customer service and a family atmosphere," Turner says. "Our key will be service, which we hope to make

the best in town." It will also offer value and specialty items. These will include African-American, Asian and Hispanic ethnic foods, the Fleming and Marquee food lines, organic produce, beauty care products and items like Henry Weinhard root beer. "We'll have one of the largest selections of pop in Portland," Turner promises. After January, they will also have a deli and prepared foods.

The venture also boasts experienced management. The manager will be Robert Malone, the old store's last manager. "It was important to have him here," Turner says. He himself worked at J.C. Penney's for 18 years. Other management team members include Roger Pender of K Mart and Paul Marshall of I.B.M. "We have a wealth of experience from various backgrounds," Turner says.

Marshall also serves as president of a board of trustees that includes Bishop Welles of Emanuel Temple, Marcus Pollard, Garry Winfield, Rosemary Daniels and Curtis Kimbrough.

All in all, the new market seems to offer all the elements in merchandise and direction community leaders have long called for. Now will come the test of whether it pays off.

DEQ Assists In Martin Luther King Jr. Blvd. Revitalization

The Oregon Department of Environmental Quality is holding a series of free workshops designed to assist Martin Luther King Jr. Boulevard property owners and local businesses with environmental issues.

DEQ is a partner on the MLK Jr. Boulevard Action Committee, which includes community, state, city, and Metro representative. The committee has been meeting since early June as a result of a revitalization program initiated by Governor Kitzhaber. Since then, the committee has identified key community issues and proposed short- and long-term

projects to address them. One of the strategies includes environmental cleanup efforts that will allow redevelopment of vacant, contaminated industrial/commercial properties ("brownfields") in the area. DEQ is supporting the revitalization through technical assistance to area businesses and contractors.

The DEQ workshops will provide specific information about responding to environmental hazards such as asbestos, underground oil or fuel tanks, hazardous waste, and contaminated soil. Information will also be provided on what is needed to start an environmental contracting business.

The workshops are scheduled for:

Workshop 1: Environmental Management in Business Activities; Wednesday, October 30; 6:00 - 8:15 P.M. Metro Regional Center; 600 NE Grand, Room 370 A&B

Workshop 2: How to Start an Environmental Contracting Business; Wednesday, November 13; 6:00 - 8:00 P.M. Metro Regional Center; 600 NE Grand, Room 370 A&B

To reserve a space at the workshops, call DEQ at 229-5209. DEQ recently distributed a brochure to local businesses and contractors describing what to do and who to contact

if hazards such as asbestos, hazardous waste, contaminated soil and underground tanks, are encountered.

DEQ is also working with the Martin Luther King Jr. Boulevard Action Committee in addressing potential contamination and soil cleanup concerns along the boulevard.

The goal of this assistance is to accelerate the cleanup process so that redevelopment can occur in a timely manner.

For more information about DEQ's activities and technical assistance resources, contact Kevin Masterson, 229-5615.

Nike establishes labor practices department

NIKE Inc. recently established a new department with a mandate to continue to evolve its monitoring of subcontracted manufacturing facilities and continue to upgrade conditions for workers in subcontractor factories around the world.

The creation of a dedicated Labor Practices Department is a further step in NIKE's ongoing commitment to have products made

only in the best facilities with the best working conditions in the sports and fitness industry.

The department will be headed by Dusty Kidd, and staffed with managers and inspectors based in production centers around the world. Kidd, a long-time NIKE employee, has held positions in marketing communications and business management in Asia Pa-

cific. He has worked as a professional observer of manufacturing environments for almost 20 years. Working with Ernst & Young, he set up the first ongoing system of independent monitoring of subcontracted consumer products manufacturing for NIKE in 1994. Combined with a worldwide force of more than 1,000 NIKE employees working with subcontractors in more than 30

countries, this ongoing monitoring system is the most comprehensive in the industry.

The new Labor Practices Department will work closely with NIKE's production staff, and with production partners in source countries around the world. Specific emphasis will be on Indonesia, China and Vietnam, which together account for 75% of NIKE's worldwide athletic footwear production.