

# Arts ENTERTAINMENT

The Portland Observer



## Friday the 2nd Hawaiian Melodies

The Oregon Historical Society presents Hawaiian music and dance by the Kanahehi Brothers beginning at noon, 1200 SW Park Ave., 306-5200.

## Farewell Party

To say farewell and help raise funds for the Miracle Theatre's touring troupe, Teatro Milagro and their tour through Mexico and the western United States, Miracle hosts a party with salsa lessons, a silent auction, music and dancing, 8 pm, 525 SE Stark St., 236-7253.

## Kyogen Tonight

The 1996 Portland International Performance Festival hosts an Kyogen Tonight, an informal performance by Kyogen comedy workshop students with guest artist Yasushi Maruishi at 8 pm, PSU Lincoln Hall Studio Theater, 1620 SW Park Ave., 725-4862.

## Open House

Portland's environmental creative arts group is throwing its annual summer shingdig and open house in celebration of the publication of *The Bear Essential* #7, 5:12 to 11:02 pm, 2516 NW 29th Ave., 242-2330.

## Saturday the 3rd India Festival

The India Cultural Association presents India Festival 1996 featuring live music, dance, entertainment and foods from India, starting at 11 am, in Pioneer Courthouse Square.

## Political Drama

Alejandro Saderman's film, *Knocks at My Door*, is a tense political drama illustrating the struggle between the church, the state and military in contemporary Latin America, 7 & 9 pm, through Aug. 4, Northwest Film Center, 1219 SW Park Ave., 221-1156.

## AIDS Project Festivities

The Cascade AIDS Project presents "Salsa-a-Go-Go", with afternoon festivities including a contest for most outrageous costumes, door prizes and contemporary and Latin dancing. Sean Sasser from MTV's *The Real World* appears as a special guest, 4 pm, Howell Territorial Park on Sauvie Island, 223-5907, ext.200.

## Sunday the 4th Concert Series

Cathedral Park's Blue Heron Concert Series continues with Johnny Limbo & the Lugnuts, in a pop/rock concert, 6 pm, corner of N. Edison and Pittsburgh Streets, next to St. John's Bridge, 289-5187.

## TheatreSports

PDX TheatreSports, combining the quick wit of improvisational comedy with the excitement of a sporting event, continues its summer season Sunday nights through Aug. 25, 8 pm, 2522 SE Clinton St., 452-6544.

## Blazers Auditions

Are you the next Whitney Houston? Well, even if you aren't but can sing the national anthem, the Blazers want you for their home games during the 1996-97 season. The Blazers will host National anthem, Halftime Talent and Public Address Announcer auditions along

## World premiere of "The Darker Face of the Earth"

"The Darker Face of the Earth" is the first full-length play by former U.S. Poet Laureate Rita Dove, who developed the piece during a three-week 1994 workshop. This epic drama, running through Oct. 27, is the final play to join the Shakespeare Festival's 11-play season.

Dove's play, set in antebellum South Carolina, tells a story of love and revenge in the shadow of slavery. In the play, Amalia-- a plantation owner's daughter who becomes the mistress of the place -- sets out to break the newly purchased Augustus, but finds herself irresistibly drawn to him. The brutal system of slavery traps them both as they play out their fateful love against the backdrop of a slave rebellion.

"The Darker Face of the Earth" combines the call-and-response form of the slave narrative with African-based drumming, music and stylized movement.

OSF presents "The Darker Face

of the Earth" in association with Crossroads Theatre Company (New Brunswick, N.J.), which will amount the play in 1977.

Ricardo Khan, the artistic director of Crossroads Theatre, will direct the Festival's production. OSF's production also features scenic design by Richard L. Hay, costume design by Karen Lim, lighting design by James Sale, music composed by Olu Dara and choreography by Dianne McIntyre. OSF Associate Director/Play Development Cynthia White serves as dramaturg and assistant to the director.

In the play, Ezra Knight plays Augustus, with Elizabeth Norment as Amalia and Thomas Byrd as Hector. Others in the cast include Michelle Blackmon, Gina Daniels, August Gabriel, BW Gonzalez, Tamu Gray, Nadine Griffith, Johanna Jackson, Kevin Kenerly, Mark Murphey, Paul Vincent O'Connor, J.P. Phillips, Dennis Robertson, Davon Russell



Drayton Hall, a plantation house, was built around 1740 on the Ashley River near Charleston, South Carolina. A southern plantation such as this the setting for Rita Dove's revealing play.

and Tyrone Wilson. The production also features two on-stage drummers, Russ Appleyard and Craig Goodmond.

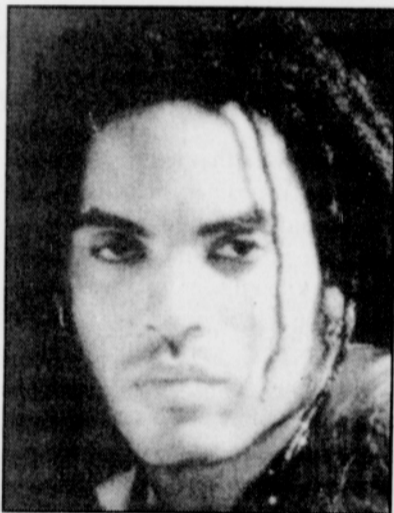
OSF's involvement with the piece began in 1993, when Story Line Press, the play's publisher, sent a copy of the script to White, who directs the

Rata evokes big issues with her rich poetry, while telling an involving story.

"A development partnership between this major American poet and ATA seemed natural in order to move her play from the page to the stage," White continues. "And so began two years of workshops, readings, and re-writes. Working with Rata has been a phenomenal experience."

In 1994, the Festival received a \$100,000 grant award for New American Plays from the W. Alton Jones Foundation for the development and proposed production of "The Darker Face of the Earth." For its production of the play, Crossroads Theatre has been awarded a major grant from the Fund for New American Plays, a project of the John F. Kennedy Center for the Performing Arts, with support from American Express Company and in cooperation with the President's Committee on the Arts and the Humanities.

## Lenny Kravitz dreaming up music



Some people dream in color; others in black and white. Lenny Kravitz dreams in music. "I was in Amsterdam," he recalls. "And it was three in the morning. I heard it all - the melody, words, everything. I woke up, ran into the bathroom and started singing into this little tape recorder. Then, I cut it the next day in the next day in the studio." He's talking about "Bullet," one of the more incendiary tracks off *Circus*. And while others among his eleven new songs were generated simply through hard work, intuitive experiment or a flash of inspiration - Lenny's fourth album

indeed qualifies as his most explosive. It's a true music lover's dream: a dazzling carnival of rock and funk, ballads and barbed guitar.

The sonic charge of "Rock 'n' Roll is Dead" detonates the record. Refining, Kravitz says, "a riff I came up with in a soundcheck in Japan," the song attacks, "the giant corporate white-bread bubblegum machine that we're all a part of" and "the cliched rock 'n' roll lifestyle." Countering the poseurs, Kravitz offers real emotion, genuine passion. The song delivers its message loud and clear; "Be whoever you are: be the person who's inside you."

## Theatre season a bagful of fun

Portland Center Stage's 1996-1997 season during the fall and winter months marks their ninth year as Portland leading theatre company.

Theatre-goers have some great productions to look forward to as this season blends an interesting mix of classic and contemporary plays, with several special features:

The production of *Miss Julie* features a new adaptation by Producing Artistic Director Elizabeth Huddle, moving the play to the 1880's American South.

PCS has commissioned Peter Schickele (PDQ Bach) to create a

new score and songs for *The Rivals* (co-commission with Chamber Music Northwest and the Lincoln Center Chamber Orchestra Society. Elizabeth Huddle makes her Portland stage debut as Mrs. Malaprop.

*A Tuna Christmas* is generating a

lot of excitement among fans of *Greater Tuna*, who can't wait to revisit this small Texas town.

A "tuna" food drive and casserole bake-off will add to the holiday wackiness associated with this show.

## Art students exhibit work

Pacific Northwest College of Arts is taking art to the streets.

Six display windows on the corner of the McCoy Building, Southwest Fifth and Stark, are now the McCoy Gallery featuring juried art exhibitions from the College.

McCoy Gallery is accessible to all passersby and is lighted 24 hours a day.

The current exhibition, which will run through the end of September, will showcase four local artists.

Maurice Fykes III of Vancouver, Wash., is displaying silkscreen prints. Adriana Martinez, a Multnomah resident, is showing woodcut prints.

While Tom Lechner of Southeast Portland, is presenting a wood sculpture installation, and Yolanda Baca-Johnson, a Portland resident, is exhibiting sculptures of stones, sticks and paper mache.

All artists are students in the Bachelor of Fine Arts program at Pacific Northwest College of Art.

## Dole's hollywood Sequel

Bob Dole is again preaching family values to Hollywood — though not in the same harsh terms he used last year. In a speech at Twentieth Century Fox in Hollywood, Dole said there is a big demand for positive, life-affirming movies. Dole's tone differed from his April 1995 speech when he condemned the entertainment industry for producing "nightmares of depravity drenched in violence and sex" and accused movie makers of "marketing images of evil to American children in a thirst for profit." This time he praised movies like "Forrest Gump," "Independence Day" and "Apollo 13" and singled out only "Striptease" as an example of bad taste.

with a Fan Fair at the Rose Quarter Commons on Saturday, August 17 and Sunday, August 18 from 8:30 a.m. to 5:00 p.m.

Interested applicants can schedule an Anthem/Talent audition time by contacting (503) 234-9291.

Spaces available for auditions will be limited.

Marquis • Boss Mecca • Pelle Pelle • Nappy

## INNERCITY OUTFITTERS

Urban Survival Gear

## SUMMER SALE SPECTACULAR



Pagers  
Apparel  
Cell Phones  
Tennis Shoes



SUPPORT MINORITY BUSINESS

\$5.00 OFF all apparel

With this Coupon

2006 NE BROADWAY  
(503) 460-2640 (503)460-2641

Nappy • Pelle Pelle • Boss • Mecca • Marquis

## Music Galore and Galore Paging

Activate any pager for 25 cents!

- \*No Gimmicks
- \*No Credit Check
- \*No Hidden Cost



## Activates Any Pager!

3213 N. E. Martin Luther King Blvd.  
Portland, OR 97212  
#(503) 288-9180

## Interstate Firehouse Cultural Center

in partnership with  
**G.R.E.A.T.**

Gang Resistance Education and Training Program

## presents the Neighborhood Youth Theatre Project

(Previously know as Theatre in Da Hood)

### Workshop Locations

Interstate Firehouse Cultural Center • 5340 N. Interstate • 823-2000  
Villa De Clara Vista • NE 72nd & Killingsworth • 284-7075/ 249-2061  
Rice School/Asian Family Center • 6433 NE Tillamook • 235-9396

Workshops

July 8-26

9:00 a.m. - 1:30 p.m.

Potluck and Performances

July 24-26

6-9 p.m.

**Breakfast and Lunch provided**

Optional afternoon activities available