

Organizations Offer Scholarships

The following scholarships are available for area high school graduates:

Legacy Emanuel Healthcare

For the seventh year the center will award \$1000 college scholarships to high school students studying for a career in a health-related field. The scholarships are available to students who reside in North and North/Northeast Portland neighborhoods and have at least a 2.75 grade point average. The scholarship is renewable and may be used for tuition and other college fees for up to four years of college. The student should pursue a career in an accredited medical program on a full-time basis. Application deadline is April 15. Call 413-4630 for information or to request an application.

The Arc of Multnomah County

The Arc, an advocacy group for people with developmental disabilities, is accepting scholarship applications from graduating seniors in Multnomah County. Applicants must submit an essay of no more than 500 words on "Valuing Diversity: How an Individual with a Developmental Disability Has Affected My Life." The \$500 scholarship is for the two- or four-year college of choice. Entry forms and information on other requirements are available through the counseling offices at local high schools or call 223-7279. Deadline for submissions is April 19.

Western Oregon State College

The college's foundation has created the David S Brody Memorial Scholarship Endowment. The scholarship will provide in-state tuition, room and board, books and fees renewable for up to four years to qualified applicants. Preference will be given to applicants who are members of underrepresented ethnic minority

groups, especially hispanic. Additional preferences will go to first-generation college students and second preferences will go to bilingual applicants. Those wishing to apply should submit a Western General Scholarship application. Applicants should include their bilingual ability, financial need, or first-generation status in the essay required as part of the application. For more information call (503) 838-8195.

The American Health and Beauty Aids Institute

AHBAI is accepting scholarship applications for its Fred Luster Sr. Education Foundation. The \$250 and \$500 scholarships are awarded for academic achievement and school and extracurricular activities. To be eligible, candidates must be college-bound seniors enrolled in a four-year college for the 1996-97 school year. They must be majoring in chemistry, business or engineering with a minimum 3.0 grade point average. Two letters of recommendation are required. Applications must be post-marked April 15. Call (312) 644-6610 for more information.

Returning adult women are invited to apply now for the Nancy Ryles Scholarship at Portland State University. The scholarship provides \$5,000 a year and is renewable until graduation. It covers tuition, books and fees and provides a limited amount for other expenses.

The Scholarships is geared to women in financial need who are returning to college after an interruption in their education due to financial difficulties, family responsibilities or other personal disabilities. Applications are available in Portland State University's Women's Studies Office. Call 725-3500.

A TASTY AFFAIR

Wayne Cannon left San-Jose, California, in november 1995 for greener pastures in Portland.

And it did not take long before his dream came through. Today, Cannon's dream is to transform the eatery into chains. What does he want in his business? "Gratification that comes along with owning a business".

Chuck Hinton's Bar-B-Q, located at 3328 N.E Killingsworth, is expressively designed to cater to people who have taste for real hickory

smoked beef, chicken or Pork.

It's menu contain hot links, beef brisket, mixed greens, bbqbaked beans, corn on the cob, red beans and rice, corn bread muffins, potato salad, cole slaw, banana pudding, peach cobbler pound cake and sweet potato pie.

When next you think about catering at your parties, dinners, and on your special occasions, Cannon says they are ready to give you more gratification and more satisfaction for less.

To place an order call 288-3836.

Secretary Brown Dead

Continued from front

engage in competition as the best in the world.

He started in politics in 1980 when he backed Massachusetts Senator Edward Kennedy in a bid against incumbent Jimmy Carter. In 1988, he backed Jessie Jackson, and when it was clear Jackson was going to lose the nomination, Brown negotiated peace with Michael Dukakas.

When Brown ran for chairman of the Democratic Party in 1989, he enlisted help from Kennedy, Senator Bill Bradley of New Jersey and New York Governor Mario Cuomo. He kept talking to southern conservatives like Senator Sam Nunn of Georgia and, in spite of opposition to a black in that important post, claimed his seat as party leader.

He then bought the Democratic Party and Bill Clinton to a presidential victory against George Bush in 1992.

Brown made deals and won foreign contracts for passenger jets for Saudi Arabia and power plants in India. He lead the Clinton administration toward the center and by 1994, big business was solidly behind Clinton.

Ron Brown knew success and savored the lifestyle it provided.

Republicans accused him of abusing his political power for personal

gain. But a Justice department investigation cleared him of the charge of accepting money from businessto help end the embargo against Viet Nam. And as his plane went down, he was being investigated for alleged improprieties in his personal finances, killing his chances of heading Clinton's re-election.

Brown's parents were Howard University graduates and his father managed the Hotel Theresa in Harlem, a meeting place for the best and brightest black Americans of the time.

He was the first black student at elite Middlebury College in Vermont. When he joined Sigma Phi Epsilon fraternity its charter was revoked, leading the college to bar any organization with a racial exclusion clause.

He served in the Army and joined the National Urban League as a welfare caseworker. Brown took night classes in law at St. Johns University, and in 1973, became Washington spokesman for the Urban League. But he became tired of "being an expert on all things black," and went into politics.

Brown lived in Northwest Washington with his wife Alma Arrington. They have two children, Michael, a University of Delaware Law School graduate and Tracy Lyn, who graduated from Boston College. Brown was 54.

Lane County Commissioner Opens Convention

Lane County Commissioner Bobby Green, Sr. will give the key opening for the 1996 Oregon Black Political Convention scheduled for April 27-28.

According to Convention Chair Hank Miggins, a number of candidates running for US Senators, State Representatives, and County Offices have requested a chance to address the convention.

The Oregon Black Political Convention will be held at the Salem Quality Inn. OBPC is statewide in its focus and is open to the public. Any individual or organization addressing the concerns of Black in Oregon may be a delegate to the convention. Registration information may be obtained by writing to OBPC, P.O. Box 12485, Salem, Oregon 97309

BUSINESS PROFILE

Annie Pearl's Restaurant

Tribute To Grandmother And Sample Of Black Culture

BY PAMELA JORDAN

The stage at Annie Pearl's restaurant buzzed with activity one Saturday afternoon as one crew took down lights from previous nights concert, and a second crew set up a light and sound system for the house D.J.

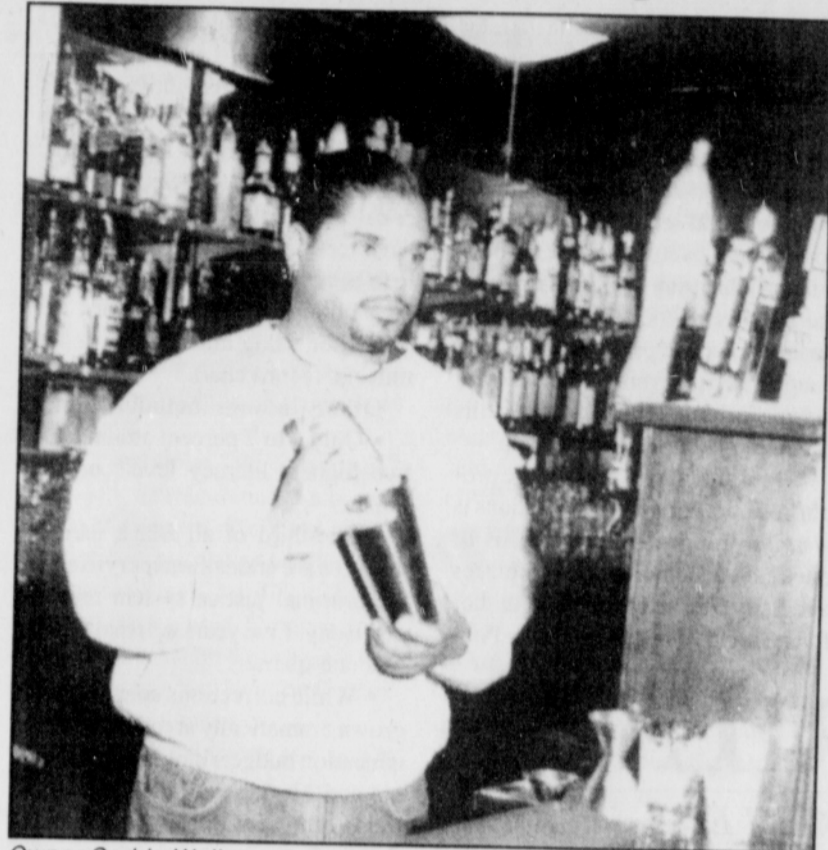
It's activity that owner Cedric Walker says would make his late grandmother, Annie Pearl, well up with pride.

"She was a go-getter. I named the restaurant after her, because she was such a wonderful influence in my life," said Walker. "It's my goal to do her memory justice."

Annie Pearl's Soul Food Restaurant opened in January, serving up down home soul food. From its ribs, red beans and rice, black-eyed peas, and fried catfish, to cobblers, cakes and other deserts, these dishes are the kind that warm the heart of any soul food lover.

Names like Aunt Sally's Sweet Potato Pie, and Ms. Earline's Peach Cobbler conger up images of family, and add to Annie Pearl's charm, particularly for black folks. "We use the recipes of the people the dishes are named for," said Walker. "I come from a family of great cooks, and so do the people who work here."

Along with serving up good food, Walker and booking agent



Owner Cedric Walker mixes drinks at Annie Pearl's

Dee Baker are offering up a variety of musical acts. Jazz and blues vocals add a touch of class to the dinner hour, and flat our funky acts like Dennis Springer and 70's throwbacks such as Lakeside, Ray, Goodman & Brown, spice up the weekend entertainment line-up.

"We want to create a more upscale

environment, without coming off as stuffy or aloof," said Baker. "That's why our no tennis shoes, no hats no sweats dress code exists. We want out clients to feel that they're coming to a place that's a little different, a little special."

And that dress code is strictly enforced on weekends. Baker says the

security has turned away a number of people who try to enter wearing dress-down duds on Fridays and Saturday nights.

While the restaurant's Central Eastside Industrial District location may seem off the beaten path, the building once housed the Euphoria night-club, a hot-spot for great music in the 70's and 80's. Walker said the building's legacy and location made it perfect place to meet a need in Portland's dining and entertainment scene.

"I felt a major void in the Portland metro area for the kind of venue that holds large events that cater to people who appreciate African-American culture," said Walker.

Located at 315 S.E. Third Ave., the outside of the building is somewhat deceptive. Its exterior blends right in with the other warehouses in the neighborhood. Inside, the atmosphere is secluded yet spacious.

Walker said initially business owners in the area seemed reticent about an establishment run by African-Americans moving into the neighborhood. But those apprehensions seem to be fading, as Annie Pearl slowly establishes its reputation as a well-run business.

"We're here for the long-haul," said Walker.

WITH A LITTLE HELP FROM TRI-MET, THE ROSE GARDEN ARENA NIPPED PARKING PROBLEMS IN THE BUD.

Parking at the Rose Garden could have posed a thorny problem for the almost three million fans who attend events there each year. But Tri-Met rose to the occasion and helped avert potential snags before they could grow.

Working with the Blazers and Rose Quarter officials, Tri-Met devised a comprehensive plan providing bus, MAX, and shuttle service to and from the facility. In fact, 12 different Tri-Met routes serve the Rose Quarter, in addition to a dedicated MAX station. There's simply no faster, cheaper, or easier way to get to the arena.

Tri-Met service to the Rose Garden is certainly a convenience, but it's also a necessity. The building holds over 20,000 people and has only 2,400 parking spots. That's why many sports, music, and event fans are also fans of Tri-Met.

The Rose Garden Arena is just one example of Tri-Met's successful problem-solving efforts around Portland. Tri-Met has also customized innovative programs to serve the Marquam Hill medical community, Portland International Airport, and over 200 local businesses.

We're on the road to a more livable future. But to get there, we need you on board. Let us help you get where you're going. Call 238-RIDE.

How We Get There Matters.

TRI-MET
238-RIDE
TTY 238-5811