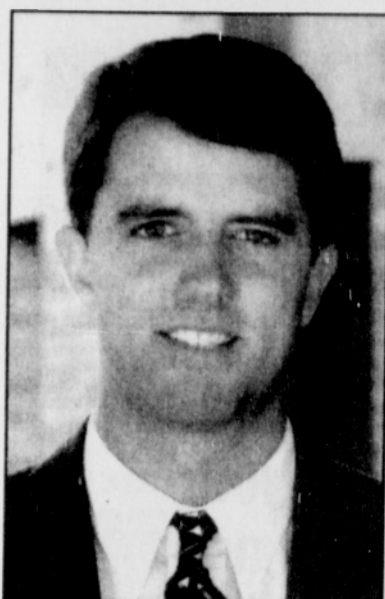


# Education

## Portland State Opens Business Outreach Center



Dean Boyer, Coordinator, PSU Southeast Portland Business Outreach Center

small business owner, will coordinate the center, which offers counseling and practical assistance to small business operators. Boyer will work with individual clients, backed by the assistance of PSU undergraduate and graduate business students.

"Our business school is committed to providing assistance to small businesses in the Portland metropolitan area, and this office will greatly enhance our ability to do so," said Roger Ahlbrandt, dean of PSU's School of Business Administration.

The center is funded through a contract between PSU and the City of Portland Bureau of Housing and Community Development. The bu-

reau uses federal economic development assistance funds it has received through the U.S. Department of Housing and Urban Development (HUD) to fund the program. The \$50,000 contract runs through Sept. 30, 1996, and will be extended based on continuation of HUD funds.

Alan Zeiber, director of PSU's Business Outreach Program, said the new center fits in well with the city's targeting of southeast Portland's Brentwood-Darlington and Lents neighborhoods for economic development. PSU will work closely with the Portland Development Commission and the Bureau of Housing and

Community development to make sure the neighborhoods have direct access to technical and financial assistance.

"There are areas of the city that clearly want and can use what we have to offer," Zeiber said. "We seem to get better response when we have a presence in the neighborhood we're serving. We've become part of the neighborhood we're serving. People don't have to travel to PSU to look us up."

Zeiber said early response to the southeast Portland center is encouraging, and is similar to the positive response he's seen at PSU's North-

east Portland Business Outreach Center, which opened two years ago. Zieiber and Tim Shea, coordinator of the northeast Portland center, have served more than 50 clients in that part of the city.

Steve Rudman, director of the Portland Bureau of Housing and Community Development, said the agency was attracted to PSU's business outreach efforts because of the success of the university's northeast Portland outreach office.

"The program works because it involves a one-to-one mentorship model," said Rudman. "It seems to work particularly well for small,

emerging and minority businesses, particularly in low-income areas.

"We see the value in pursuing this type of program in a true public-private partnership. This is a great example of a town-gown relationship," Rudman added.

Overall, nearly 150 Portland State students have worked in the Business Outreach Program, serving dozens of small-to-medium-sized businesses, Zeiber said.

Person seeking assistance at the Southeast Portland Business Outreach Center may contact Dean Boyer during regular business hours at 225-2396 (fax: 225-3359).

Southeast Portland residents who operate or plan to start a small business have a new, free source of help with the opening of the Portland State University School of Business Administration's Southeast Portland Business Outreach Center.

The center is headquartered in space donated by First Interstate Bank at the bank's 46th and Woodstock branch. A second office is located in space donated by Bank of America at that bank's Eastport Plaza branch at 3952 SE 82nd Ave., just south of SE Powell Boulevard.

Dean Boyer, a longtime southeast Portland resident and former

### Portland Averts Teacher's Strike

Continued from front

shame we get our raise because people don't want 57,000 kids on the streets. Not because they think educators are worth it," an unidentified teacher said.

"We were fortunate that we were able to avert a strike, but the crisis is not over," said Mayor Katz.

The school board gave its official OK Thursday. Now it must deal with other unions representing more than 3000 secretaries, bus drivers, custodians and teacher aids who are working without contracts. The specter of layoffs, program cuts and larger class sizes still loom in the near future.

Still, Jack Saggar, president of the Portland Association of Teachers was elated. "A week ago I would not be smiling like this," he said.

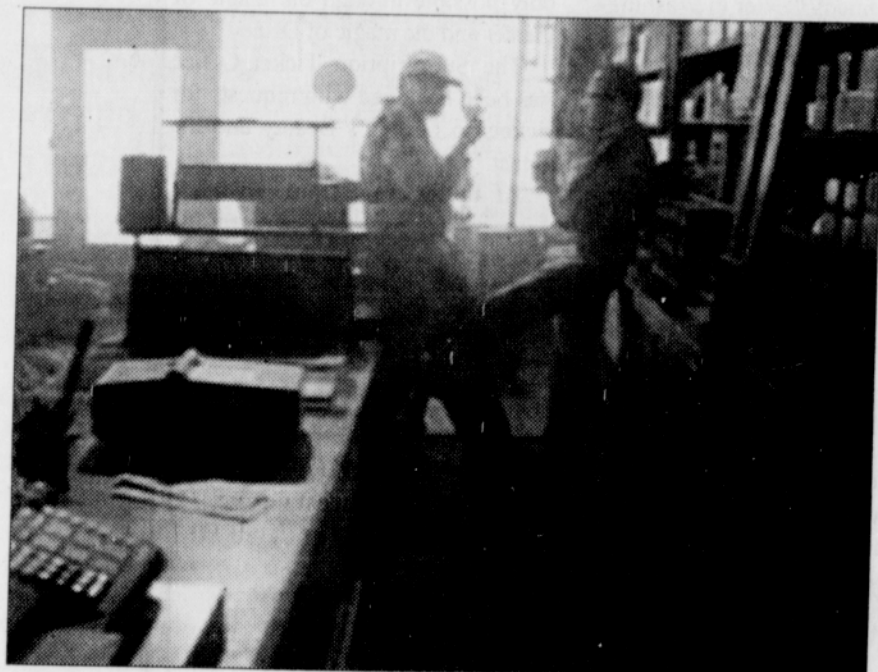
Although the threat of a teacher's strike is over, Portland's public school system is still in crisis. We will bring our readers updates on developments and potential solutions. Next week: How did we get here?

Our sophisticated energy management programs for local businesses often begin with a high level conference with executive management.

At PACIFIC POWER, our programs to save energy for local businesses are state-of-the-art. They can deliver not only technical guidance and direction, but innovative ways to pay for energy efficiency upgrades that might be required.

But, valuable as that may be, our commitment to energy efficiency starts and ends with people. Sure, we'll bring in the experts if need be. But in the end it's a local partnership with someone you know at the local power company.

Someone you can count on.



**PACIFIC POWER**  
THE RIGHT KIND OF ENERGY  
A Division of PacifiCorp

### ENCOUNTERS

Singles Network System

Love in the spring promotion. First 100 callers who register will receive a free membership.

For three referrals. Call Soon 243-2887

# EASTER SAVINGS

Prices Effective April 3 through April 9, 1996 at your nearby Safeway store.



**2-Liter Coca Cola**  
• Plus deposit in Oregon  
• FIRST 6  
• SAVE UP TO 1.12

**66¢** ea

Most varieties available at most stores.

## Bone In Smoked Ham

- Shank portion Cook's Ham & Water
- Whole hams or shank half, 1.18-lb
- Butt half, 1.28-lb; Water added
- Butt portion, 89¢-lb
- SAVE UP TO 90¢ LB

**79¢** lb

## Half Flat Ripe Sweet Strawberries

- Fresh from California
- 6-Pint baskets
- FIRST 2

**3.98** ea

Look For Your Safeway Weekly Shopping Guide In Your Oregonian FOODday in the Portland Metro Area ...And Save More Shopping At Safeway!

Enjoy Extra Savings With The SAFEWAY EXTRA In-Store Savings Guide Available at your Safeway store.