

METRO *Life*

The Portland Observer

SECTION B

Community Calendar

Adventure Film Presented

Visit Lima, Peru, the city of Kings, float down the meandering Amazon River and view Iquitos' colorful flora and fauna when a travel and adventure film on Peru is presented Thursday, March 28 at the Arlene Schnitzer Concert Hall. For information call 241-2575.

Jazz Cruise Planned

Tickets for "A taste of Jazz" are now on sale at Ticketmaster outlets. The second annual jazz event will cruise the Willamette River Sunday, May 19 with some 40 jazz musicians performing on three decks of the sternwheeler Columbia Gorge. The event supports the Mt. Hood Festival of Jazz Beacock Jazz Workshop scholarship fund.

Lessons For Young Actors

A five day series of acting lessons for children in grades 2-8 is offered by the Portland Actors Conservatory during spring break, March 18-22. The sessions emphasize acting techniques, character development and the professional rehearsal process in a fun and enriching format. The cost is \$175. To register call 274-1717.

Music Classes Offered

The Portland Parks and Recreation MLC Community School is offering music instrument classes for spring term to include guitar, clarinet, saxophone, recorder and flute. All classes are taught as individualized half-hour lessons in a small group format. Call 280-5742 for information and registration.

Hawaiian Club Luau

The University of Portland Hawaiian Club is holding its 20th annual Luau March 30 at the Chiles Center. Doors open at 4 p.m., dinner follows at 5:30 p.m. and the show starts at 7 p.m. Tickets are available at the University information center.

Crisis Volunteers Needed

Metro Crisis Line is recruiting volunteers to staff its 24-hour telephone crisis intervention and information referral hot line. The agency needs volunteers for day, evening, overnight and weekend shifts. Call Claudia Moorad at 226-3099 for more information.

Rhino Bowling For Prizes

Beaverton's Sunset Lanes will host Bowling for Rhinos, a national fundraising event on March 30 to help save the world's shrinking rhinoceros population. Local bowlers are encouraged to make a strike for conservation and win great prizes, including a trip to Africa. Call 226-1561, extension 255, to register or for more information.

Pub Hosts Irish Festival

An authentic St. Patrick's Day festival takes place all weekend downtown at Kells Irish Restaurant and Pub, 112 S.W. Second Ave. As part of the fun, a Celtic Street Faire offers a chance for families to experience authentic Irish crafts, dancers and even a genealogist.

SUBMISSIONS: Community Calendar information will be given priority if dated two weeks before the event date.

Contaminated Fish Swim Slough Waters



A campaign is underway to stop area residents from eating fish from the waters of the Columbia Slough.

The problem is that the fish caught in the waterway along the edges of north and northeast Portland have been found to contain harmful chemicals that may cause cancer and other

health effects.

Health officials recommend that people avoid eating fish from the slough altogether.

For people who ignore the warnings and still choose to eat fish from the slough, they are urged to take safety precautions by eating fish less often and in smaller portions.

Fish should be fillet, cutting away fatty parts and discarding the skin and internal organs. These parts may contain much higher levels of contaminants, officials said.

Surveys have found that fishing is common on the slough and that many people consume their catch.

The studies also show that 15.5 per-

Warning signs point to the dangers of pollution on the Columbia Slough in north and northeast Portland.

cent of the fishing on the slough is by African Americans, 20 percent by Caucasians of eastern European descent, 55 percent by other Caucasians, 4 percent by Asians and 4.5 percent by the Hispanic population.

For over 100 years, human activities have degraded the quality of the waters and sediments of the Columbia Slough.

Sewage and industrial discharges and runoff from roads, industries and agricultural areas have introduced chemicals that can harm the environment and pose human health risks.

Recent studies indicate that these chemicals have accumulated in sediments at unhealthy levels and in fish tissues that pose long-term cancer risks in humans.

The city of Portland is conducting a study to determine the extent of contamination.

The results will be used to help control the sources responsible for the problem and clean up areas where the levels of contamination threaten human or environmental health.

Portland Teachers File Unfair Labor Practice

Last year, 1,500 Portland teachers were assaulted or threatened, verbally or physically, in Portland schools. Teachers have been poisoned, shot at, kicked and bitten. Within the past two weeks a semi-automatic weapon was discovered in the possession of a student who had threatened to kill a teacher at Grant High School.

A Portland School Site Council survey showed that last year 42 percent of Portland

teachers were threatened verbally or physically, or felt threatened. That is a 12 percent increase over a similar survey conducted five years ago, and a 32 percent increase over a 15-year-old survey.

"We are deeply concerned for the safety of our students and our school district employees," says James Sager, President of the Portland Association of Teachers (PAT). "We don't want to see Portland go the way of other urban school districts in the nation. We need to take steps to stop the violence now."

Sager said work place safety is an issue that teachers want to address in their current negotiations with the Portland School District, but the district has refused to bargain it.

"The district has refused to bargain over this important issue, as well as over other issues, that we feel are clearly working conditions and therefore mandatory subjects of bargaining under Oregon law," said Sager.

On March 5, the teachers union, Portland Association of Teachers (PAT), filed an Unfair Labor Practice charge against the

Portland School District for refusing to bargain over these issues. The charge was filed with the Oregon Employment Relations Board in Salem. "Because we are at impasse in our bargaining process and only a month away from a potential teachers strike, we are seeking an expedited hearing on this charge from the Employment Relations Board," said Sager.

The hearing could take place as early as March 15, 1996, where a number of Portland Teachers will testify about being assaulted or threatened.

Gaines Named Bank Executive

Phyllis Gaines of northeast Portland has been promoted to the position of Assistant Vice President at Key Bank.

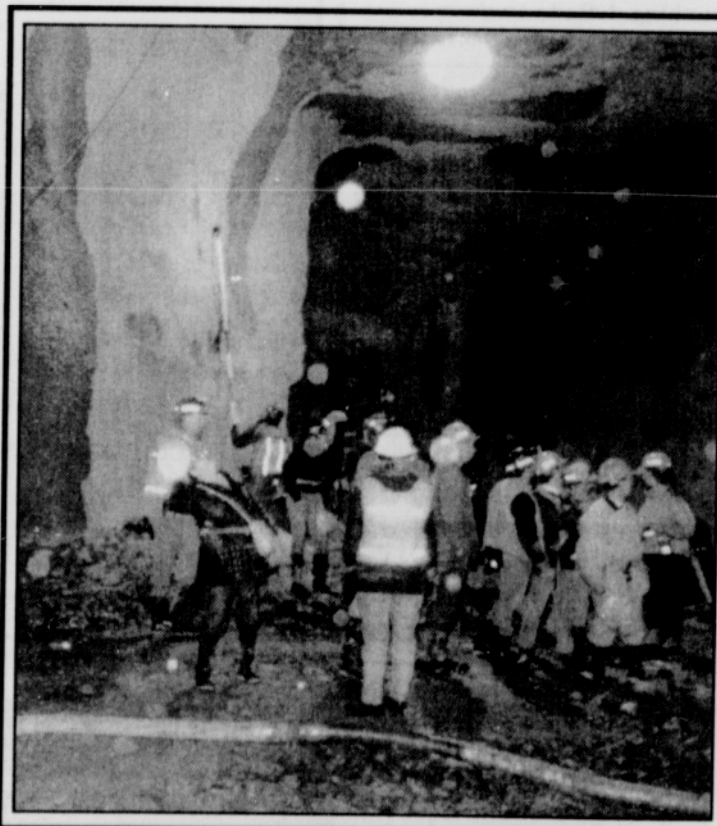
Gaines, who has 15 years experience in the financial services industry, has served as a consumer loan officer at Key Bank.

She graduated with a bachelor's degree from Xavier University in New Orleans, La. Her responsibilities at Key Bank have included the development and marketing of new and existing bank products to low- and moderate-income residents and housing rehabilitation loans. Gaines is a member of the Oregon Bankers Association.

KeyCorp, headquartered in Cleveland, Ohio is one of the nation's largest bank holding companies, with \$66.3 billion in assets at Dec. 31, 1995. The financial services company has more than 1,400 branch and affiliate offices in 26 states from Maine to Alaska.



Phyllis Gaines



Tri-Met gives area residents an inside look at one of the West Side Max light-rail tunnels under construction in the West Hills. Neighbors visited what will eventually be the Washington Park station, the deepest transit station in North America at 260 feet.

Oregon Beaches Jeopardized By Flood Debris

Piles of debris are expected to arrive on Oregon's shore following flooding of coastal and inland waterways this month. Coordinators are planning for what may be one of the largest beach cleanups ever when this spring's Great Oregon Beach Cleanup takes place on Saturday, March 30, beginning at 10 a.m.

"5,000 - 6,000 volunteers traditionally participate in Oregon's twice annual beach cleanups. We will need every one of them and more," said SOLV Executive Director Jack McGowan.

The volunteer response to the flood in

Oregon has been phenomenal and now beach cleanup coordinators are asking for more help to make sure that Oregon's beaches are left clean for visitors and wildlife.

Lt. Mike Stone of the U.S. Coast Guard said "Woody debris is already beginning to pile up on the beaches and our fly-overs and boat patrols are showing a zone of debris offshore." The Coast Guard is tracking trends in currents to help determine where the heaviest debris accumulation is occurring and expects landfall of much of it within the next two weeks.

Because of the enormous amount of debris expected to wash in on the tides, this will be

a cleanup to remember. It's important for all volunteers to wear sturdy clothes, shoes and gloves. State parks will open more beach access points for 4-wheel drive vehicles to carry off the large pieces so that volunteers won't attempt to pick them up. "This may be the biggest collection day in beach cleanup history," commented Linda Lopez, Volunteer and Special Events Coordinator for Oregon Parks & Recreation Department. State parks and Oregon Department of Fish and Wildlife, co-coordinators of the event, will also be checking beaches for deposits of material

Members of the Oregon Refuse and Recy-

cling Association will be hauling collected debris to landfills and recycling stations along the coast. They are prepared for appliances, tires and other materials that are expected to arrive on the beaches.

Volunteers should call SOLV at (503) 844-9571 in the Portland area or leave names and addresses at 1-800-322-3326.

A brochure with complete details will be mailed.

Sponsor of the Great Oregon Spring Beach Cleanup are Jantzen, Shilo Inns, Tektronix, Georgia-Pacific Corp., First Interstate Bank of Oregon and Clean Rivers Co-op.