

# Family Living

The Portland Observer

## Princess Selection To Start

"The Winning Spirit" will be demonstrated at 14 Portland area high schools in March as local student bodies elect their representatives to the 1996 Portland Rose Festival Court.

To qualify for the Rose Festival Court, candidates must be a full-time female student and a member of the graduating class, have a cumulative GPA of 2.75 or better, and have good citizenship and attendance records.

Each school's court is comprised of young women selected for their

leadership (50 points) communication (25 points) and overall impression (25 points). Up to 100 points may be awarded any candidate. Students elect their representative from the court selected by an impartial panel of judges.

Each judge may only participate at one school.

Rose Festival Court Chairman Eldon Tichenor says, "Once again we have the opportunity to showcase some of the best young talent our city has to offer. I am amazed that

these young women have accomplished so much so soon.

"While leadership qualities, scholastic achievement and civic involvement have always been a large part of the selection process, I am pleased that we continue to place even more emphasis on these important areas," says Tichenor. "We also need to remember that these young people will be representing their schools, the Rose Festival and the City of Portland as they travel and meet people throughout the state. That's why

members of the Court must have excellent communication skills and the presence to do well in many different settings and situations."

Once the members of the court are selected, a new group of judges will determine which will represent the Rose Festival and the City of Portland as the 1996 Queen.

The announcement will be made Thursday, May 30 at the Incredible Universe Queen's Coronation presented by KWJJ at the Civic Auditorium.

### Rose Festival Schools Chosen by Lottery

The Portland Rose Festival Association has selected 12 local schools to participate in the inaugural Rose Festival Kids program.

The schools selected to participate in the pilot year are Vestal Elementary and Fernwood Middle School; King Elementary and Tubman Middle Schools; Chapman Elementary and George Middle Schools; Smith Elementary and Gray Middle Schools; Sunnyside Elementary and Youngson Elementary Schools; and Prescott Elementary and Russel Elementary Schools.

All 12 projects will be showcased at the Viking Industries Kick-off Luncheon May 8 at the Oregon

## PCC Winter Enrollment Declines

Enrollment at Portland Community College at the end of the fourth week of winter-term classes has declined slightly by 1.9 percent from one year ago. A total of 29,633 students are registered for courses at the college, down from 30,207 in winter 1995.

The decline is believed to reflect the fact that residents are focusing on job opportunities in the Portland area as the local employment market continues its positive growth pattern.

"We're seeing this pattern across the country," said Don McInnis, PCC vice president for Educational Services. "Overall, the stronger economy is reflected in fewer numbers of students enrolling full time. The reverse was true in the '80s when the college saw a dramatic enrollment increase during the recession."

Enrollment of full-time students decreased 3.1 percent, from 4,140 in winter 1995 to 4,010 in winter 1996. This figure includes enrollments of students taking a less-than-full course load, but which are calculated together to get the equivalent number of full-time enrollments.

In the lower division transfer programs, 2,054 students are taking classes, a decrease of 3.4 percent over last year's total of 2,127.

Basic education programs showed marked enrollment increase over last year. English as a Second Language programs increased 66.7 percent, and Adult Basic Education 33.6 percent.

Enrollment declined at the Sylvania Campus, PCC's largest campus in southwest Portland.

## Floods And Black History, Cont'd

BY PROF. MCKINLEY BURT

Thanks again for a warm response to an article of mine that I felt would address both areas of cultural pride and the education sectors. Especially rewarding was the interest shown by teachers, within and without the Portland district. Yes, I do strive to thoroughly document and verify my presentations; that is absolutely necessary if we are to gain the greatest impact from recitations of black contributions to the culture and technology of the world.

The specific article -- "Floods: Black History Records Ancient Triumphs - Accommodations" -- follows that mode exactly. Interestingly, I submitted carefully detailed account of the "African Hydraulic Civilizations" (as they were called by Dr. Karl W. Butzer of the University of Chicago) to the Portland School District, while under contract to develop such material for their "Base Line Essays" program in the area of science and mathematics (1983).

This was just one element of a twelve-part curriculum/lesson Plan package I presented, ranging from the dynastical periods of Egypt to the contemporary inventions of blacks in the space age. Needless to say, little of it, if any, ever appeared as an educational product (let alone in the classroom). In consequence, many teachers brought me into their classrooms on an individual school contract, or, as several did, paid me out of their own pocket.

Interestingly, all these years later, "Operation shutdown" is still in full

swing in the Portland School District, where we have the 'predominately black' schools--but it is in the outlying 99% white districts where I am invited to make presentations (year round). I have begun to realize that this increasing acceptance (by whites) is a result of referrals to local school districts made by the participants in my current workshops for industry.

As was the case with my many workshops for U.S. Forest Service personnel around the Northwest, quite often there are members or relatives of the educational community in the audience. Needless to say, referrals from industry people carry a lot of weight, especially when your "product" centers around technology and the workforce. It is unfortunate that I got cut off from the inner-city where I formerly was allowed to deliver a much needed motivational product. Perhaps some of the readers have ideas about the "who" and "why" involved.

Meanwhile, back at the ranch--I mean floodplain--I did not have quite enough room last week to detail some other sources and documentation. My special thanks to Dr. Nohaud Toulon who was head of the School of Urban Studies at Portland State University at the time I developed the "Nile River Package". The Black Studies Department where I taught was a component of this school, and Dr. Toulon, who was later to take leave to become the Housing Minister of Egypt, was kind enough to provide me referrals of immeasurable value.

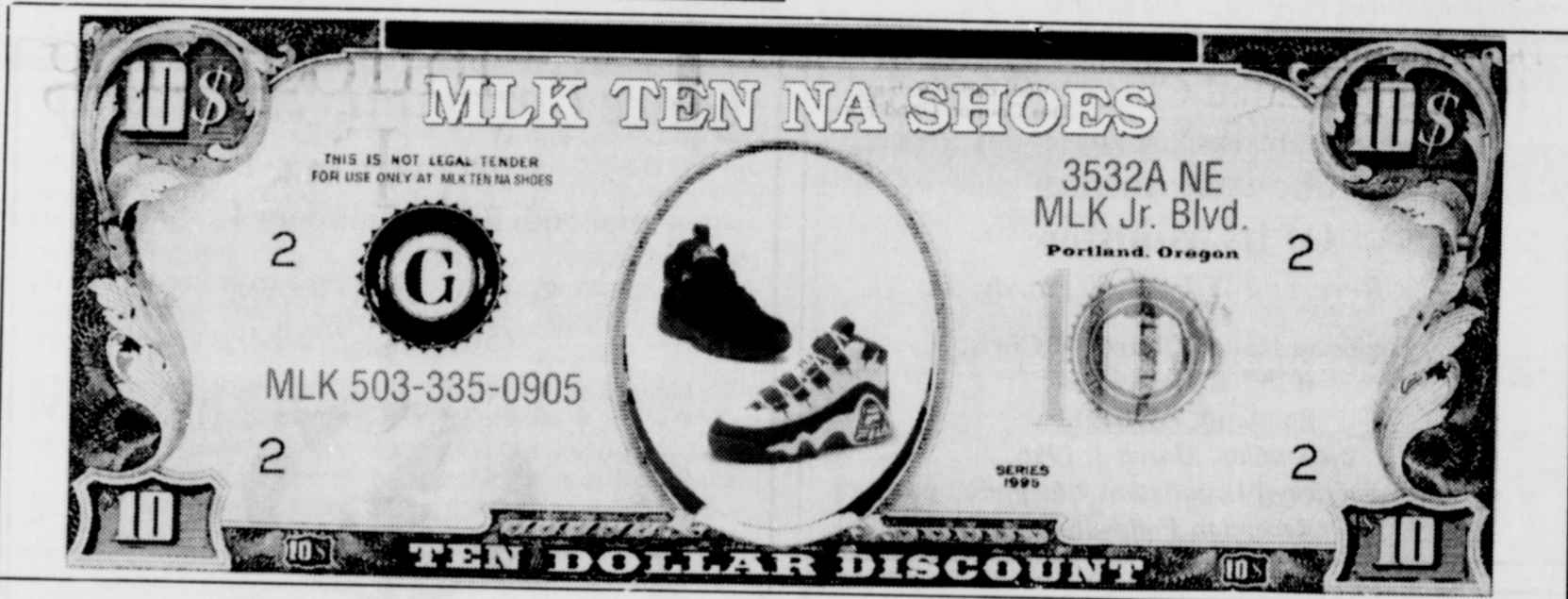
One reader would remind me that Hollywood finally "acknowledged the blackness of the African country of Egypt" by selecting an African American actor for the role of assassinated President Abdel Nasser" (1956-1970). Perhaps next time around, they might again concede that African countries produce black people--and cast an African American female as Cleopatra (before Elizabeth Taylor gets another face lift).

Also, for those who are really interested in the thousands of years of floodplain technology in Egypt, you will want to review the unfortunate consequences of some modern techniques. See Essay No. 24, "Can Egypt Survive Progress", in, 'Population, Evolution And Birth Control, Garrett Hardin Ed., W.H. Freeman and Co., 1969 second Ed.

## Jefferson Students Excel

Nine Jefferson students brought home honors in the Portland Public Schools Business Technology Skills Competition at Madison High School on Feb. 6. Two hundred students from seven high schools competed in 13 categories including accounting, business math, computer applications, economics, electronic calculator, introduction to business, im-

promptu speaking, job interview, keyboarding applications, public speaking, word processing and FBLA creed (Future Business Leaders of America). The Jefferson students winning awards were Tri Huynh (2), Jacky Nguyen, Thu Truong (2), Shawna Chasteen, Fabian Branch, Cindy Nguyen, Katrina Sartin, Ben Gaither and Melinda Randolph.



## Bring Home The Savings!

Prices Effective February 28 through March 5, 1996 at your nearby Safeway store.



**Homestyle Buttertop Bread**  
 • 24-Ounce White or Wheat, Mrs. Wright's  
 • First 2  
**2 for \$1**  
 • SAVE UP TO 1.98 ON 2

### Beef Chuck Roast

- Blade or 7-Bone
- SAVE UP TO 1.01 LB

**98¢**  
lb

### Seedless Grapes

- Red, Thompson or Black

**4 96¢**  
lbs

Look For Your Safeway Weekly Shopping Guide In Your Oregonian FOODday in the Portland Metro Area...And Save More Shopping At Safeway!

Enjoy Extra Savings With The **SAFEMAY EXTRA In-Store Savings Guide** Available at your Safeway store.