

Summer Scholars Achieve Win

Area high school students return from Boise, Idaho with a first place award.



See Metro, inside.

Join In Celebrating Our

25th ANNIVERSARY

Treking In Portland

Portland to welcome Star Trek, the Next Generation star Brent Spiner at weekend convention.



See Entertainment, Page B3.

The Portland

Mrs. Frances Schoen-Newspaper R University of Oregon Libr Eugene, Oregon 97403

ier 25¢

THE WEEK IN REVIEW

Blazers Pass On Corporate Name

The Portland Trail Blazers have decided not to add a corporate name to its new Rose Garden Arena...

Reno Puts Blame On Koresh

Attorney General Janet Reno was the last to testify at the Waco hearings last week, telling a congressional committee that blame for the deaths of more than 80 members of the Branch Davidians rested solely with their leader, David Koresh.

NRA Membership Plunges

The National Rifle Association lost more than 10 percent of its members this year, roughly 300,000 people.

Democrats Report Record Support

The Democratic National Committee reports it has set a record in fundraising, with \$20 million in contributions during the first half of the year...

Packwood Hearings Closed

Republicans on the Senate ethics committee voted last week not to hold public hearings into the misconduct allegations against Sen. Bob Packwood...

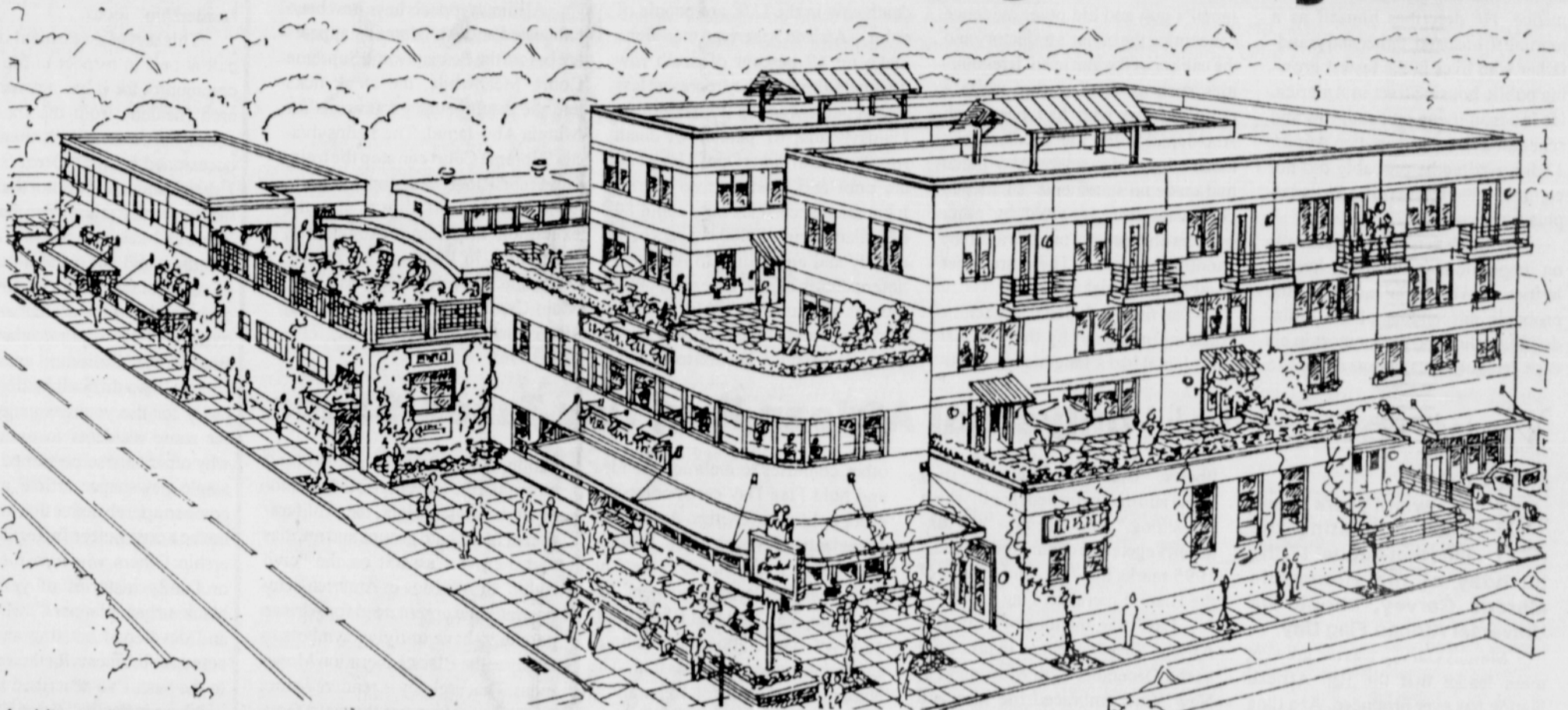
Bomb Called 'A Terrible Thing'

The use of atomic weapons on Hiroshima and Nagasaki was a terrible thing to do, says Aaron Novick, a retired professor at the University of Oregon.

Portland Leads In Recycling

Portlanders are recycling nearly twice as much refuse, by weight, as their counterparts across the nation.

The 'Standard Dairy' Project



Architectural sketch of the proposed 'Standard Dairy Project'. A view from NE Martin Luther King, Jr. Boulevard looking northeast. A mixed use project, including housing, restaurants, shops, and loft space.

Developer Bill Reed of WCR Co. has announced ambitious plans for the redevelopment of the Standard Dairy site on Northeast Martin Luther King Jr. Blvd. between Stanton and Graham.

The new 'Standard Dairy,' scheduled for completion in 1996, will include an innovative mix of shops, restaurants, offices, lofts and apartments.

The Standard Dairy was built more than 60 years ago and for many years provided home milk delivery throughout north and northeast Portland.

The focal point of the Standard Dairy will be a new pedestrian plaza on the corner of Graham St., which will provide a place for outdoor dining on King Blvd. and street-level entries for new shops and restaurants.

housing ranging from affordable studio apartments accessible by elevator, up to large, two-story 'rooftop townhouses' that will have commanding views of the downtown skyline.

13 lofts in the project will provide residents with an opportunity to live and work in the same units.

The Standard Dairy site is one of the largest sites on MLK under single ownership, making it one of the first and easiest to be redeveloped.

The project includes a total of 67 units of

Continued to page A7

Rider Advocates Call 911 To Save A Life

Two area residents, employed as rider advocates on Tri Met buses, are being honored for their role in saving the life of a northeast Portland woman.

Robert Coleman of the Woodlawn neighborhood and David Young of the Piedmont neighborhood were presented Humanitarian Awards last week from the Northeast Coalition of Neighborhoods.

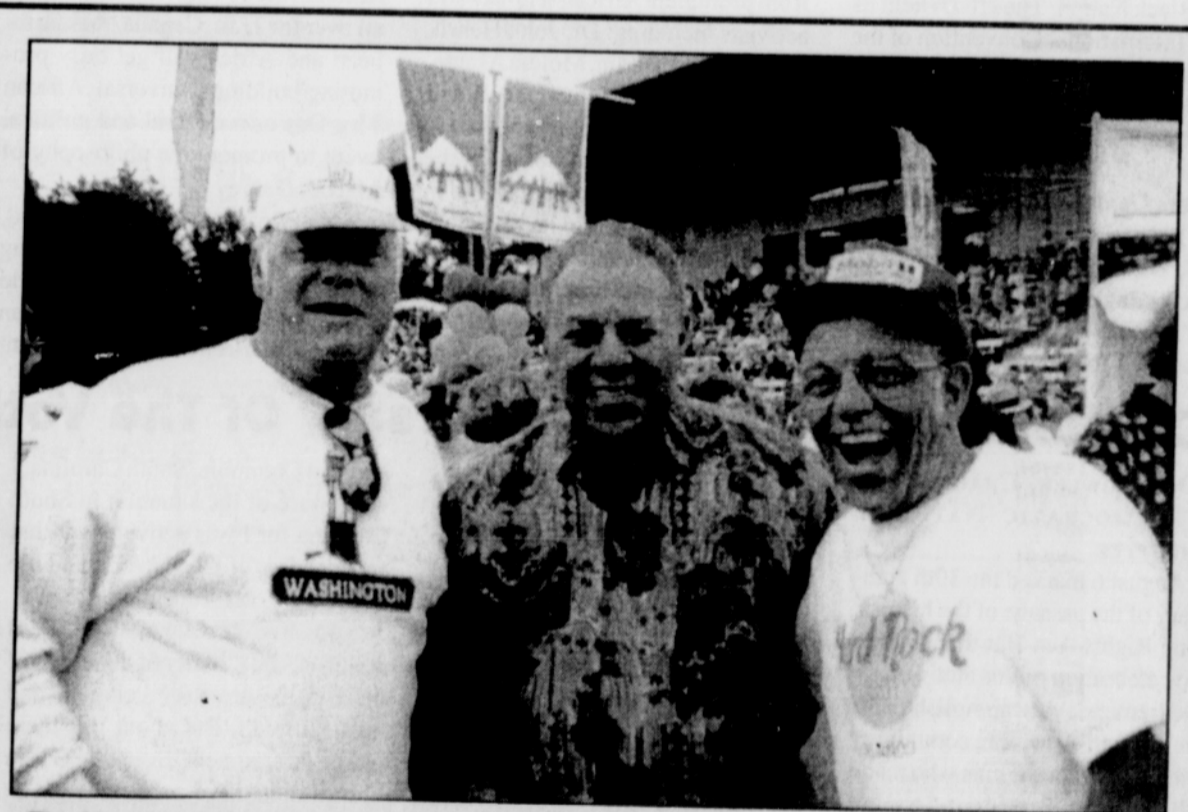
Coleman and Young were on a Tri-Met bus along the downtown Portland Transit Mall when they observed a group of people gathered around Patricia Ann Wells in a bus shelter.

Using their radio communication devices, they contacted Tri-Met dispatchers who summoned medical assistance via 911.

'We commend Robert and David for their quick thinking and rapid response that helped save a life,' said Ben Priestley, executive director of the Northeast Coalition of Neighborhoods.

Rider Advocates, who live in 13 coalition neighborhoods of north and northeast Portland, offer personalized customer service and address safety concerns for Tri-Met passengers.

The advocates were created last year after a series of violent episodes on area buses.



The Mount Hood Festival of Jazz celebrated by a host of endearing fans, including Dr. Walter Reynolds (center), and his friends Nick and Tom (to his left and right).

Women Wage Assault On Alcohol Abuse

Drug and alcohol abuse by women continue to be the single-most damaging contributor to the economic, family, medical and spiritual ill-health of Portland's African-American community, according to Carol Bridges of the Imani Women's Support Project.

Bridges, the chair of the Imani board, announced Monday a re-direction of the group's role to drug prevention among low-income women.

Bridges said Imani has previously worked to 'address critical needs of women in recovery,' but has suffered recent budget reductions and staff changes.

Imani, which means 'faith' in Swahili, was founded in 1990 to provide culturally-relevant and community-based support and services to women and their children in inner north and northeast Portland.

Earlier this year, Shafia Monroe,

resigned as executive director of Imani, but she continues to pursue grants for the organization, Bridges said.

'We are all sorry to see Shafia step down,' Bridges said. 'She almost single-handedly grew this organization.'

Bridges said the board decided to focus its resources on substance abuse, after conducting a comprehensive assessment and self examination this summer.

With support from the Black Untied

Fund and several community leaders, Imani hired a management consultant and is conducting strategic planning with current and former board members and other group representatives.

'Our direction, strategy and tactics will be in place by early September,' Bridges said.

Area residents interested in participating with the planning effort are asked to contact the Imani Women's Support Project, Inc. at 284-3965.

EDITORIAL

METRO

SPORTS

ENTERTAINMENT

HOUSING

RELIGION

CLASSIFIEDS

A2

B1

B2

B3

B4

B5

B6