

# AUTOMOTIVE



## THE NEW 1995 MONTERO LS

A new, more powerful engine highlights the dynamic 1995 Montero LS. Producing 177 horsepower (hp) at 5,500 rpm and 188 ft. lbs. of torque at 4,500 rpm, the 3.0-liter, single overhead-cam (SOHC), 24-valve V6 powerplant is coupled to a rugged five-speed manual transmission (models with California emission standards achieve 168 hp at 5,500 rpm and 183 ft. lbs. of torque at 4,500 rpm). Montero LS also includes: 15-inch alloy wheels; full-time Active Trac 4WD system; four-wheel disc brakes; independent front suspension providing for outstanding comfort, traction and articulation over the most challenging surfaces; mounted spare tire (at rear of vehicle) with alloy wheel; and driver's-side air bag as standard equipment. Major options include: four-wheel anti-lock braking system (ABS); a smooth-shifting, four-speed automatic transmission; a six-disc compact disc (CD) autochanger, or single-disc CD player; trailer hitch; power sunroof; and cargo storage kit (net, mat and cover).

### What's In A Tune-up? More Than You'd Think

(CCC) - New car commercials feature 100,000 mile intervals between recommended tune-ups. Most cars would be in pretty bad shape if their owners waited that long.

When the owner of a typical car goes into the shop for a "complete tune-up," a service generally required every 30,000 miles or every two or three years, what services should be included? Electric ignition, computerized engine controls and electronic fuel injection have eliminated many of the adjustments that once were part of a traditional tune-up.

One of the main reasons people take their vehicles into their technician for a tune-up is because they are experiencing a "driveability" problem: starting, stalling, hesitation on acceleration, poor gas mileage or lack of power. These symptoms in today's complex engines require a comprehensive diagnostic check, including an exhaust emissions check (now mandatory in many areas).

### Time Is Precious In Emergency Braking

(CCC) - How long is one second? It's about as long as it took to read that question. It's the amount of time it takes to cover an 88 foot stretch of highway at 60 miles an hour. Now imagine traveling at that speed and encountering a situation that calls for immediate braking. After spending a full second thinking about it, you'd need another two seconds to get your foot to the pedal. Depending on the type and condition of the vehicle, you might need several hundred feet to come to a stop.

This is why safety experts stress the importance of a driver's quick reaction and his vehicle's ability to respond. A low brake pedal or lost motion in the mechanical components of the braking system costs precious time.

These questions from the Car Care Council can help you determine if your car may need a check-up. (Scoring on page 3.)

- The wheels were removed and my brakes were checked and/or serviced during the past year.  
 yes  no  maybe
- My car comes to a smooth, straight stop when the brakes are applied.  
 yes  no  maybe
- If I hold foot pressure on my brake pedal it tends to "fade" to the floor.  
 yes  no  maybe
- I hear a squealing sound when I apply the brakes but haven't had it checked because the car stops OK.  
 yes  no  maybe

Following are 17 items usually included in a complete tune-up. The list may vary according to vehicle and/or the shop providing the service, but it's a handy reference for owners seeking quality service.

1. Replace spark plugs
2. Check the distributor cap and replace it if necessary
3. Check ignition timing and adjust if necessary
4. Check ignition wires and replace if necessary
5. Check ignition performance (firing voltage/ignition patterns)
6. Check engine idle speed and adjust if necessary
7. Check the choke mechanism (on engines with carburetors)
8. Clean fuel injectors\*
9. Check compression and/or power balance (to identify bad injectors as well as compression problems)
10. Check manifold intake vacuum to reveal exhaust restrictions
11. Check battery and charging voltage

#### SCORING

	Yes	No	Maybe
1.	5 points	2 points	3 points
2.	5	2	3
3.	0	5	3
4.	1	5	3
5.	0	5	3

If you scored less than 25 points, your car may be due for a checkup. When it comes to brakes there's no room for "maybe."

The symptoms described by the Car Care Council in questions 3, 4 and 5 share one thing in common: they're danger signals of which every motorist should be aware. Further, the Council reminds owners that there's more to brake system service than replacing worn brake shoes and pads; mechanical components need inspection and replacement as well.

And, as indicated in question 5, the hydraulic system cannot be ignored. When your brake fluid is low, find out why. It could mean a serious leak. The Council also recommends checking brake fluid regularly. The reservoir should remain full and the fluid should be clear amber in color. If it looks dirty, have the system flushed and new fluid installed. This procedure is part of a complete brake system overhaul.

For more information on

12. Check exhaust emissions, to verify fuel mixture, ignition performance and emission controls performance
13. Check the vehicle computer for presence of any trouble codes
14. Install a new air filter
15. Replace the fuel filter(s)
16. Replace the PCV (positive crankcase ventilation) valve
17. Check all emissions control components

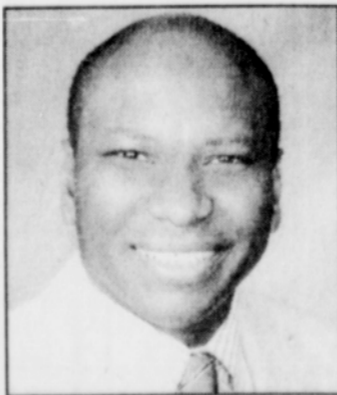
For an informative pamphlet listing the eight most common signs your car needs a tune-up, send a stamped, self-addressed envelope to Car Care Council, Department T, One Grande Lake Drive, Port Clinton, OH 43452.

\* Some shops may charge extra for this service.

Advertise in  
**The Portland Observer**  
call (503) 288-0033

### Gas Mileage

(CCC) - Do you keep a regular check on your car's gas mileage? Car Care Council says it's a simple matter of having a note pad in the glove box... and jotting down odometer reading and fuel consumed from fill-up to fill-up. A noticeable increase in fuel consumption may mean you need a tune-up or other maintenance.



Ask For Clarence Larkins

## "DETAILING:" IDEAL FATHER'S DAY GIFT

Racking your brain for that perfect Father's Day gift? How about getting dear, old dad's care professionally "Detailed"? Car Care Council suggests this major bumper-to-bumper sprucing up might make his heart swell with appreciation.

What services should you expect from a detailer? The term "detailing" means just what it says: to give special attention to every little detail. Going far beyond the usual wash and wax job, it means everything from shampooing carpets and upholstery to shining all the bright metal, inside and out. You may even find a top-notch detailer using a cotton swab to clean around the tape deck and instruments.

Detailing always includes the trunk and often under the hood... even under the car, if it's being done for dealer resale.

Karen Duncan, of the Professional Detailing Association, suggests that first-time customers ask what is to be included in the job.

What about the dusty air vents; will the trunk get cleaned; what about the rear window shelf; is the instrument panel included; etc?

"That's just good customer sense," says Duncan. "It keeps everybody's expectations the same and helps ensure customer satisfaction."

Duncan also suggests that car owners clean their cars on a regular basis. "Even if you don't have it detailed every time, your car needs to be washed at least once a month and more often if possible."

Neglect allows small problems to turn into big problems. For example, bumpers aren't going to stay black if they're not regularly conditioned."

Detailing a car can be a great do-it-yourself Father's Day project if you can sneak it away from Dad long enough to do the job. There are hundreds of products on the market from tire or upholstery cleaners to protective products for interior and exterior application. Know what you want to

accomplish, then talk to the people at the auto parts/supply store. They can suggest the best supplies for your job.

Keeping a car in "detail shape" has financial advantages that might not be apparent until trade-in time. Many car owners insist that having their care detailed before purchasing a new one has a positive effect on the trade-in price. Car Care Council's President, Don Midgley agrees.

"Upgrading a vehicle's appearance greatly enhances its value," he says. "When it's time to trade, a clean, well-maintained car may be worth up to twice as much as an identical one that's been neglected."

For additional information on this subject write for the Council's free brochure, "How To Keep Your Car Looking Young." Send a self-addressed, stamped envelope to Car Care Council, Department N, One Grande Lake Drive, Port Clinton, Ohio 43452.

### Cold Car Care Quiz

(CCC) - Spring may be just around the corner, but the worst of our cold weather still lies ahead. In the spirit of the midwinter season, Car Care Council poses five multiple choice quiz questions about cold weather use and maintenance.

1. For maximum freeze protection your antifreeze mixture should be (a) half antifreeze and half water. (b) pure antifreeze. (c) 70% antifreeze and 30% water.
2. On a cold, damp morning your engine is hard to start. One remedy that usually works is (a) pouring gas line antifreeze into the tank. (b) drying off the spark plug wires. (c) replacing the PCV valve.

3. Your car heater doesn't keep you warm. Possible reasons are (a) the cooling system thermostat is allowing the engine to run too cool. (b) the air flow damper controls are allowing cold air to mix with the heated air. (c) the coolant valve from the engine to the heater is not opening all the way.
4. On icy or snow covered roads it is wise to (a) let about 10-15 pounds of air pressure out of the tires and drive at normal speeds. (b) reduce driving speed but maintain correct tire pressure. (c) lower pressure by no more than 10 pounds and reduce speed.

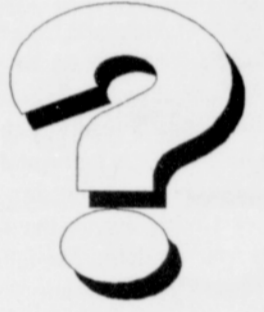
4. (b) is correct. For best traction, you need maximum "footprint," or treat contact with the road. This is achieved with proper inflation. Reducing speed on ice or snow is essential to safe driving. It is easy to become overconfident, suddenly discovering that stopping on a slick surface is difficult, if not impossible.
5. (b) is correct. The battery loses half of its power at 0°F. Unfortunately, the colder the weather the thicker the oil, making it even more difficult for the starter to crank

the engine.

If you'd like to tackle a few more car care questions, send for the Council's free QUIZ SHEET. Mail a stamped, self-addressed envelope to Car Care Council, Department Q, One Grande Lake Drive, Port Clinton, OH 43452.

5. A battery loses power as temperature drops. At 0°F, it produces only (a) 80% of its original power. (b) 50% of its original power. (c) 40% of its original power.

Answers are on page A3.



### NA'IM'S

Hair Connection  
Full Service Salon

4603 N. Williams Ave  
Portland, OR 97217  
(503) 288-3171



## GEORGES AUTO

HAS MOVED

FROM:

MARTIN LUTHER KING JR. BLVD.

TO:

7636 N. NEWALL AVE.

(503) 283-8624

PREVIOUSLY CALLED  
GEORGE AUTO CARE

IS NOW CALLED  
PRESIDENTIAL AUTO

CHECK IT OUT.

## WESTON

PONTIAC-BUICK-GMC

**BUICK BONANZA SALE**  
5 Days Only, March 22-29

- ★ Best In Class Service
- ★ Lower Prices!
- ★ Always High Trade Allowance!

655-2166 • 22555 SE Stark • 255-3840

### New 1995 Buick LeSabre Cust

3.8L V6, power seat, keyless entry, remote trunk & mirrors, cruise, tilt, pwr windows & locks, pwr load cassette & pwr antenna, custom alum wheels, ABS brakes, dual air bags & much more! (BS45, BS46, BS57, BS59, BS113 & BS162).

6 to choose from!  
\$20,499

### New 1995 Buick Park Ave

3.8L V6, auto, program door locks, keyless entry, dual power leather seats, dual comfortemp air conditioning, rear seat comfortemp, air conditioning, theft deterrent sys, concept sound cassette sys, tach & gauges, elec trunk, pull down, twilight sentinel HD lamps, ABS brakes, dual air bags & so much more! (BS55, BS103 & BS114)

3 to choose from!  
\$26,799