

HOUSING The Portland Observer

Fair Housing Enforcement Process To Be Showcased In April

April is National Fair Housing Month. To draw attention to some of the housing discrimination problems in our region, several typical cases are available for members of the media to examine and feature if desired. One story a week for the month would provide several instances of discrimination on the basis of race, ethnicity, family status, or sexual orientation.

Such a series could also provide information on the regions' enforce-

ment efforts including a special pilot project in Portland which has worked on over 200 housing discrimination complaints in the last year. This project shows that fair housing violation complaints occur most frequently about racial issues and about families with children.

Relatedly, the Eleventh Annual Oregon Fair Housing Conference will be held in Portland on April 28th. Featured topics include: occupancy issues, senior and special needs hous-

ing, zoning and citing regulations, litigation, and the Community Reinvestment Act.

Participation of property managers, housing advocates, consumers, real estate licensees, lenders, and government employees is anticipated.

Fair housing is a key issue in the diversity and liveability of our community. If there is an interest in producing a feature or short series on fair housing, contact Terry Anderson, 823-3035.

City's Kafoury Calls For Housing Investment

Portland City Commissioner Gretchen Miller Kafoury is proposing a major new commitment to new housing construction in Portland neighborhoods over the next 20 years.

Kafoury said the proposal responds to a critical shortage of affordable housing for working families, as well as the need to accommodate expected growth.

"We know how to produce housing and we know that we need to do it to strengthen all our neighborhoods. What we don't have is the funding to do what we know we need to do," Kafoury said. "We can't depend on the federal government or the private sector. This effort will take a commitment from the local community to meet this local need."

Kafoury said her plan would require \$15 million dollars in each of the next 20 years to spur housing and related investments throughout the city.

How To Enhance A Garden



Give any Gazebo a touch of Victorian elegance with solid oak or poplar balustrades, rails, fret brackets or spandrels. You can even custom design your own Gazebo with a complete line of Victorian millwork, available directly from Cumberland Woodcraft Company, Inc. All gingerbread Gazebo accessories represent 19th Century originals.

The company offers a full color catalog containing hundreds of Victorian gingerbread products to enhance home exteriors and interiors. Included is the Gazebo shown above in 10', 12' and 16' diameters plus optional trim selections.

The complete catalog may be obtained by sending \$5.00 to: Cumberland Woodcraft Company, Inc., Post Office Drawer 609, Carlisle, PA 17013.



The two zones of electrically charged particles that surround the earth high above its surface are named the Van Allen belts after American physicist James A. Van Allen who discovered them in 1958.

Easy-On/Easy-Off Window Tint Is Reusable Sunblock For Homes



Easy static-cling Jiffy Shade™ window tint allows people to tint their windows without mess or fuss. Made for glass or plexiglass windows. Blocks glare and fade, improves comfort indoors.

Anyone who has ever watched TV or read a newspaper in the morning or afternoon knows how irritating sun glare can be. No one likes to squint. Because too much sunlight can be a real headache, homeowners often resort to closing their drapes or pulling their blinds to shut the sun out.

Outside, people can wear sunglasses to block the glare and ultraviolet rays that hurt their eyes. But now there is a product that they can apply just as easily to the windows of their homes to stop glare, reduce fading, and more. It's called Jiffy Shade™ removable-reusable static-cling window tint.

No special tools or adhesives are needed. Static-cling Jiffy Shades are a snap to apply to glass or plastic windows. And because they are reusable, Jiffy Shades are perfect for apartments, offices, skylights, campers, RVs, and boats. Wherever a little instant sunblock is needed. And the tint blocks heat gain to improve interior comfort, for people with seasonal insulation needs.

Jiffy Shades are distributed by GILA Sunshine and sold at major home center stores in self-storage cartons. Standard gray and bronze tints are available to fit patio doors or smaller windows. For a free Jiffy Shade booklet, call 1 800 528 4481.

Consumers House Hunt Via Internet

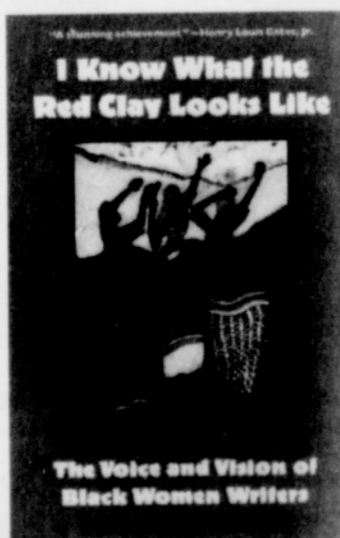
If you're looking for a home anywhere in the Pacific Northwest, now you can find it through Windermere Real Estate and the Internet, no matter where you are on the globe.

Windermere, the Northwest's largest residential real estate company, is the first real estate firm in the region to offer an on-line database of properties for sale to the public via

the Internet, the worldwide computer network dubbed the "information superhighway."

Property classifications include condominiums, new construction, premier properties, saltwater communities, single family homes, vacation and waterfront properties.

New title at Powell's



In *I Know What the Red Clay Looks Like* (Crown), writer and editor Rebecca Carroll skillfully interviews fifteen black women writers about race, gender, and their craft. Each interview is accompanied by an excerpt from the author's work. With eloquence and candor, these women, tell their stories: Davida Aedejouna, Tina McElroy Ansa, Lorene Cary, Pearl Cleage, J. California Cooper, Rita Dove, Gloria Wade-Gayles, Nikki Giovanni, Marita Golden, June Jordan, Gloria Naylor, Barbara Neely, Gwendoyne M. Parker, Charlotte Watson Sherman, and Barbara Summers

POWELL'S CITY OF BOOKS
1005 W Burnside • 228-4651 • TDD 226-2475

Mirrored Doors Reflect Your Home's Beauty

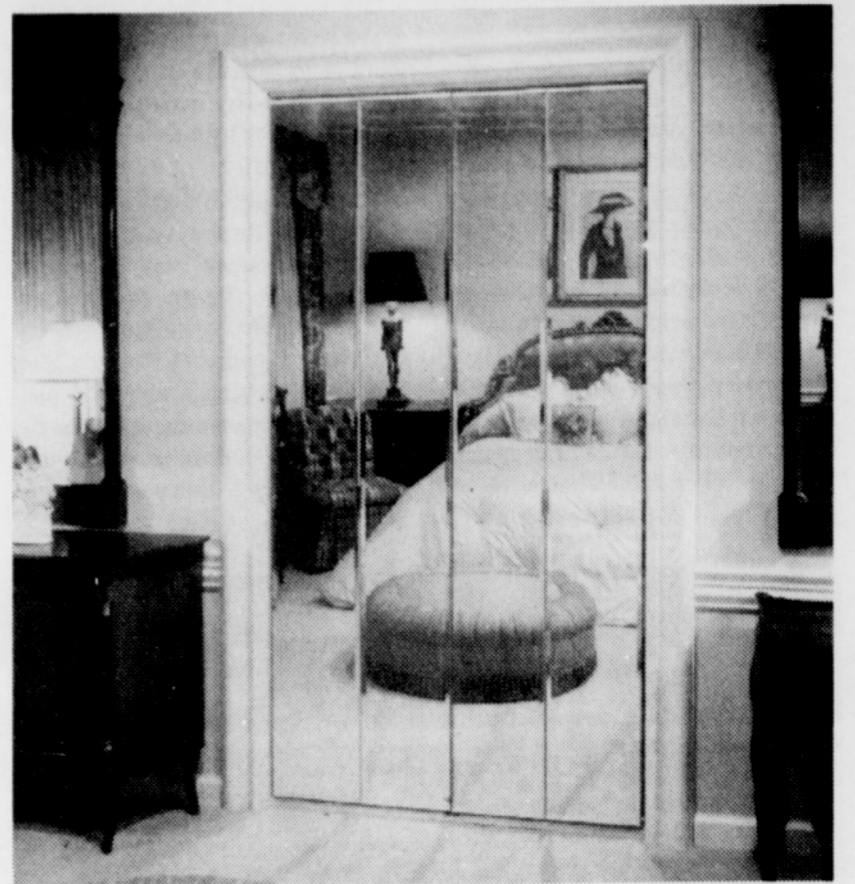
In almost every room in the home there's a closet or wardrobe that can be enhanced with a mirrored door. A mirrored door not only reflects the beauty of your home but allows you a full length view of your attire.

The Mirrored Doors Division of Century Shower Door, Inc., West Paterson, NJ, offers a complete line of upscale mirrored doors featuring quality engineered-construction that guarantees easy installation and years of quiet, friction-free operation.

Options include framed sliding mirror doors, frameless BiFold doors, frameless sliding doors and more. The company's new full-color brochure also shows the wide color choices, in frame colors that can coordinate well with walls and furnishings. Some of the color choices are satin silver, satin gold, bright gold, colonial white, bright silver and champagne gold. You can also choose among a wide range of glass options, including bronze or gray mirror, beveled or polished pencil edge.

Century frameless BiFold Mirror doors combine the beauty of uninterrupted beveled or flush mirrors with the function of smooth, virtually invisible hardware. They feature rugged cold-rolled steel and extruded aluminum construction. They're available in non-standard sizes.

Custom sizes are available. Century's outstanding craftsmanship turns your home into a showplace. For additional information, and free full-color literature, contact Mirrored



Century's Frameless BiFold Mirror Doors can enhance closets and wardrobes in almost any room of the house. They are available in champagne gold and white finishes.

Doors Division, Century Shower Door, Inc., 1265 McBride Avenue, West Paterson, NJ 07424. Phone 201 785 1414.

Ways To Keep Cool At A Minimum Cost

- Pull drapes and shades over windows facing the sun.
- Keep windows and doors closed when the air conditioning is on.
- Use a thermostat control to automatically increase or decrease home temperature for daytime/nighttime differences to save money.
- Set thermostat control at highest comfortable level - each degree raised reduces energy consumption by 3 to 4 percent.
- Check the air filter every 30 days during heavy cooling.
- Check the fan belt for wear in systems manufactured before 1980.
- With a new system, consider a service contract which includes periodic maintenance and repairs for a specified period.

For more information about the basic rules to follow for keeping cool this summer, send for ARI's free pamphlet "How To Keep Your Cool And Save Cold Cash." Send a stamped self-addressed business-size envelope to: ARI, Dept 94-12, 4301 North Fairfax Drive, Suite 425, Arlington, Virginia 22203. No phone orders are accepted!



LICENSED IN OREGON SINCE 1975
Singles & Seniors, I can help you!
"1st Class Guarantee"

A-ZEBRA

RMLS Realty Inc.

300 NE Multnomah, Suite #27
Portland, Oregon 97232
(503) 230-1390 • (Res.) 287-6837

George A. Hendrix
MBA, GRI, Broker

Fabric Depot

THE LARGEST, MOST COMPLETE RETAIL FABRIC STORE IN THE WEST
MARCH 21 THROUGH APRIL 4, 1995

25% OFF EVERYTHING

40% OFF

- All Outerwear Fleece
- All Fake Fur
- All 100% Polyester Printed Silkies
45" & 60" Widths - Imported & Domestic
- All 100% Rayon Prints
45" & 60" Widths

BE SURE TO CHECK OUR STORE FOR "MANAGER'S SPECIALS"

*Discounts do not apply to special purchase or previously discounted or marked down items 3/21 thru 4/4/95. Prices good March 21 through April 4, 1995.



RETAIL HOURS:
MON-FRI 9:00am-9:00pm
SAT-RDY 9:00am-7pm
SUN 10:00am-7pm
WHOLESALE HOURS:
MON-FRI 9:00am-5pm
SAT-RDY 9:00am-5pm
SUN 11:00am-4pm

RETAIL - WHOLESALE
Plenty of FREE PARKING
CARS • BUSES • RVs
700 S.E. 122nd Ave.
Portland, OR
252-9530

J.L.S
Lawn
Service

office: 503-335-0263
pager: 503-940-7721

Estimates

Dad's Oil Service

Speedy Service
Friendly Call
For Quote

MasterCard VISA

heating oils
Best Cash Prices
104 NE Russett
Portland, OR 97212
282-5111