

# AUTOMOTIVE

## OUT OF CAR EXPERIENCES

Beginning March 8, Clark County employees will be striving to have as many out of car experiences as possible. It's all part of a county effort to promote alternative forms of transportation such as taking the bus, bicycling and walking. Carpooling also will be urged as Clark County joins in with other state agencies and local businesses to be Oil Smart.

Clark County's Out of Car Experience Month is its way of participating in the statewide Oil Smart campaign whose goal is to reduce

dependence on fossil fuels.

On March 8, county employees are urged to use alternative forms of transportation on Lose Your Car Day. Clark County Commissioner John Magnano will be commuting to work by using the Salmon Creek Park and Ride and taking C-Tran.

On March 15, the county will sponsor What's My Bus Line Day. A C-Tran representative will be at the downtown campus to help employees figure out the best bus route to use getting to and from work.

On March 22, it's Hey, Hey, You Can Share My Ride Day. Employees are encouraged to carpool and attend a brown bag lunch at St. Paul's Lutheran Church at 13th and Franklin Streets to hear about C-Tran's ridematching program that matches up carpool buddies.

And on March 29, the conclusion of Out of Car Experience Month will feature free donated pizza for employees who found sound commute alternatives at least two times during the month.

## REPLACE WIPERS IN GOOD WEATHER

Nighttime driving in unfamiliar territory is difficult when you're tired. Add a little rain plus a smearing, noisy windshield wiper and you have a potentially dangerous finale to a long day on the road.

To prevent this scenario, plan to quit driving before dark, suggests the Car Care Council, and be sure your lights and windshield wipers are OK.

Windshield wipers are among the most popular replacement items on a car. To be sure you select the right type and size for your particular

vehicle, shop for wiper blades in good weather. You'll see various aerodynamic features, single, double and triple blade designs and some with rubber boots to prevent freezing. Some brands offer a selection of colors.

The best time to learn how to install wiper blades is while you are in the store. There you can compare instructions on the packages and, if necessary, ask questions. Take the old blade in with you, as sizes range from 15 to 22 inches and blade as-

sembly connectors vary from brand to brand, vehicle to vehicle. When choosing a blade that must be adapted to your vehicle, be sure the package includes necessary fittings.

If the wiper blade holder still is serviceable, you may want to buy blade refills only. But the frame and the arm that holds the squeegee should be replaced periodically for best wiping performance. The squeegee itself, being subjected to the elements, should be replaced every 6 to 12 months.

## COUNCIL URGES ANNUAL BRAKE "PHYSICAL"

When a child on a bike darts out in front of a moving car, he's taking a big chance. If the driver of the car isn't sure about the condition of his brakes, he's taking an even bigger chance.

Brake inspections are one of life's little details that car owners should tend to without fail, says the Car Care Council. It should tend to without fail, says the Car Care Council. It should be taken care of at least annually, like getting a physical, because your vehicle is, indeed, and extension of your body.

With most braking systems having over 150 different parts, not to mention the advent of computerized anti-lock systems, more of us will leave this job to the well-equipped pros. If faced with the "good, better, best" option, consider that there's no room for anything less than the best in brake work. Insist on quality parts from a reputable source.

When having any type of work done on a vehicle, it helps to know the lingo. Brake inspections are no different.

Among the points included in a close inspection: 1) pads and shoes for lining wear; 2) all wheel cylinders; 3) calipers, drums and rotors; 4) all hardware; 5) brake lines and

hoses for leaks, kinks or blockage; 6) brake fluid level.

(note: For close scrutiny, items 1 through 4 should include the removal of all four wheels.)

The Council states that the hydraulic system should be flushed and replaced as part of a brake system overhaul.

Occasionally, brake problems will occur even though the system has been thoroughly inspected and maintained. The good news is that these problems rarely pop up without warning, but once such symptoms surface, they rarely go away by themselves.

### Warning signs include:

**Pull:** car pulls to one side when brakes are applied;

**Drag:** brakes fail to release completely;

**Excessive Noise:** brakes squeal or chatter;

**Low Pedal:** pedal height seems different than normal;

**Pulsating Brakes:** jerky sensation as the car comes to a stop;

**Grab:** brakes grab with the least pressure;

**Hard Pedal:** brakes require excessive pedal pressure.

An annual brake inspection is a good habit to acquire, says the Council, so make it a point to set an inspec-

tion date that's easy to remember. Sometime during National Car Care Month (October) is one suggestion from the Council. Or, because a safe car benefits the entire family, consider having the inspection done as a family gift. Unsafe brakes wreck more than just cars... they wreck lives.

Want to know more about brakes? The Council offers a free pamphlet, "How To Keep Your Brakes From Letting You Down." Send a stamped, self-addressed envelope to Car Care Council, Department B, One Grande Lake Drive, Port Clinton, Ohio 43452.

## MITSUBISHI MOTOR SALES OF AMERICA, INC.



The stunning design of the 1995 3000GT VR-4 reflects the ultimate in luxury sports car sophistication. An advanced 3.0-liter, 24-valve double overhead-cam (DOHC) twin-turbocharged, twin-intercooled V6 engine provides 320 horsepower at 6,000 rpm, while four-wheel disc brakes with anti-lock brake system (ABS) provide precision braking. New-for-'95 features include 245/40ZR-18 tires mounted on 18-inch chrome-plated alloy wheels, revised suspension tuning and a newly designed optional power sunroof. Other standard features include: a six-speed Getrag manual transmission; all wheel drive; four wheel steering; Active Aero; leather seating surfaces; electronically controlled suspension; driver- and passenger-side air bags; air conditioning with environmentally friendly non-chlorofluorocarbon (R134a) refrigerant; and Mitsubishi/Infinity audio system. Options include a six-disc compact disc (CD) player and manual or power sunroof.



**Preventive Car Care Can Save Lives**  
Car Care Council

(CCC) - Accidents directly attributable to neglected vehicle maintenance (worn brakes and tires, poor vision, loose steering, etc.) could be costing the American public billions of dollars annually. This statement, from the Car Care Council, is based on a National Highway Traffic Safety Administration estimate of \$137.5

billion annual cost of vehicle accidents. Subtracting a third of which are D.U.I. related driver impairment, this still leaves an accident tab totaling more than \$90 billion.

Five to fifteen percent of this cost might be averted through periodic inspection and maintenance of vehicles, according to industry estimates. Even the more conservative figure, which would place a \$4.5 billion price tag on mechanically related accidents,

stresses the need for greater concern for safety maintenance.

Beyond the economics, concludes the Council's statement, is the impact of personal injury, loss of life and property. Consider that for every American lost during the 42 days of Operation Desert Storm several more died on our nation's highways because of accidents due to a vehicle failure. Both types of losses are both tragic and unacceptable, and certainly the latter is preventable.

Advertise In  
The  
Portland  
Observer  
Call 503-288-0033

**GEORGES AUTO**  
**HAS MOVED**  
FROM:  
MARTIN LUTHER KING JR. BLVD.  
TO:  
7636 N. NEWALL AVE.  
(503) 283-8624  
PREVIOUSLY CALLED  
GEORGE AUTO CARE  
IS NOW CALLED  
PRESIDENTIAL AUTO  
**CHECK IT OUT.**

## BYE'S BODY SHOP

Body Work - Painting  
And Fender Repair

25 YEARS  
OF ESTABLISHED BUSINESS

10% off Senior Citizens

OWNER: TOM BYE

6430 NE Martin Luther King Blvd.  
Portland, OR 97212

(503) 284-8775

## Don't Stretch Your Luck With The Timing Belt

Car Care Council

(CCC) - One of the most perfectly coordinated devices to modern man is the automobile engine. Its valves and pistons work in concert with the spark plugs and the fuel injectors, thousands of times per mile, with microsecond accuracy. An integral part of this phenomenon is a flat rubber belt with notches that engage teeth on the camshaft pulleys. When this timing belt breaks or even slips, the coordinated opening and closing of the valves is, to say the least, interrupted. So is your trip.

The timing belt is lighter and quieter than the conventional timing gears or chain, and it requires no lubrication.

But, reminds the Car

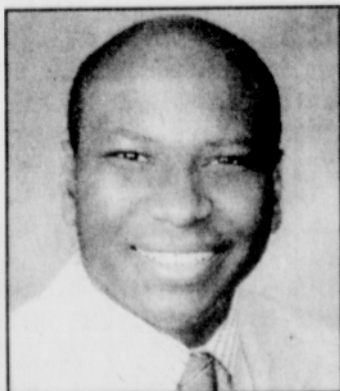
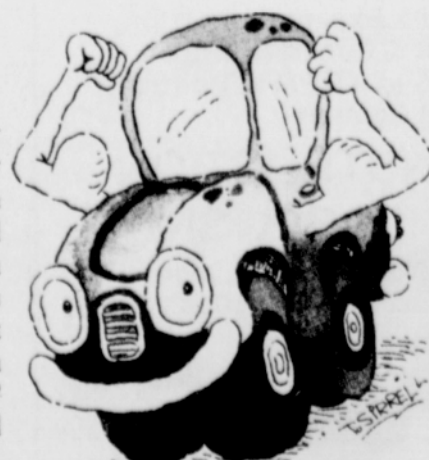
Care Council, being susceptible to wear, the belt should be checked and adjusted (or replaced) periodically. Check your owner's manual for your vehicle's specific service recommendations, which may vary from model to model.

Unlike a windshield wiper, battery or spark plug, which give some warning before total failure, a timing belt usually fails without notice, often disabling the vehicle on the spot. In some cases the result is severe engine damage.

Unfortunately, concludes the Council, there is no way, other than inspection, to know whether or not your timing belt is "running out of time."

## Look After Your Car

(CCC) - Some psychologists say our automobiles are extensions of our personalities... that when you see a car that's obviously well-kept and running like a fine timepiece, you can expect that the driver probably wants to present his best to the world. But what impression do you get when you see a dented, rusted, smoking clunker? Thumbs down! Car Care Council urges motorists to look after their cars.



Ask For Clarence Larkins

## WESTON

PONTIAC-BUICK-GMC

**BUICK BONANZA SALE**  
5 Days Only, March 15-19

- ★ Best In Class Service
- ★ Lower Prices!
- ★ Always High Trade
- ★ Allowance!

655-2166 • 22555 SE Stark • 255-3840

**New 1995 Buick LeSabre Cust**  
3.8L V6, power seat, Keyless entry, remote trunk & mirrors, cruise, tilt, pwr windows & locks, pwr load cassette & pwr antenna, custom alum wheels, ABS brakes, dual air bags & much more! (BS45, BS46, BS57, BS59, BS113 & BS162).  
**6 to choose from!**  
**\$20,499**

**New 1995 Buick Park Ave**  
3.8L V6, auto, program door locks, keyless entry, dual power leather seats, dual comfortemp air conditioning, rear seat comfortemp, air conditioning, theft deterrent sys, concept sound cassette sys, tach & gauges, elec trunk, pull down, twilight sentinel HD lamps, ABS brakes, dual air bags & so much more! (BS55, BS103 & BS114).  
**3 to choose from!**  
**\$26,799**